

S+ Operations Information Management



S+ Operations integrated information management transforms data into meaningful information and presents it in intuitive user-specific desktop displays for real-time business decisions.

Overview

Easy access to real-time data from multiple sources is essential for all operational and business decisions. The timely collection and distribution of real-time data is a challenge for many information management systems. However, the real hurdle is taking data aggregated from a myriad of different sources and transforming it into meaningful, actionable information. S+ Operations' integrated information management displays the right information in a seamless and quick manner.

All consumers of information, including operators, engineers, maintenance supervisors, managers and executives have unique requirements and viewing preferences for their information. S+ Operations' integrated information management provides support at every organizational level to enable users to make timely decisions.

Integrating information from all sources

S+ Operations is based on ABB's vast experience in power generation and is designed to integrate information from anywhere in the enterprise on cross-site and cross-plant information platforms. ABB's advanced technology provides seamless integration from third-party devices, controllers and systems. What's more, S+ Operations is able to incorporate historical data to provide users with a valuable perspective of the trends affecting their operations and businesses.

Historical data on demand

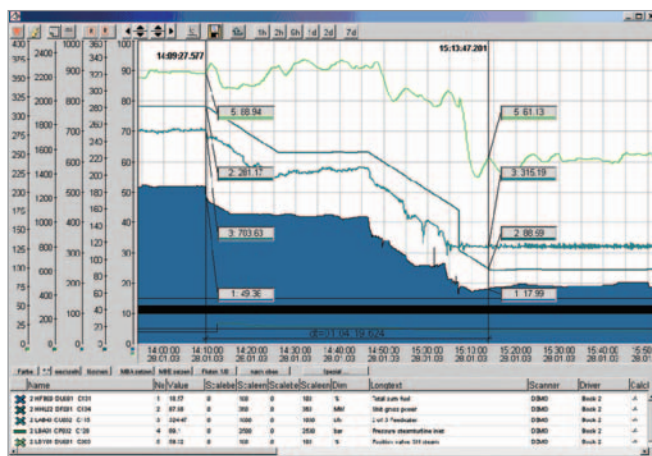
S+ Operations provides the possibility to view real-time data and historical information simultaneously in one display. Additionally, data can be accessed from multiple history servers, aggregating analog as well as digital trend data. The practical advantages are obvious when looking at trend curve values: users are able to overlay information over time without having to move from a real-time system to a separate historian.

Transforming data into meaningful information

S+ Operations has powerful information management capabilities that takes aggregated data from multiple sources and enables users to view it in formats that make sense for them. Management is able to track key performance indicators (KPI) with or without historical trending. Operators can seamlessly view both real-time and historical trend data as well as alarms and events in a format that enables them to respond quickly and appropriately. Maintenance supervisors can follow equipment performance trends and align predictive maintenance with personnel.

In order to enable each user to work as efficiently as possible, S+ Operations provides maximum flexibility and easy utilization.

S+ Operations' integrated information management gives operations and plant management extraordinary clarity as well as leading edge data resolution and calculation speed. This supports well-founded, real-time business decision making that leads to process efficiency, business profitability and a competitive edge.



Historical data

Sophisticated reporting

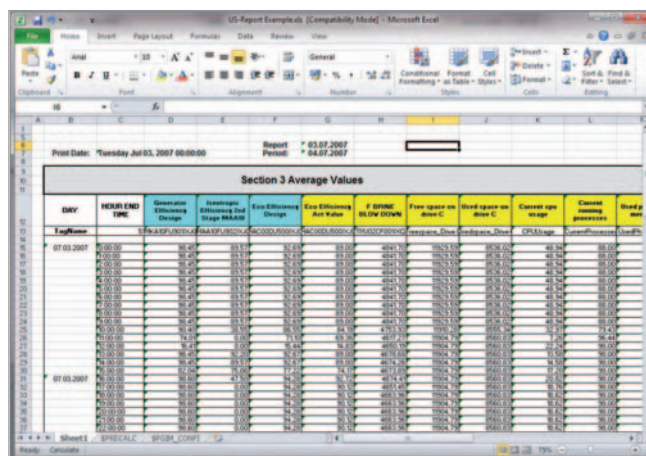
Sophisticated reporting functions draw on all current and historical process information retrievable from S+ Operations and other sources of information (eg. from other information systems). Reports are easily configurable to the specific needs of a user, including freely customized reports.

Superior data management

S+ Operations provides the ability to collect and securely store business and process data from all plant sources with unique resolution. The patented database technology incorporates event-driven data collection with aggregate cache, thus combining multiple, otherwise conflictive, characteristics. S+ Operations delivers millisecond resolution for the whole history database, with a low storage footprint, speed and unrivaled flexibility.

Key features and benefits

- Completely integrated and preconfigured. The information management works “out of the box” with no additional engineering and maintenance required
- The integrated and preconfigured long-term historian provides detailed statistics and reports for every desired time frame and resolution without additional configuration or engineering
- History data from all plant sources is seamlessly integrated
- Event-based real-time data collection with milliseconds resolution. This allows very high resolution when events occur as well as low memory and storage demands
- The patented data aggregation technology allows for superior speed - eg. trend displays for any chosen time frame are usually generated in less than one second
- The event-based data collection allows for extraordinary flexibility - new statistics, reports and trend displays can be configured at any time for any time frame and for any purpose without additional engineering
- Unlimited history data collection - data from every time frame starting from the initial installation is directly accessible at any time
- The perfect integration into the operators' station allows seamless and quick access to all available data



Reports

- Direct and quick access of history information and real-time data
- Clearly arranged event history display with integrated trend data graphics
- The sophisticated presentation module makes the most complex graphics easy to read. Report configuration is easy with the drag and drop interface
- Data display via full clients and web clients
- OPC AE server and client enable easy data exchange with foreign systems
- Life cycle management service available

ABB Inc.

Power Generation

Wickliffe, Ohio, USA

Phone: +1 440 585 3087

E-Mail: powergeneration@us.abb.com

ABB AG

Power Generation

Mannheim, Germany

Phone: +49 621 381 3000

E-Mail: powergeneration@de.abb.com

ABB Pte. Ltd.

Power Generation

Singapore

Phone: +65 6776 5711

E-Mail: powergeneration@sg.abb.com

www.abb.com/powergeneration

©Copyright 2012 ABB

All rights reserved. Specifications subject to change without notice. Pictures, schematics and other graphics contained herein are published for illustration purposes only and do not represent product configurations or functionality. User documentations accompanying the product is the exclusive source for functionality. User documentation accompanying the product is the exclusive source for functionality descriptions.

Symphony is a registered or pending trademark of ABB S.p.A.

All rights to other trademarks reside with their respective owners.

Power and productivity
for a better world™

