



GEH2988

Neutral Kit

TNI66



Hazards of electrical shock or burn! Turn off power before working inside this equipment.

Used with:

600A Heavy and General Duty Switches

Description

This device (Cat. No. TNI66) is U/L listed for use as an insulated groundable neutral and may be installed in 600Amp Type TG or TH fusible safety switches. The complete kit consists of the following parts (see Fig. 1):

- a neutral block with #6-250MM mounted lug,
- two unmounted twin #4-600MCM Cu/Al lugs (one for line, one for load)
- mounting nuts and lock washers for above lugs
- bonding lug, screw and lock washer.

Installation

1. Consult switch rating label for proper location of neutral.
2. Remove two filler screws or round discs (if present) from tapped holes in enclosure back wall.
3. Using holes uncovered in Step 2, fasten neutral to switch back wall with mounting screws, lock washers and flat washers provided.
4. Install the #4-600MCM line and load lugs using nuts and lock washers provided (see Fig. 2).
5. If bonding is required, attach bonding lug to enclosure with screw and lock washer provided in covered bonding hole. Area around hole should be scraped clean for proper continuity to ground. Jumper wire (not provided) should be sized according to National Electric Code.

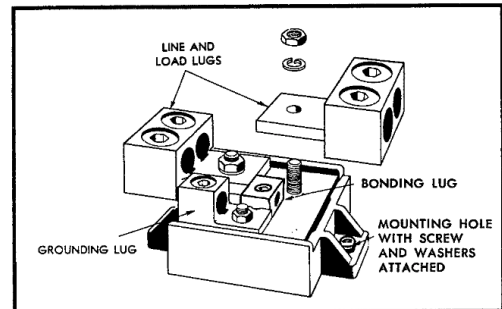


Fig. 1. TNI66 Neutral Kit

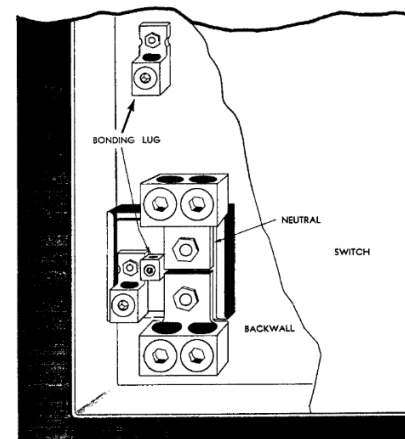


Fig. 2. Typical installation of TNI66 Neutral Kit