

Type PSH-993 Indoor/outdoor current transformer

Application

The PSH-993 indoor/outdoor, window-type current transformer is a 600 volt, 10 kV BIL rated unit. This unit can be applied over higher rated system voltages provided sufficient insulation is available on the point of application. Primary current ratios are available from 50:5 to 12000:5 at 60 Hertz, with a rating factor of up to 4.0. This unit is ideal for old electrical substation equipment with no internal space for bushing current transformers. This dry-type, solid-cast current transformer will operate with high accuracy for metering or relay applications.

Mechanical description

The core and coil assembly is wound and encapsulated in a molded cast resin with various window sizes from 5" up to 14". The secondary terminals are ¼"-20 copper studs with associated hardware. An optional removable terminal box with two (2) 1" NPT conduit hubs can be provided for outdoor use.

Accuracy performance

The PSH-993 can provide 0.3 class accuracy for metering with burdens of B-0.1 up to B-1.8, and up to C800 for some relay applications (see ratings specific to each ratio). Upon request, 0.15 class metering accuracy is available with burdens of B-0.1 up to B-1.8 (see ratings specific to each ratio). The transformer is accurate through its rating factor, and can be used continuously to this level.

Mounting

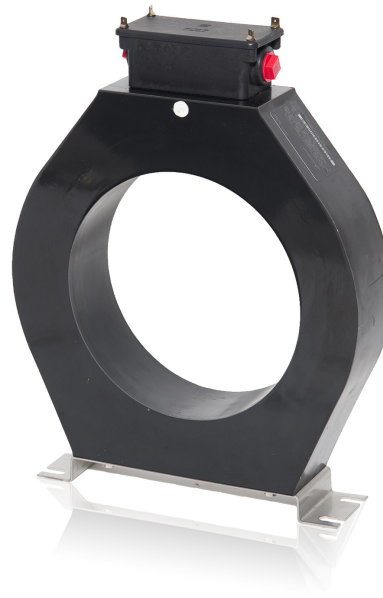
The PSH-993 is designed for mounting in the upright position only. Open end slots are provided on the aluminum base.

Testing

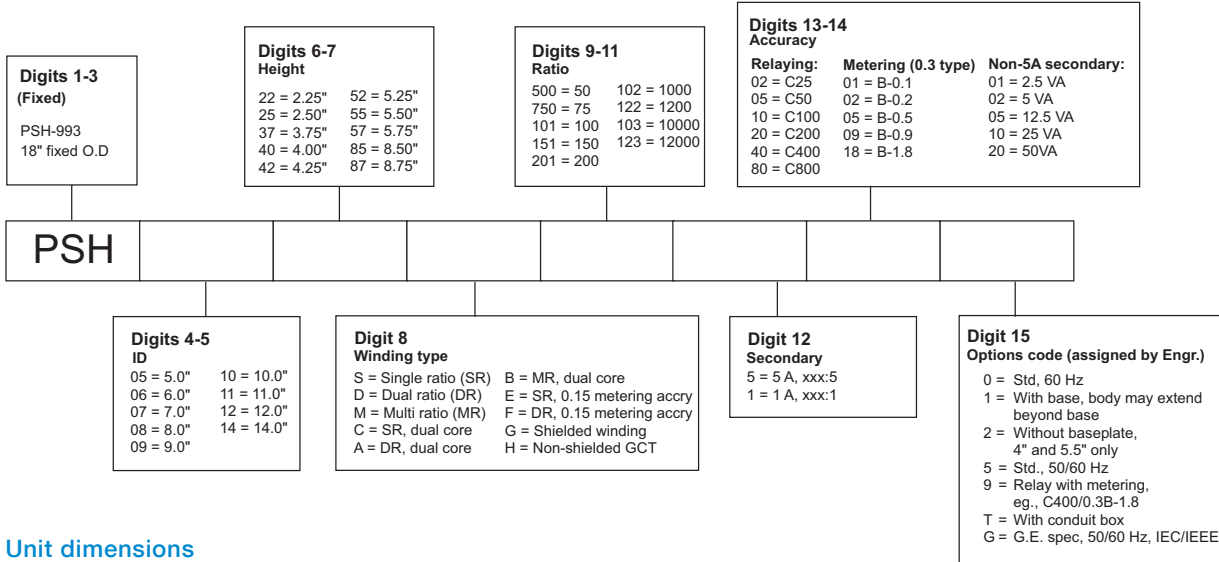
This unit can be tested to all applicable IEEE, CSA, or IEC standards as requested.

Options

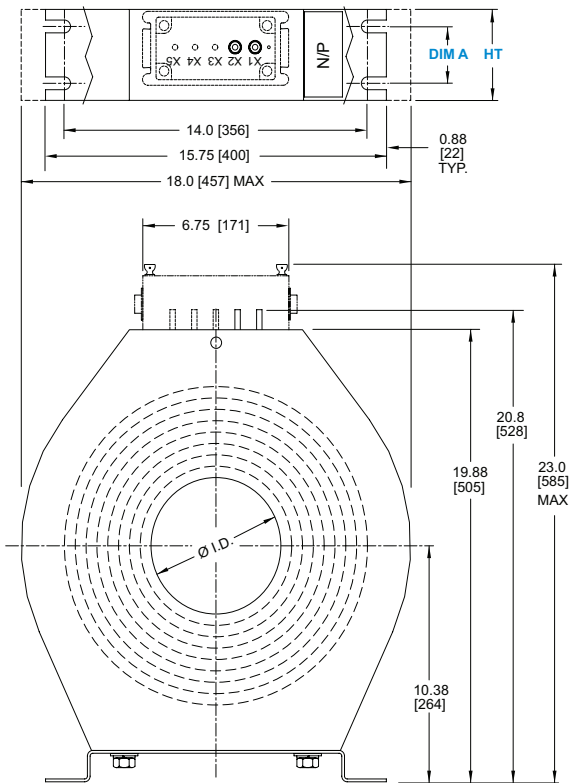
The PSH-993 is available with a secondary terminal box for outdoor use. The unit is offered in single, dual, or multiple core designs. Through careful calculation, steel selection, and testing, existing current transformer characteristics can be matched. Existing characteristic curves are required. Contact factory for other needs.



Selection guide

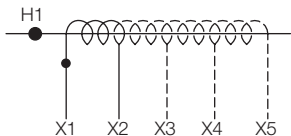


Unit dimensions

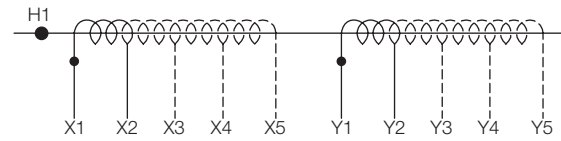


Note: metric dimensions are displayed in [mm].

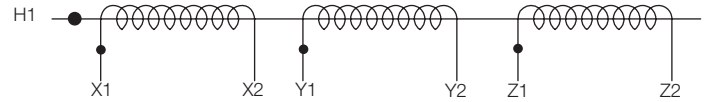
ID (in.) [mm]	HT (in.) [mm]	Dim A (in.) [mm]
5.0 to 14.0 [127 to 355]	4.0 [102] 5.5 [140]	2.5 [64] 4.0 [102]



Single core winding diagram



Dual core winding diagram



Three core winding diagram

For more information please contact:

ABB Inc.
Medium Voltage Distribution Components
 3022 NC 43 North
 Pinetops, NC 27864
 USA
 Phone: +1 252 827 3212
 Fax: +1 252 827 4286
www.abb.com/mediumvoltage

Note:

The information contained in this document is for general information purposes only. While ABB strives to keep the information up to date and correct, it makes no representations or warranties of any kind, express or implied, about the completeness, accuracy, reliability, suitability, or availability with respect to the information, products, services, or related graphics contained in the document for any purpose. Any reliance placed on such information is therefore strictly at your own risk. ABB reserves the right to discontinue any product or service at any time.

Copyright 2012 ABB.
 All rights reserved.

Power and productivity
 for a better world™

