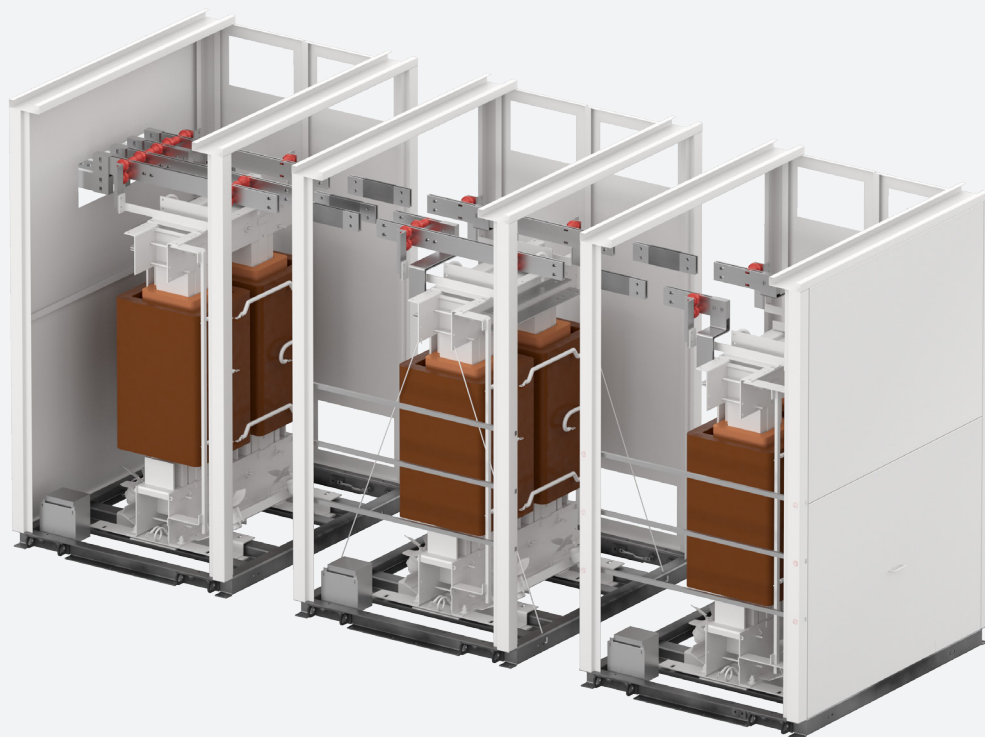


TRANSFORMERS

Tri-plex transformers

Single phase Dry-Type construction



Features and benefits

When customers are faced with limiting installation factors in regards to size, weight and space, ABB's optimized Tri-plex designs can provide a complete engineered and sectionalized solution.

ABB's Tri-plex transformers can support challenging installation requirements for new and retrofit applications. Tri-plex designs can help reduce and eliminate unnecessary costs, all while guaranteeing fitment.

In the building and construction process, the transformer is installed typically before finished walls and building completion, sometimes making it difficult to replace in the event of a failure.

With today's aging infrastructure, this becomes even more of a problem. Tri-plex designs can be a solution in solving those challenges.

What is Tri-plex ?

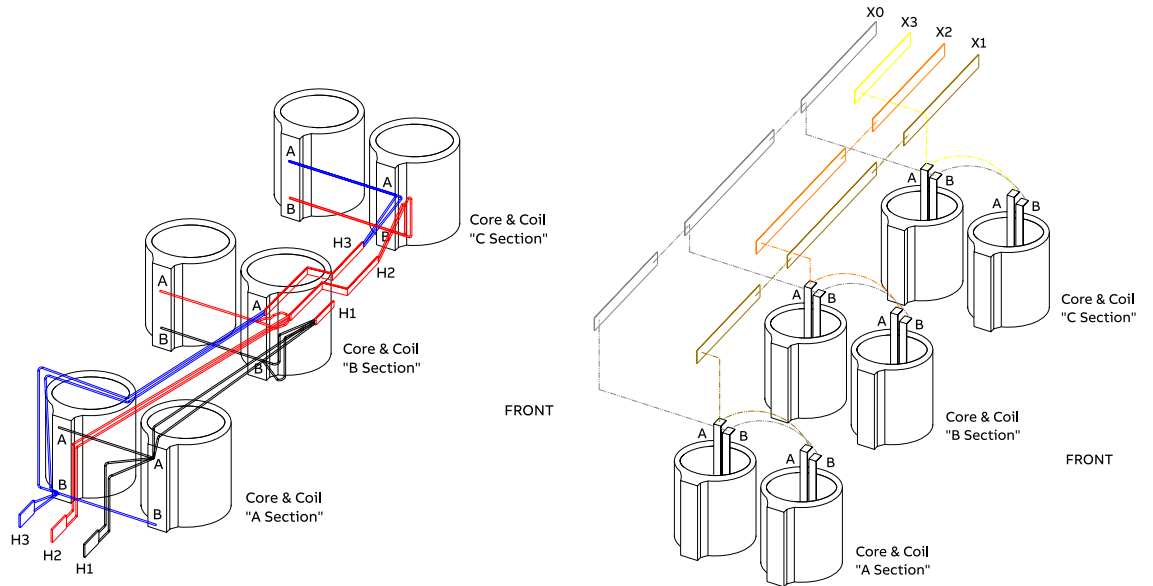
- Three Single Phase core and coils with common bushing. These three transformer modules are banked together to form a complete three phase transformer (Figure 1)
- Each single phase section consists of two coil sets and the coil sets are rotated to minimize space
- Each section is isolated from the other by GPO-3 isolation barriers and connected via interconnecting bus, allowing ease of installation

The typical phasing of a fully assembled Tri-plex transformer is depicted in figure 2. The three single phase sections are banked together to form one three phase transformer.

Figure 1: Banking of transformer modules to form a complete three phase transformer



Figure 2: Typical phasing of a fully assembled DYN1 Tri-plex transformer



Tri-plex's are engineered to meet stringent site requirements

Tri-plex transformers can assist when there are limiting factors for entry and exit, legacy electrical room layouts or other location constraints.

- Elevator constraints (size and weight)
- Narrow entryways , exits and hallways

- Restrictive doorways, hatches, and other obstructions
- Overhead restrictions and fixed piping
- Rigging limitations

Tri-plex benefits

Options	Available in all KVA sizes and coil technology construction types. Options for NEMA 1, 2 and 3R enclosures. Fan package options with independent monitoring systems.
Installation	Reduces installation costs on-site. Triplex designs reduce rigging requirements and various logistics involved for above ground level installs. Weight and size savings are critical. Casters can also be added to further facilitate movement.
Shipping	Ease of shipment. Disassembled prior to shipment and is delivered in three separate sections for ease of installation and close coupling in the field.
Repair and maintenance	Connected via flexible interconnecting links for ease of removal. Can be purchased with a spare module to assist with emergency situations. Downtime is improved with this option and reduces end user removal and repair time.
Testing	Built to DOE, ANSI, IEEE, UL and NEMA standards. All units are factory assembled and tested individually and three phase for guaranteed fitment and performance.

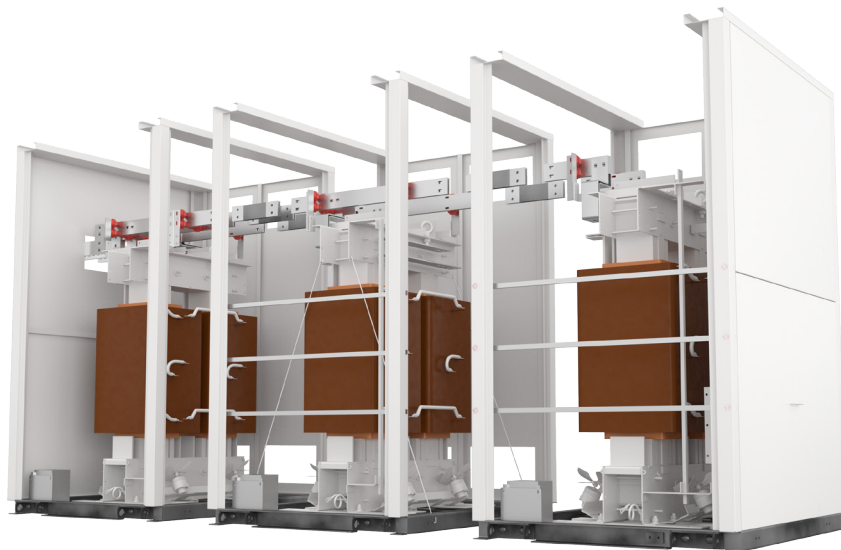




ABB Enterprise Software Inc.

171 Industry Drive

Bland, VA 24315

USA

Phone: +1 276 688 3325

Fax: +1 276 688 4588

abb.com/transformers

Disclaimer

ABB is a trademark of ABB. Manufactured by Hitachi Ltd under license from ABB Ltd.