

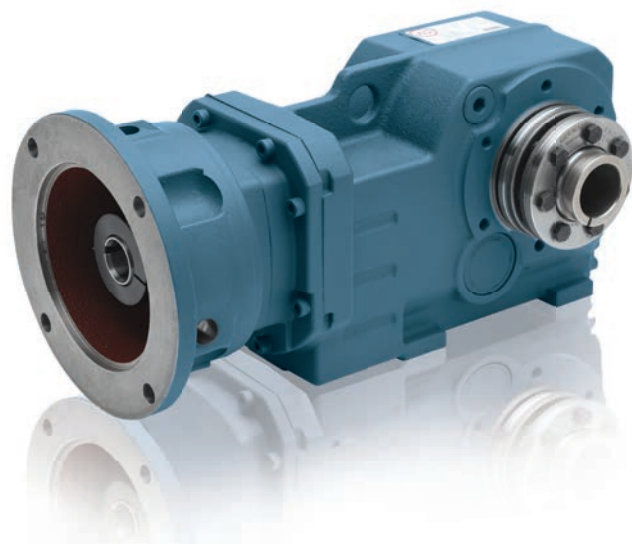
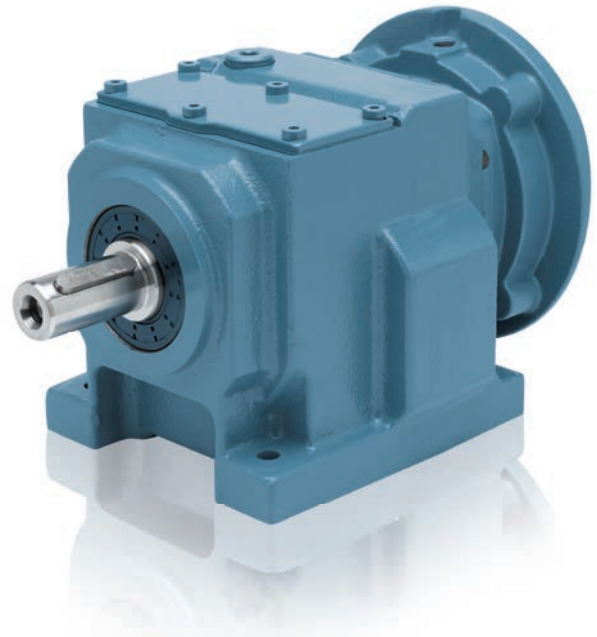
Dodge Quantis build center – Shanghai

The Dodge Quantis is a modular-designed gearing solution, engineered for flexibility and greater torque density in a compact housing. Ideal for a wide range of applications, customers throughout Asia can now quickly access this product from the new Quantis build center in Shanghai.

With a large inventory of preselected components, trained technicians can build gearboxes with an extensive variety of power ratings, ratios and shaft configurations.

Inline helical (ILH) specification

- Sizes 38, 48, 68, 88, 108
- Footed housing
- Solid metric output shaft
- IEC B5 clamp collar: 71-180
- MobilGear 600 XP lubricant
- Standard nitrile seals
- Standard mounting options
- Standard ABB blue paint



Right angle helical bevel (RHB) specification

- Sizes 38, 48, 68, 88, 108
- Footed housing - solid metric shaft (A side)
- Flanged housing - metric straight hollow bore
- Flanged housing - metric tapered hollow bore
- IEC B5 clamp collar: 71-180
- MobilGear 600 XP200 lubricant
- Standard nitrile seals
- Standard mounting options
- Standard ABB blue paint

Reducer accessories for RHB

- Twin-tapered bushings
- Torque-Arm options
- B5 output flange

Options for both reducer types

- XT harsh duty seals
- Viton seals
- Synthetic lubrication
- Food grade lubrication
- Motor assembly

Quantis in-line helical (ILH) ratings

Size	Housing style / output shaft	C-face clamp collar	Max input power (kW)	Max torque (Nm)	Ratio range
38	Footed/solid metric	IEC 71-100	4.45	220	4.77 - 191.75
48	Footed/solid metric	IEC 71-112	8.57	450	4.28 - 208.77
68	Footed/solid metric	IEC 71-132	16.46	800	3.49 - 281.01
88	Footed/solid metric	IEC 71-160	28.08	1680	4.87 - 300.41
108	Footed/solid metric	IEC 80-180	46.66	3100	7.71 - 325.21

Quantis right angle helical bevel (RHB) ratings

Size	Housing style / output shaft	C-face clamp collar	Max input power (kW)	Max torque (Nm)	Ratio range
38	Footed/solid metric	IEC 71-100	3.46	250	5.65-179.14
	Flanged/tapered hollow				
	Flanged/straight hollow				
48	Footed/solid metric	IEC 71-100	6.12	450	7.22-169.53
	Flanged/tapered hollow				
	Flanged/straight hollow				
68	Footed/solid metric	IEC 71-112	8.58	820	5.36-243.72
	Flanged/tapered hollow				
	Flanged/straight hollow				
88	Footed/solid metric	IEC 71-132	16.65	1650	5.54-302.68
	Flanged/tapered hollow				
	Flanged/straight hollow				
108	Footed/solid metric	IEC 80-160	28.04	3000	7.68-307.24
	Flanged/tapered hollow				
	Flanged/straight hollow				

IEC B5 flange motor assembly

Model number	kW rating	IEC frame (B5)
M2BAX71MB4	0.37	71M
M2BAX80MA4	0.55	80M
M2BAX80MB4	0.75	80M
M2BAX90SA4	1.1	90S
M2BAX90LA4	1.5	90L
M2BAX100LA4	2.2	100L
M2BAX100LB4	3	100L
M2BAX112MA4	4	112M
M2BAX132SA4	5.5	132S
M2BAX132SMA4	7.5	132M
M2BAX160MLA4	11	160M
M2BAX160MLB4	15	160L

For more information please contact:

www.abb.com/motors&generators

We reserve the right to make technical changes or modify the contents of this document without prior notice. With regard to purchase orders, the agreed particulars shall prevail. ABB Ltd does not accept any responsibility whatsoever for potential errors or possible lack of information in this document.

We reserve all rights in this document and in the subject matter and illustrations contained herein. Any reproduction, disclosure to third parties or utilization of its contents – in whole or in part – is forbidden without prior written consent of ABB Ltd.

Copyright © 2014 ABB

All rights reserved