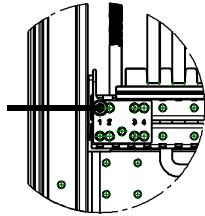
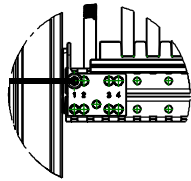


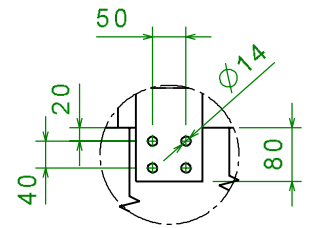
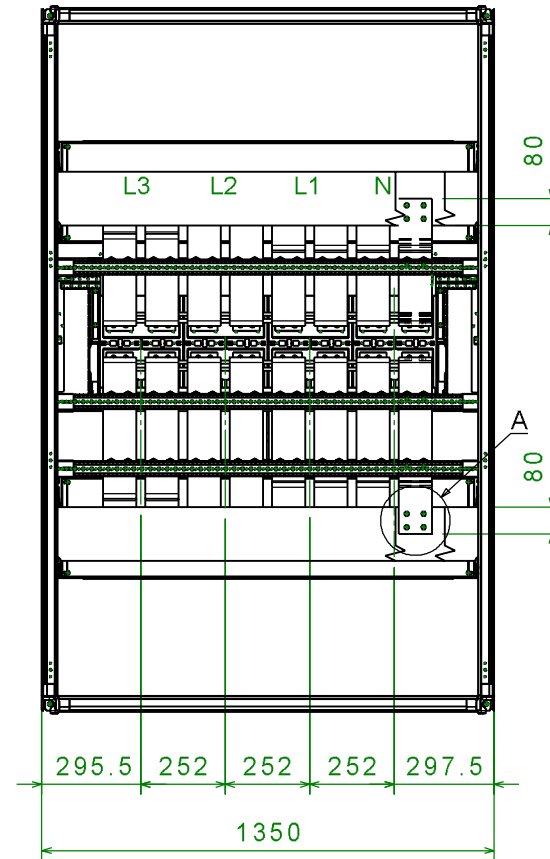
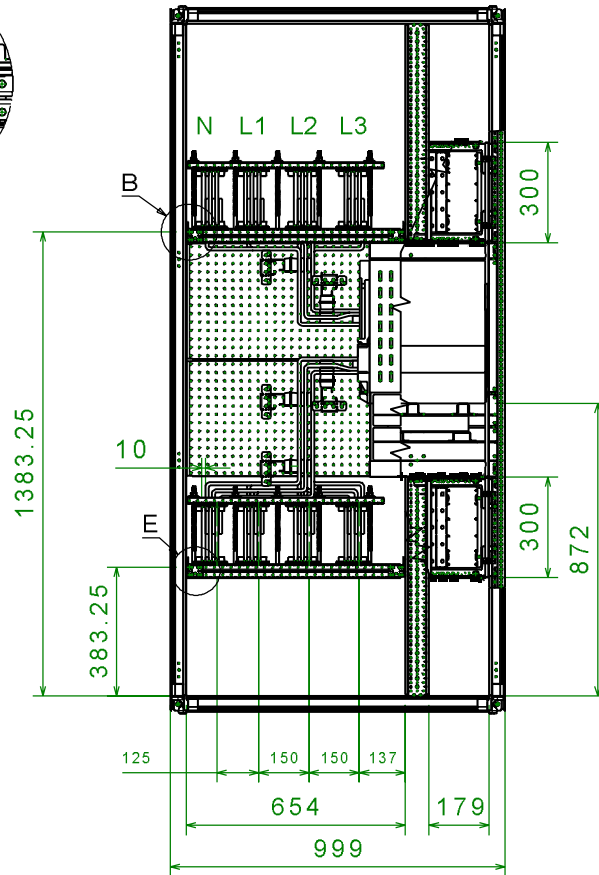
ASSEMBLY DRAWING E6.2 H/V 5000A W ALIM BUSBARS 3x160x10xP / 3x200x10xP



Detail B



Detail E



Detail A



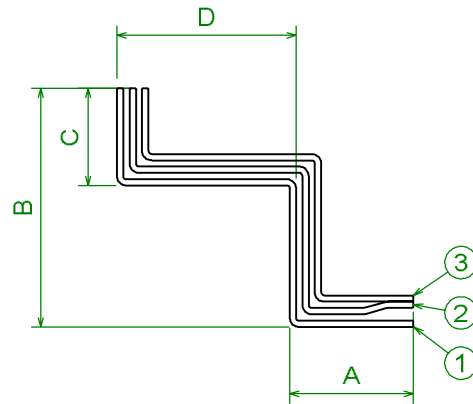
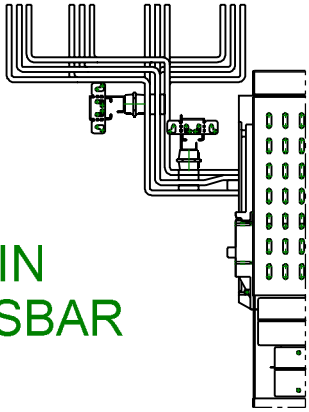
CONNECTION BUSBARS 5x100x10xP

XX		SCALA SCALE	:		
AGG. DISEGNO		DESIGNATORE DESIGNER	:	N° PROGETTO : PROJECT XXX.XX	
MODIFICA		APPROVAZIONE APPROVAL	:	ABB ABB SACE ADB	
DATA		DATA DATE	: XX-XX-XX	DENOMINAZIONE/NAME: E6.2 H/V 5000A W CONNECTION BUSBARS 5x100x10xP	
		Formato A3 Formed		DISEGNO N° /DRAWING N° 863861	

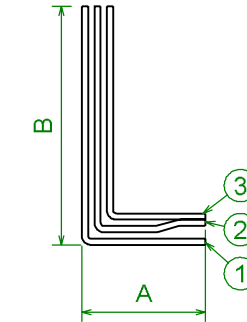
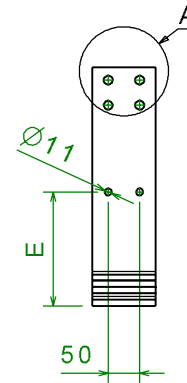
CONNECTIONS FOR E6.2 H/V 4P FS WITHDRAWABLE 5000A

SPEP P = 900mm
 BUSBARS HOLDER PBHB3121 (100mm)
 MAIN BUSBAR IP30 / IP31 : 5000A (3x160x10) ; 6300A (3x200x10)

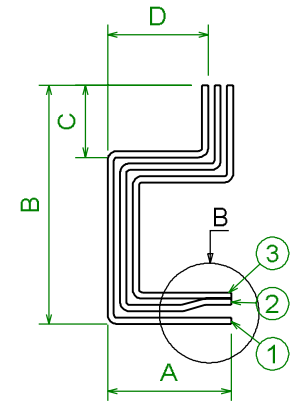
MAIN
BUSBAR
UP



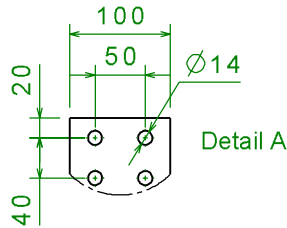
N-L1



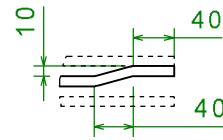
L2



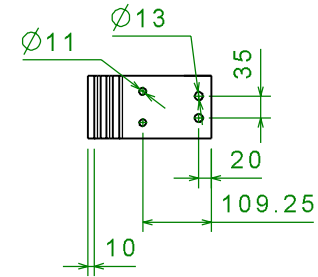
L3



Detail A



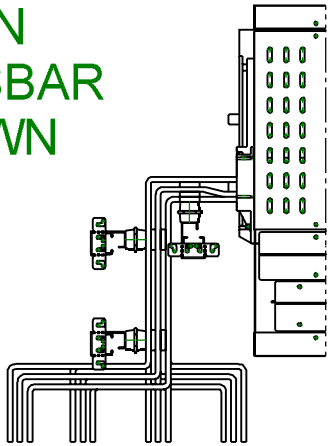
Detail B



PHASE	POS	QTY	A	B	C	D	E
L3	1 L3.1	2	196.5	379.25	114.25	160	181.25
	2 L3.2	2	176.5	359.25	134.25		161.25
	3 L3.3	1	156.5	339.25	154.25		141.25
L2	1 L2.1	2	196.5	379.25	-	-	181.25
	2 L2.2	2	176.5	359.25	-	-	161.25
	3 L2.3	1	156.5	339.25	-	-	141.25
L1	1 L1.1	2	196.5	379.25	154.25	160	181.25
	2 L1.2	2	176.5	359.25	134.25		161.25
	3 L1.3	1	156.5	339.25	114.25		141.25
N	1 N.1	2	196.5	379.25	154.25	285	181.25
	2 N.2	2	176.5	359.25	134.25		161.25
	3 N.3	1	156.5	339.25	114.25		141.25

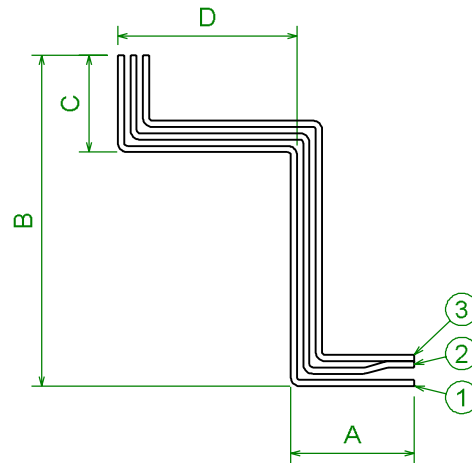
SCALE	:	
DESIGNATORE	:	
APPROVAZIONE	:	
DATA	:	XX-XX-XX
FORMATO	:	Formato A3 Formed
N° PROGETTO	:	XXX.XX
ABB	ABB SACE ADB	
DENOMINAZIONE/NAME	:	E6.2 H/V 5000A W CONNECTION BUSBARS 5x100x10xP
DISEGNO N° /DRAWING N°	:	8 6 3 8 6 0

MAIN BUSBAR DOWN

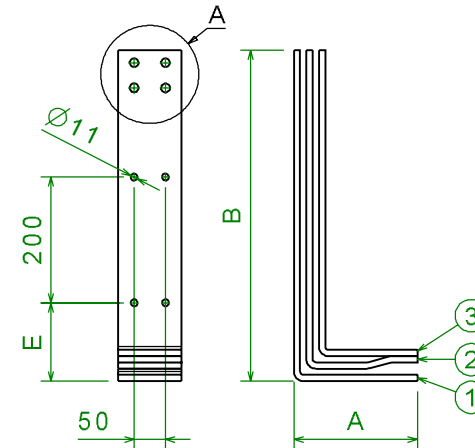


CONNECTIONS FOR E6.2 H/V 4P FS WITHDRAWABLE 5000A

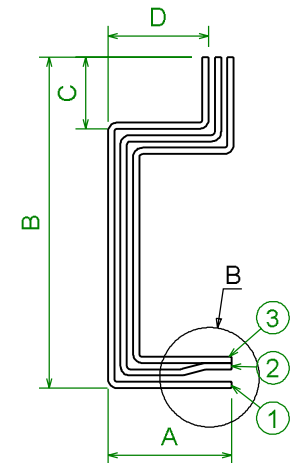
SPEP P = 900mm
 BUSBARS HOLDER PBHB3121 (100mm)
 MAIN BUSBAR IP30 / IP31 : 5000A (3x160x10) ; 6300A (3x200x10)



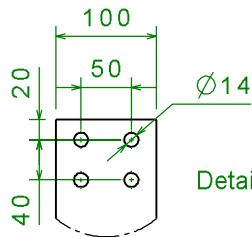
N-L1



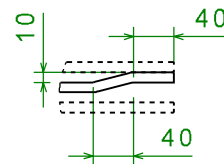
L2



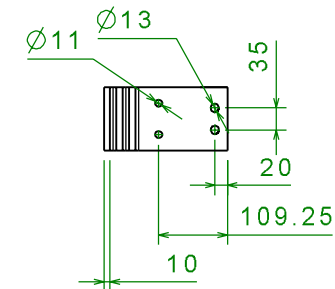
L3



Detail A



Detail B



PHASE	POS	QTY	A	B		C	D	E
				160	200			
L3	1 L3.1	2	196.5	526.75	486.75	114.25	160	124.75
	2 L3.2	2	176.5	506.75	466.75	134.25		104.75
	3 L3.3	1	156.5	486.75	446.75	154.25		84.75
L2	1 L2.1	2	196.5	526.75	486.75	-	160	124.75
	2 L2.2	2	176.5	506.75	466.75	-		104.75
	3 L2.3	1	156.5	486.75	446.75	-		84.75
L1	1 L1.1	2	196.5	526.75	486.75	154.25	160	124.75
	2 L1.2	2	176.5	506.75	466.75	134.25		104.75
	3 L1.3	1	156.5	486.75	446.75	114.25		84.75
N	1 N.1	2	196.5	526.75	486.75	154.25	285	124.75
	2 N.2	2	176.5	506.75	466.75	134.25		104.75
	3 N.3	1	156.5	486.75	446.75	114.25		84.75

SCALE	SCALA	
DESIGNER	DISEGNATORE	
APPROVAL	APPROVAZIONE	
DATE	DATA	XX-XX-XX
FORMAT	Formato	A3 Formed
PROJECT	N° PROGETTO / PROJECT	XXX.XX
ABB	ABB SACE ADB	
NAME	DENOMINAZIONE/NAME	E6.2 H/V 5000A W CONNECTION BUSBARS 5x100x10xP
DRAWING N°	DESIGNO N° /DRAWING N°	8 6 3 8 6 7