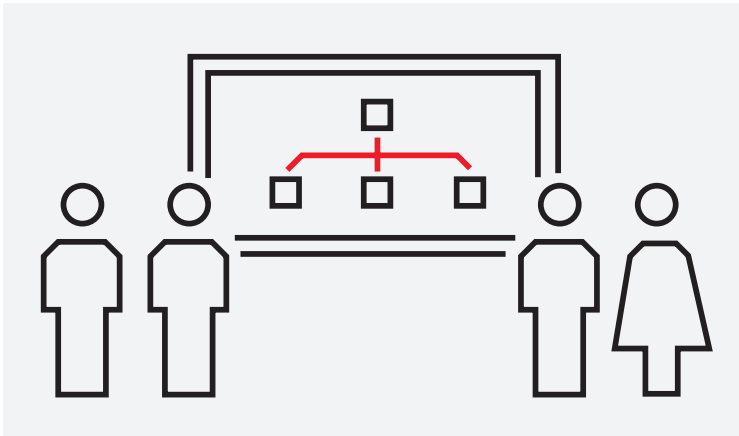


COURSE DESCRIPTION

S322

S+ Operations advanced configuration



The goal of this course is to learn how to design complex S+ Operations HMI (Human Machine Interface) architectures and configure advanced functions.

Learning objectives

Upon completion of this course, students will be able to:

- Design and configure S+ Operations complex architectures
- Customize the layout and menu of the operator workplace
- Configure third party connectivity
- Configure S+ Operations server redundancy
- Create graphic page with dynamic symbols
- Configure calculation tags
- Configure history data and reporting functions
- Configure the Symphony Plus History thin web client

Participant profile

This training is targeted at system and application engineers, commissioning and maintenance personnel, service engineers and system integrators.

Prerequisites

Trainees should have a general understanding of process automation and basic knowledge of control systems.

Successful completion of either S301H or S301M and S321 is required.

Topics

- S+ Operations HMI architecture
- Third party connectivity
- Server redundancy
- Data backup and restore
- Historian and reporting
- History alarm
- History trend
- History report
- History backup / recovery
- History data import / export
- Thin web client
- Advanced graphics
- Dynamic symbols

Course type and methods

This is an instructor led course with interactive classroom discussions and associated lab exercises. Approximately 50% of the course entails hands-on lab activities.

Duration

4 1/2 days

—

Agenda

Day 1	Day 2	Day 3	Day 4	Day 5
S+ Operations HMI architecture	Workplace layout configuration	History trend analysis	Graphic pages creation	History backup/recovery
S+ history software architecture	History database archives	History alarm analysis	Dynamic symbols creation	History export/import
S+ Operations Historian setup	History Navigator	Report configuration	Reports configuration	Data backup/restore
Web client configuration	History Signal Explorer	Hands-on lab: exercises	History graphic	Hands-on lab: exercises
	Hands-on lab: exercises		Hands-on lab: exercises	Questions and answers

—

ABB

Power Generation Training

Email: IT-powergeneration.training@abb.com

—

The information contained in this document is for general information purposes only. While ABB strives to keep the information up to date and correct, it makes no representations or warranties of any kind, express or implied, about the completeness, accuracy, reliability, suitability or availability with respect to the

information, products, services, or related graphics contained in the document for any purpose. Any reliance placed on such information is therefore strictly at your own risk. ABB reserves the right to discontinue any product or service at any time.
© Copyright 2017 ABB. All rights reserved.