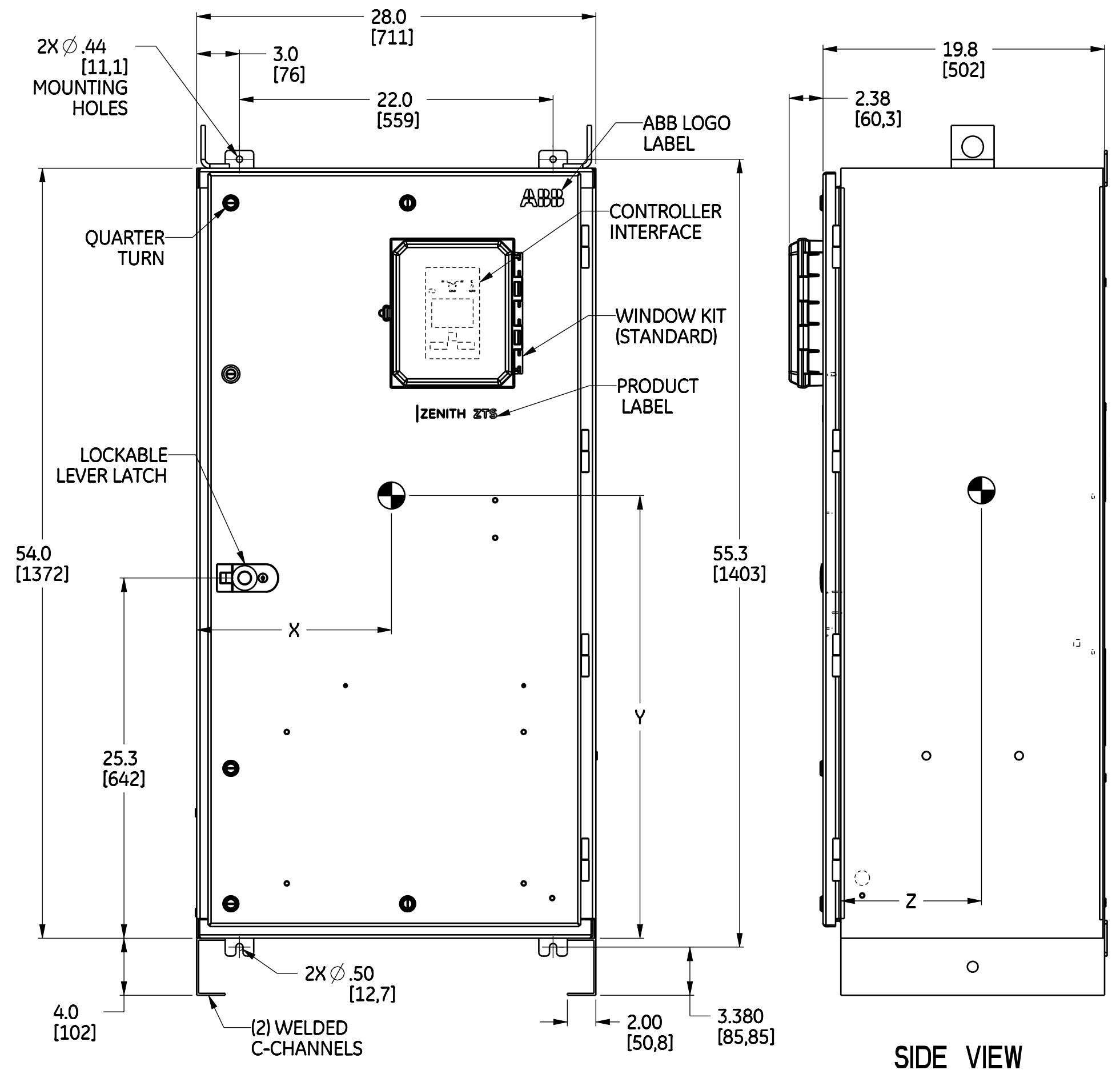


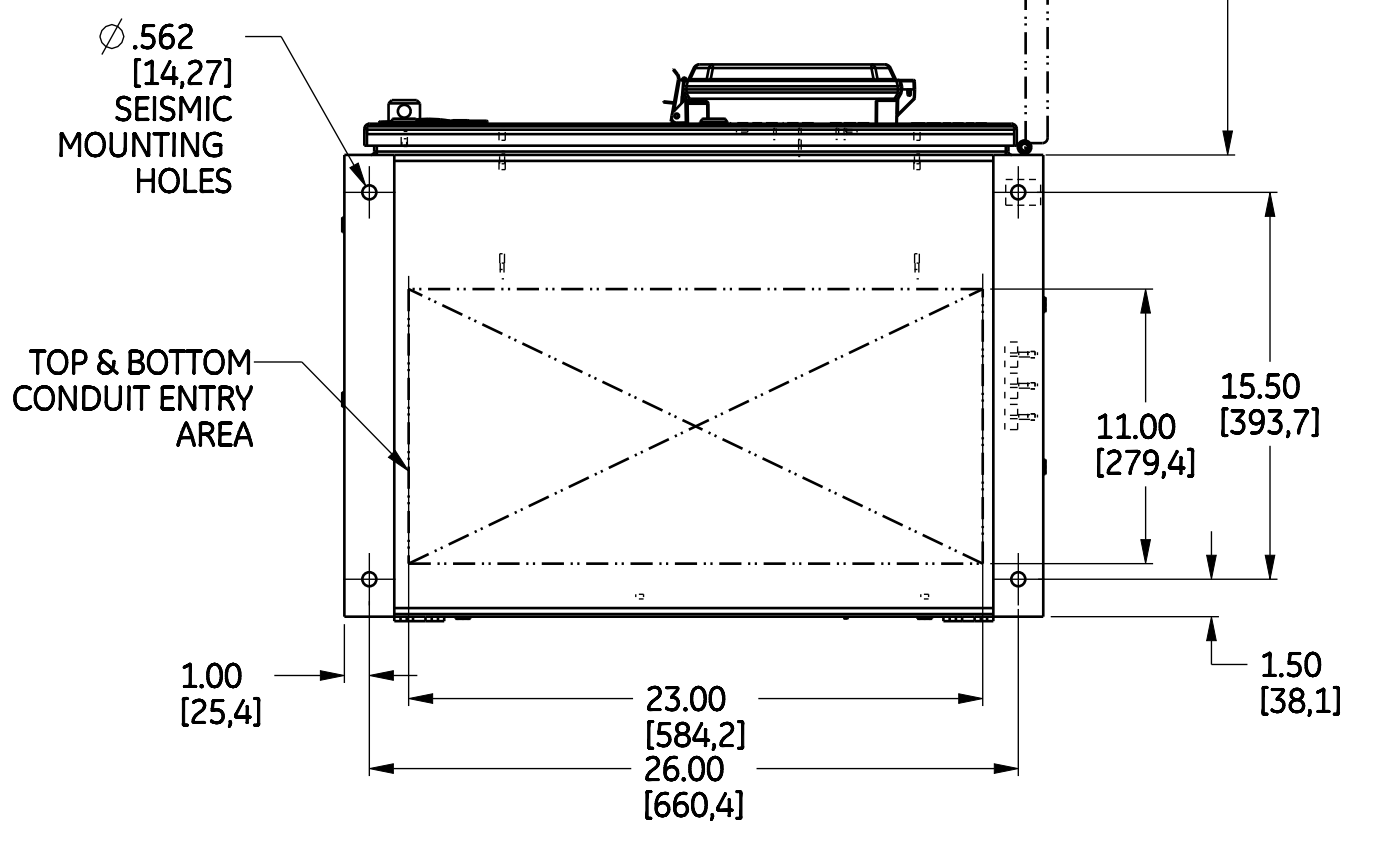
3D Model is the Master Document of Record
 All dimensions shall conform to IEC 61801-1 Procedure 3000000 Sec.14
 All dimensions shall conform to IEC 61801-1 Procedure 3000000 Sec.15
 All dimensions shall conform to IEC 61801-1 Procedure 3000000 Sec.16
 All dimensions shall conform to IEC 61801-1 Procedure 3000000 Sec.17
 All dimensions shall conform to IEC 61801-1 Procedure 3000000 Sec.18
 All dimensions shall conform to IEC 61801-1 Procedure 3000000 Sec.19
 All dimensions shall conform to IEC 61801-1 Procedure 3000000 Sec.20
 All dimensions shall conform to IEC 61801-1 Procedure 3000000 Sec.21
 All dimensions shall conform to IEC 61801-1 Procedure 3000000 Sec.22
 All dimensions shall conform to IEC 61801-1 Procedure 3000000 Sec.23
 All dimensions shall conform to IEC 61801-1 Procedure 3000000 Sec.24
 All dimensions shall conform to IEC 61801-1 Procedure 3000000 Sec.25
 All dimensions shall conform to IEC 61801-1 Procedure 3000000 Sec.26
 All dimensions shall conform to IEC 61801-1 Procedure 3000000 Sec.27
 All dimensions shall conform to IEC 61801-1 Procedure 3000000 Sec.28
 All dimensions shall conform to IEC 61801-1 Procedure 3000000 Sec.29
 All dimensions shall conform to IEC 61801-1 Procedure 3000000 Sec.30
 All dimensions shall conform to IEC 61801-1 Procedure 3000000 Sec.31
 All dimensions shall conform to IEC 61801-1 Procedure 3000000 Sec.32
 All dimensions shall conform to IEC 61801-1 Procedure 3000000 Sec.33
 All dimensions shall conform to IEC 61801-1 Procedure 3000000 Sec.34
 All dimensions shall conform to IEC 61801-1 Procedure 3000000 Sec.35
 All dimensions shall conform to IEC 61801-1 Procedure 3000000 Sec.36
 All dimensions shall conform to IEC 61801-1 Procedure 3000000 Sec.37
 All dimensions shall conform to IEC 61801-1 Procedure 3000000 Sec.38
 All dimensions shall conform to IEC 61801-1 Procedure 3000000 Sec.39
 All dimensions shall conform to IEC 61801-1 Procedure 3000000 Sec.40
 All dimensions shall conform to IEC 61801-1 Procedure 3000000 Sec.41
 All dimensions shall conform to IEC 61801-1 Procedure 3000000 Sec.42
 All dimensions shall conform to IEC 61801-1 Procedure 3000000 Sec.43
 All dimensions shall conform to IEC 61801-1 Procedure 3000000 Sec.44
 All dimensions shall conform to IEC 61801-1 Procedure 3000000 Sec.45
 All dimensions shall conform to IEC 61801-1 Procedure 3000000 Sec.46
 All dimensions shall conform to IEC 61801-1 Procedure 3000000 Sec.47
 All dimensions shall conform to IEC 61801-1 Procedure 3000000 Sec.48
 All dimensions shall conform to IEC 61801-1 Procedure 3000000 Sec.49
 All dimensions shall conform to IEC 61801-1 Procedure 3000000 Sec.50
 All dimensions shall conform to IEC 61801-1 Procedure 3000000 Sec.51
 All dimensions shall conform to IEC 61801-1 Procedure 3000000 Sec.52
 All dimensions shall conform to IEC 61801-1 Procedure 3000000 Sec.53
 All dimensions shall conform to IEC 61801-1 Procedure 3000000 Sec.54
 All dimensions shall conform to IEC 61801-1 Procedure 3000000 Sec.55
 All dimensions shall conform to IEC 61801-1 Procedure 3000000 Sec.56
 All dimensions shall conform to IEC 61801-1 Procedure 3000000 Sec.57
 All dimensions shall conform to IEC 61801-1 Procedure 3000000 Sec.58
 All dimensions shall conform to IEC 61801-1 Procedure 3000000 Sec.59
 All dimensions shall conform to IEC 61801-1 Procedure 3000000 Sec.60
 All dimensions shall conform to IEC 61801-1 Procedure 3000000 Sec.61
 All dimensions shall conform to IEC 61801-1 Procedure 3000000 Sec.62
 All dimensions shall conform to IEC 61801-1 Procedure 3000000 Sec.63
 All dimensions shall conform to IEC 61801-1 Procedure 3000000 Sec.64
 All dimensions shall conform to IEC 61801-1 Procedure 3000000 Sec.65
 All dimensions shall conform to IEC 61801-1 Procedure 3000000 Sec.66
 All dimensions shall conform to IEC 61801-1 Procedure 3000000 Sec.67
 All dimensions shall conform to IEC 61801-1 Procedure 3000000 Sec.68
 All dimensions shall conform to IEC 61801-1 Procedure 3000000 Sec.69
 All dimensions shall conform to IEC 61801-1 Procedure 3000000 Sec.70
 All dimensions shall conform to IEC 61801-1 Procedure 3000000 Sec.71
 All dimensions shall conform to IEC 61801-1 Procedure 3000000 Sec.72
 All dimensions shall conform to IEC 61801-1 Procedure 3000000 Sec.73
 All dimensions shall conform to IEC 61801-1 Procedure 3000000 Sec.74
 All dimensions shall conform to IEC 61801-1 Procedure 3000000 Sec.75
 All dimensions shall conform to IEC 61801-1 Procedure 3000000 Sec.76
 All dimensions shall conform to IEC 61801-1 Procedure 3000000 Sec.77
 All dimensions shall conform to IEC 61801-1 Procedure 3000000 Sec.78
 All dimensions shall conform to IEC 61801-1 Procedure 3000000 Sec.79
 All dimensions shall conform to IEC 61801-1 Procedure 3000000 Sec.80
 All dimensions shall conform to IEC 61801-1 Procedure 3000000 Sec.81
 All dimensions shall conform to IEC 61801-1 Procedure 3000000 Sec.82
 All dimensions shall conform to IEC 61801-1 Procedure 3000000 Sec.83
 All dimensions shall conform to IEC 61801-1 Procedure 3000000 Sec.84
 All dimensions shall conform to IEC 61801-1 Procedure 3000000 Sec.85
 All dimensions shall conform to IEC 61801-1 Procedure 3000000 Sec.86
 All dimensions shall conform to IEC 61801-1 Procedure 3000000 Sec.87
 All dimensions shall conform to IEC 61801-1 Procedure 3000000 Sec.88
 All dimensions shall conform to IEC 61801-1 Procedure 3000000 Sec.89
 All dimensions shall conform to IEC 61801-1 Procedure 3000000 Sec.90
 All dimensions shall conform to IEC 61801-1 Procedure 3000000 Sec.91
 All dimensions shall conform to IEC 61801-1 Procedure 3000000 Sec.92
 All dimensions shall conform to IEC 61801-1 Procedure 3000000 Sec.93
 All dimensions shall conform to IEC 61801-1 Procedure 3000000 Sec.94
 All dimensions shall conform to IEC 61801-1 Procedure 3000000 Sec.95
 All dimensions shall conform to IEC 61801-1 Procedure 3000000 Sec.96
 All dimensions shall conform to IEC 61801-1 Procedure 3000000 Sec.97
 All dimensions shall conform to IEC 61801-1 Procedure 3000000 Sec.98
 All dimensions shall conform to IEC 61801-1 Procedure 3000000 Sec.99
 All dimensions shall conform to IEC 61801-1 Procedure 3000000 Sec.100

4 POLE - 400A
 FLOOR MOUNT UNIT
 SEE SHEET 3 & 5 FOR INSIDE DETAILS



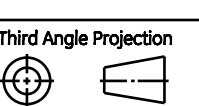
FRONT VIEW

SIDE VIEW

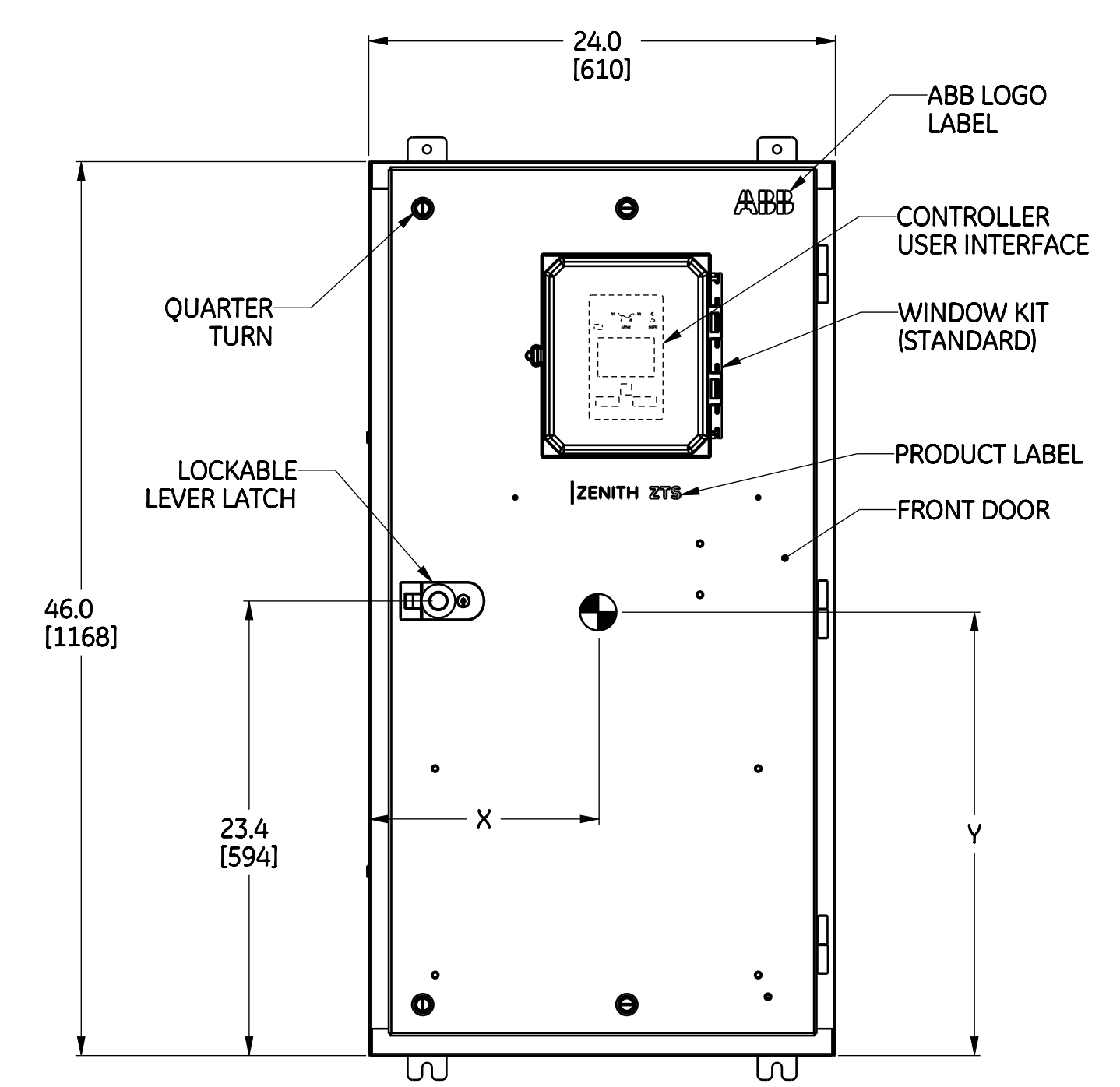


BOTTOM VIEW

- NOTES
- ENCLOSURE : NEMA 4X TYPE, FREE STANDING, FLOOR MOUNT.
 - MATERIAL: 12 GA (.1045) 304 SS REF.
 - FINISH : #4 FINISH

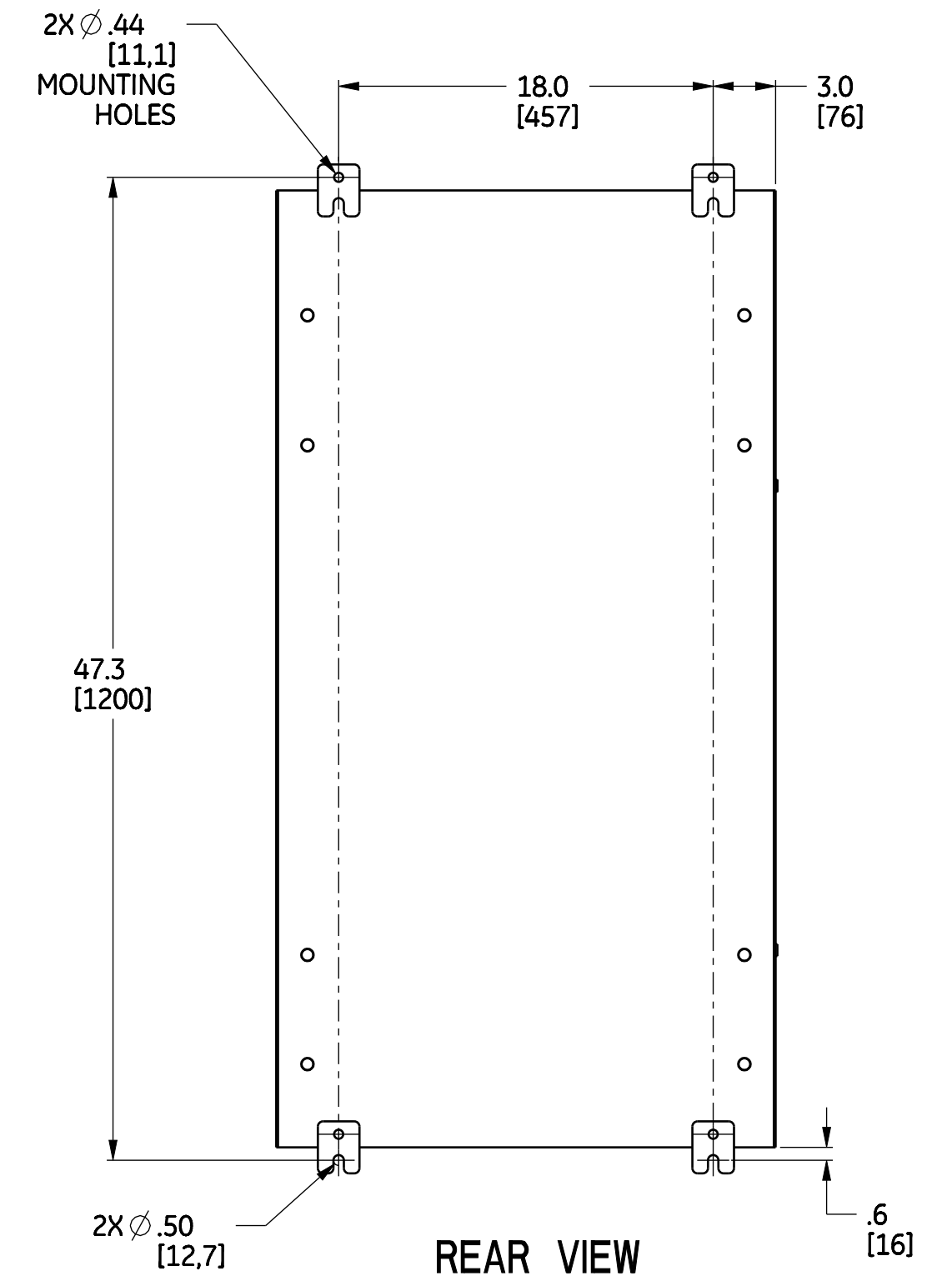


3 POLE - 400A
 3 & 4 POLE - 260A
 WALL MOUNT UNIT
 SEE SHEET 2 & 4 FOR INSIDE DETAILS

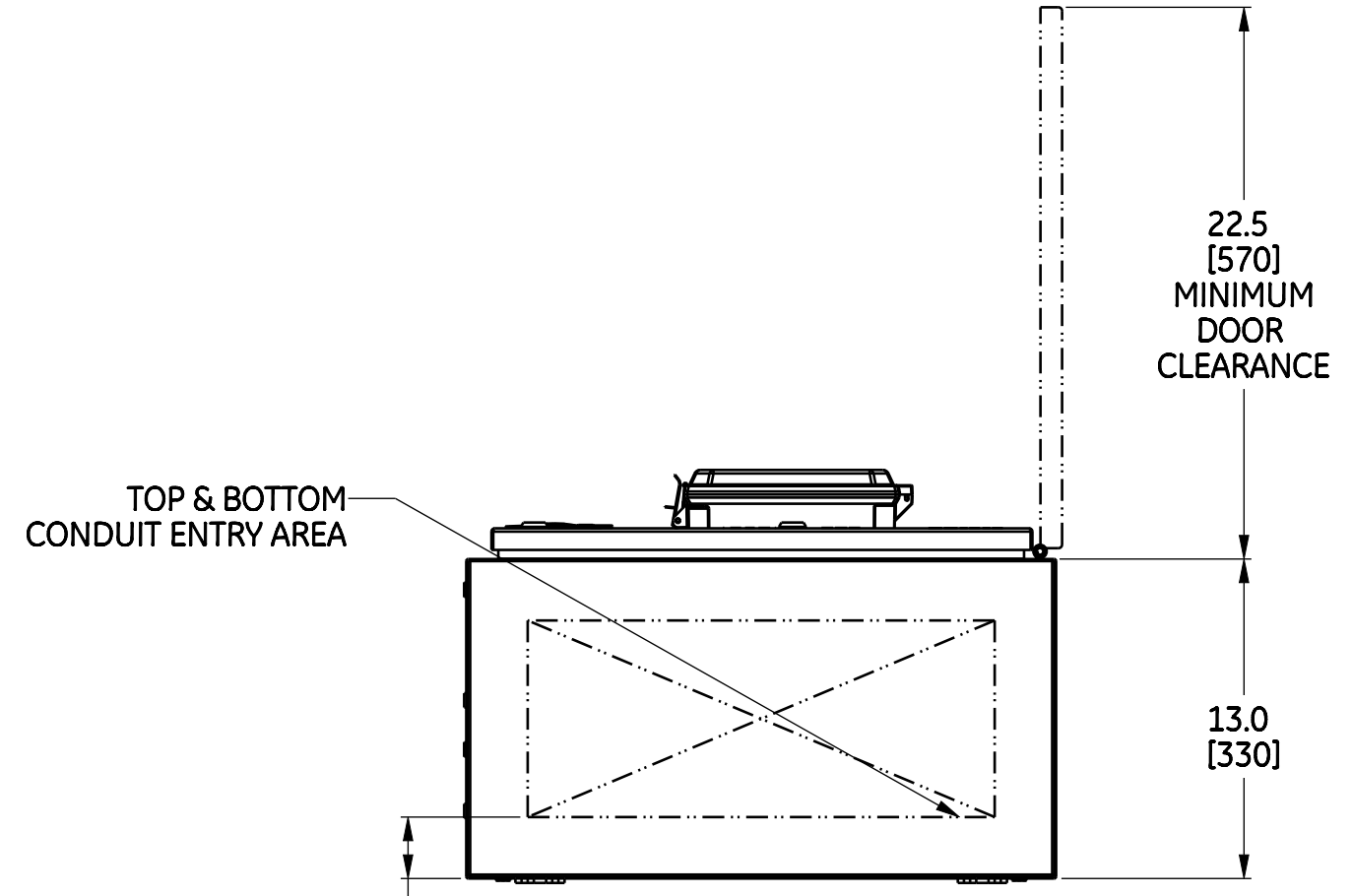


FRONT VIEW

SIDE VIEW



REAR VIEW



BOTTOM VIEW

- NOTES
- ENCLOSURE : NEMA 4X TYPE, WALL MOUNT.
 - MATERIAL: 14 GA (.0747) 304 SS REF.
 - FINISH : #4 FINISH

GENERAL NOTES:

- CONSTRUCTION PER UL 1008 STANDARD.
- FRONT ACCESSIBLE UNIT. NO SIDE OR REAR ACCESS REQUIRED.
- SUITABLE WIRE BENDING SPACE PROVIDED PER THE SAFETY AGENCY STANDARDS.
- UL AND CSA RECOGNIZED/CERTIFIED MECHANICAL LUGS ARE STANDARD.
- UL AND CSA RECOGNIZED/CERTIFIED COMPRESSION LUGS ARE AVAILABLE AS OPTION.
- EQUIPMENT GROUND LUG IS PROVIDED IN ALL UNITS. SEE SHEETS 2-5 FOR DETAILS.
- ALL DIMENSIONS ARE FOR REFERENCE ONLY AND SHOWN IN INCHES (MILLIMETERS).
- 100% RATED SOLID/SWITCHED NEUTRAL PROVIDED PER THE SWITCH CONFIGURATION.
- SUITABLE FOR TOP AND/OR BOTTOM CABLE ENTRY.
- FOR CABLE CONNECTIONS TO MECHANICAL LUG, REFER O&M MANUAL FOR TORQUE DETAILS
- FOR WORKING CLEARANCE REFER TO NATIONAL AND LOCAL CODES AND STANDARDS.

LUG ASSEMBLY	AMP	POLE	CONTROLLER TYPE	CABINET #	LUG RANGE	WEIGHT			CENTER OF GRAVITY IN (MM)			
						LB (KG)	X	Y	Z			
MECHANICAL LUGS	260A	3	SEE TABLE A	F-2013MPX	250 KCMIL-1/0 (OR)	154(70)	11.5 (292)	23.0 (584)	7.5 (190)	13.7(348)	30.1(764)	9.7(246)
		161(73)										
	400A	3			600 KCMIL-#4	163(74)						
		4				296(134)						
COMPRESSION LUGS	260A	3	SEE TABLE A	F-2013MPX	QTY 1	154(70)	11.5 (292)	23.0 (584)	7.5 (190)	13.7(348)	30.1(764)	9.7(246)
		161(73)										
	400A	3			QTY 1	163(74)						
		4				296(134)						

TABLE A - HMI

TYPE	TRANSITION	LEVEL	PART NO.
ZTS	OPEN	4	OXAM11-L4
ZTSD	DELAYED	4	OXBM11-L4

SEISMIC NOTES:

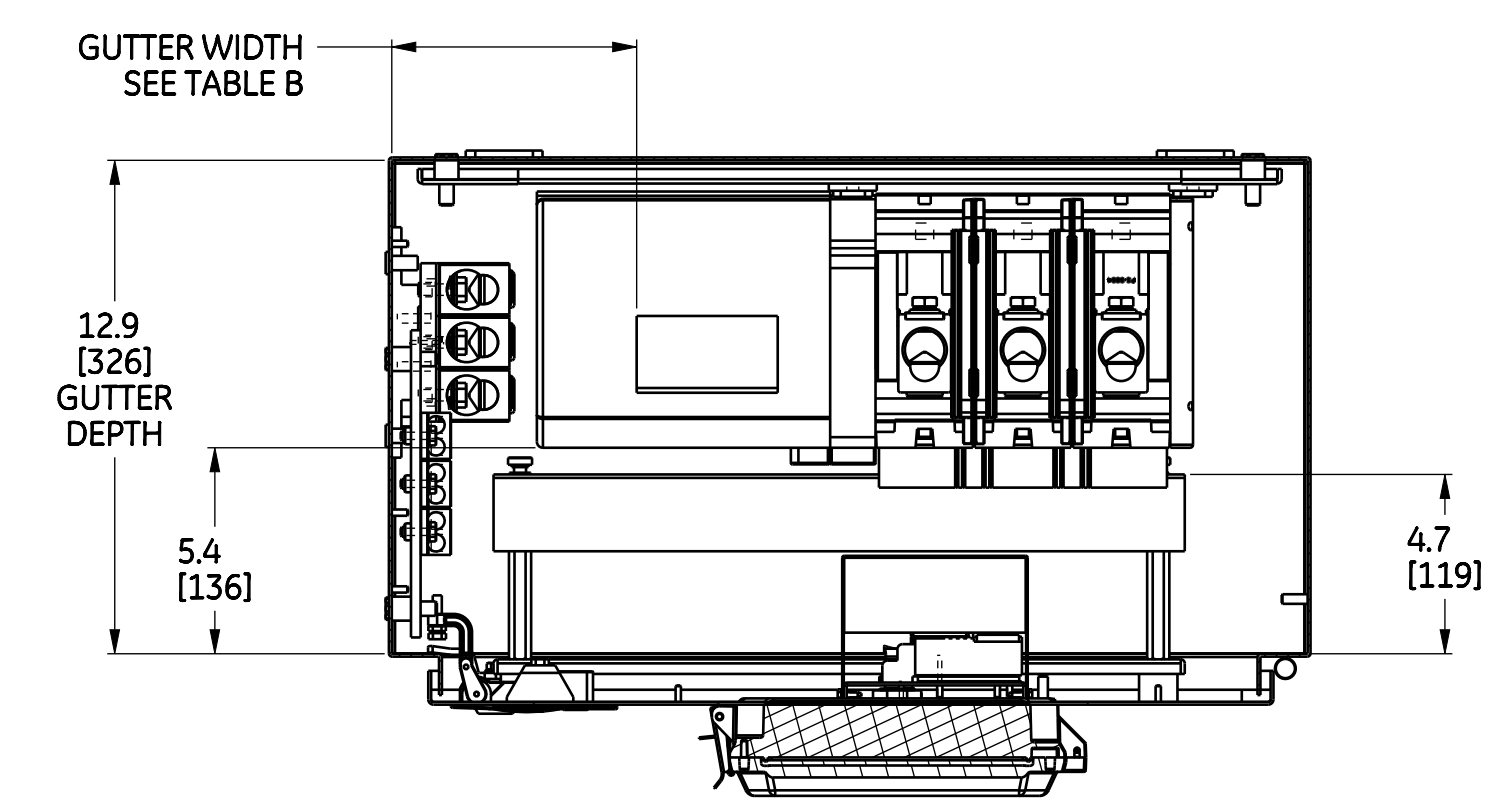
- BOLT ENCLOSURES USING THE FOLLOWING SEISMIC CERTIFIED MOUNTING HARDWARE PER MOUNTING HOLE: (HARDWARE PROVIDED BY INSTALLER).
 - 1/2-13 GRADE 5 BOLT TORQUE TO 75 FT-LBS. (102 NEWTON METERS).
 - 1/2-13 STANDARD FLAT WASHER.
 - 1/2 (13) HELICAL SPRING LOCK WASHER.
- CENTER OF GRAVITY DIMENSIONS ARE FOR REFERENCE ONLY.

DRAWING FILE: 50C-1081		MODEL FILE: 50C-1081		ABB		
DATE MODIFIED: 2024-04-08		DESIGNED BY: SR				
VOLUME: 0.000 in^3		CH#: ECN000350989		APPROVED BY: MS		TITLE: ZTS(D) 260A-400A, TYPE 4X
MASS: 0.000 lbm		MATERIAL SPECIFICATION: ---		FINISH SPECIFICATION: ---		UNITS: in
UNLESS OTHERWISE SPECIFIED		MATERIAL DESCRIPTION: ---		FINISH DESCRIPTION: ---		SCALE: 1:5
TOLERANCES: 1/16 DECIMALS ± 0.12, 1/32 DECIMALS ± 0.02, 3/16 DECIMALS ± 0.06, ANGLES ± 10		SIZE: D		ROOT NUMBER: 50C-1081		REV: B
				PRODUCT LINE: ZENITH ZTS T-SERIES		RELEASE STATE: Released
						SHEET: 1 of 5

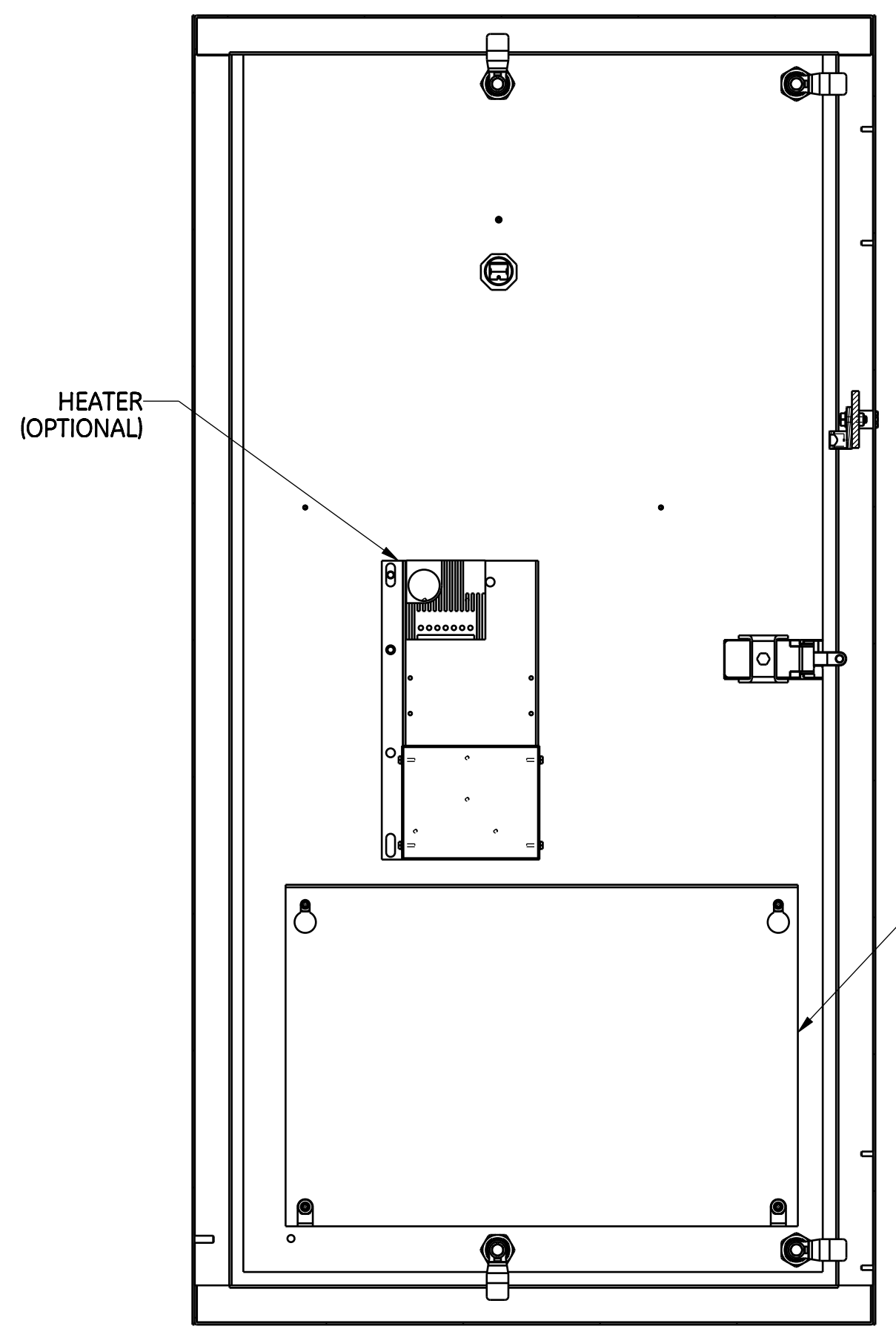
CABINET WITH MECHANICAL LUG ASSY
(AVAILABLE AS STANDARD)

3 POLE - 400A
3 & 4 POLE - 260A

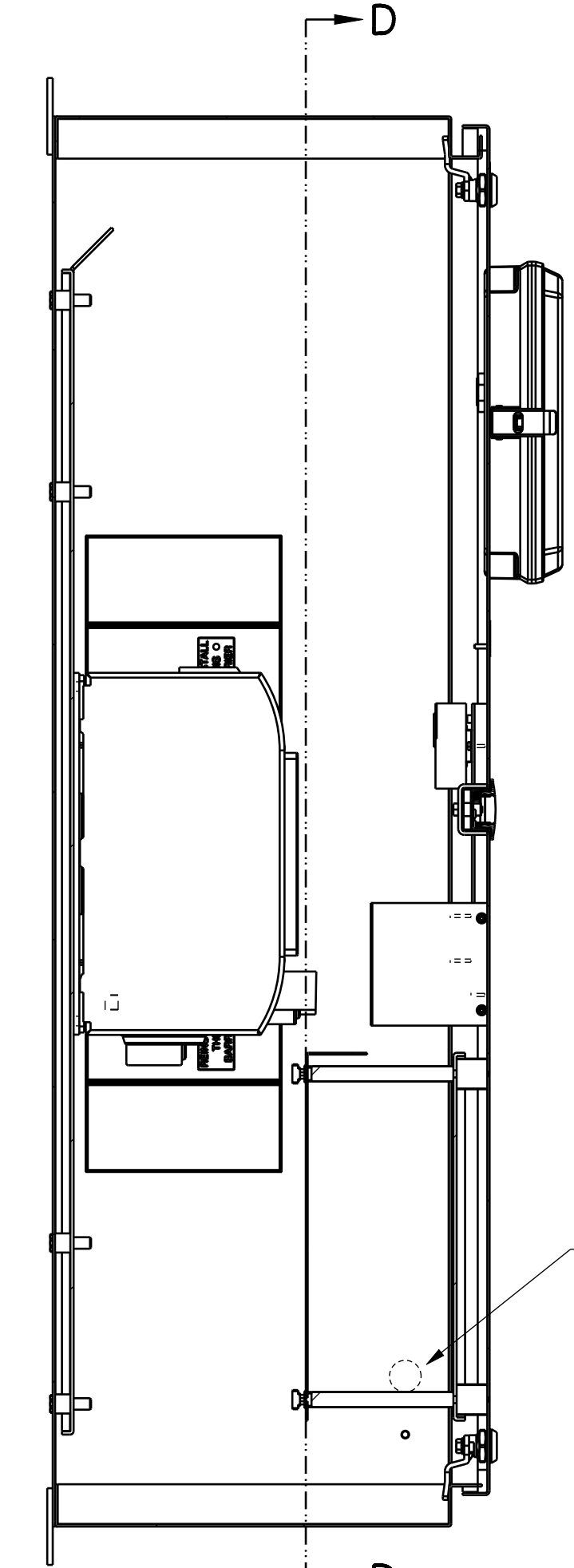
TABLE B - GUTTER WIDTH		
	POLES	
260A	3	3.7 (86)
260A	4	3.4 (94)
400A	3	3.7 (94)



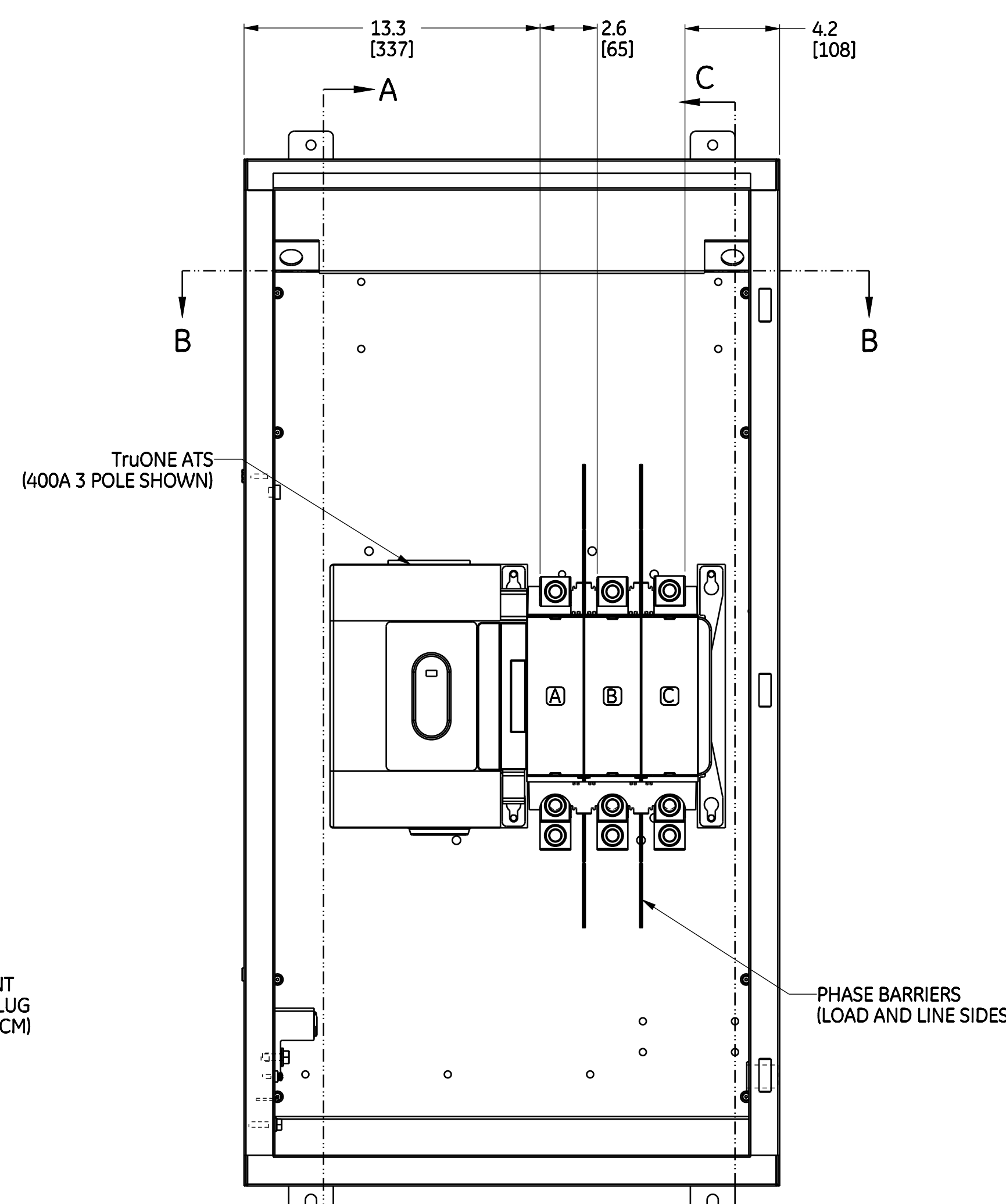
SECTION B-B
TOP VIEW
WITHOUT TOP PANEL



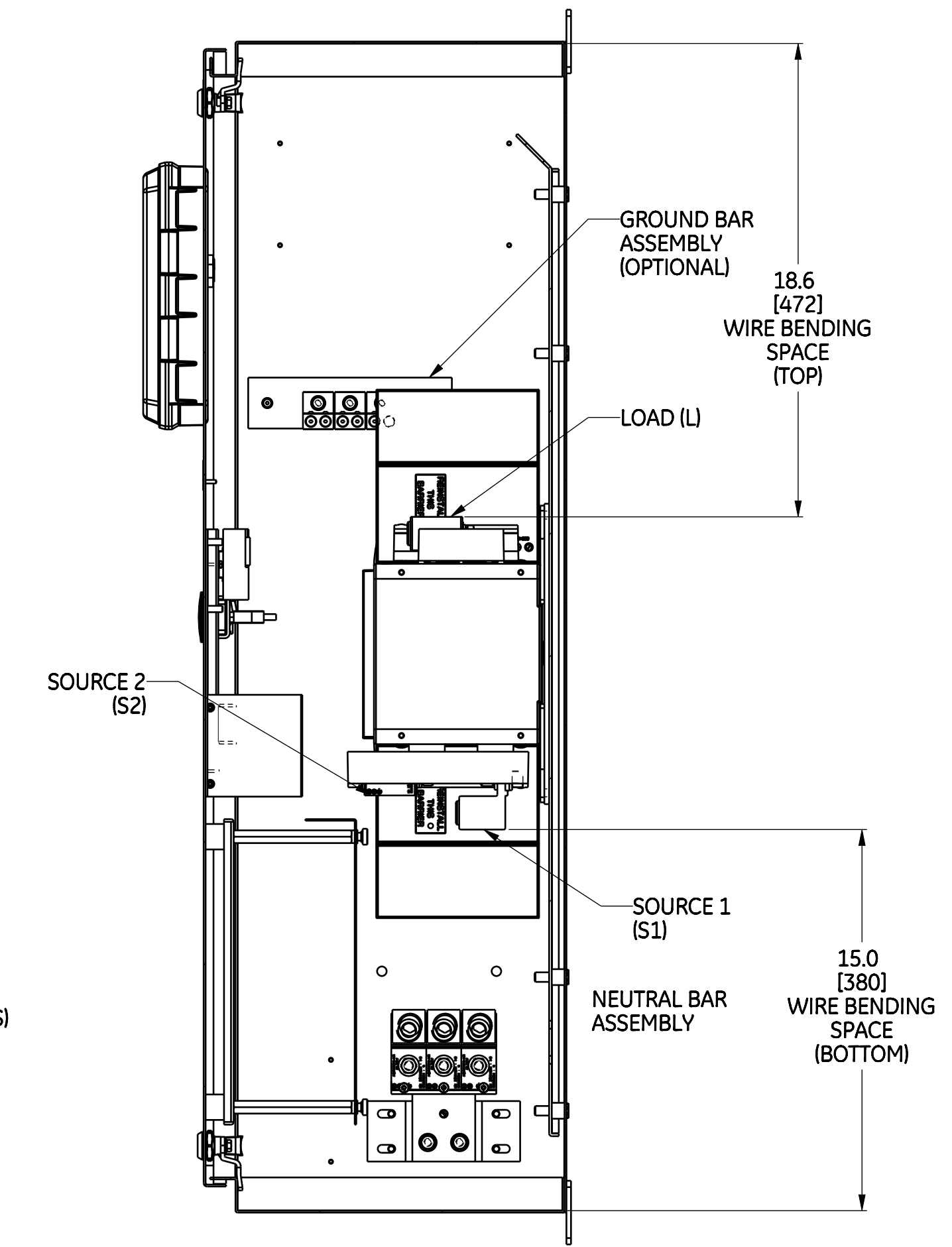
SECTION D-D
DOOR INSIDE VIEW



SECTION A-A



SECTION A
FRONT VIEW
WITHOUT DOOR
(3 POLE SWITCH SHOWN)



SECTION C-C
RIGHT SIDE VIEW
WITHOUT SIDE PANEL

NOTE:
FOR SINGLE PHASE SWITCHED NEUTRAL (3-POLE) UNIT, THE NEUTRAL POLE WILL BE NEXT TO MECHANISM
AND PHASE A AND PHASE B POLES WILL BE NEXT TO NEUTRAL POLE

NOTE:
1. REFER TO SHEET (1) FOR COMPLETE NOTE DETAILS
2. MECHANICAL LUGS SHOWN IN ABOVE VIEWS ARE FOR REFERENCE ONLY.

ABB PROPRIETARY AND CONFIDENTIAL INFORMATION
The information contained in this document has to be kept strictly confidential.
Any unauthorized use, reproduction, distribution or disclosure to third parties is strictly forbidden.
ABB reserves the right to change specifications without notice.
Copyright © 2024 ABB. All rights reserved.

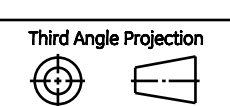
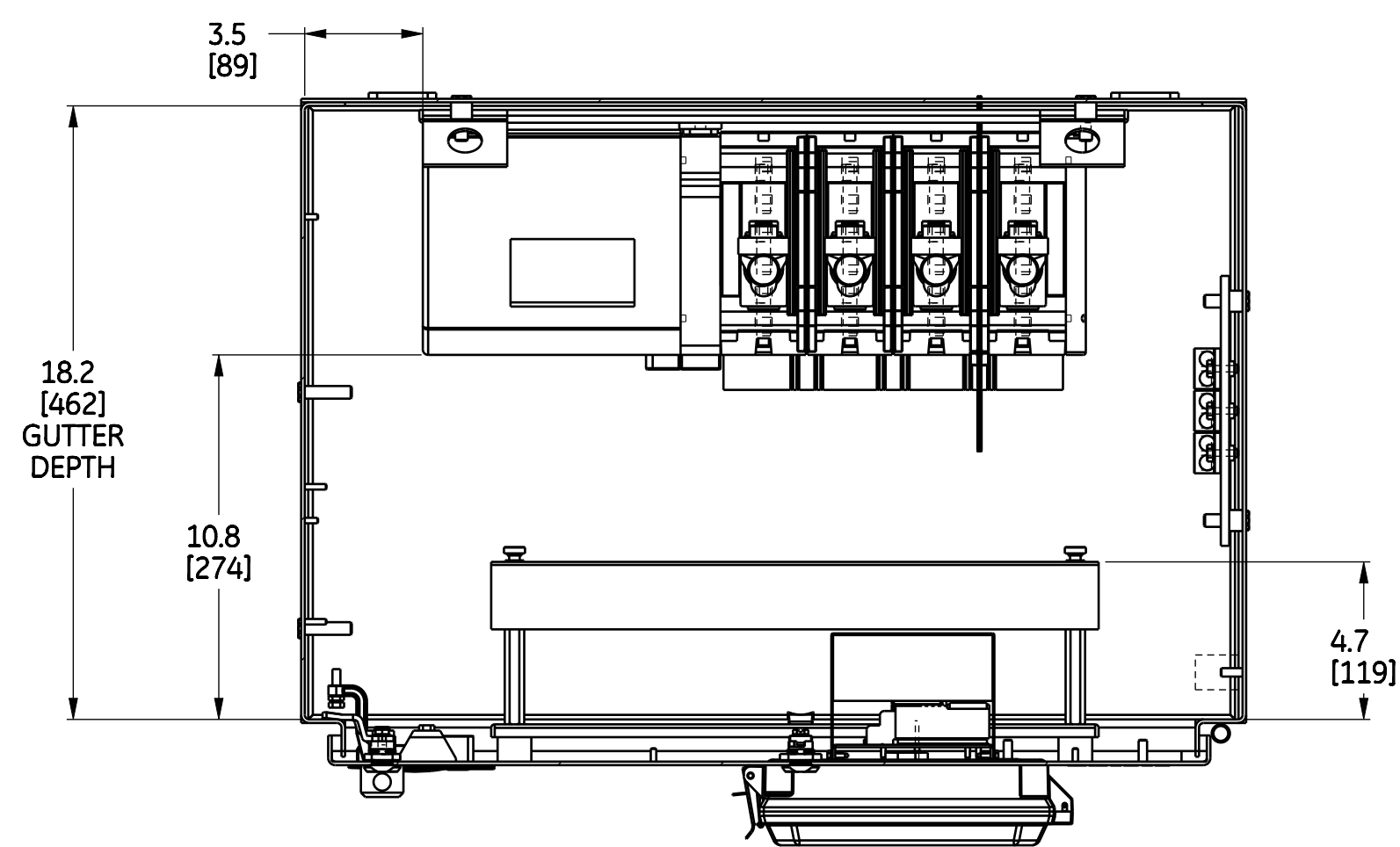
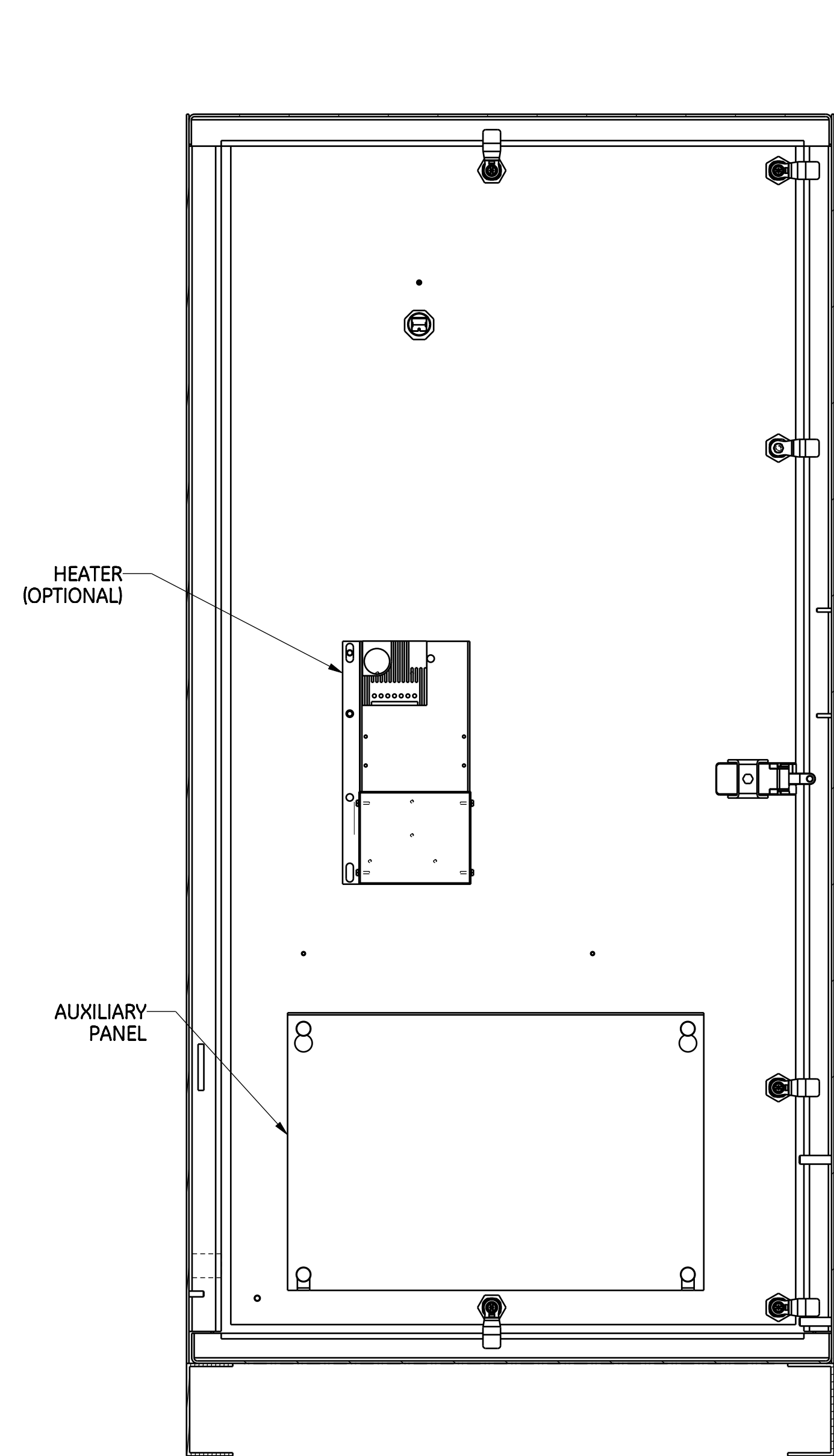


ABB			
SIZE	NUMBER	REV	B
D	50C-1081		
SCALE	PRODUCT LINE	SHEET	2 of 5
1:5	ZENITH ZTS T-SERIES		

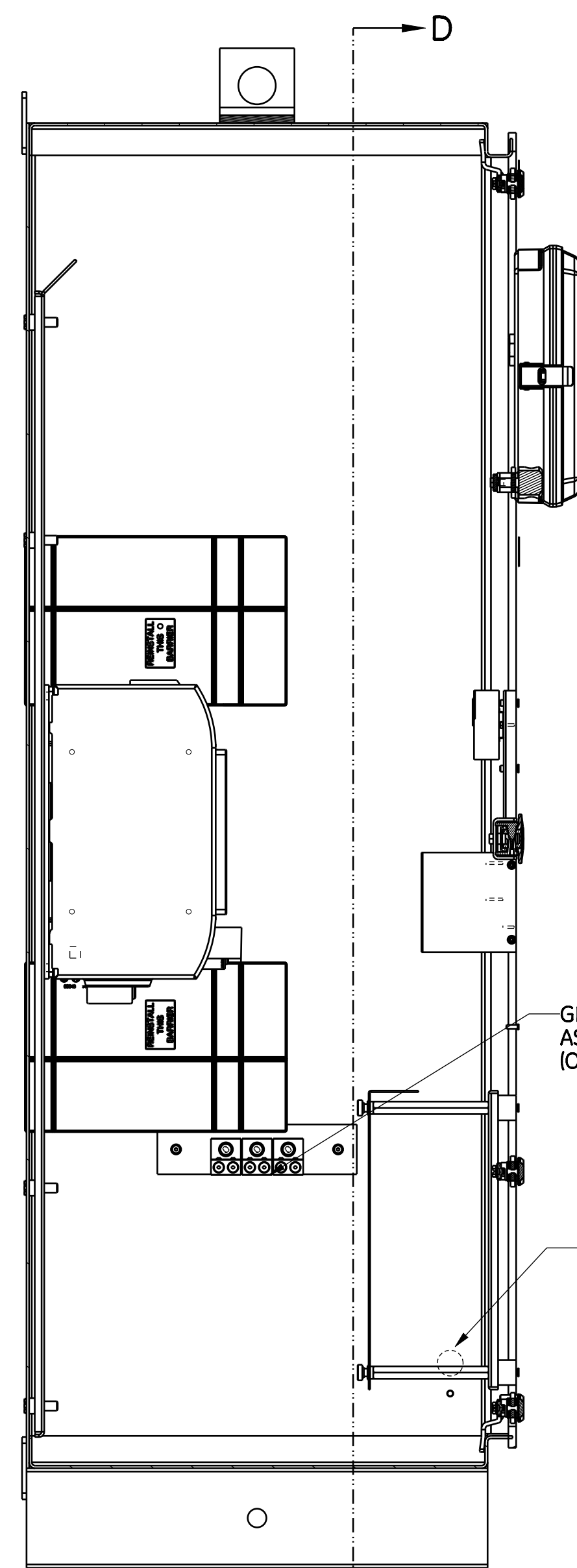
CABINET WITH MECHANICAL LUG ASSY
(AVAILABLE AS STANDARD)
4 POLE - 400A



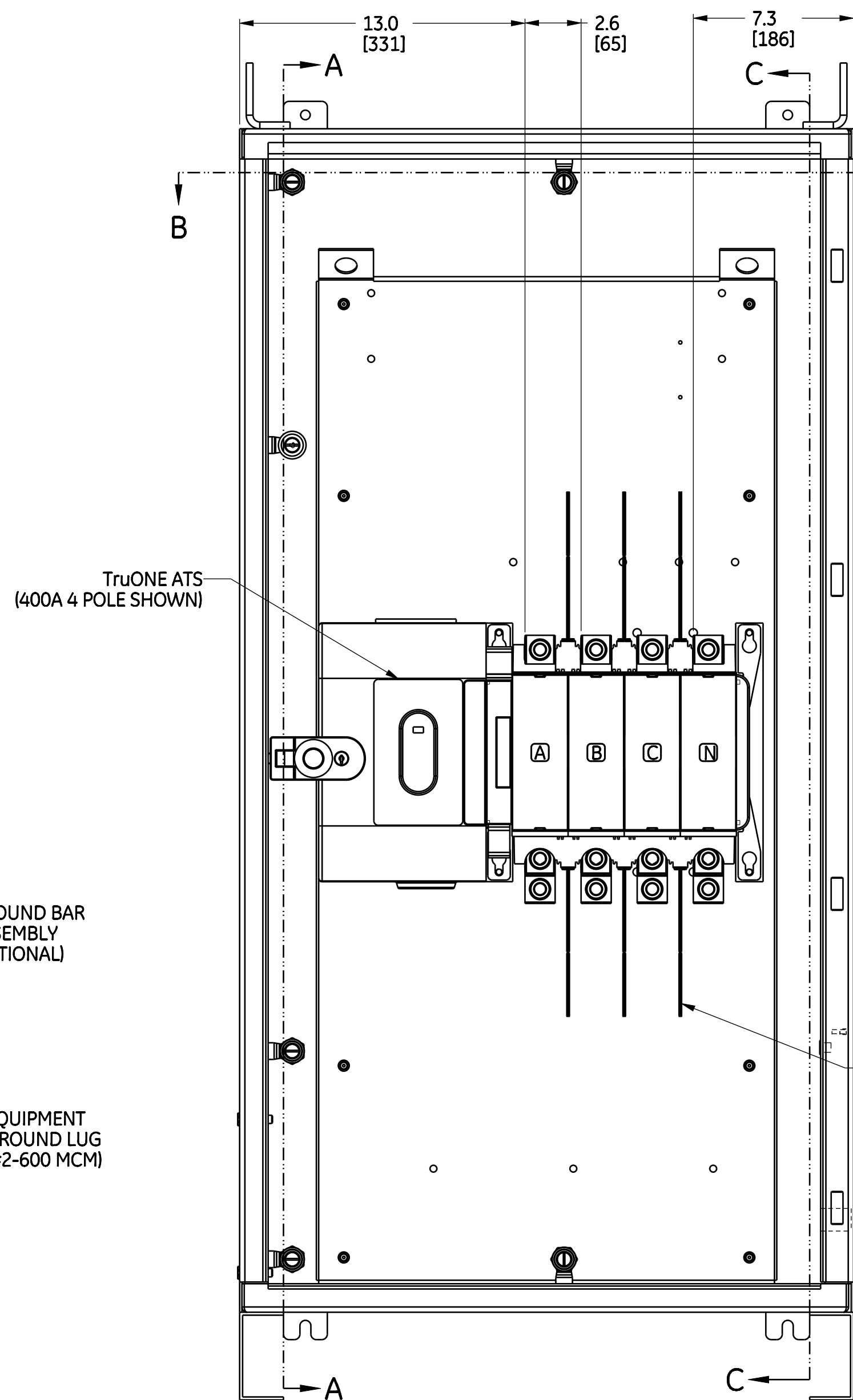
SECTION B-B
TOP VIEW
WITHOUT TOP PANEL



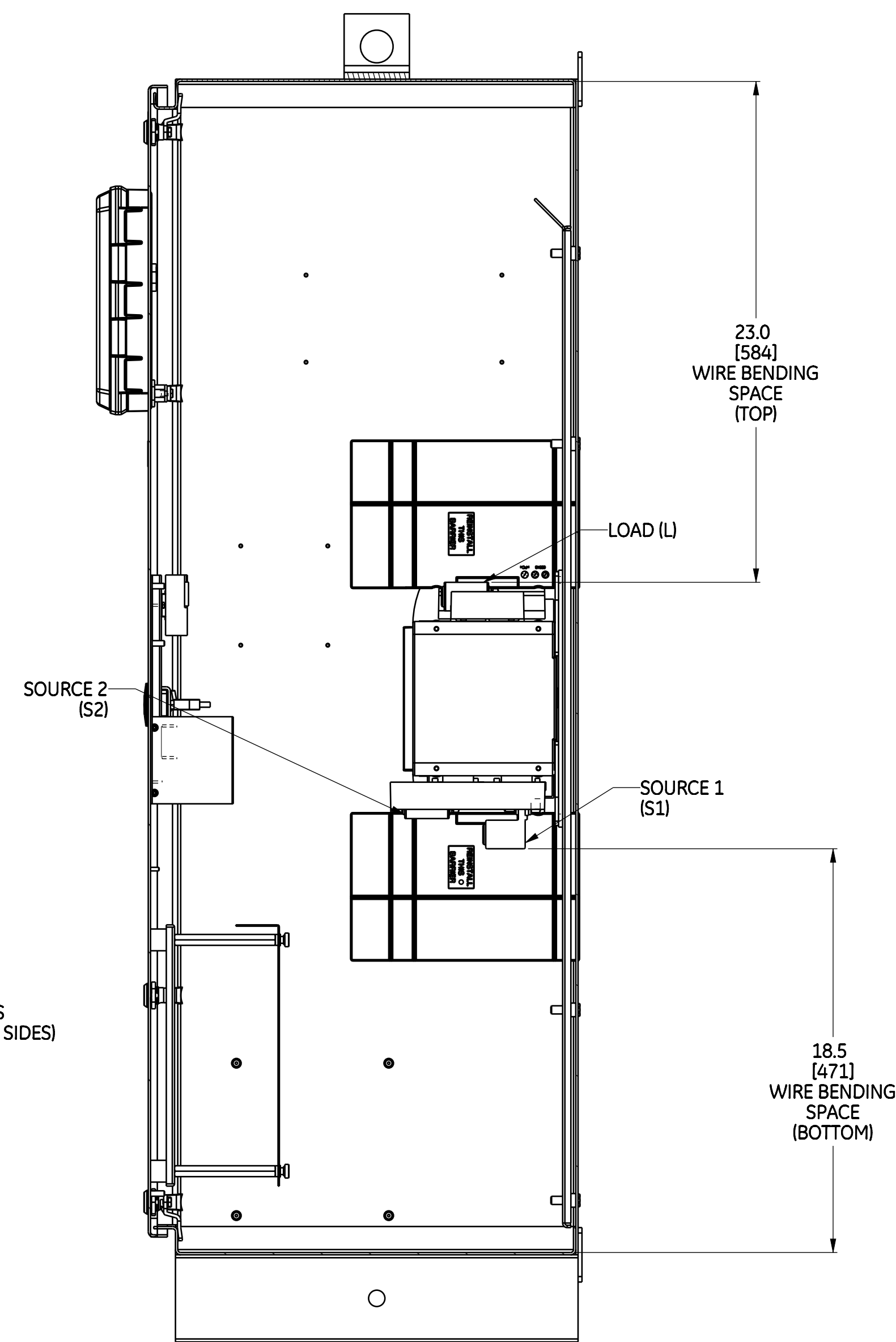
SECTION D-D
DOOR INSIDE VIEW



SECTION A-A
LEFT VIEW
WITHOUT SIDE PANEL



FRONT VIEW
WITHOUT DOOR
(4 POLE SWITCH SHOWN)



SECTION C-C
LEFT SIDE
WITHOUT SIDE PANEL
AND PHASE BARRIERS

NOTE:
FOR SINGLE PHASE SWITCHED NEUTRAL(3-POLE) UNIT, THE NEUTRAL POLE WILL BE NEXT TO MECHANISM
AND PHASE A AND PHASE B POLES WILL BE NEXT TO NEUTRAL POLE

NOTE:
1. REFER TO SHEET (1) FOR COMPLETE NOTE DETAILS
2. MECHANICAL LUGS SHOWN IN ABOVE VIEWS ARE FOR REFERENCE ONLY.

ABB PROPRIETARY AND CONFIDENTIAL INFORMATION
The information contained in this document has to be kept strictly confidential.
Any unauthorized use, reproduction, distribution or disclosure to third parties is strictly forbidden.
ABB reserves all rights. Copyright © 2024 ABB. All rights reserved.

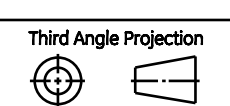
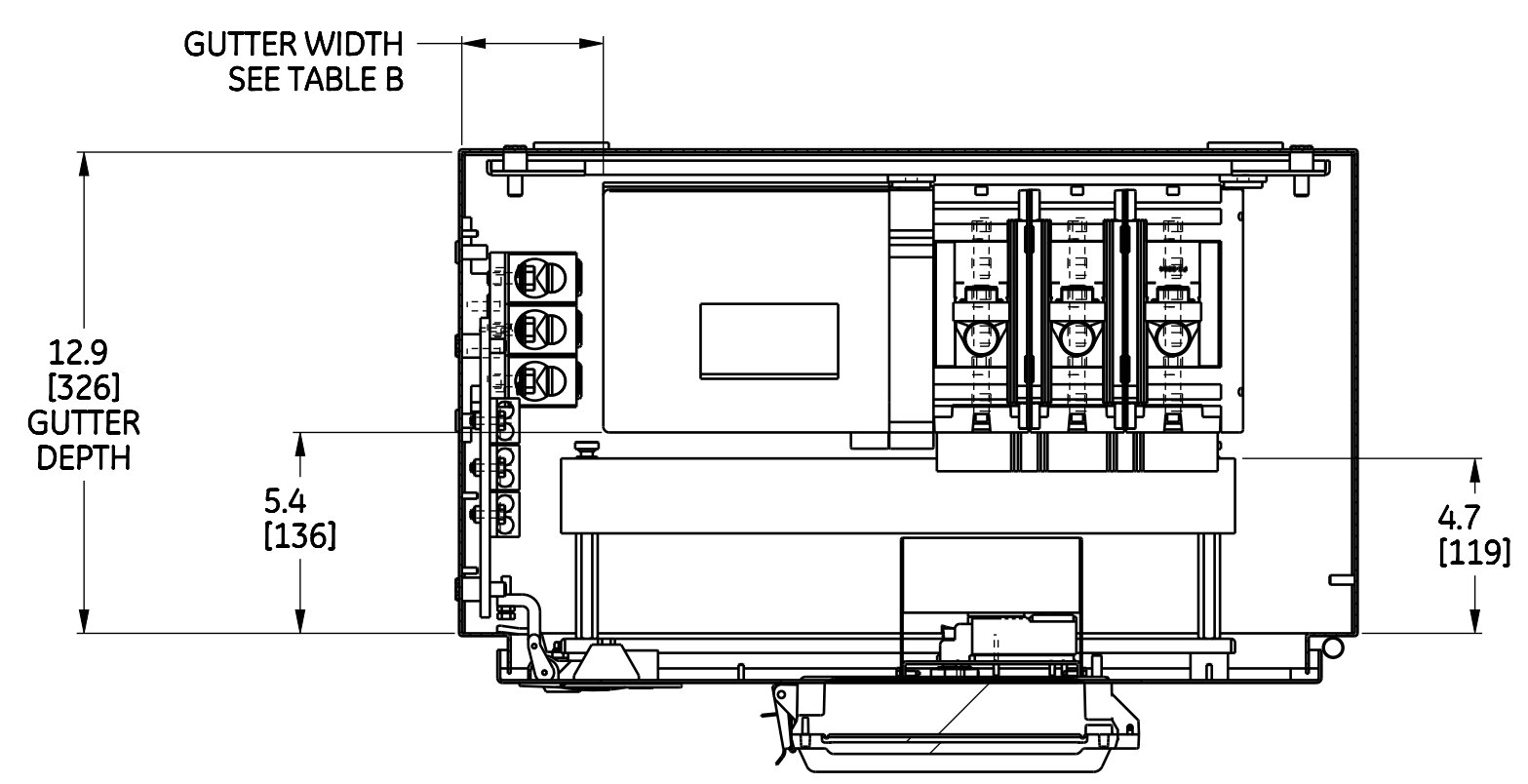


ABB		
SIZE D	NUMBER 50C-1081	REV B
SCALE 1:5	PRODUCT LINE ZENITH ZTS T-SERIES	SHEET 3 of 5

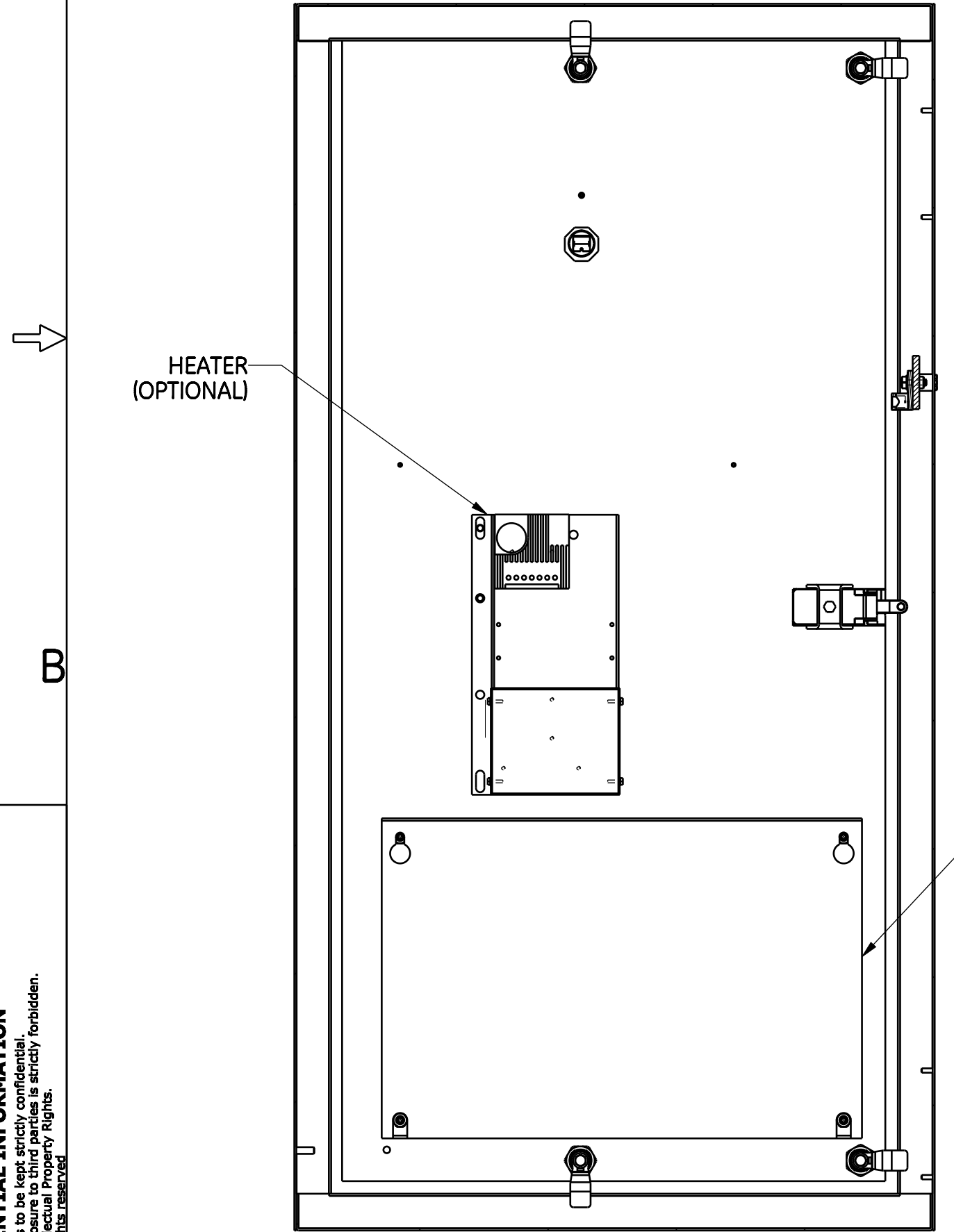
CABINET WITH COMPRESSION LUG ASSY
(AVAILABLE AS OPTION)

3 POLE - 400A
3 & 4 POLE - 260A

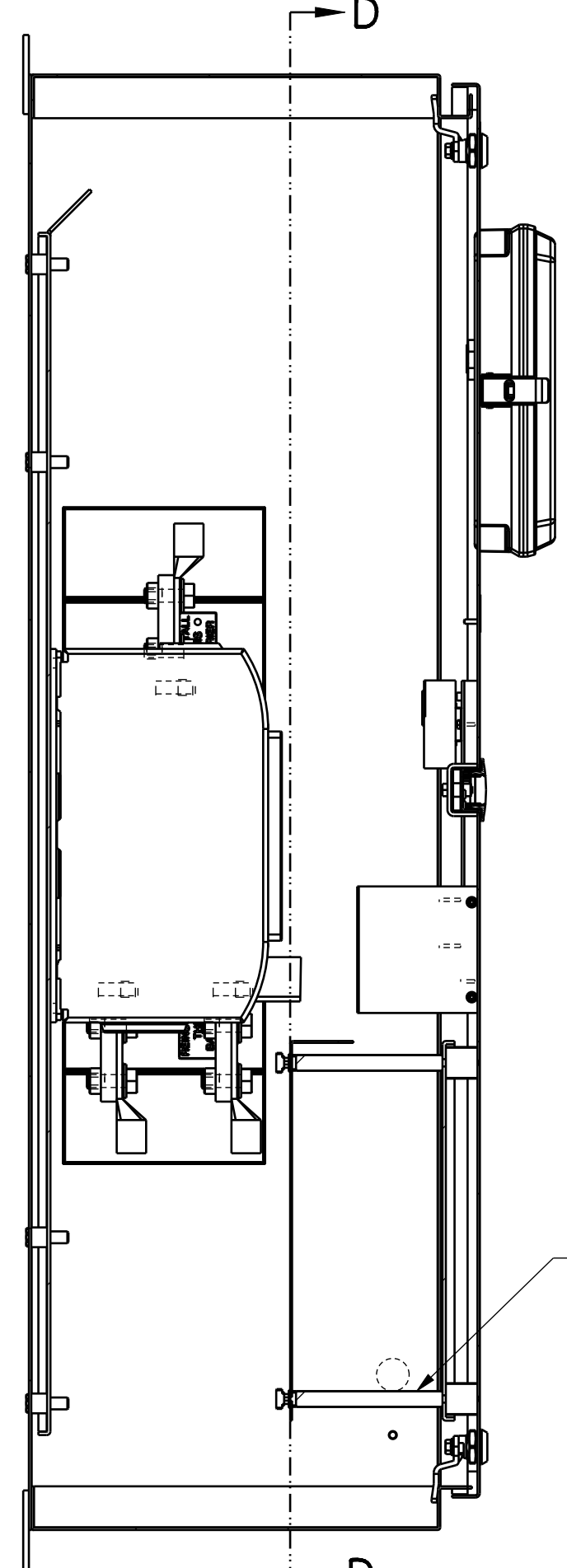
TABLE B - GUTTER WIDTH		
	POLES	
260A	3	3.7 (86)
260A	4	3.4 (94)
400A	3	3.7 (94)



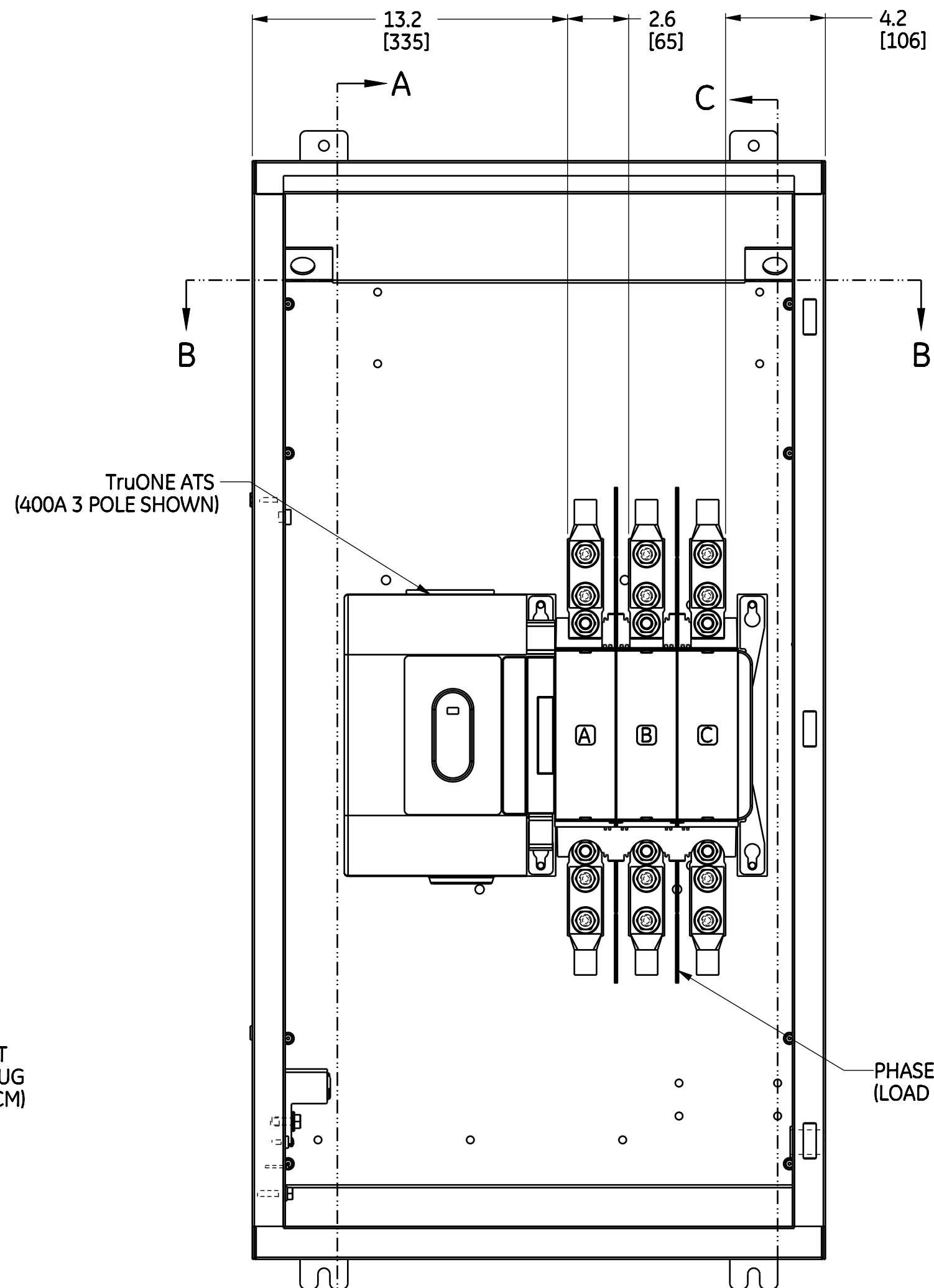
SECTION B-B
TOP VIEW
WITHOUT TOP PANEL



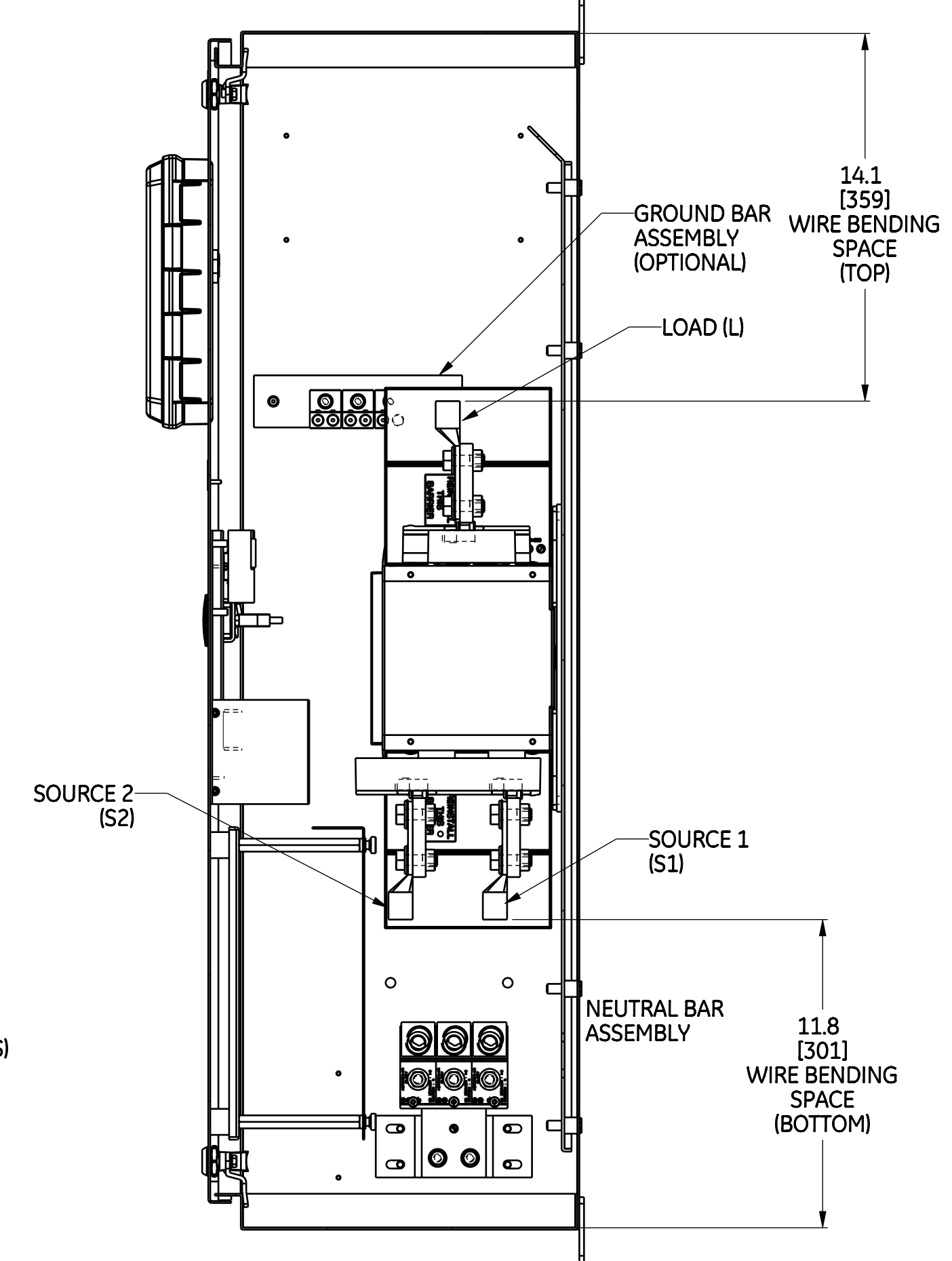
SECTION D-D
DOOR INSIDE VIEW



SECTION A-A

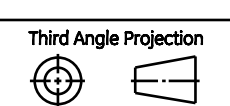


FRONT VIEW
WITHOUT DOOR
(3 POLE SWITCH SHOWN)



SECTION C-C
RIGHT SIDE VIEW
WITHOUT SIDE PANEL

ABB PROPRIETARY AND CONFIDENTIAL INFORMATION
The information contained in this document has to be kept strictly confidential.
Any unauthorized use, reproduction, distribution or disclosure to third parties is strictly forbidden.
ABB reserves the right to change specifications without notice.
Copyright © 2024 ABB. All rights reserved.

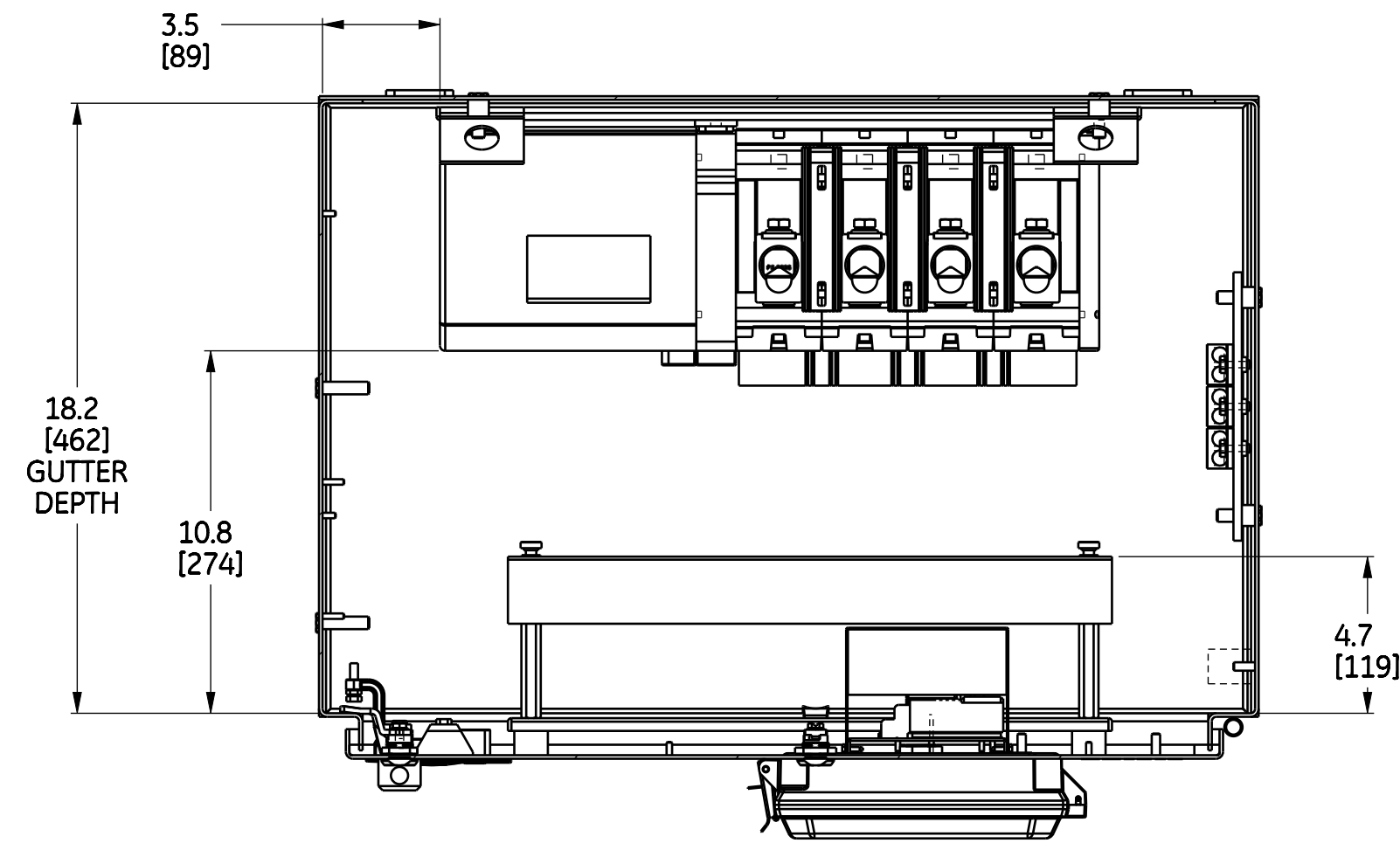


NOTE:
FOR SINGLE PHASE SWITCHED NEUTRAL(3-POLE) UNIT, THE NEUTRAL POLE WILL BE NEXT TO MECHANISM
AND PHASE A AND PHASE B POLES WILL BE NEXT TO NEUTRAL POLE

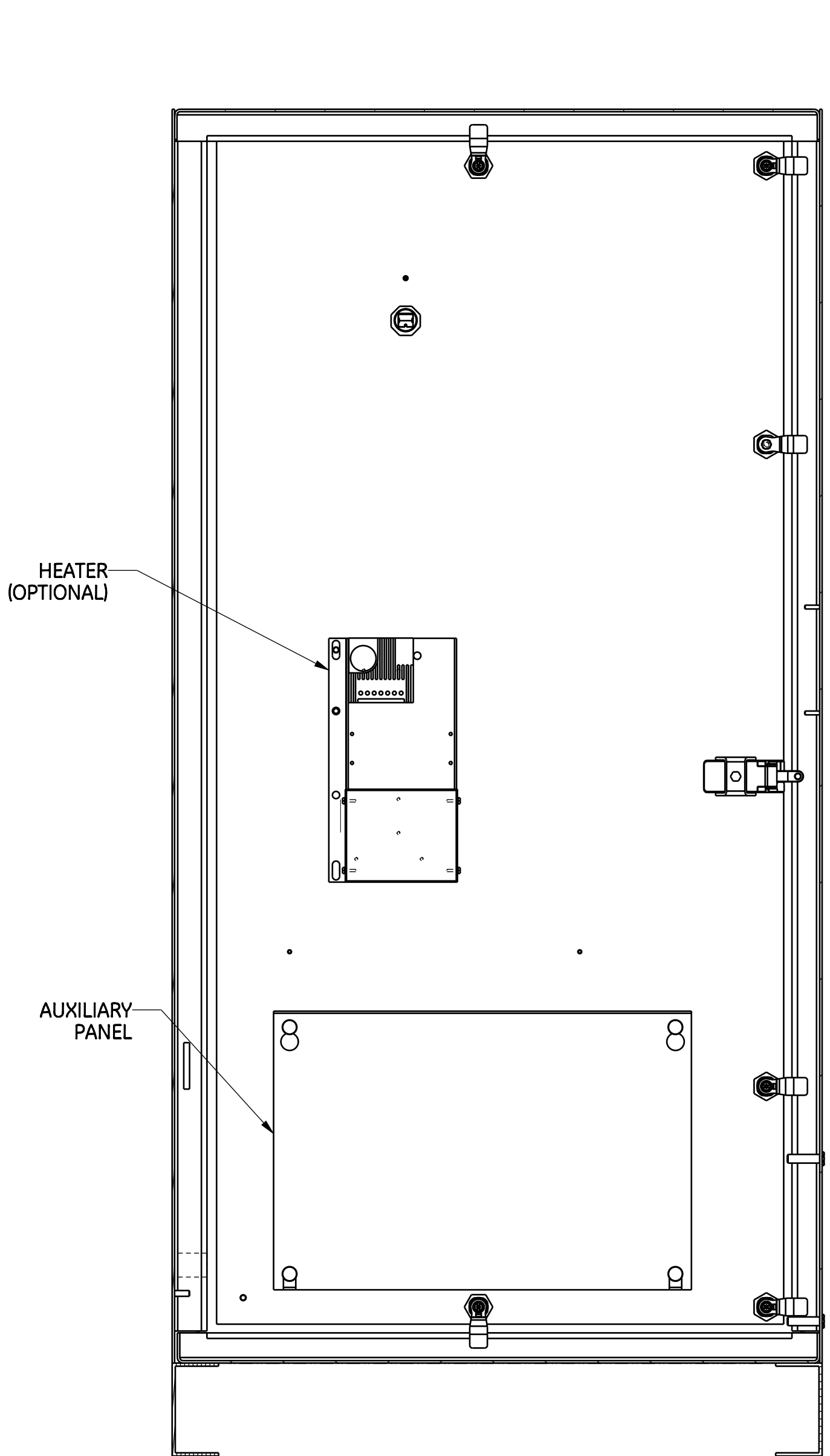
NOTE:
1. REFER TO SHEET (1) FOR COMPLETE NOTE DETAILS
2. MECHANICAL LUGS SHOWN IN ABOVE VIEWS ARE FOR REFERENCE ONLY.

ABB			
SIZE	NUMBER	REV	
D	50C-1081	B	
SCALE	PRODUCT LINE	SHEET	
1:5	ZENITH ZTS T-SERIES	4 of 5	

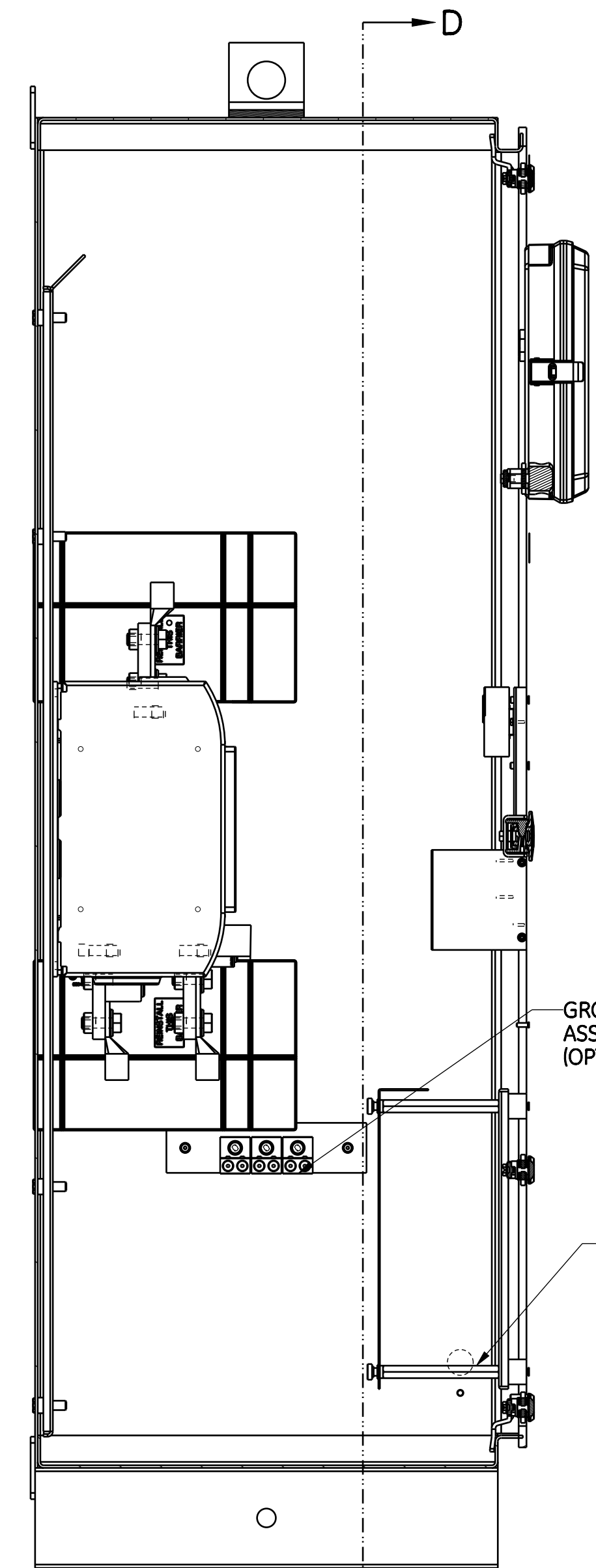
CABINET WITH COMPRESSION LUG ASSY
(AVAILABLE AS OPTION)
4 POLE - 400A



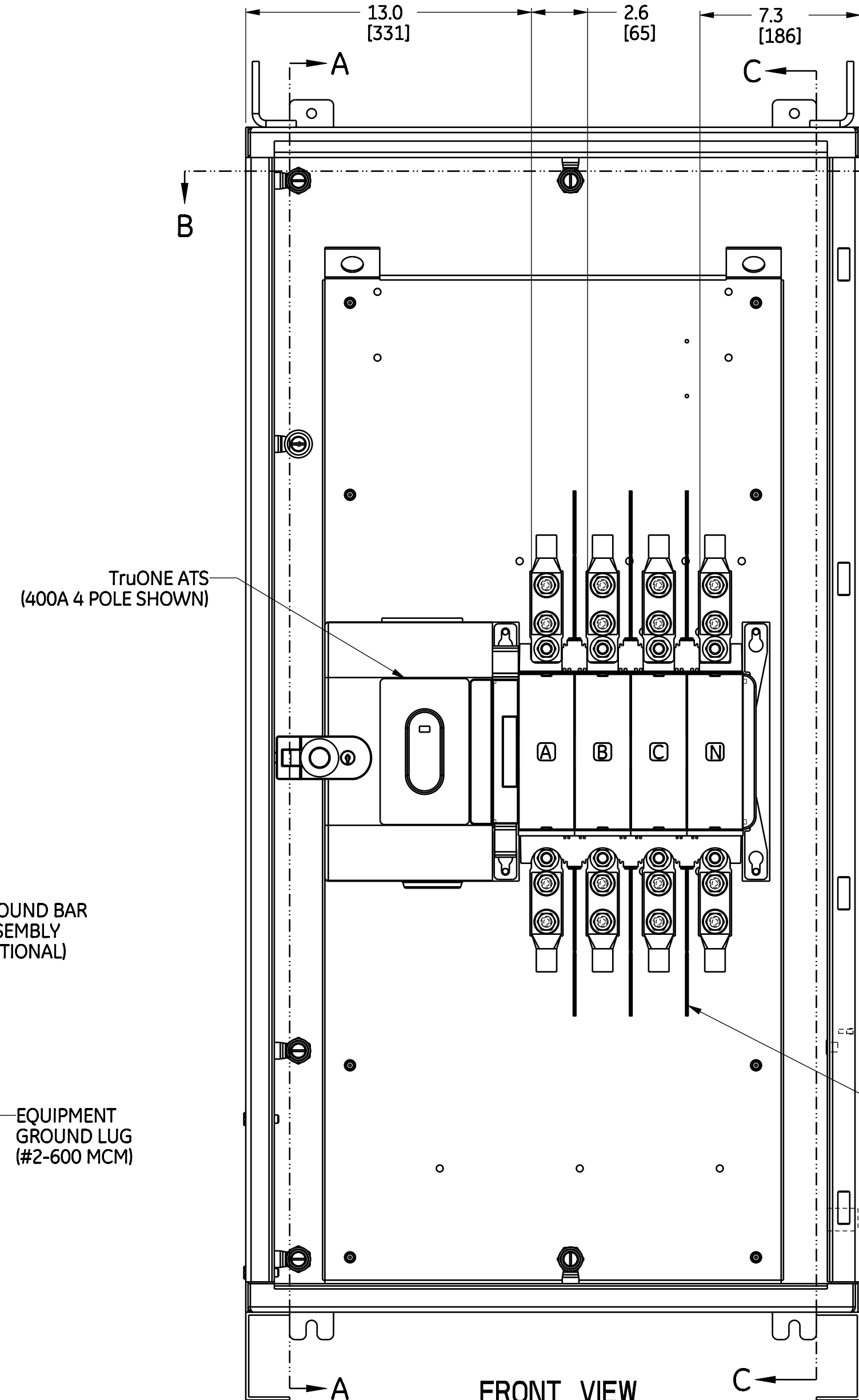
SECTION B-B
TOP VIEW
WITHOUT TOP PANEL



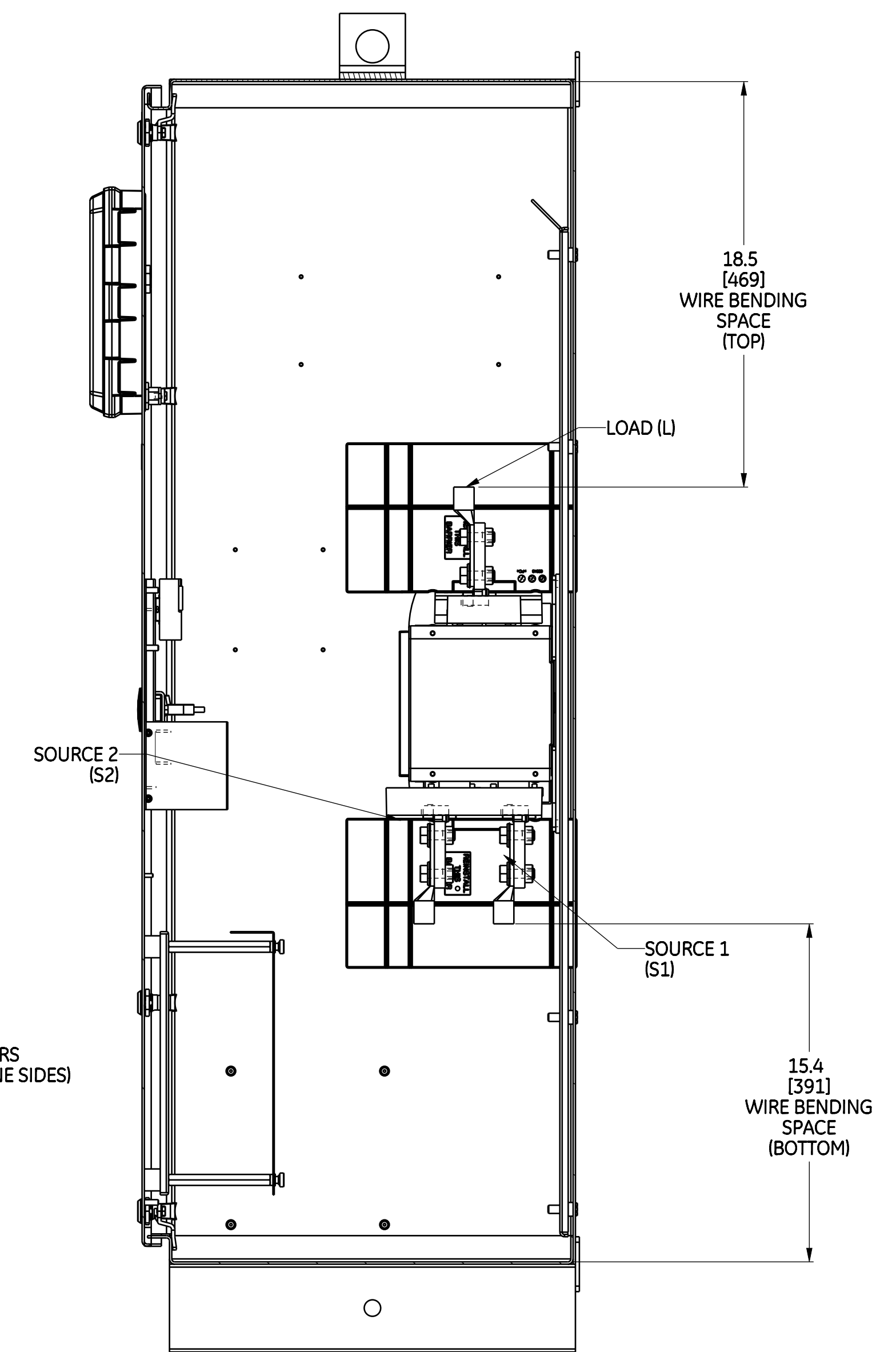
SECTION D-D
DOOR INSIDE VIEW



SECTION A-A
LEFT VIEW
WITHOUT SIDE PANEL



FRONT VIEW
WITHOUT DOOR
(4 POLE SWITCH SHOWN)



SECTION C-C
LEFT SIDE
WITHOUT SIDE PANEL
AND PHASE BARRIERS

NOTE:
FOR SINGLE PHASE SWITCHED NEUTRAL (3-POLE) UNIT, THE NEUTRAL POLE WILL BE NEXT TO MECHANISM
AND PHASE A AND PHASE B POLES WILL BE NEXT TO NEUTRAL POLE

NOTE:
1. REFER TO SHEET (1) FOR COMPLETE NOTE DETAILS
2. MECHANICAL LUGS SHOWN IN ABOVE VIEWS ARE FOR REFERENCE ONLY.

ABB PROPRIETARY AND CONFIDENTIAL INFORMATION
The information contained in this document has to be kept strictly confidential.
Any unauthorized use, reproduction, distribution or disclosure to third parties is strictly forbidden.
ABB reserves the right to change specifications without notice.
Copyright © 2024 ABB. All rights reserved.

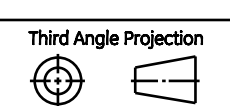


ABB		
SIZE D	NUMBER 50C-1081	REV B
SCALE 1:5	PRODUCT LINE ZENITH ZTS T-SERIES	SHEET 5 of 5