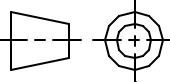


NOTES:

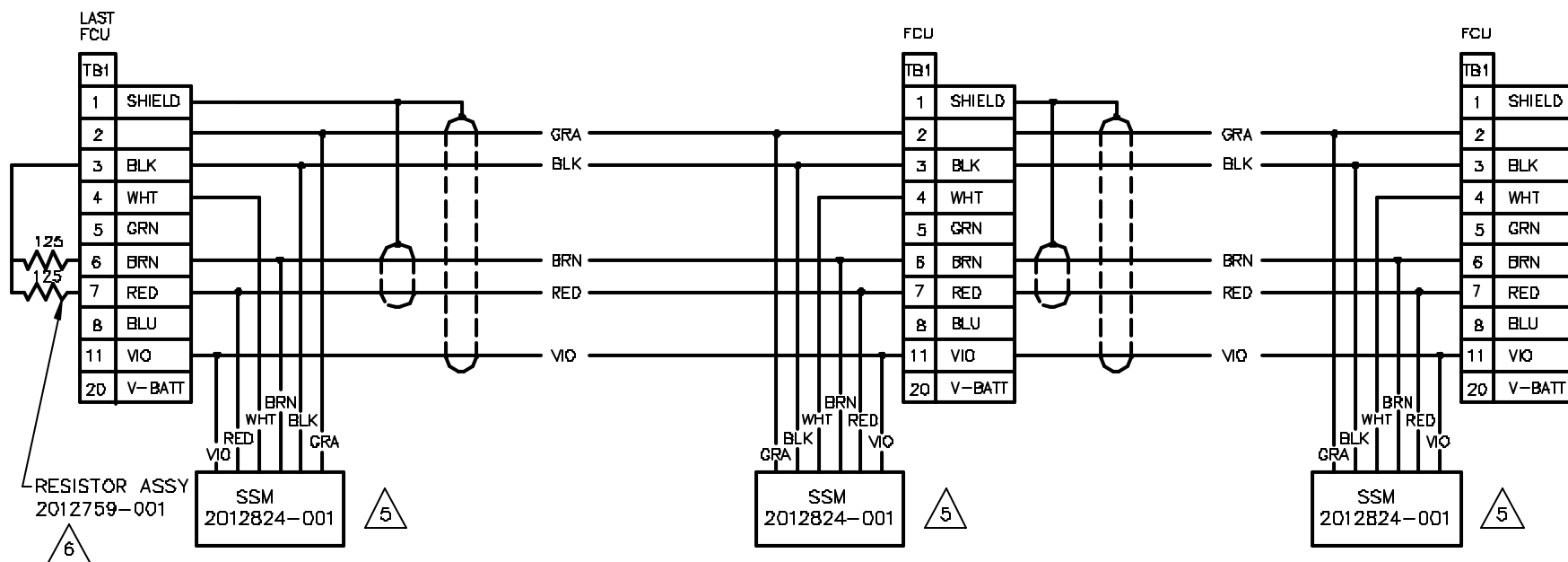
1. ALL DEVICES ARE WIRED IDENTICAL EXCEPT THE LAST DEVICE. IF ONLY ONE DEVICE IS USED THEN THE DEVICE WILL BE WIRED AS LAST DEVICE. JUMPER (1212006-702) OR RESISTOR ASSY (2012759-001) IS USED ON LAST DEVICE ONLY.
2. MAXIMUM NUMBER OF DEVICES THAT MAY BE CONNECTED IN SERIES USING RS485 COMMUNICATION IS 32.
3. TOTAL LENGTH OF RS485 CABLE NOT TO EXCEED 4000 FT.
4. DO NOT CONNECT WHT & GRA WIRES FROM SURGE SUPPRESSOR MODULE TO AIU/RTU.
5. OPERATION WITHOUT THE SURGE SUPPRESSOR MODULE REQUIRES THAT A 1.5K OHM RESISTOR BE PLACED BETWEEN TB1-2 & TB1-4 OF FCU'S, RTU'S AND AIU'S USING BOARDS 2011772-001, 2012984-003,004 OR 2012692-001,002,007,008 REQUIRE A 1.5K OHM RESISTOR IN SERIES WITH THE GRAY WIRE.
6. TERMINATION RESISTOR OR JUMPERS ON LAST UNIT ONLY. RESISTOR OR JUMPERS MUST BE USED WITH OR WITHOUT SURGE SUPPRESSOR MODULE.
7. JUMPER NOT NEEDED IF CABLE 2011648-001 IS USED. IF A LESSER QUALITY CABLE IS USED, THEN GRA WIRE MUST BE ELIMINATED AND JUMPER BETWEEN TB1-8 AND TB1-20 TO BE USED. JUMPER NOT USED WHEN USING SWITCHED POWER. DO NOT ADD THIS JUMPER WHEN WIRING AT AAI.
8. SEE 2015225-WI FOR SPECIFIC COMMUNICATIONS MODULE/CARD AND COMM PORT.

REVISIONS

REV	ACTION	DRAWN	CHECKED	APPROVED	DATE
AK	D12403	KASTNER	KASTNER	HOLLAND	01/12/10
AG	E10050	SMITH	WIDENER	HOLLAND	04-02-14
AH	D0861	GILL	WIDENER	HOLLAND	05-08-18
AI	D4982	KASTNER	KASTNER	HOLLAND	07/12/03
AJ	D5431	KASTNER	KASTNER	HOLLAND	08/05/19

ASSEMBLY/QUANTITY	ITEM NO.	PART NUMBER	DESCRIPTION/MATERIAL	REFERENCE/ZONE DESIGNATOR	UNIT MEAS						
<b>PARTS LIST</b>											
 <p>THIRD ANGLE PROJECTION</p>	<p>UNLESS OTHERWISE SPECIFIED DIMENSIONS ARE IN INCHES</p> <p>TOLERANCES ARE:</p> <table style="width: 100%; border: none;"> <tr> <td style="text-align: center;">DECIMAL</td> <td style="text-align: center;">ANGULAR</td> </tr> <tr> <td style="text-align: center;">.XX ± ---</td> <td style="text-align: center;">± ---</td> </tr> <tr> <td style="text-align: center;">.XXX ± ---</td> <td></td> </tr> </table> <p>BREAK ALL SHARP CORNERS AND EDGES</p> <p>DIMENSIONS APPLY BEFORE FINISH</p> <p>DO NOT SCALE DRAWING</p>		DECIMAL	ANGULAR	.XX ± ---	± ---	.XXX ± ---		<p>PRODUCT LINE</p> <p><b>TOTALFLOW®</b></p>	<p>DATE</p> <p>04/2/8</p>	<p><b>ABB</b> <b>TOTALFLOW Products</b></p> <p>TITLE</p> <p><b>WIRING INTERCONNECT</b></p> <p><b>FCU TO FCU/AIU (RS485), SATELLITE BUS</b></p> <p><b>WI</b></p>
			DECIMAL	ANGULAR							
			.XX ± ---	± ---							
			.XXX ± ---								
DESIGN	DATE										
DRAWN	DATE										
CHECKED	DATE										
		APPROVED	DATE	SCALE	SIZE	UNIT TYPE	DRAWING NO.	REV	SHEET		
		HOLLAND	01-5-8	NONE	B	WI	2012657	AK 1	of 8		



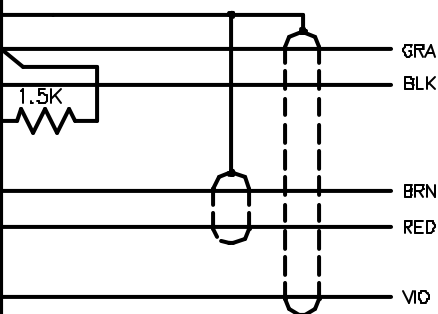


FCU W/EXP I/O (RS485) 2011690-001

SCALE	SIZE	UNIT	DRAWING NO.	REV	SHEET
NONE	B	WI	2012657	AK 3	OF

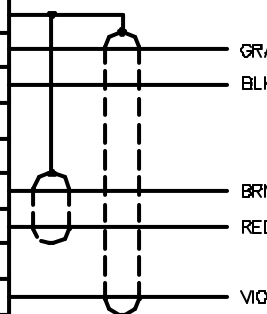
LAST  
FCU

TB1	
1	SHIELD
2	
3	BLK
4	WHT
5	GRN
6	BRN
7	RED
8	BLU
11	VIO
20	V-BATT



FCU

TB1	
1	SHIELD
2	
3	BLK
4	WHT
5	GRN
6	BRN
7	RED
8	BLU
11	VIO
20	V-BATT



FCU

TB1	
1	SHIELD
2	
3	BLK
4	WHT
5	GRN
6	BRN
7	RED
8	BLU
11	VIO
20	V-BATT

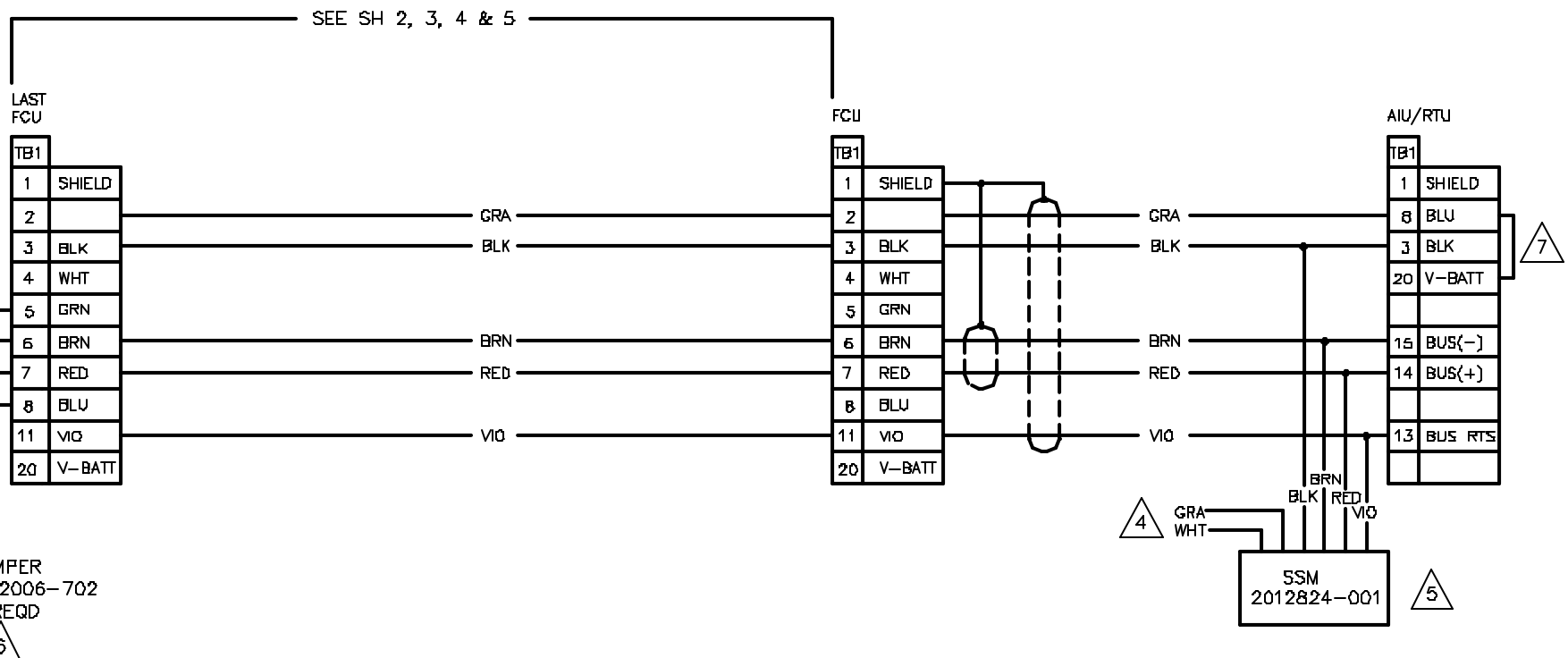


JUMPER  
1212006-702  
2 REQD



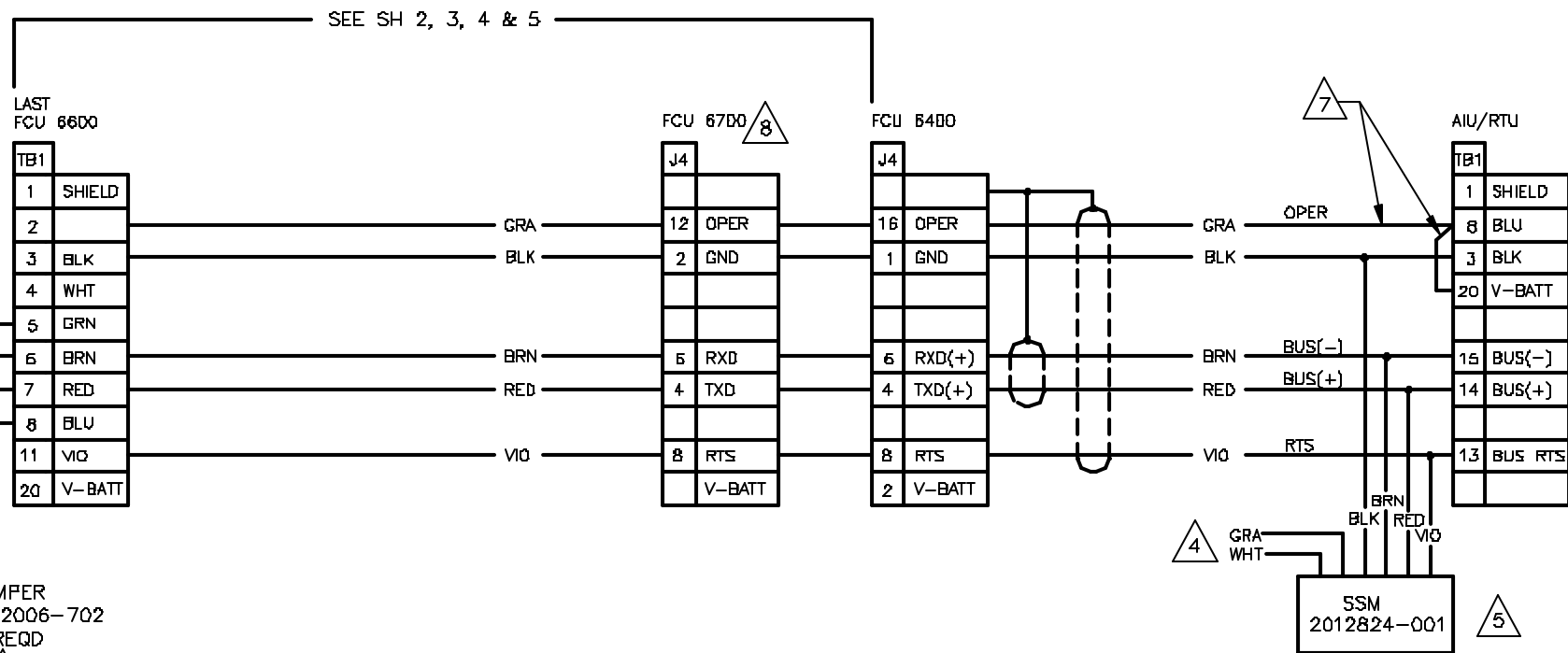
FCU W/EXP I/O (RS485) 2012901-001  
FCU W/COMM INTERFACE W/AQ-RS485 2012911-001

SCALE	SIZE	UNIT	DRAWING NO.	REV	SHEET
NONE	B	WI	2012657	AK 4	OF



AIU/RTU USED WITH FCU'S W/FCU AS LAST DEVICE

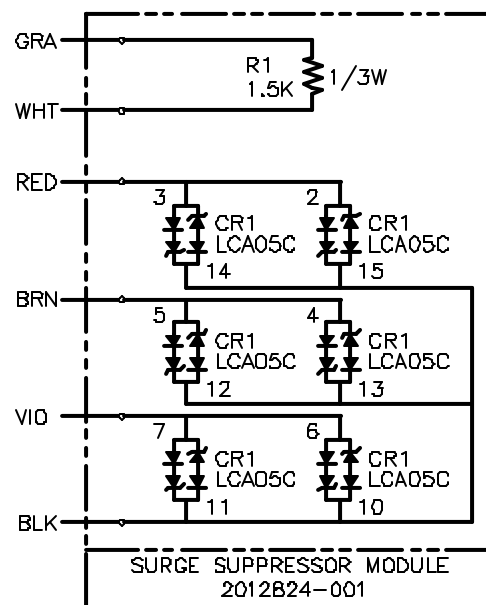
SCALE	SIZE	DATE	DRAWING NO.	REV	SHEET
NONE	B	WI	2012657	AK 5	OF



AIU/RTU USED WITH FCU'S W/FCU AS LAST DEVICE

SCALE	SIZE	DATE	DRAWING NO.	REV	SHEET
NONE	B	WI	2012657	AK 6	OF





SCALE	SIZE	UNIT	DRAWING NO.	REV	SHEET
NONE	B	WI	2012657	AK	8 OF