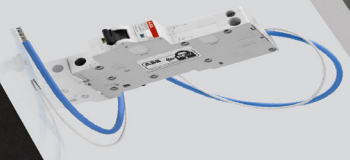




DSE201 M  
Compact design with  
enhanced protection



ABB

ABB

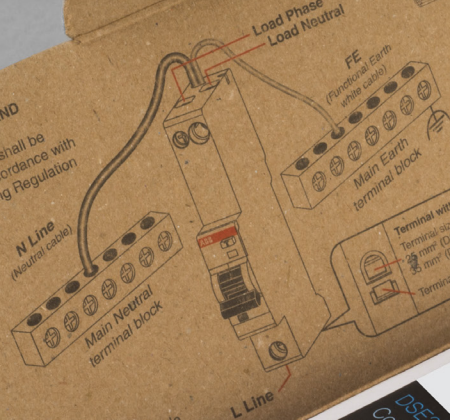
ABB

100002  
CE  
QTY 1  
AC  
10000  
1P+N  
C32  
30 mA  
1 mod



**INSTALLATION AND CONNECTION**  
DSE201 series shall be installed in accordance with National Wiring Regulation

Load cable size  
1.5, 16, 16 mm<sup>2</sup>



DSE201 series is suitable for installation in consumer units and distribution boards

**DSE201 M**  
Compact design with enhanced protection



**ABB**

**ABB**



### DSE201 M, unique solution Distinctive features

**Advanced at volume**  
Even the production of a million devices is possible in a standard configuration. This makes the DSE201 M a cost-effective solution for large quantities. It is also possible to produce a customised solution for a specific application.

**Design and terminal**  
The design of the DSE201 M is compact and easy to install. The terminal block is designed for easy connection of the cables. The terminal block is also designed for easy connection of the cables.

**Low noise**  
The DSE201 M is designed to be quiet. This is achieved by the use of high-quality components and a special design. The DSE201 M is also designed to be quiet.

### DSE201 M, unique solution Combination with auxiliary elements

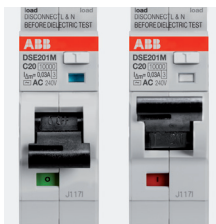
The DSE201 M can be combined with a wide range of auxiliary elements. This allows you to create a customised solution for your application. The auxiliary elements are designed to be easy to install and use.

**Legend**

- 1-1 Auxiliary element
- 1-2 Auxiliary element
- 1-3 Auxiliary element
- 1-4 Auxiliary element
- 1-5 Auxiliary element
- 1-6 Auxiliary element
- 1-7 Auxiliary element
- 1-8 Auxiliary element
- 1-9 Auxiliary element
- 1-10 Auxiliary element
- 1-11 Auxiliary element
- 1-12 Auxiliary element
- 1-13 Auxiliary element
- 1-14 Auxiliary element
- 1-15 Auxiliary element
- 1-16 Auxiliary element
- 1-17 Auxiliary element
- 1-18 Auxiliary element
- 1-19 Auxiliary element
- 1-20 Auxiliary element

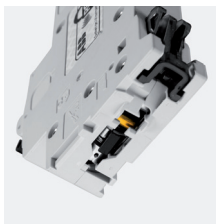
## DSE201 M, unique solution

### Distinctive features



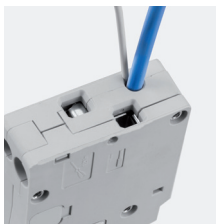
#### Device status at a glance

Earth fault indicator: blue window above the toggle to immediately detect and identify any earth fault trip, reducing downtime for maintenance. Contact position indicator (CPI): green/red window below the toggle to identify the real position of the contacts independently on the toggle position.



#### Double slot terminal

Easy to install. Fail-safe line side terminal to avoid improper connection. Two slots of different dimensions (35mm<sup>2</sup> and 10mm<sup>2</sup>) available to allow the connection both with cables and busbars.



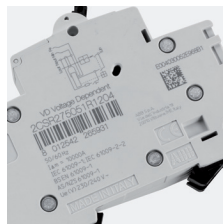
#### Load side

Load side terminal accepts cables, both rigid and flexible up to 16mm<sup>2</sup>. Flying leads are straight instead of pigtail ones to reduce the space required for wiring operations.



#### Easy and flexible

Double and bistable clips with a new design for a secure fixing in any type of consumer unit or distribution board. Easy removal from a cluster of RCBOs/MCBs supplied with Busbars.



#### Smart case

Main technical information are laser-printed on the front and left side of product to ensure long readability. On the right side, the tightening torque and the stripping length of the cable for a correct and safety installation of the unit are molded.



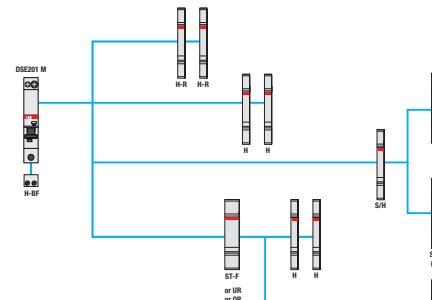
#### Anti counterfeiting

Each DSE201 is equipped with a RFID tag containing a unique serial number assigned by ABB according to ISO/IEC FCD 15693-3 standard in order to authenticate the product. Through this unique serial number, ABB can easily identify counterfeited products and verify the authenticity of each single device.

## DSE201 M, unique solution

### Combination with auxiliary elements

The new DSE201 M series is suitable for quick installation in combination with the standard auxiliary elements that can be mounted with RCDs and MCBs: auxiliary and signal contacts, shunt trip, overvoltage release, undervoltage release. The auxiliary elements can be mounted directly within the product in few steps, following the same instructions of S200 MCBs.



Legend	Description
H	Auxiliary contact
H-R	Auxiliary contact
S/H	Signal/Auxiliary contact
S/H (H)	Signal/Auxiliary contact used as auxiliary contact
ST-F	Shunt trip for RCD
UR	Undervoltage release
OR	Overvoltage release
H-BF	Auxiliary contact for bottom fitting

## DSE201 M, unique solution Distinctive features



With its breaking capacity of 10kA in only one module width and 115mm height, DSE201 M series is the perfect solution for a complete protection in commercial and industrial applications, where space optimization is particularly required. The unique earth fault indicator window identifies any earth fault trip, making easier the troubleshooting on the network and reducing the downtime for maintenance.

## Contact us

**ABB SACE**  
A division of **ABB S.p.A**  
Viale dell'Industria, 18  
20010 Vittuone (MI)  
Tel.: +39 02 9034 1  
Fax: +39 02 9034 7609

[www.abb.com](http://www.abb.com)

The data and illustrations are not binding. We reserve the right to modify the contents of this document on the basis of technical development of the products, without prior notice.

Copyright 2016 ABB. All rights reserved.

9AKK106930A3217 - 11/2016



**DSE201 M**  
Compact design with  
enhanced protection

**ABB**

**ABB**