

Limit Switches

Trustworthy detection devices

Using limit switches is the easiest way to convert mechanical movements in to electrical signals. They combine different types of actuators, casings and contacts and are perfectly suited to a large variety of applications, whatever the environment.



Reliable in extreme conditions



Continuous operation



Global availability

Ready for anything

Limit switches are designed to operate in the most difficult environments. A high degree of protection up to IP66 and the positive contact opening, guarantees reliable operation.

Keep your installation running 24h a day

Limit switches secures your uptime. Their high mechanical durability can handle up to 10 million operations with contacts that are mechanically linked to actuators.

Wherever you are

Easy product selection from our core offering that covers most applications. Thanks to global certification, our products can be used everywhere to ensure your peace of mind.

Main applications

Sustainability of detection for a wide variety of applications

Material handling equipment (cranes, ramps, elevators...)

Escalators, parking barriers and automatic doors

Machine tools and manufacturing lines.



Power and productivity
for a better world™





A simple core range selection covering 80% of the applications...

11 12 13 41 51 91

Width 30 mm

Plastic casing - Double insulation □ - IP65

Head type	Cable inlet	Type	Order code
	Iso 16	LS32P11B11	1SBV01031R1211
	Iso 20	LS33P11B11	1SBV01221R1211
	1/2" NPT	LS35P11B11	1SBV01211R1211
	Iso 16	LS32P13B11	1SBV01031R1211
	Iso 20	LS33P13B11	1SBV01221R1211
	Iso 16	LS32P41B11	1SBV01034R1211
	Iso 20	LS33P41B11	1SBV01224R1211
	Iso 16	LS32P51B11	1SBV01035R1211
	Iso 20	LS33P51B11	1SBV01225R1211
	Iso 16	LS32P91B11	1SBV01039R1211
	Iso 20	LS33P91B11	1SBV01229R1211
	1/2" NPT	LS35P91B11	1SBV01219R1211

Metal casing - IP66

Head type	Cable inlet	Type	Order code
	Iso 16	LS32M11B11	1SBV01191R1211
	Iso 20	LS33M11B11	1SBV01381R1211
	1/2" NPT	LS35M11B11	1SBV01371R1211
	Iso 16	LS32M12B11	1SBV01191R1211
	Iso 20	LS33M12B11	1SBV01381R1211
	Iso 16	LS32M41B11	1SBV01194R1211
	Iso 20	LS33M41B11	1SBV01384R1211
	Iso 16	LS32M51B11	1SBV01195R1211
	Iso 20	LS33M51B11	1SBV01385R1211
	Iso 16	LS32M91B11	1SBV01199R1211
	Iso 20	LS33M91B11	1SBV01389R1211
	1/2" NPT	LS35M91B11	1SBV01379R1211

Width 40 mm

Plastic casing - Double insulation □ - IP65

Head type	Cable inlet	Type	Order code
	Iso 20	LS43P11B11	1SBV01071R1211
	1/2" NPT	LS45P11B11	1SBV01241R1211
	Iso 20	LS43P13B11	1SBV01071R1211
	1/2" NPT	LS45P13B11	1SBV01241R1211
	Iso 20	LS43P41B11	1SBV01074R1211
	1/2" NPT	LS45P41B11	1SBV01244R1211
	Iso 20	LS43P51B11	1SBV01075R1211
	1/2" NPT	LS45P51B11	1SBV01245R1211
	Iso 20	LS43P91B11	1SBV01079R1211
	1/2" NPT	LS45P91B11	1SBV01249R1211

Metal casing - IP66

Head type	Cable inlet	Type	Order code
	Iso 20	LS43M11B11	1SBV01161R1211
	1/2" NPT	LS45M11B11	1SBV01311R1211
	Iso 20	LS43M13B11	1SBV01161R1211
	1/2" NPT	LS45M13B11	1SBV01311R1211
	Iso 20	LS43M41B11	1SBV01164R1211
	1/2" NPT	LS45M41B11	1SBV01314R1211
	Iso 20	LS43M51B11	1SBV01165R1211
	1/2" NPT	LS45M51B11	1SBV01315R1211
	Iso 20	LS43M91B11	1SBV01169R1211
	1/2" NPT	LS45M91B11	1SBV01319R1211

Cable inlet:

ISO 16 (standard version) equivalent to Pg11 – Cable diameter: 4.5 mm ... 10 mm (according to cable gland manufacturer)

ISO 20 (standard version) equivalent to Pg13.5 – Cable diameter: 7 mm ... 14 mm (according to cable gland manufacturer)

Technical data

	Plastic casing	Metal casing
Rated operational characteristics	AC-15: Ue = 400 V, Ie = 4 A ; A600 DC-13: Ue = 250 V, Ie = 0,27 A ; Q600	AC-15: Ue = 400 V, Ie = 4 A ; A300 DC-13: Ue = 250 V, Ie = 0,27 A ; Q300
Casing material	UL-V0 thermoplastic	30 mm casing: zinc alloy / 40 mm casing: aluminum alloy
Contact types	1 N.O. + 1 N.C., snap action	
I _{th} conventional enclosed thermal current	10 A	
Screw terminals with cable clamp	M3.5 - Screwdriver type: Pozidriv 2	

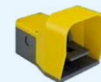
Additional versions



60 mm casing width and several heads



Pre-wired limit switches
Compact 30 mm casing width



Foot switches



Dimension drawings



<http://new.abb.com/low-voltage/products/limit-switches>