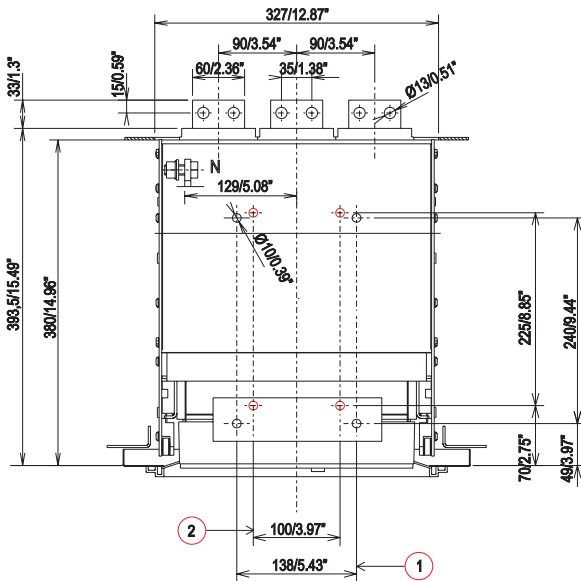
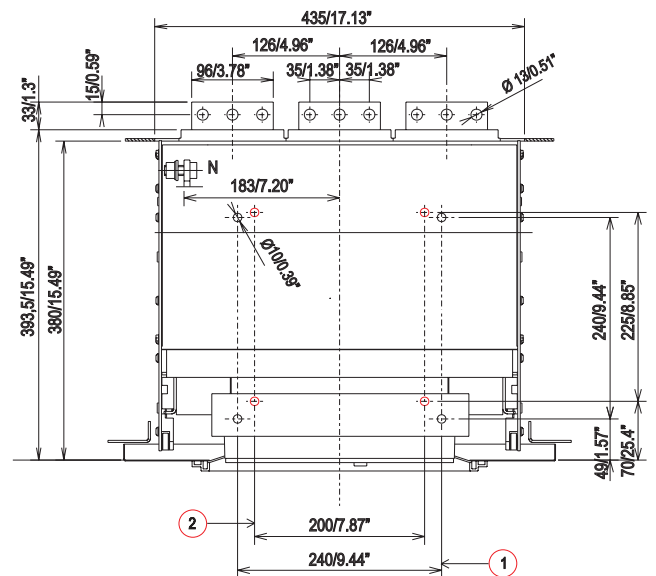


Annex per foratura parte fissa interruttore estraibile E1-E2-E3
Appendix on drilling fixed part of E1-E2-E3 withdrawable circuit-breaker
Anhang für Bohrung des festen Teils des ausfahrbaren Leistungsschalters E1-E2-E3
Annexe pour perçage partie fixe disjoncteur débricable sur chariot E1-E2-E3
Accessorio para taladrar la parte fija de interruptores extraíbles E1-E2-E3

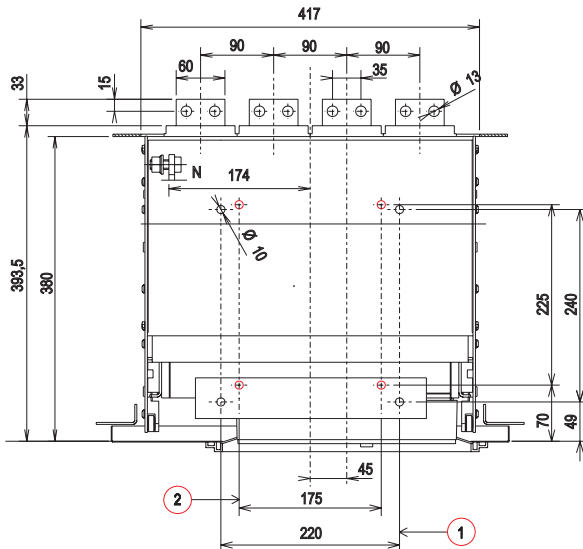
E1-E2 III IEC UL



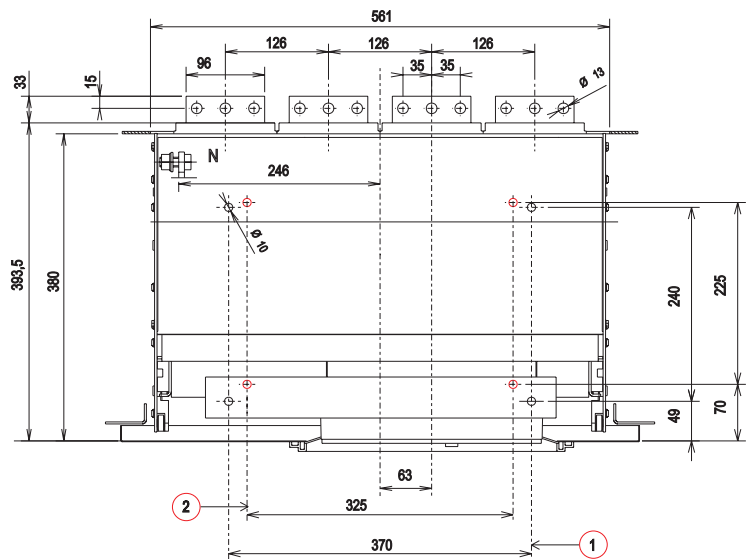
E3 III IEC UL



E1-E2 IV IEC



E3 IV IEC



- 1) N. 4 Fori fissaggio parte fissa (standard)
 2) N. 4 Fori fissaggio parte fissa (foratura alternativa passo 25 mm)

- 1) 4 x Mounting holes for fixed part (standard)
 2) 4 x Mounting holes for fixed part (alternative with 25 mm spacing)

- 1) 4 Bohrungen für Befestigung des festen Teils (Standard)
 2) 4 Bohrungen für Befestigung des festen Teils (alternative Bohrung Teilung 25 mm)

- 1) 4 Trous fixation partie fixe (standard)
 2) 4 Trous fixation partie fixe (perçage alternatif pas 25 mm)

- 1) 4 agujeros de fijación parte fija (estándar)
 2) 4 agujeros de fijación parte fija (perforación alternativa paso 25 mm)

A