
 TECHNICAL DATA SHEET

PMACLIP - BFH-0 - System support

One-piece, with safety lid

PMA


Applications:

- In machine building and installation applications

Features & Benefits:

- One-piece construction
- Very high impact resistance
- Optimal axial strain relief due to integrated rib
- Suitable for overhead installations due to safety lid
- High retention forces
- Quick mounting due to single hole fixing
- Very good chemical properties
- Fits both conduit profiles - fine (T) and coarse (G)
- Fits to PMACLIP - BFHS - Rail for system support

Materials:

- High-grade, specially formulated polyamide 6

Compatible with:

- PMAFLEX Pro Conduits
- PMAFLEX Multilayer Conduits
- PMAFLEX Conduits
- PMA Smart Line Conduits

Weathering resistance:

- Very good UV resistance and weathering characteristics, particularly in black

Colour:

- Black

Chemical properties:

- Please refer to www.pma.ch (Technical Information / Chemical Resistance)

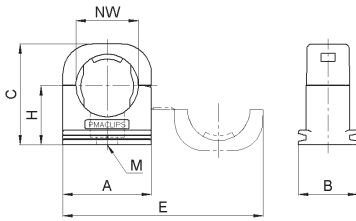
Environmental properties:

- Free from halogens and cadmium
- RoHS and REACH compliant

Product selection:

| Part no. | | Conduit size | | Dimensions in mm (nom.) | | | | | Weight | Packing unit |
|----------|----------|--------------|------|-------------------------|-------|------|------|------|------------|--------------|
| black | grey | NW | H | M | E | A | B | C | kg/100 pcs | pcs/PU |
| BFH-07-0 | SFH-07-0 | 7 | 13.5 | M4 | 40.5 | 17.0 | 20.0 | 21.5 | 0.3 | 100 |
| BFH-10-0 | SFH-10-0 | 10 | 15.5 | M5 | 47.5 | 20.5 | 20.0 | 24.5 | 0.3 | 100 |
| BFH-12-0 | SFH-12-0 | 12 | 16.5 | M5 | 54.5 | 24.0 | 20.0 | 27.0 | 0.4 | 100 |
| BFH-17-0 | SFH-17-0 | 17 | 20.0 | M6 | 68.0 | 30.0 | 20.0 | 34.0 | 0.6 | 100 |
| BFH-23-0 | SFH-23-0 | 23 | 24.0 | M6 | 85.0 | 38.5 | 20.0 | 42.0 | 0.9 | 100 |
| BFH-29-0 | SFH-29-0 | 29 | 27.0 | M6 | 99.0 | 45.5 | 20.0 | 48.0 | 1.1 | 100 |
| BFH-36-0 | SFH-36-0 | 36 | 31.0 | M6 | 119.0 | 55.5 | 20.0 | 56.0 | 1.5 | 50 |
| BFH-48-0 | SFH-48-0 | 48 | 37.0 | M6 | 143.0 | 67.5 | 20.0 | 68.0 | 1.9 | 20 |

Our customer service dept. or local distribution partner will be pleased to help you concerning product availability and lead time



| Mechanical Properties: | Value: | Test parameters: | Test method: |
|------------------------|---------------|------------------|-----------------|
| Impact strength | class 3, > 2J | (-45°C) | EN IEC 61386-25 |

| Thermal properties: | Value: | Test parameters: | Test method: |
|------------------------------------|----------------|------------------|------------------|
| Continuous application temperature | -45 ... +105°C | | EN IEC 61386-25 |
| Upper application temperature | +120°C | (20'000 h) | PMA DO 9.21-4360 |
| Short-term | +160°C | (168 h) | PMA DO 9.21-4360 |

| Fire safety properties: | Value: | Test parameters: | Test method: |
|-------------------------|-----------------------|------------------|-----------------|
| Fire performance | non flame-propagating | | EN IEC 61386-25 |

Content of delivery:

- System support

Assembly instructions:

- Please consider the appropriate assembly instructions on www.pma.ch

ABB Switzerland Ltd,
PMA Cable Protection
Aathalstrasse 90
8610 Uster, Switzerland
Phone: +41 58 585 00 11
pma-info@ch.abb.com
www.pma.ch

Let's write the future.
Together. **abb.com**

We reserve the right to make technical changes or modify the contents of this document without prior notice. With regard to purchase orders, the agreed particulars shall prevail. ABB Installation Products Inc. does not accept any responsibility whatsoever for potential errors or possible lack of information in this document.

We reserve all rights in this document and in the subject matter and illustrations contained therein. Any reproduction, disclosure to third parties or utilization of its contents – in whole or in parts – is forbidden without prior written consent of ABB Inc. Copyright© 2019 ABB Installation Products Inc. All rights reserved

