
Drive Application Builder

Frequently Asked Questions

Revision A

INTRODUCTION

Drive Application Builder is a new tool for IEC 61131-3 programming of ACS880 / DCS880 / DCT880 drives. It offers best possible user experience and support for engineers willing to combine their application expertise with high performance ABB drive technology.

Drive Application Builder has the same functionality for the drive programming as Automation Builder 2.1 and it can be installed in parallel with Automation Builder in the same workstation (PC). Automation Builder 2.0- 2.1 project archives can be ported to Drives Application Builder seamlessly.

Starting from version 2.2.0 Automation Builder discontinues as a tool for the IEC 61131-3 programming of the drives. However drive management (Drive Manager) and system testing (Virtual drives) support under the AC500 PLCs continues in Automation Builder tool.

See more details in following FAQ and official product web page. Please look also the on-line help and documentation inside the tool.

<https://new.abb.com/drives/software-tools/drive-application-programming>

Our support persons can be contacted as well by email drivesupport@abb.com

Question and Answer

1 What will change?

Drive IEC programming tool will be available as a separate standalone tool. This new software tool is named to Drive Application Builder – abbreviated to DAB and Automation Builder as AB.

- DAB is the dedicated and optimized software tool for ACS880 and DCS/DCT880 IEC (CODESYS) application development.
- Automation Builder will continue to have PLC related functionality and will include Drive Manager and Virtual system testing functionality for drives, Drive library (PS553-DRIVES) and Drive composer pro as integral parts of the software.

The general idea is that everything that is required to get an ABB Drive, that is connected as a field device to the AC500 up and running, remains in Automation Builder (AB).

2 Can I continue using Automation Builder for drives IEC programming?

You can continue using Automation Builder for drives IEC programming by using previous version profiles (2.1 and earlier). These version profiles will also be available in future Automation Builder versions. However, the recommendation is to start using DAB as the maintenance of the previous version profiles in Automation Builder is limited to serious bug fixes. New features will only be implemented to DAB in the future.

3 What are the benefits of Drive application builder software?

Drive Application Builder is fit for the purpose tool for drive IEC programming. It is fast to install and upgrade. As the scope of the tool is more focused, it's making the use of the tool more straightforward.

There will be in the future more functionalities and features for customizing and programming the drives.

4 When DAB will be available and to whom?

DAB will be released by the beginning of July 2019 and freely downloadable from the web. Free 30-day trial license will be available.

5 Can AB and DAB be installed in the same workstation?

Side by side installation of the tools is possible on the same workstations. Tested with windows 7 and Windows 10 operating systems.

6 What is the pricing concept?

There is a free 30 days trial license. Permanent standard and premium license of DAB shall have a price and licenses shall be order as normal drive products. However for ABB employee there is self-service link to get free one year licenses. Customers who have been using Automation Builder 2.1 or earlier version and ACS880/DCx880 drives with N8010 license ABB will get 2 year free DAB Standard License.

7 Are virtual drives and virtual commissioning supported by Drive Application Builder?

Both AB and DAB shall support virtual drives. However separate Virtual Drive installer and license are required. (DAB with Premium license will include also the Virtual drive licenses)

8 How are the license keys activated?

DAB installer includes new ABB Drives License Manager tool to activate license keys on the workstation. License is requested automatically at first launch of DAB. Only PC bind licenses are available. Don't use ABB License Manager for activating the license keys of DAB.

9 Is it possible to install DAB to workstations which are having 3rd partly CODESYS based tool?

ABB is not guaranteeing in the compatibilities between own tools and 3rd party CODESYS tools. However there has not been know issues with such installation set-ups.

10 Is it possible to import existing AB drive projects to DAB?

Yes, it's possible to import projects and project archives made with AB version profiles 2.0 and 2.1. Earlier projects have to be updated first to AB 2.0 or 2.1 and then imported to DAB. The reimport from DAB back to AB 2.1 is not supported.

However in case of the problems to import project archives it always possible to do POU level copy / paste code import.

11 What are the differences between AB and DAB on the programming point view?

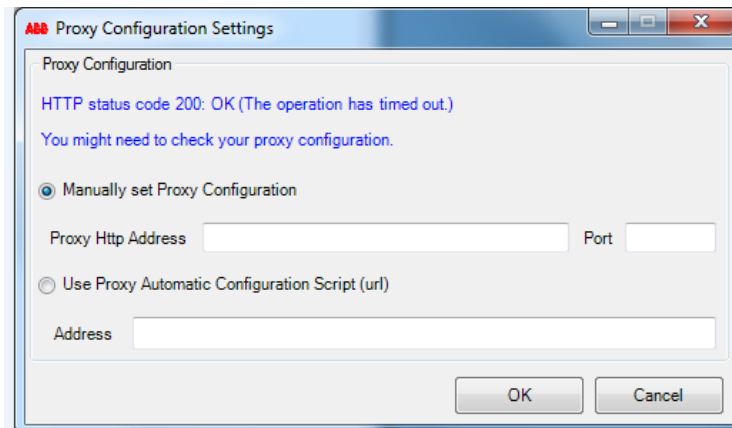
There is no major difference between AB 2.1 and DAB 1.0. See separate presentation in <https://new.abb.com/drives/software-tools/drive-application-programming>

12 Who is supporting DAB?

The Global Drives support will give support for Drive application builder and Drive programming in general (drivessupport@abb.com).

13 Sometimes license activation fails because of the local proxy settings

There has been problems to activate license key and PC has reported following kind of error.



Please check with your local IT that ABB Drives License Manager.exe has not blocked to contact external network server. As remedy you can use offline license activation or a different internet connection.