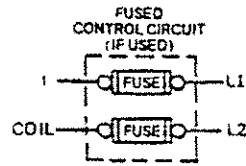
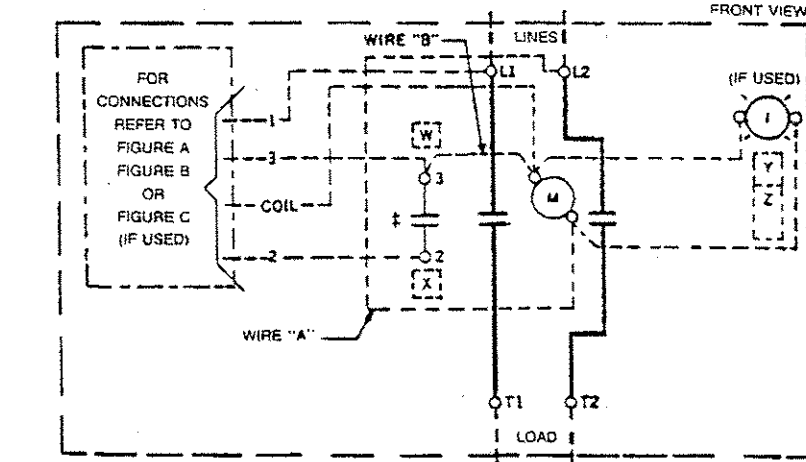
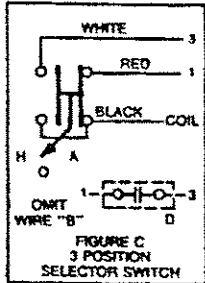
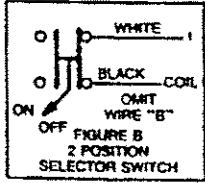
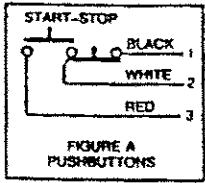


GEJ-6573 Information Label

# CR360L Lighting Contactor

30 Ampere-Single-phase



The following accessory kits may be installed on this device.

- |                      |                        |
|----------------------|------------------------|
| START-STOP PV        | CR305X120N             |
| OFF-ON PB            | CR305X120P             |
| OFF-ON Sel Sw        | CR305X130P             |
| H-O-A Sel Sw         | CR305X130N             |
| IND LIGHT            | CR305X150N             |
| AUX CONTACT          | CR305X100A, B, C, D, E |
| CONTROL CIRCUIT FUSE | CR305X141A, B, C, D    |
| For CSA-GND KIT      |                        |
| 1/2-IN CONDUIT       | 55-213403G001          |
| 3/4-IN CONDUIT       | 55-213403G002          |

M-LINE CONTACTOR

I-INDICATING LIGHT

D-MAINTAINING CONTACT PILOT DEVICE

Use 75°C copper conductors only, for field wiring. Torque line and load terminals to 20 lb-in.

FOR SEPARATE CONTROL-Omit wire "A" and connect control source to coil and to 1 on control device.

NOTE: Refer to the National Electrical Code. Additional control circuit overcurrent protection may be required.

COIL (Order 15D21G plus coil suffix number per table below)

60 Hz	115-120V	200-208V	230-240V	—	460-480V	575-600V
50 Hz	110V	—	220V	380V	440V	550V
Coil Suffix	002	023	003	064	004	005

**EXTRA AUXILIARY CONTACTS**

Final Suffix Letter Of CR Number	Contact Location, See Diagram			
	W	X	†Y	†Z
A (Or None)				
B				
C		≠		
D		≠		
E				
F	≠	≠		
G		≠		
H	≠	≠		
J				
†Z	No Holding Interlock			

† Not available when Control Circuit Fuse Kit is used.

**PRINCIPAL RENEWAL PARTS**

4 Movable & 6 Sta Cont. . . . . 546A301G002

