

Data Management Software

AutoChart



Quick Reference Guide

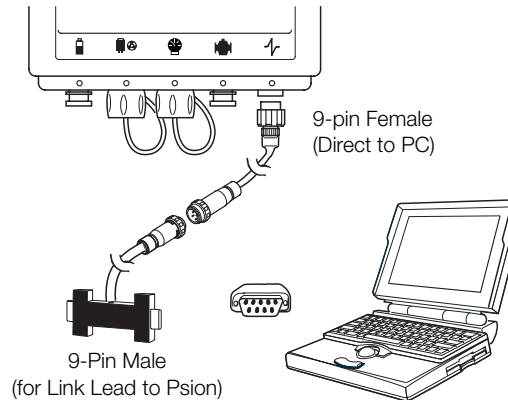
IM/ACT/Q-EN Issue 1



1 Preparation

Before creating an AutoChart connection:

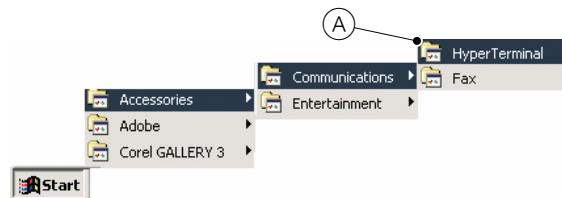
1. Install the sensor as detailed in the Installation Manual (IM/AM or IM/AM/E).
2. Connect your PC to the transmitter (an RS232 to USB converter is required for USB connections).



2 Open HyperTerminal

To open the HyperTerminal application:

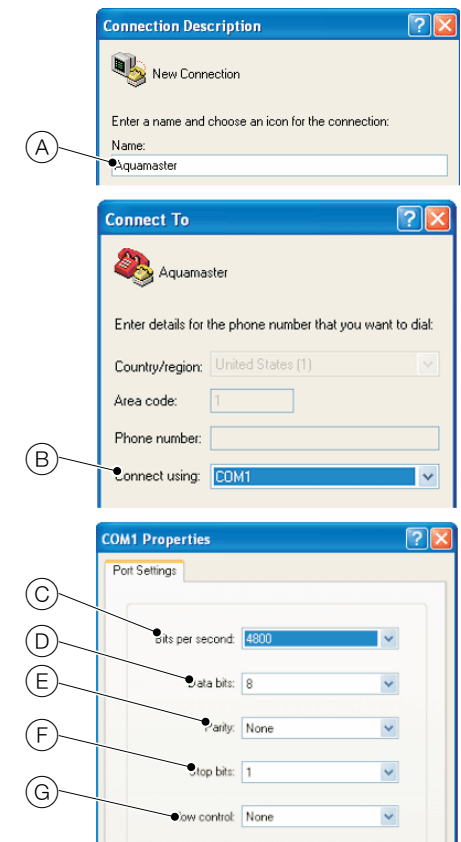
1. From the 'Start' menu select 'HyperTerminal' (A).



3 Create a HyperTerminal Connection

To create a HyperTerminal connection:

1. Enter a name for the connection (A) and click 'OK'.
2. Select a communications port (B) and click 'OK'.
3. Enter the flow control modem (RTS/CTS) settings:
 - Bits per second = 4800 (C)
 - Data bit = 8 (D)
 - Parity = None (E)
 - Stop bits = 1 (F)
 - Flow control = None (G)



4. Click 'OK'.

4 Set/Check Parameters

To enable changes to the 'Setup' menu parameters, parameter 248 must be changed to level 4 security access (set to 'am2k').

Key: R = Read Only
4 = Level and Security

1. Refer to the following tables to set/check parameters.

11.0 Logger		
405	Totalizer Logging hour	:

*Present only in V2.40 and above.

Check/Set Parameter		
33	Site Name**	:
151	7	:
164	1	:
165	1	:
253	Time	:
254	Date	:
319	Power Supply Type	
	0 Battery	:
	1 Mains	:
	2 Explorer	:
290	0	:
334	0 ***	:
335	0 ***	:
371	1	:
401	0	:
406	1	:

** This must be a unique ID, a minimum of 5 characters and not be left as '- '.

*** If not zero, reset to 0.



ABB Limited
Oldends Lane, Stonehouse
Gloucestershire
GL10 3TA
UK
Tel:+44 (0)1453 826661
Fax:+44 (0)1453 829671

The Company's policy is one of continuous product improvement and the right is reserved to modify the information contained herein without notice.

Printed in UK (11.09)

ABB Inc.
125 E. County Line Road
Warminster
PA 18974
USA
Tel:+1 215 674 6000
Fax:+1 215 674 7183

IM/ACT/Q-EN Issue 1

AutoChart Support
email: supportABBautochart@gb.abb.com

12.0 GSM Comms Settings		
368	GSM Module Status	:
367	SIM Access Lock	:(Lock disabled)
357	SIM ID Number	:
355	SIM Password	:(If required, 4-digit)
366	Network	:
365	Signal Log (new -> old)	:(>5)
349	Total Connect Time	:
354	Signal Test Wait Time(s)	:
358	Manual GSM Session	:

Periodic Wakeup Settings:		
351	WakeUp Base Time	:
347	WakeUp Base Day	:
353	WakeUp Schedule	:
352	WakeUp Duration	:(5)
	Exit	:

13.0 SMS Services***		
362	Auto Report Phone No. 1	:(Server No.) +447788898171
382	Auto Report Phone No. 2	:(User No.)
391	Auto Report Phone No. 3	:(Defined Person for Alarms No.)

Flow/Pressure Log :		
395	Destination 1	:(Server No.) +447788898171
388	Flow Report Schedule	:
385	Flow Report Units	:
389	Pressure Report Schedule	:
386	Pressure Report Units	:

Totalizer Auto-Reports:		
400	Destination 1	:(Server No.)
399	Totalizer Report Schedule	:

Alarm Auto-Reports:		
401	Destination 3	:(Defined Person for Alarms No.)
402	Alarm Reports Enabled	:
	Exit	:

*** Log and Alarm reports cannot be sent unless the transmitter has been supplied from the factory with the SMS logging option enabled (parameter 406=1).

5 Download Data

To download data:

1. On your PC, open your Internet browser and connect to:
www.abbautochart.net
2. Select a language from the drop-down menu (top right) and login as instructed.
3. For first time users, click the 'New User' tab and enter your email address.
You will receive an email containing a secure link to ABB Autochart.
4. Click the secure link.
You are redirected to ABB Autochart and asked to choose your password.
5. Enter a password of your choice.
6. Click the 'Login' tab and enter your email address and password to login to ABB Autochart.
7. Click the 'Chart' tab.
8. Select the name of your meter.
9. Data is displayed in the main window.

