

When Electric Testing is required, use all 3 terminals on each contact together. Do not apply to any other contacts. High voltage terminals: 100V-250V AC, 100-500V DC.

19 AUX. 11 "A"	20 AUX. 11 "B"	21 AUX. 11 COM	22 AUX. 9 "A"	23 AUX. 9 "B"	24 AUX. 9 COM	25 AUX. 7 "A"	26 AUX. 7 "B"	27 AUX. 7 COM	28 AUX. 5 "A"	29 AUX. 5 "B"	30 AUX. 5 COM	31 AUX. 3 "A"	32 AUX. 3 "B"	33 AUX. 3 COM	34 AUX. 1 "A"	35 AUX. 1 "B"	36 AUX. 1 COM
AUX. 12 "A"	AUX. 12 "B"	AUX. 12 COM	AUX. 10 "A"	AUX. 10 "B"	AUX. 10 COM	AUX. 8 "A"	AUX. 8 "B"	AUX. 6 "A"	AUX. 6 "B"	AUX. 4 "A"	AUX. 4 "B"	AUX. 2 "A"	AUX. 2 "B"	AUX. 2 COM			

FAR* ROW
NEAR* ROW
LEFT SIDE
TERMINAL BLOCK LABEL
BLOCK "A"

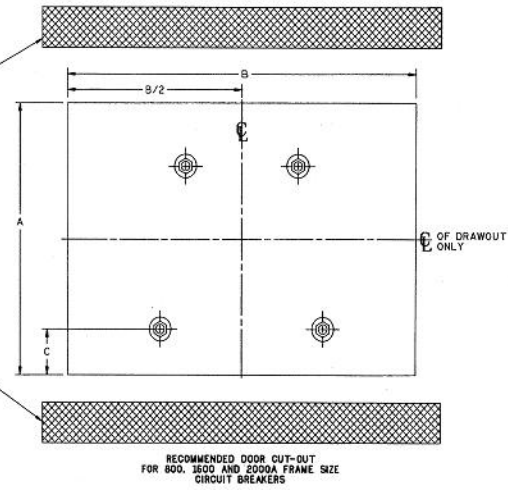
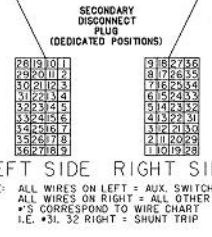
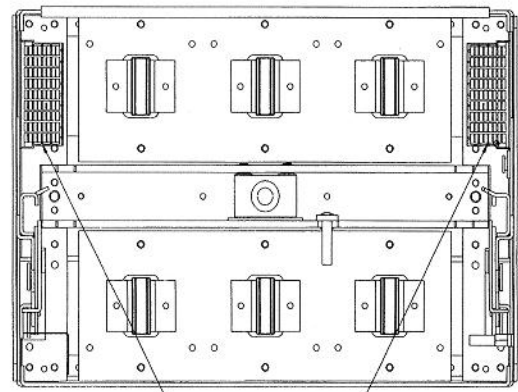
WRITE ON SPACES FOR SWITCH CIRCUIT IDENTIFICATION

INTERNAL WIRE HARNESS COLOR CODES:	
R=RED	P=PURPLE
W=WHITE	G=GREEN
Y=YELLOW	B=BLACK
N=BROWN	L=BLUE

18 ELECT. OPER. +	36 ELECT. OPER. -
7 RMT. CHG. W	35 RMT. CHG. L
16 RMT. CLS. +	34 RMT. CLS. -
15 B.A. ONLY COW	33 CHG. IND. G
14 B.A. ONLY N.O.	32 SHUNT TRIP B
13 B.A. ONLY N.C.	31 SHUNT TRIP B
2 BA LOCKOUT COW	30 U.V.R. L
1 BA LOCKOUT N.O.	29 U.V.R. L
10 BA LOCKOUT N.C.	28
9	27
8	26 ZSI INPUT - W
7 COMNET - G	25 ZSI INPUT + G
6 COMNET + Y	24 ZSI OUTPUT - W
5 C Ø VOLTS R	23 ZSI OUTPUT + R
4 B Ø VOLTS W	22 D/O SWITCH W
3 A Ø VOLTS L	21 D/O SWITCH L
2 24VOLTS DC - B	20 A H TAP B
1 24VOLTS DC + R	19 B H COM W

NEAR* ROW
FAR* ROW
RIGHT SIDE
TERMINAL BLOCK LABEL
BLOCK "B"

WIRE CHART
NOTE: WIRE RANGE #18 THRU #12 SOLID OR STRANDED COPPER WIRE. TORQUE: 5LB-IN.



FRAME RATING	BREAKER TYPE	BREAKER WEIGHT	DRAWOUT SUBSTRUCTURE	MINIMUM COMPARTMENT VOLUME	MINIMUM DOOR VENTILATION	STANDARD DOOR CUT-OUT			OPTIONAL DOOR CUT-OUT		
						A	B	C	A	B	C
800A	STATIONARY MOUNTED	71 LBS* [32.3KG]	N/A	3447 CU.IN. [56486CU.CM]	NONE	10 [254]	14 [356]	1.69 [42.9]	9.83 [249.7]	13.38 [339.9]	1.605 [40.8]
1600A		79 LBS* [35.9KG]				TRIM PLATE REQUIRED	FLUSH FRONT OR NON-HINGED DOOR CONSTRUCTION- TRIM PLATE MAY BE OMITTED				
2000A		125 LBS* [56.8KG]				TRIM PLATE REQUIRED	FLUSH FRONT OR NON-HINGED DOOR CONSTRUCTION- TRIM PLATE MAY BE OMITTED				
800A	DRAWOUT MOUNTED	96 LBS* [48.2KG]	34 LBS [24.5KG]	3780 CU.IN. [61943CU.CM]	NONE	10 [254]	14 [356]	N/A	9.83 [249.7]	13.38 [339.9]	N/A
1600A		125 LBS* [56.8KG]	68 LBS [30.9KG]	5670 CU.IN. [92915CU.CM]	NONE	TRIM PLATE REQUIRED	FLUSH FRONT OR NON-HINGED DOOR CONSTRUCTION- TRIM PLATE MAY BE OMITTED				
2000A											

N/A = NOT APPLICABLE
* ADD 9 LBS [4.1KG] FOR ELECTRICAL OPERATOR

TABLE 1

- NOTES:
- SEE OUTLINE DRAWING I0054370SH5.
 - BUSBARS OR CABLES SHOULD BE SIZED PER UL891 DEAD-FRONT SWITCHBOARDS STANDARD.
 - DIMENSIONS IN BRACKETS ARE [METRIC].

Industrial Solutions

by **ABB**

POWER BREAK II

CIRCUIT BREAKER WEIGHTS & VENTS INFO

THIRD ANGLE	SHEET#	DWG. NO.	DATE	REV
	5 of 19	GEM3025	09/19	02