

Type KOR-11

Outdoor current transformer

Product features

- 15 kV outdoor, 110 kV BIL
- 60 Hertz
- Primary amperes: 5 - 1200
- Electrical clearances:
 - Strike: 10.75" (273 mm)
 - Creep: 20.0" (508 mm)

Application

KOR-11 current transformers operate with a high degree of accuracy on either metering or relaying circuits. The single primary bushing construction makes them particularly suited to applications on overhead lines with drop leads. Double ratio designs are available by means of a secondary tapped winding.

Construction features

Primary and secondary windings are assembled around a toroidal core and attached to a support frame. For insulation and protection, the assembly is vacuum cast in polyurethane.

Terminals

Primary terminals are conveniently located at the top of the high voltage bushing electro-tin plated copper. Clamp-type secondary terminals accommodate #14 to #1 wire. Terminal screws are slotted-head type.

Junction box

The junction box has a 1" diameter conduit entrance from three directions and is removable for simplified changeout. A ground terminal inside the box is conveniently located for grounding the transformer, or it may be grounded externally by the grounding lug located on the baseplate.

Baseplate

The base is constructed of corrosion-resistant aluminum and is secured to the encapsulated base support.

Mounting

The KOR-11 can be mounted in upright, cantilever, or upside-down positions. Stress relief devices should be used to support cable connections.



Test reports

Test reports are stored electronically and can be e-mailed in various formats at the time of shipment.

Standards

This unit can be tested to all applicable IEEE, CSA, or IEC standards as requested.

Optional mounting accessories

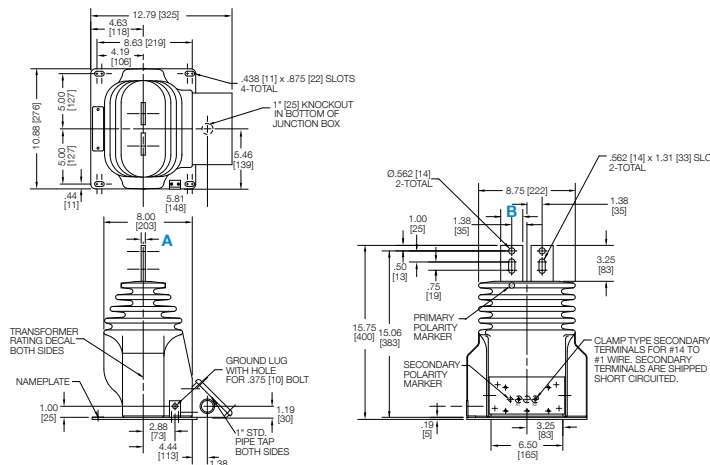
- Vertical mounting with mounting brackets & back-up plates:
 - Mounting bracket 463C035G02
 - Back-up plate 28D2876G01
- Vertical mounting with mounting brackets and hangers:
 - Mounting bracket 463C035G02
 - Hangers 261A233G01
- Vertical mounting with channel brackets for tandem mounting of voltage and current transformers:
 - Channel bracket 332B955G02
- Horizontal mounting with hangers:
 - Hangers 261A233G01

Selection guide

Primary amp rating	Rating factor @ 30°C	Metering accuracy	Relaying accuracy	Thermal rating (x normal, 1 sec)	Mechanical rating	Style number
5	1.5	0.3B-1.8	T200	100	150	7524A12G01
10	1.5	0.3B-1.8	T200	100	150	7524A12G02
15	1.5	0.3B-1.8	T200	100	150	7524A12G03
20	1.5	0.3B-1.8	T200	100	150	7524A12G04
25	1.5	0.3B-1.8	T200	100	150	7524A12G05
30	1.5	0.3B-1.8	T200	100	150	7524A12G06
40	1.5	0.3B-1.8	T200	100	150	7524A12G07
50	1.5	0.3B-1.8	T200	100	150	7524A12G08
75	1.5	0.3B-1.8	T200	100	150	7524A12G09
100	1.5	0.3B-1.8	T200	100	150	7524A12G10
150	1.5	0.3B-1.8	T200	100	150	7524A12G11
200	1.5	0.3B-1.8	T200	100	150	7524A12G12
5/10	2.0/1.5	0.3B-0.9/0.3B-1.8	T90/T200	100/200	300/150	7524A13G01
10/20	2.0/1.5	0.3B-0.9/0.3B-1.8	T90/T200	100/200	300/150	7524A13G02
20/40	2.0/1.5	0.3B-0.9/0.3B-1.8	T90/T200	100/200	300/150	7524A13G03
25/50	2.0/1.5	0.3B-0.9/0.3B-1.8	T90/T200	100/200	300/150	7524A13G04
50/100	2.0/1.5	0.3B-0.9/0.3B-1.8	T90/T200	100/200	300/150	7524A13G05
75/150	2.0/1.5	0.3B-0.9/0.3B-1.8	T90/T200	100/200	300/150	7524A13G06
100/200	2.0/1.5	0.3B-0.9/0.3B-1.8	T90/T200	100/200	300/150	7524A13G07
150/300	2.0/1.5	0.3B-0.9/0.3B-1.8	T90/T200	100/200	300/150	7524A13G08
200/400	2.0/1.5	0.3B-0.9/0.3B-1.8	T90/T200	100/200	300/150	7524A13G09
300/600	2.0/1.5	0.3B-0.9/0.3B-1.8	T90/T200	100/200	300/150	7524A13G10
400/800	2.0/1.5	0.3B-0.9/0.3B-1.8	T90/T200	100/200	300/150	7524A13G11
600/1200	2.0/1.5	0.3B-0.9/0.3B-1.8	T90/T200	100/200	300/150	7524A13G12

For 50 Hz styles, contact the factory.

Unit dimensions



For more information please contact:

ABB Inc.
Medium Voltage Distribution Components
 3022 NC 43 North
 Pinetops, NC 27864
 USA
 Phone: +1 252 827 3212
 Fax: +1 252 827 4286

www.abb.com/mediumvoltage

Note:

The information contained in this document is for general information purposes only. While ABB strives to keep the information up to date and correct, it makes no representations or warranties of any kind, express or implied, about the completeness, accuracy, reliability, suitability, or availability with respect to the information, products, services, or related graphics contained in the document for any purpose. Any reliance placed on such information is therefore strictly at your own risk. ABB reserves the right to discontinue any product or service at any time.

Copyright 2014 ABB.
 All rights reserved.

Bar dimensions

Primary ampere rating	A		B		Weight	
	(in)	(mm)	(in)	(mm)	(lb)	(kg)
5 - 150	.25	6	1.5	38	70	32
200 - 800	.375	10	2.0	51	73	33