

Application note: Control Builder M

Creating a new project and configuring the hardware 800xA

After the installation and the first steps it's necessary to create a new project in Control Builder M. In this application note is described how to open and save a new project and to configure all connected extension modules to the 800M controller. The second part of this manual is how to update the firmware of the connected extension modules. In the last chapter will be explained how to use the integrated webserver and how to find the connected slaves.



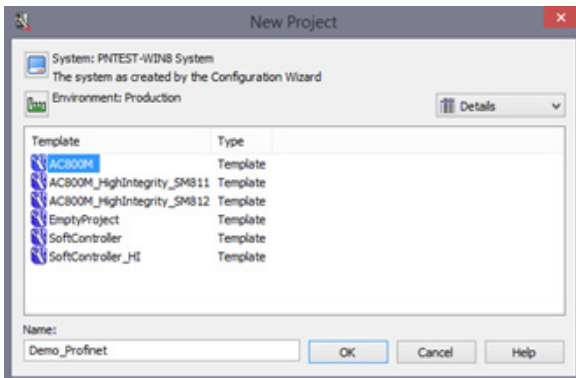
This document is the first out of three documents. In the second application note "Application Note Connecting a Profinet slave to the 800xA" is described how to configure a Profinet network and how to insert slaves with an example of connecting an UMC100.3 democase via PNQ22 Profinet module. The third document "Application Note Connecting a Profibus slave to the 800xA" includes the configuration of a Profibus network and an example how to connect a UMC100.3 democase via PDP32.0 communication plug.

Creating a new project

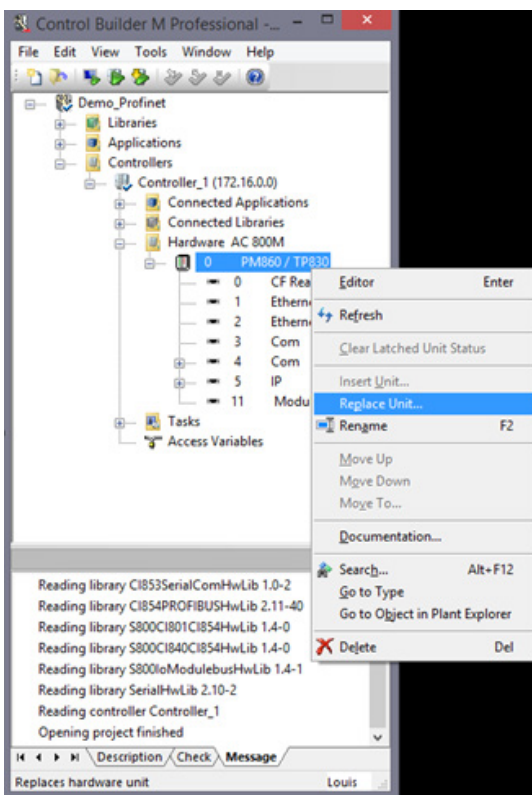
1. Open Control Builder M
2. Click on the icon inside the Control Builder M to open a new project.



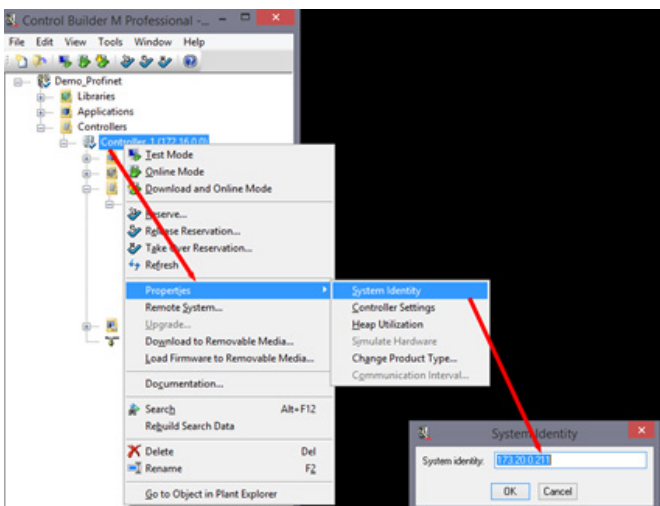
- Choose the used controller (800M) and define the project name.
- Press "OK"



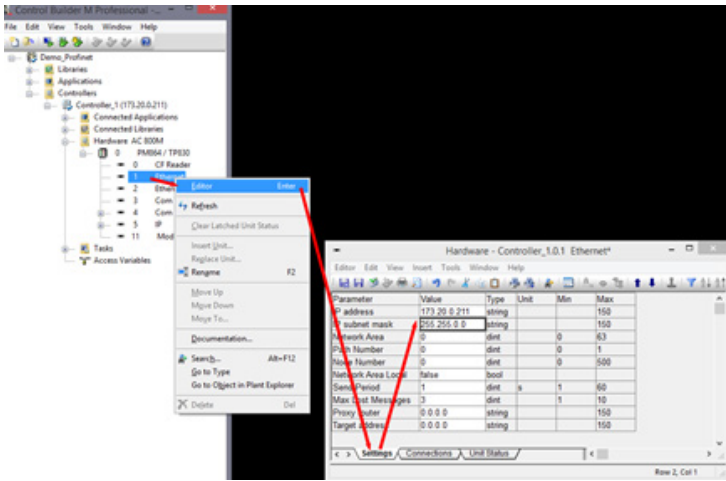
- The Control Builder M opens a project tree, filled with all standard menus and a predefined controller. Please check if it fits to the used controller, otherwise press with a right click on the controller and select the new one with "Replace Unit...".



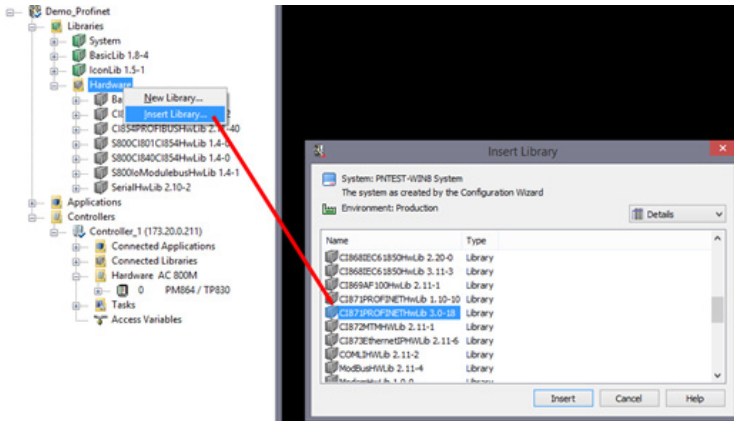
- The IP address will be set with a right click on "Controller 1" -> "Properties" -> "System Identity". Afterwards apply the changes by clicking on "OK"



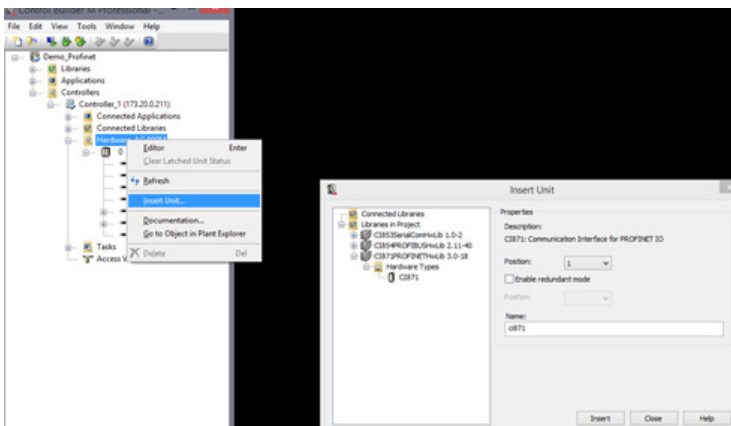
7. The same IP address from “Controller 1” has to be set at “Ethernet port 1”.



8. Please check if in the Hardware Library every used extension module is available (in our case Profibus module CI854A and Profinet module CI871). If one module is not available click with a right click on “Hardware” -> “Insert Library” and look for the correct library. If there more than one library for one device, always select the newest version.

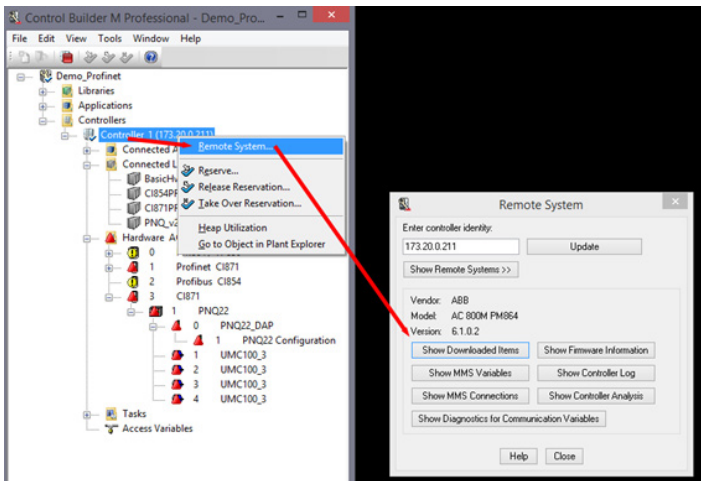


9. With a right click on “Hardware 800M” -> “Insert Unit” the extension modules can be added to the hardware configuration (NOTE: When asking for the position you have to count from the controller! Communication modules will be connected on the left side of the controller and I/O extension modules on the right side. For each type of extension module (communication and IO) the first device next to the controller starts with position 1. In this example the Profinet module is on position 1 and the Profibus module on position 2.

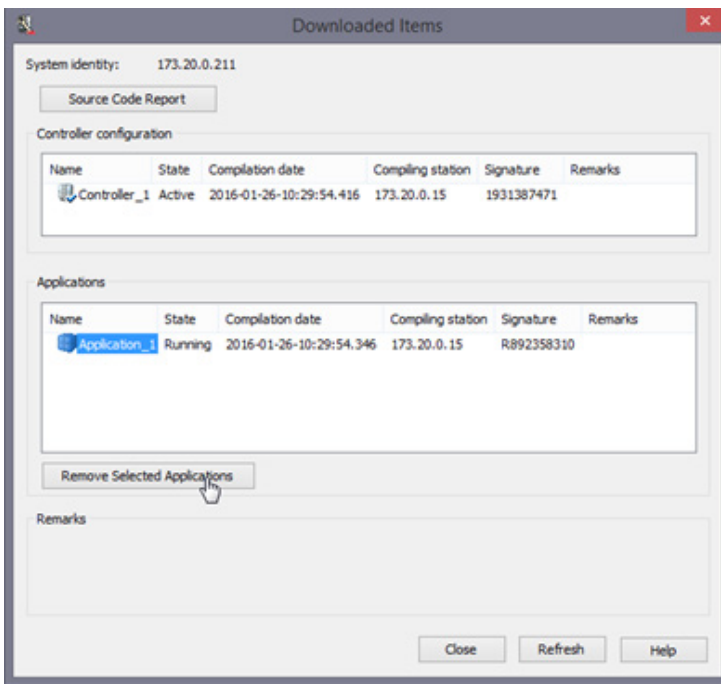


Firmware update of Communication module

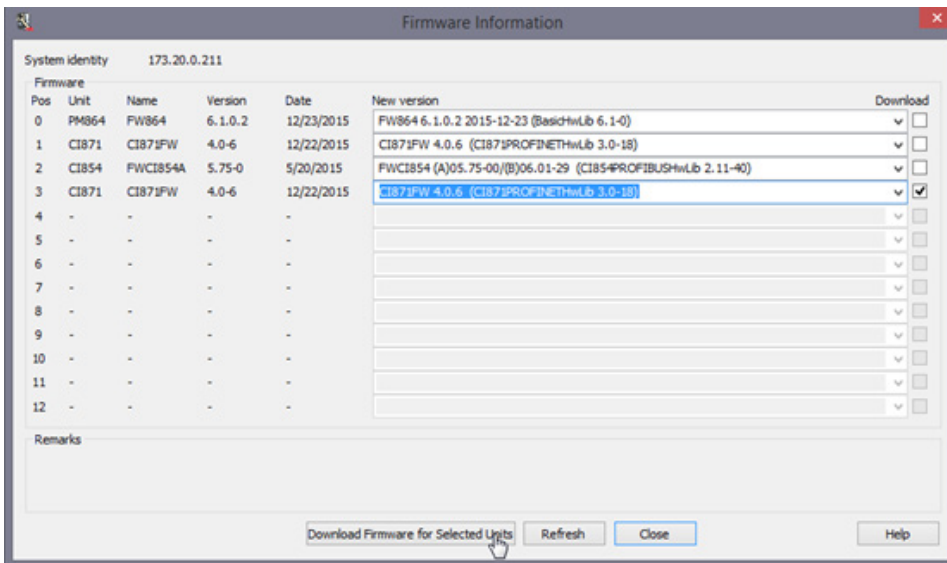
1. Change to online mode inside the Control Builder M (800M controller must be connected via Ethernet to the computer).
2. With a right click on “Controller_1 (173.20.0.211)” select “Remote System”.
3. Select “Show downloaded items”



4. Select the application of the controller and delete it by clicking on “Remove Selected Applications”.



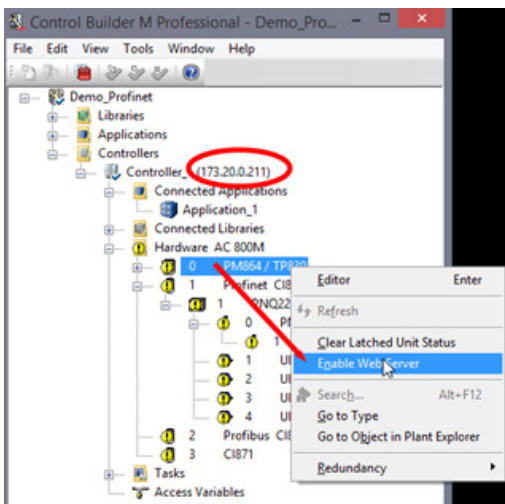
5. Afterwards click on “Show Firmware Information” inside the window “Remote System”
6. Inside the window of the module which shall be updated choose the new version (select the newest library) and make a tick at “Download”.
7. With the button “Download Firmware for Selected Units” the download will be started.



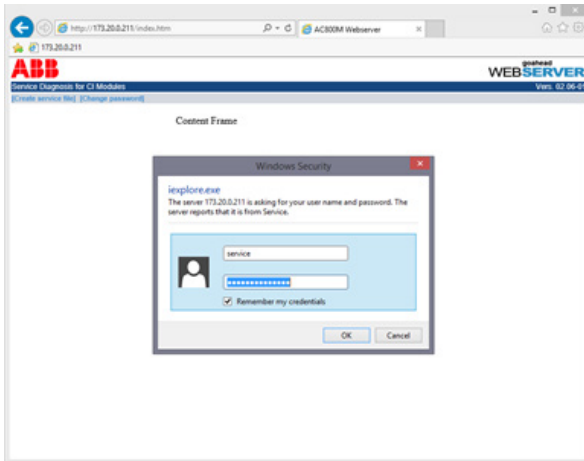
8. Follow the instructions of the installation wizard.

Using the integrated Webserver of 800M controller

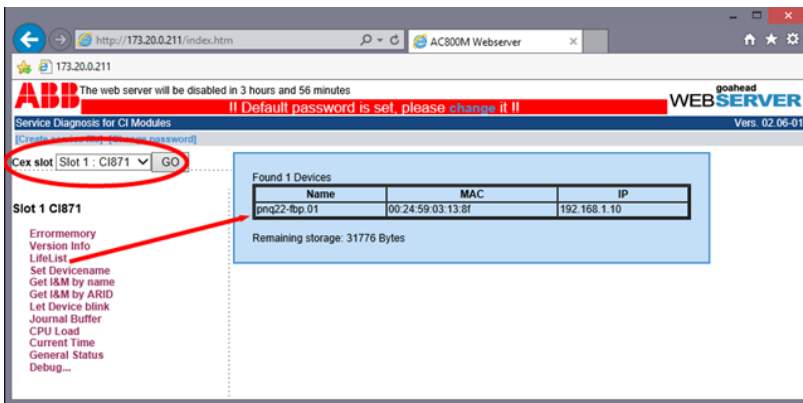
1. Activate the online connection between the computer and the 800M controller.
2. With a right click on the controller click on “Enable Web Server”
3. Open the Internet Explorer and type in the IP-address of the controller



- The Internet Explorer will ask for the credentials. These will be: username: "service" and password: "ABB800xA" for standard and can be changed online.



- After the login the communication module can be selected in "Cex Slot" and with the "LifeList" all connected (and powered) devices are displayed.



After 4 hours the server will be disabled automatically and has to be enabled manually again.

Version History

| Version | What | Who | When |
|---------|------------------|----------------|------------|
| V1 | Initial Document | Sebastian Koll | 05.04.2016 |

Contact us

ABB STOTZ-KONTAKT GmbH

P. O. Box 10 16 80
69006 Heidelberg, Germany
Phone: +49 (0) 6221 7 01-0
Fax: +49 (0) 6221 7 01-13 25
E-mail: info.desto@de.abb.com

You can find the address of your
local sales organisation on the
ABB home page
<http://www.abb.com/contacts>
-> Low Voltage Products and Systems

Legal note:

We reserve the right to make technical changes or modify the contents of this document without prior notice. With regard to purchase orders, the agreed particulars shall prevail. ABB AG does not accept any responsibility whatsoever for potential errors or possible lack of information in this document.

We reserve all rights in this document and in the subject matter and illustrations contained therein. Any reproduction, disclosure to third parties or utilization of its contents – in whole or in parts – is forbidden without prior written consent of ABB AG.

Copyright 2016 ABB
All rights reserved