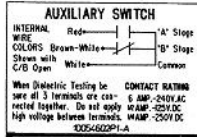


NOTES:

7. SEE OUTLINE DRAWING I0054370SH3.
6. SEE I0054370SH5 AND I0054370SH6 FOR ADDITIONAL INFORMATION.
5. CUSTOMER'S LOCATION FOR DRILLING HOLE FOR HORIZONTALLY OR VERTICALLY INTERCONNECTED MECHANICAL INTERLOCK. SEE BOTTOM OR SIDE VIEW.
4. 3.74 [95] MINIMUM DISTANCE ABOVE SUBSTRUCTURE TO ANY METAL IN AN AREA 5.31 X 16.00 [134.9 X 406.4] DUE TO ARC CHAMBER VENTING.
3. ANY COMPARTMENT METAL IN 6.50 X 14.00 [165.1 X 355.6] AREA BELOW (AND ABOVE AT 1600A MINIMUM STACKING HEIGHT) MUST BE REMOVED. REF UL891 DEAD-FRONT SWITCHBOARDS STANDARD-ELECTRICAL SPACING REQUIREMENTS.
2. DIMENSIONS IN BRACKETS ARE IN [MILLIMETERS].
1. ALL OUTLINE DIMENSIONS ARE THE SAME FOR MANUALLY AND ELECTRICALLY OPERATED DEVICES.

ABB				
POWER BREAK II				
CIRCUIT BREAKER 800A DRAWOUT				
THIRD ANGLE	SHEET#	DWG. NO.	DATE	REV
	3 of 19	GEM3025	28-Oct-22	C

"WRITE ON" SPACES FOR SWITCH
CIRCUIT IDENTIFICATION

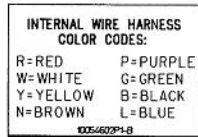


19 AUX. II 'A'	1 AUX. 12 'A'
20 AUX. II 'B'	2 AUX. 12 'B'
21 AUX. II COM	3 AUX. 12 COM
22 AUX. 9 'A'	4 AUX. 10 'A'
23 AUX. 9 'B'	5 AUX. 10 'B'
24 AUX. 9 COM	6 AUX. 10 COM
25 AUX. 7 'A'	7 AUX. 8 'A'
26 AUX. 7 'B'	8 AUX. 8 'B'
27 AUX. 7 COM	9 AUX. 8 COM
28 AUX. 5 'A'	10 AUX. 6 'A'
29 AUX. 5 'B'	11 AUX. 6 'B'
30 AUX. 5 COM	12 AUX. 6 COM
31 AUX. 3 'A'	13 AUX. 4 'A'
32 AUX. 3 'B'	14 AUX. 4 'B'
33 AUX. 3 COM	15 AUX. 4 COM
34 AUX. 1 'A'	16 AUX. 2 'A'
35 AUX. 1 'B'	17 AUX. 2 'B'
36 AUX. 1 COM	18 AUX. 2 COM

FAR*
ROW

NEAR*
ROW

LEFT SIDE
TERMINAL BLOCK LABEL
BLOCK "A"



16 ELECT. OPER.+ R	36 ELECT. OPER.- B
17 RMT. CHG. W	35 RMT. CHG. L
16 RMT. CLS.+ Y	34 RMT. CLS.- N
15 B.A. ONLY COM Y	33 CHG. IND. Y
14 B.A. ONLY N.O. N	32 SHUNT TRIP B
13 B.A. ONLY N.C. P	31 SHUNT TRIP B
12 B.A. LOCKOUT COM W	30 U.V.R. L
11 B.A. LOCKOUT N.O. R	29 U.V.R. L
10 B.A. LOCKOUT N.C. B	28 B B
9	27
8	26 ZSI INPUT- W
7 COMMNET- G	25 ZSI INPUT+ G
6 COMMNET+ W	24 ZSI OUTPUT- W
5 C Ø VOLTS R	23 ZSI OUTPUT+ R
4 B Ø VOLTS W	22 D/O SWITCH W
3 A Ø VOLTS L	21 D/O SWITCH L
2 24VOLTS DC- B	20 A H TAP B
1 24VOLTS DC+ R	19 B H COM. W

NEAR*
ROW

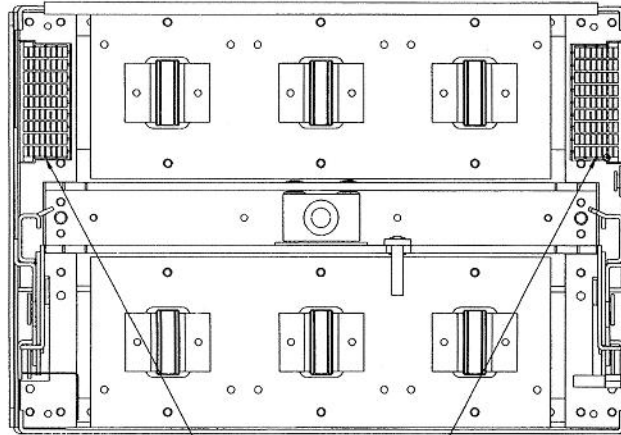
FAR*
ROW

RIGHT SIDE
TERMINAL BLOCK LABEL
BLOCK "B"

*SCREW TERMINAL POSITION RELATIVE
TO FRONT OF CIRCUIT BREAKER

WIRE CHART

NOTE: WIRE RANGE #18 THRU #12
SOLID OR 3 STRANDED COPPER WIRE.
TORQUE: 9LB-IN.



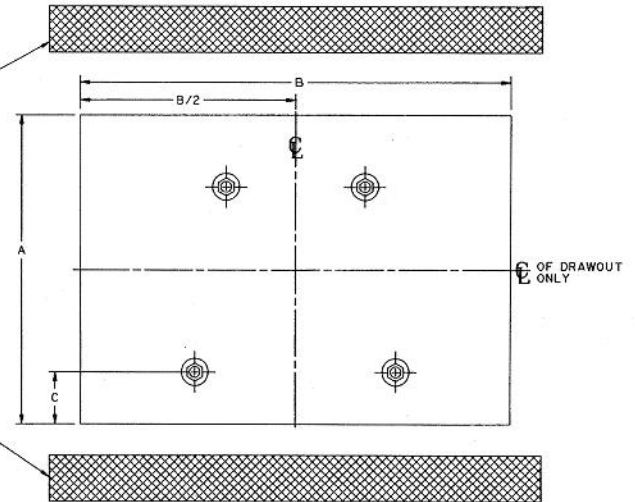
SECONDARY
DISCONNECT
PLUG
(DEDICATED POSITIONS)

28	19	10	1
29	20	11	2
30	21	12	3
31	22	13	4
32	23	14	5
33	24	15	6
34	25	16	7
35	26	17	8
36	27	18	9

9	18	27	36
8	17	26	35
7	16	25	34
6	15	24	33
5	14	23	32
4	13	22	31
3	12	21	30
2	11	20	29
1	10	19	28

LEFT SIDE RIGHT SIDE

NOTE: ALL WIRES ON LEFT = AUX. SWITCH WIRES.
ALL WIRES ON RIGHT = ALL OTHER WIRING.
*S CORRESPOND TO WIRE CHART
I.E. *31, 32 RIGHT = SHUNT TRIP



RECOMMENDED DOOR CUT-OUT
FOR 800, 1600 AND 2000A FRAME SIZE
CIRCUIT BREAKERS

FRAME RATING	BREAKER TYPE	WEIGHT		MINIMUM COMPARTMENT VOLUME	MINIMUM DOOR VENTILATION	STANDARD DOOR CUT-OUT			OPTIONAL DOOR CUT-OUT		
		BREAKER	DRAWOUT SUBSTRUCTURE			A	B	C	A	B	C
800A	STATIONARY MOUNTED	71 LBS* [32.3KG]	N/A	3447 CU.IN. [56486CU.CM]	NONE	10	14	1.69	9.83	13.38	1.605
[254]		[356]				[42.9]	[249.7]	[339.9]	[40.8]		
TRIM PLATE REQUIRED						FLUSH FRONT OR NON-HINGED DOOR CONSTRUCTION- TRIM PLATE MAY BE OMITTED					
1600A	DRAWOUT MOUNTED	79 LBS* [35.9KG]	54 LBS [24.5KG]	3780 CU.IN. [61943CU.CM]	NONE	10	14	N/A	9.83	13.38	N/A
[254]		[356]				[249.7]	[339.9]				
TRIM PLATE REQUIRED						FLUSH FRONT OR NON-HINGED DOOR CONSTRUCTION- TRIM PLATE MAY BE OMITTED					
2000A	DRAWOUT MOUNTED	106 LBS* [48.2KG]	68 LBS [30.9KG]	5670 CU.IN. [92915CU.CM]	NONE	10	14	N/A	9.83	13.38	N/A
[254]		[356]				[249.7]	[339.9]				
TRIM PLATE REQUIRED						FLUSH FRONT OR NON-HINGED DOOR CONSTRUCTION- TRIM PLATE MAY BE OMITTED					

N/A = NOT APPLICABLE
* ADD 9 LBS [4.1KG]
FOR ELECTRICAL OPERATOR

TABLE 1

- NOTES:
- SEE OUTLINE DRAWING I0054370SH5.
 - BUSBARS OR CABLES SHOULD BE SIZED PER UL891 DEAD-FRONT SWITCHBOARDS STANDARD.
 - DIMENSIONS IN BRACKETS ARE [METRIC].

ABB

POWER BREAK II

CIRCUIT BREAKER WEIGHTS & VENTS INFO

THIRD ANGLE	SHEET#	DWG NO.	DATE	REV
	5 of 19	GEM3025	28-Oct-22	C