
 TECHNICAL DATA SHEET

Ferrules, bare

Metric

Spec-Kon®



Bare ferrules are thin-walled copper tubes, which are mechanically crimped onto the ends of stranded wires.

Certifications / Standards:



Application:

- Bare ferrules for copper conductors ranging in size from 0.14 to 240 mm²
- Tools
 - ERG4
 - FER9500
 - FER9501

Material:

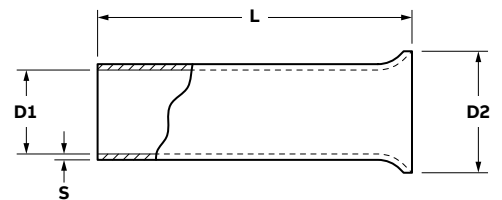
- Tin-plated copper

Conforms to:

- DIN: 46228-1 standard
- UL and CSA standards, see product selection tables

Ferrules, bare

Metric

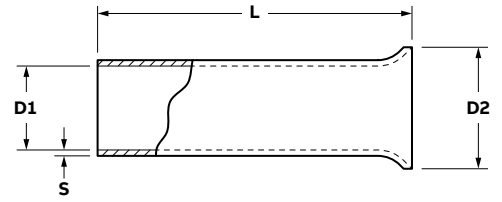


Product selection

Part no:	Wire size (mm ²)	Dimensions (mm)				UL/CSA standard compliance	Tool 1	Tool 2	Tool 3
		D1	D2	L	S				
FER01407UN	0.14	0.65	1.6	7	0.15	No	FER9500	FER9501	N/A
FER0205UN	0.25	0.75	1.7	5	0.15	No	ERG4	FER9500	FER9501
FER0207UN	0.25	0.75	1.7	7	0.15	No	ERG4	FER9500	FER9501
FER0305UN	0.34	0.85	1.8	5	0.15	No	ERG4	FER9500	FER9501
FER0307UN	0.34	0.85	1.8	7	0.15	No	ERG4	FER9500	FER9501
FER0506UN	0.5	1	2.1	6	0.15	Yes	ERG4	FER9500	FER9501
FER0507UN	0.5	1	2.1	7	0.15	Yes	ERG4	FER9500	FER9501
FER0508UN	0.5	1	2.1	8	0.15	Yes	ERG4	FER9500	FER9501
FER0510UN	0.5	1	2.1	10	0.15	Yes	ERG4	FER9500	FER9501
FER0512UN	0.5	1	2.1	12	0.15	Yes	ERG4	FER9500	FER9501

Note: Product must be installed in accordance with applicable national and local electrical codes.

—
Ferrules, bare
Metric

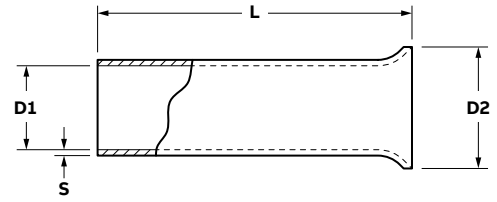


Product selection

Part no:	Wire size (mm ²)	Dimensions (mm)				UL/CSA standard compliance	Tool 1	Tool 2	Tool 3
		D1	D2	L	S				
FER7506UN	0.75	1.2	2.3	6	0.15	Yes	ERG4	FER9500	FER9501
FER7508UN	0.75	1.2	2.3	8	0.15	Yes	ERG4	FER9500	FER9501
FER7510UN	0.75	1.2	2.3	10	0.15	Yes	ERG4	FER9500	FER9501
FER7512UN	0.75	1.2	2.3	12	0.15	Yes	ERG4	FER9500	FER9501
FER7515UN	0.75	1.2	2.3	15	0.15	Yes	ERG4	FER9500	FER9501
FER1006UN	1	1.4	2.5	6	0.15	Yes	ERG4	FER9500	FER9501
FER1007UN	1	1.4	2.5	7	0.15	Yes	ERG4	FER9500	FER9501
FER1008UN	1	1.4	2.5	8	0.15	Yes	ERG4	FER9500	FER9501
FER1010UN	1	1.4	2.5	10	0.15	Yes	ERG4	FER9500	FER9501
FER1012UN	1	1.4	2.5	12	0.15	Yes	ERG4	FER9500	FER9501
FER1015UN	1	1.4	2.5	15	0.15	Yes	ERG4	FER9500	FER9501
FER1506UN	1.5	1.7	2.8	6	0.15	No	ERG4	FER9500	FER9501
FER1507UN	1.5	1.7	2.8	7	0.15	Yes	ERG4	FER9500	FER9501
FER1508UN	1.5	1.7	2.8	8	0.15	Yes	ERG4	FER9500	FER9501
FER1510UN	1.5	1.7	2.8	10	0.15	Yes	ERG4	FER9500	FER9501
FER1512UN	1.5	1.7	2.8	12	0.15	Yes	ERG4	FER9500	FER9501
FER1515UN	1.5	1.7	2.8	15	0.15	Yes	ERG4	FER9500	FER9501
FER1518UN	1.5	1.7	2.8	18	0.15	Yes	ERG4	FER9500	FER9501
FER1520UN	1.5	1.7	2.8	20	0.15	Yes	ERG4	FER9500	FER9501
FER2507UN	2.5	2.2	3.4	7	0.15	Yes	ERG4	FER9500	FER9501
FER2508UN	2.5	2.2	3.4	8	0.15	Yes	ERG4	FER9500	FER9501
FER2510UN	2.5	2.2	3.4	10	0.15	Yes	ERG4	FER9500	FER9501
FER2512UN	2.5	2.2	3.4	12	0.15	Yes	ERG4	FER9500	FER9501
FER2515UN	2.5	2.2	3.4	15	0.15	Yes	ERG4	FER9500	FER9501
FER2518UN	2.5	2.2	3.4	18	0.15	Yes	ERG4	FER9500	FER9501
FER2520UN	2.5	2.2	3.4	20	0.15	Yes	ERG4	FER9500	FER9501
FER4009UN	4	2.8	4	9	0.2	Yes	ERG4	FER9500	FER9501
FER4010UN	4	2.8	4	10	0.2	Yes	ERG4	FER9500	FER9501
FER4012UN	4	2.8	4	12	0.2	Yes	ERG4	FER9500	FER9501
FER4015UN	4	2.8	4	15	0.2	Yes	ERG4	FER9500	FER9501
FER4018UN	4	2.8	4	18	0.2	Yes	ERG4	FER9500	FER9501
FER4020UN	4	2.8	4	20	0.2	Yes	ERG4	FER9500	FER9501
FER6010UN	6	3.5	4.7	10	0.2	Yes	ERG4	FER9500	FER9501
FER6012UN	6	3.5	4.7	12	0.2	Yes	ERG4	FER9500	FER9501
FER6015UN	6	3.5	4.7	15	0.2	Yes	ERG4	FER9500	FER9501
FER6018UN	6	3.5	4.7	18	0.2	Yes	ERG4	FER9500	FER9501
FER6020UN	6	3.5	4.7	20	0.2	Yes	ERG4	FER9500	FER9501
FER10012UN	10	4.5	5.8	12	0.2	Yes	ERG4	FER9500	FER9501
FER10015UN	10	4.5	5.8	15	0.2	Yes	ERG4	FER9500	FER9501
FER10018UN	10	4.5	5.8	18	0.2	Yes	ERG4	FER9500	FER9501
FER10020UN	10	4.5	5.8	20	0.2	Yes	ERG4	FER9500	FER9501
FER10025UN	10	4.5	5.8	25	0.2	Yes	ERG4	FER9500	FER9501

Note: Product must be installed in accordance with applicable national and local electrical codes.

—
Ferrules, bare
Metric



Product selection

Part no:	Wire size (mm ²)	Dimensions (mm)				UL/CSA standard compliance	Tool 1	Tool 2	Tool 3
		D1	D2	L	S				
FER16012UN	16	5.8	7.5	12	0.2	Yes	ERG4	N/A	N/A
FER16015UN	16	5.8	7.5	15	0.2	Yes	ERG4	N/A	N/A
FER16018UN	16	5.8	7.5	18	0.2	Yes	ERG4	N/A	N/A
FER16020UN	16	5.8	7.5	20	0.2	Yes	ERG4	N/A	N/A
FER16025UN	16	5.8	7.5	25	0.2	Yes	ERG4	N/A	N/A
FER16032UN	16	5.8	7.5	32	0.2	Yes	ERG4	N/A	N/A
FER25012UN	25	7.3	9.5	12	0.2	No	ERG4	N/A	N/A
FER25015UN	25	7.3	9.5	15	0.2	Yes	ERG4	N/A	N/A
FER25018UN	25	7.3	9.5	18	0.2	Yes	ERG4	N/A	N/A
FER25025UN	25	7.3	9.5	25	0.2	Yes	ERG4	N/A	N/A
FER25032UN	25	7.3	9.5	32	0.2	Yes	ERG4	N/A	N/A
FER35012UN	35	8.3	11	12	0.2	No	ERG4	N/A	N/A
FER35018UN	35	8.3	11	18	0.2	Yes	ERG4	N/A	N/A
FER35020UN	35	8.3	11	20	0.2	Yes	ERG4	N/A	N/A
FER35022UN	35	8.3	11	22	0.2	Yes	ERG4	N/A	N/A
FER35025UN	35	8.3	11	25	0.2	Yes	ERG4	N/A	N/A
FER35030UN	35	8.3	11	30	0.2	Yes	ERG4	N/A	N/A
FER35032UN	35	8.3	11	32	0.2	Yes	ERG4	N/A	N/A
FER50018UN	50	10.3	13	18	0.3	Yes	ERG4	N/A	N/A
FER50022UN	50	10.3	13	22	0.3	Yes	ERG4	N/A	N/A
FER50025UN	50	10.3	13	25	0.3	Yes	ERG4	N/A	N/A
FER50032UN	50	10.3	13	32	0.3	Yes	ERG4	N/A	N/A
FER70025UN	70	12.5	15	25	0.4	No	N/A	N/A	N/A
FER70032UN	70	12.5	15	32	0.4	No	N/A	N/A	N/A
FER95025UN	95	14.5	17	25	0.4	No	N/A	N/A	N/A
FER95030UN	95	14.5	17	30	0.4	No	N/A	N/A	N/A
FER95032UN	95	14.5	17	32	0.4	No	N/A	N/A	N/A
FER12032UN	120	16.5	19	32	0.5	No	N/A	N/A	N/A
FER15032UN	150	18.5	21	32	0.5	No	N/A	N/A	N/A
FER15038UN	150	18.5	21	38	0.5	No	N/A	N/A	N/A
FER18532UN	185	20	23.5	32	0.5	No	N/A	N/A	N/A
FER18540UN	185	20	23.5	40	0.5	No	N/A	N/A	N/A
FER24040UN	240	22.8	25.8	40	0.5	No	N/A	N/A	N/A

Note: Product must be installed in accordance with applicable national and local electrical codes.