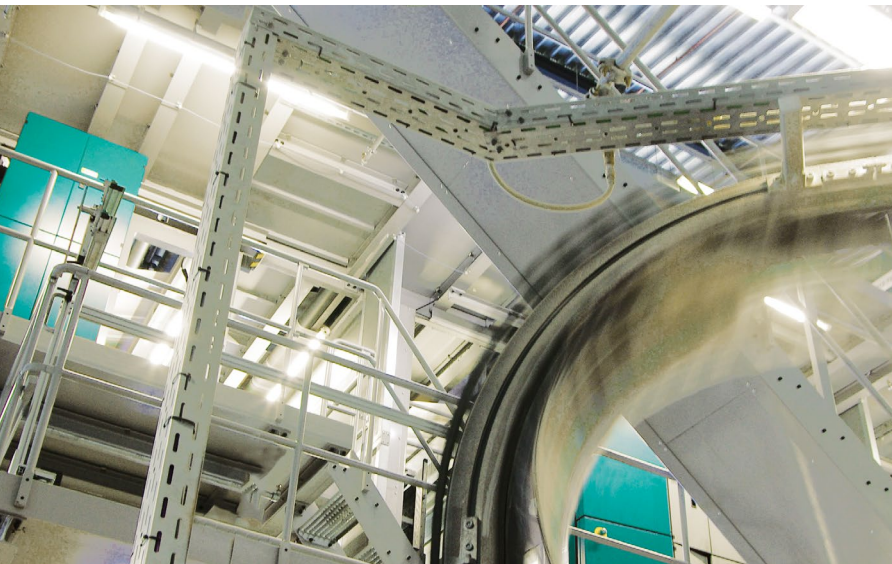


PRESS MANAGEMENT

MPS Production

Online Production Viewer



The Online Production Viewer is a module of the press management system MPS Production. It provides various overviews of completed, running and planned print jobs that can be displayed on a PC, e.g. at a normal MPS Production workplace, but also on mobile devices such as smartphones and tablets.

The functionality provided by the Online Production Viewer can be divided into four categories:

- Print job queue
- Active print jobs, including the print job detail function
- Schedule
- Reports

Print job queue

This function shows the print job queue for all presses. The content of the display can be adapted according to the wishes of the customer. The data

shown per print job includes order date, publication name, edition, product structure, production mode (straight/collect), current state, planned start & end times, difference to actual times, circulation, copies still to be printed and percentage waste.

The background to the print job information is color-coded according to the following states:

- Structure of product defined
- Print product approved
- Print job active on press: setup ongoing
- Print job active on press: starting up
- Print job active on press: active and printing good copies
- Print job active on press: active but press stopped
- Print job is terminated

Order date	Publication name	Edition	Product structure	Production kind	State	Planned	Diff.	Circulation	Net	Remaining circulation	Waste
F1 3000 Cph											
24.08	SCOR	BRUX	R18 BR8	Collect	Finished	2:38 AM - 2:42 AM	00:00	20985	21004	-19	0.09%
24.08	JEUJ	BRUX	R102(R) BR8(C) BR8	Collect	Finished	3:00 AM - 3:07 AM	00:00	79647	80183	-536	0.67%
24.08	JEUJ	BRUX	R102(R) BR8(C) BR8	Collect	Finished	3:00 AM - 3:07 AM	00:00	12317	12556	-239	1.91%
30.08	PUBL	NAMA	R142(R) BR8(C) BR8	Collect	Ready	5:00 PM - 6:20 PM	00:00	66271	0	66271	0
30.08	FOHD	FOHD	R10 BR8	Collect	Ready	5:45 PM - 5:50 PM	00:00	11421	0	11421	0
25.08	SLCP	TOUR	R10 BR8 BR8 BR8	Collect	Ready	11:40 PM - 11:51 PM	00:00	6471	0	6471	0
31.08	SLCP	MOLUS	R10 BR8 BR8 BR8	Collect	Ready	12:05 AM - 12:15 AM	00:00	4150	0	4150	0
30.08	SLCP	PRODY	R10 BR8 BR8 BR8	Collect	Ready	12:30 AM - 12:35 AM	00:00	10701	0	10701	0
25.08	SLCP	CENT	R10 BR8 BR8 BR8	Collect	Ready	1:15 AM - 1:23 AM	00:00	5652	0	5652	0
F2 40000 Cph											
24.08	SCOR	CHAR	R16 BR8 BR8 BR8	Collect	Finished	1:05 AM - 2:37 AM	00:00	11717	11760	-43	0.37%
24.08	JEUJ	CENT	R102(R) BR8(C) BR8	Collect	Finished	8:10 AM - 10:29 AM	00:11	80626	80652	-26	0.03%
24.08	FRU	TOUR	FRU	Straight	Active	1:00 PM - 1:01 PM	00:00	3610	5075	2565	21.22%
24.08	SCOR	LECH	R102(R) BR8(C) BR8	Collect	Finished	1:28 PM - 1:30 PM	00:00	2099	0	2099	0
24.08	SCOR	MEL1	R102(R) BR8(C) BR8	Collect	Ready	6:40 PM - 1:03 PM	00:00	2953	0	2953	0
21.08	SCOR	NALU		Undefined	Defining without variant	10:45 PM - 11:12 PM	00:00	12637	0	12637	0
25.08	SCOR	LECH		Undefined	Defining without variant	11:45 PM - 12:00 AM	00:00	5213	0	5213	0
24.08	SCOR	HAIN		Undefined	Defining without variant	12:25 AM - 12:15 AM	00:00	10076	0	10076	0
24.08	SCOR	BRWA		Undefined	Defining without variant	1:05 AM - 1:19 AM	00:00	7938	0	7938	0
24.08	SCOR	BRUX		Undefined	Defining without variant	1:35 AM - 2:22 AM	00:00	21179	0	21179	0
F3 0 Cph											
24.08	SLCP	BRWA	R16 BR8 BR8 BR8	Collect	Finished	2:30 AM - 2:23 AM	00:00	1232	1231	-1	0.08%
24.08	SLCP	BRUX	R16 BR8 BR8 BR8	Collect	Finished	2:38 AM - 2:50 AM	00:00	6331	6331	0	0.00%
24.08	SLCP	NAMA	R10 BR8 BR8 BR8	Collect	Ready	10:45 PM - 10:41 PM	00:00	2523	0	2523	0
30.08	SLCP	LUXE	R10 BR8 BR8 BR8	Collect	Ready	11:08 PM - 11:18 PM	00:00	4102	0	4102	0
30.08	SLCP	MESU	R10 BR8 BR8 BR8	Collect	Ready	11:30 PM - 11:27 PM	00:00	4070	0	4070	0
25.08	SLCP	HAYW	R10 BR8 BR8 BR8	Collect	Ready	12:00 AM - 12:13 AM	00:00	5127	0	5127	0
31.08	SLCP	BAAM	R10 BR8 BR8 BR8	Collect	Ready	12:30 AM - 12:41 AM	00:00	4359	0	4359	0
25.08	SLCP	LECH	R10 BR8 BR8 BR8	Collect	Ready	12:55 AM - 1:02 AM	00:00	25071	0	25071	0

Print job queue for three presses

Active print jobs

This function displays data from all active print jobs at a production site with, for each print job, key data and a graphical representation of the progress of each job.

Clicking on the cog-wheel symbol opens the detailed display for the selected print job. The additional detail shown includes the event log with copy counts and press speed values.



Active print jobs display

Schedule

The “schedule” view shows the actual data and the planned data for a wide range of print jobs. The upper part of the screen shows a graphic representation of the schedule. The color of the actual print jobs shows whether the job is/was on-time (green) or delayed (the bigger the delay the more red it appears). The lower part shows a similar list of that in the print job queue display.

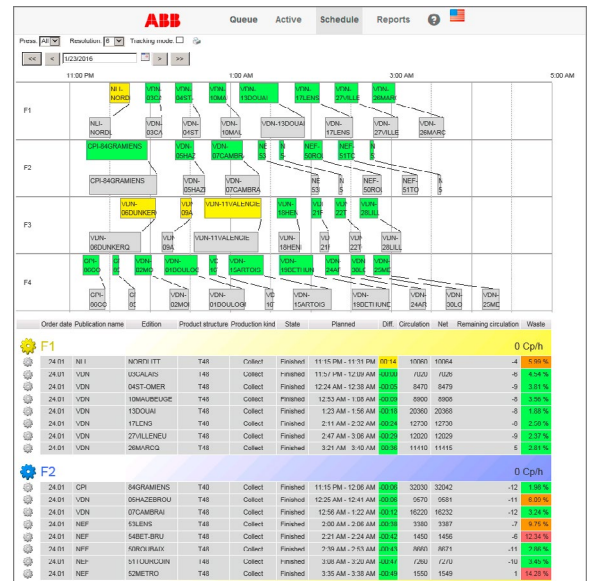
There are two modes of operation: tracking mode and non-tracking mode.

In tracking mode the current time, shown by a red vertical line, is always visible. The time range is set automatically.

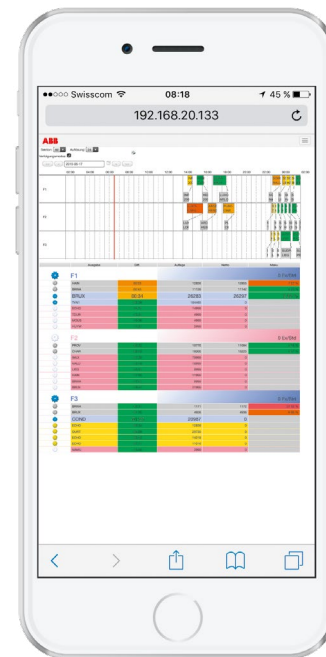
In non-tracking mode the user can select the time range to be displayed.

Reports

Any report or, indeed, any other form of document that is stored in a predefined folder on the server, can be viewed in this display.



Schedule view in non-tracking mode for a site with four press sections



iPhone version of the schedule display. The display can be zoomed in the normal way.