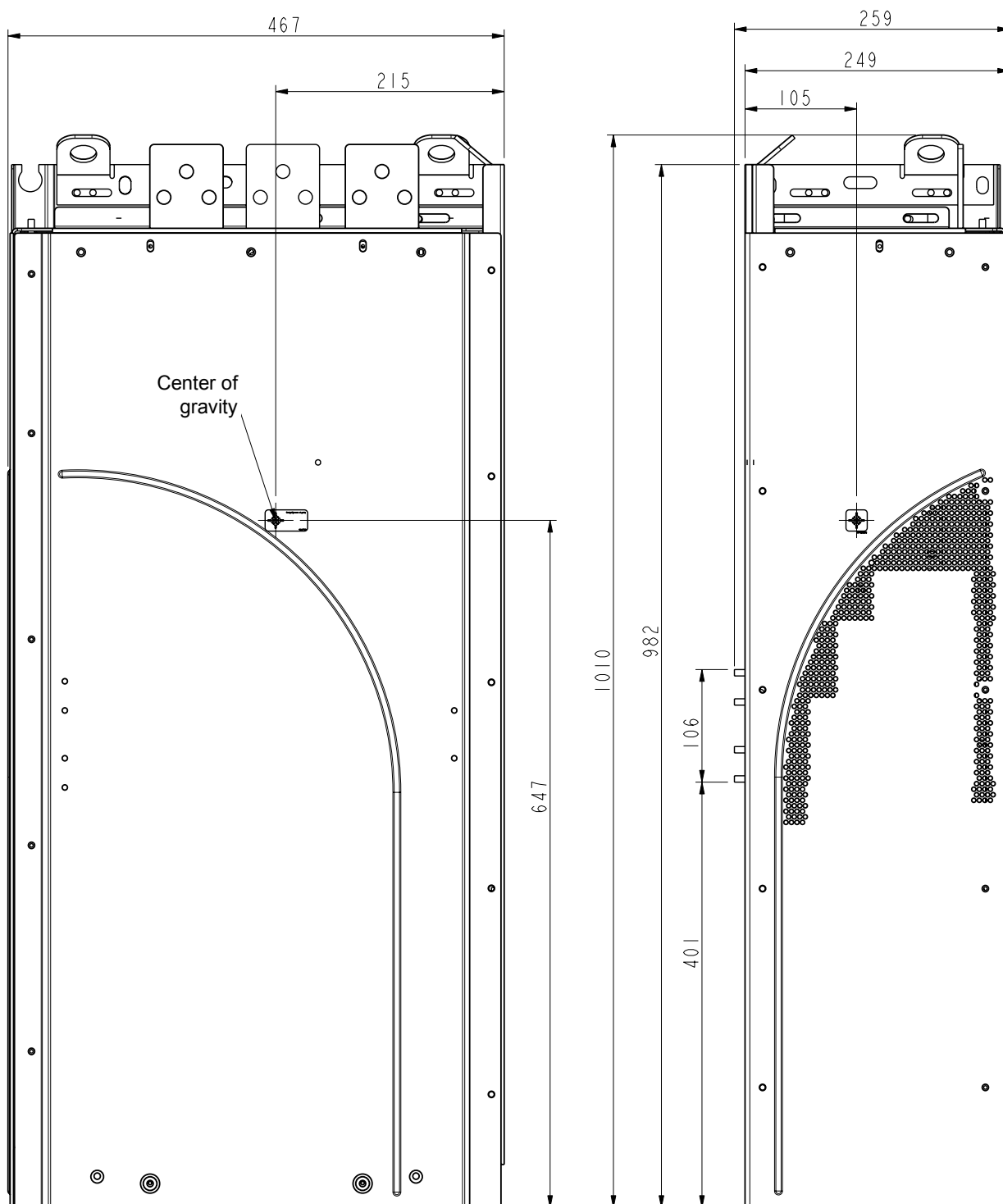
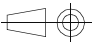


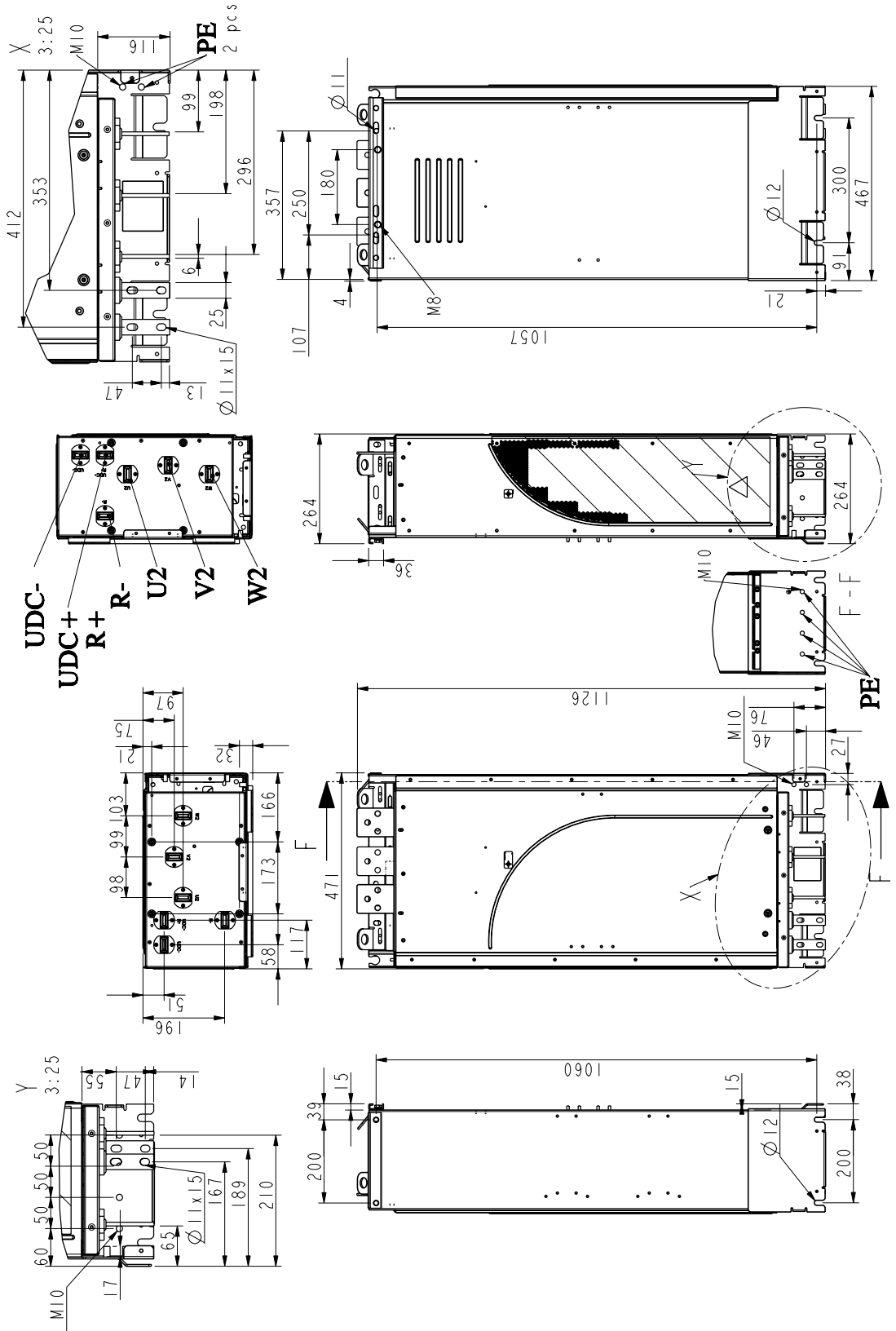
Dimensional drawings

Frame size R7 without pedestal (mm)

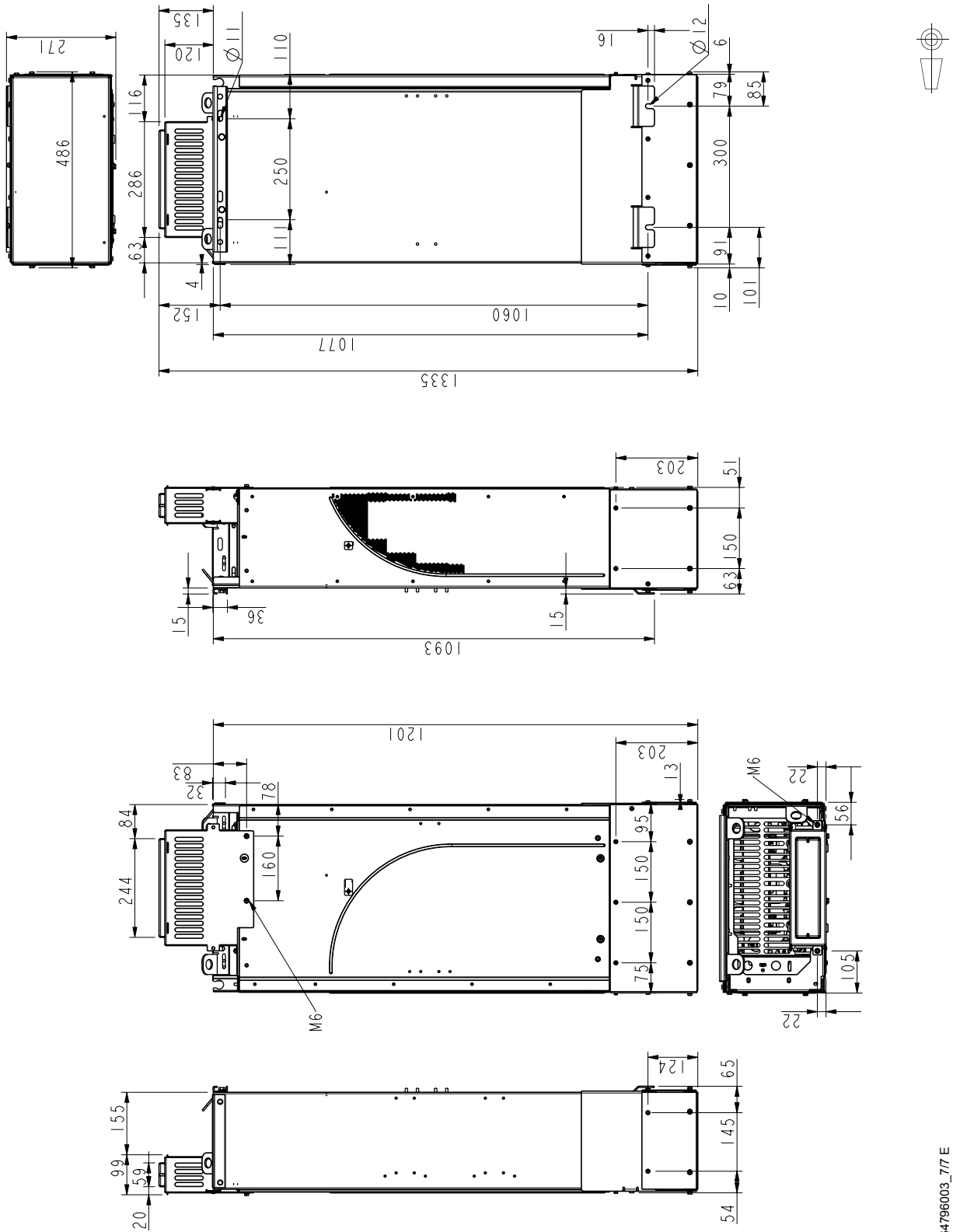



64796003_3/7 E

Frame size R7 with bottom exit (mm)

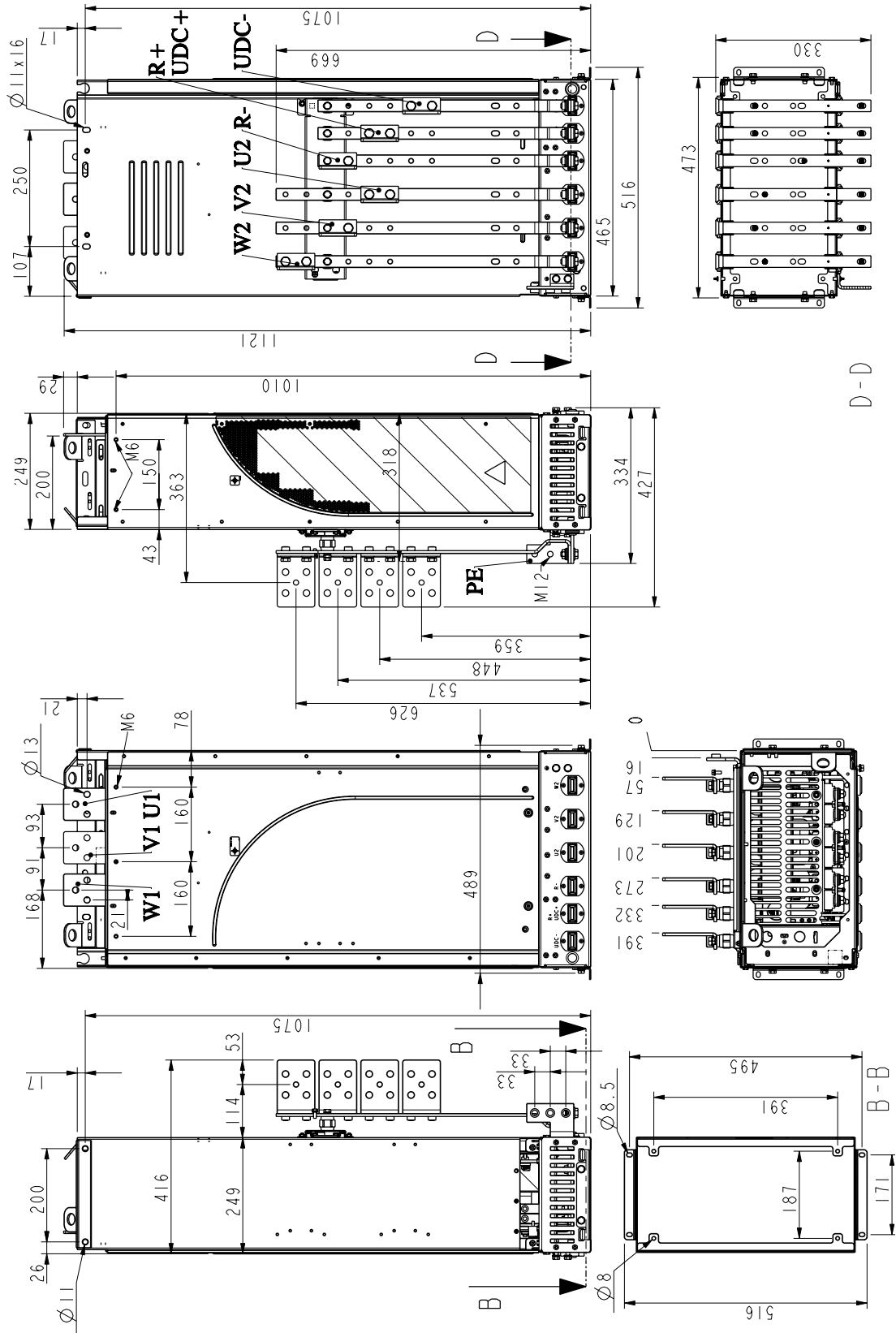


Frame size R7 with bottom exit and top entry and bottom exit shrouds (mm)



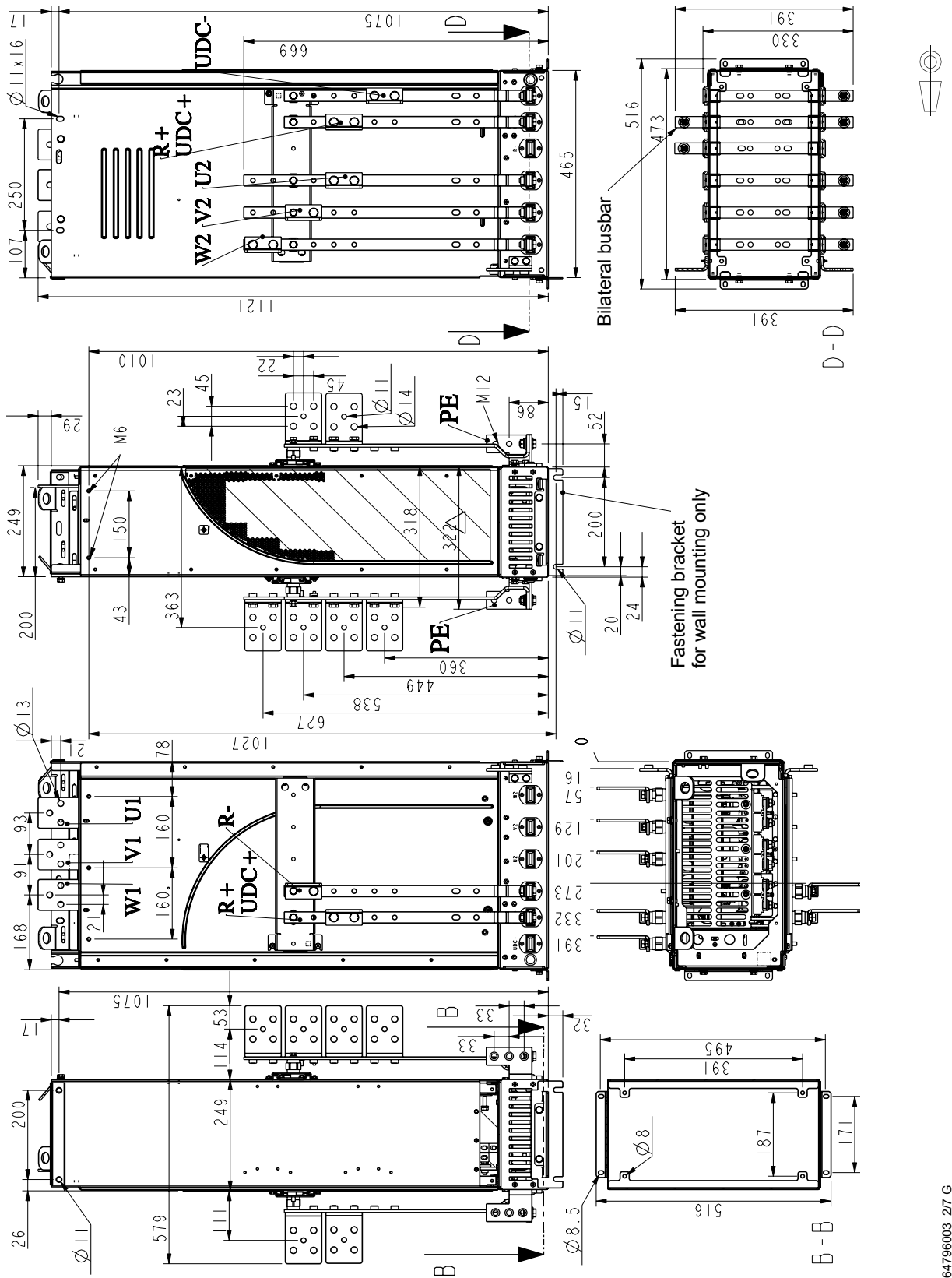
64796003_777 E

Frame size R7 with busbars on the left side (mm)

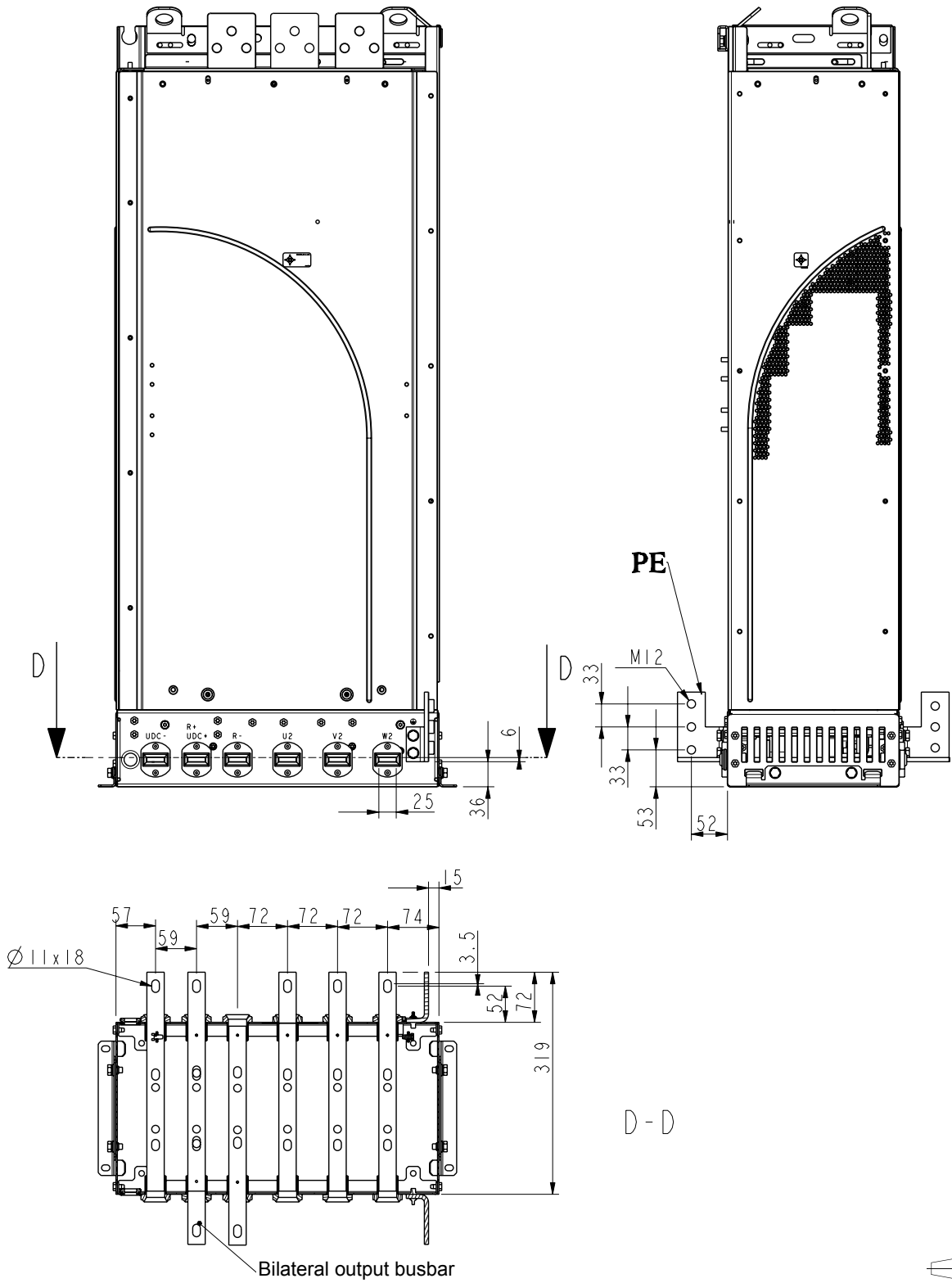


64796003_5/7 G

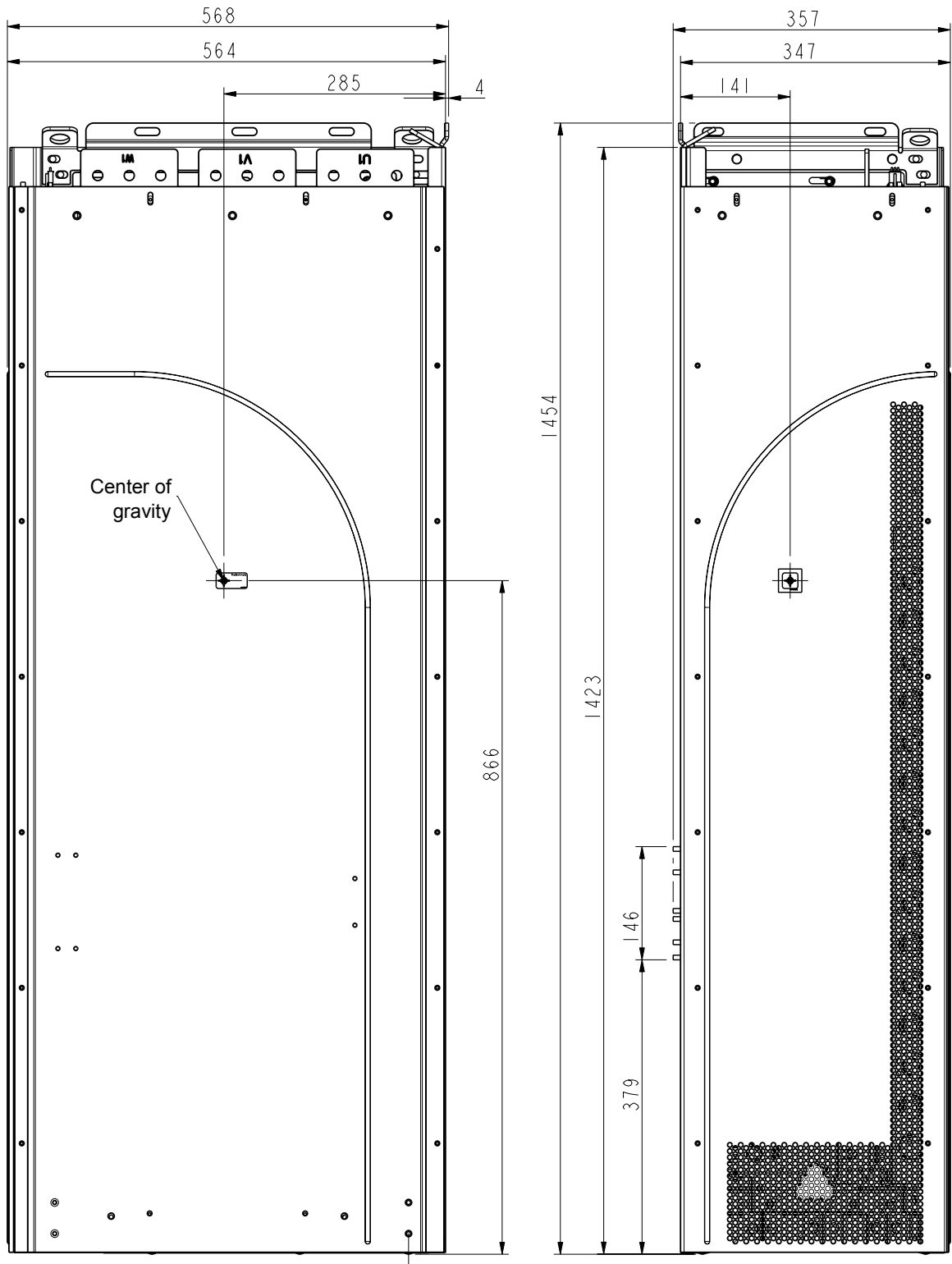
Frame size R7 with DC busbars on both sides (mm)



Frame size R7 pedestal busbars on the long side (mm)

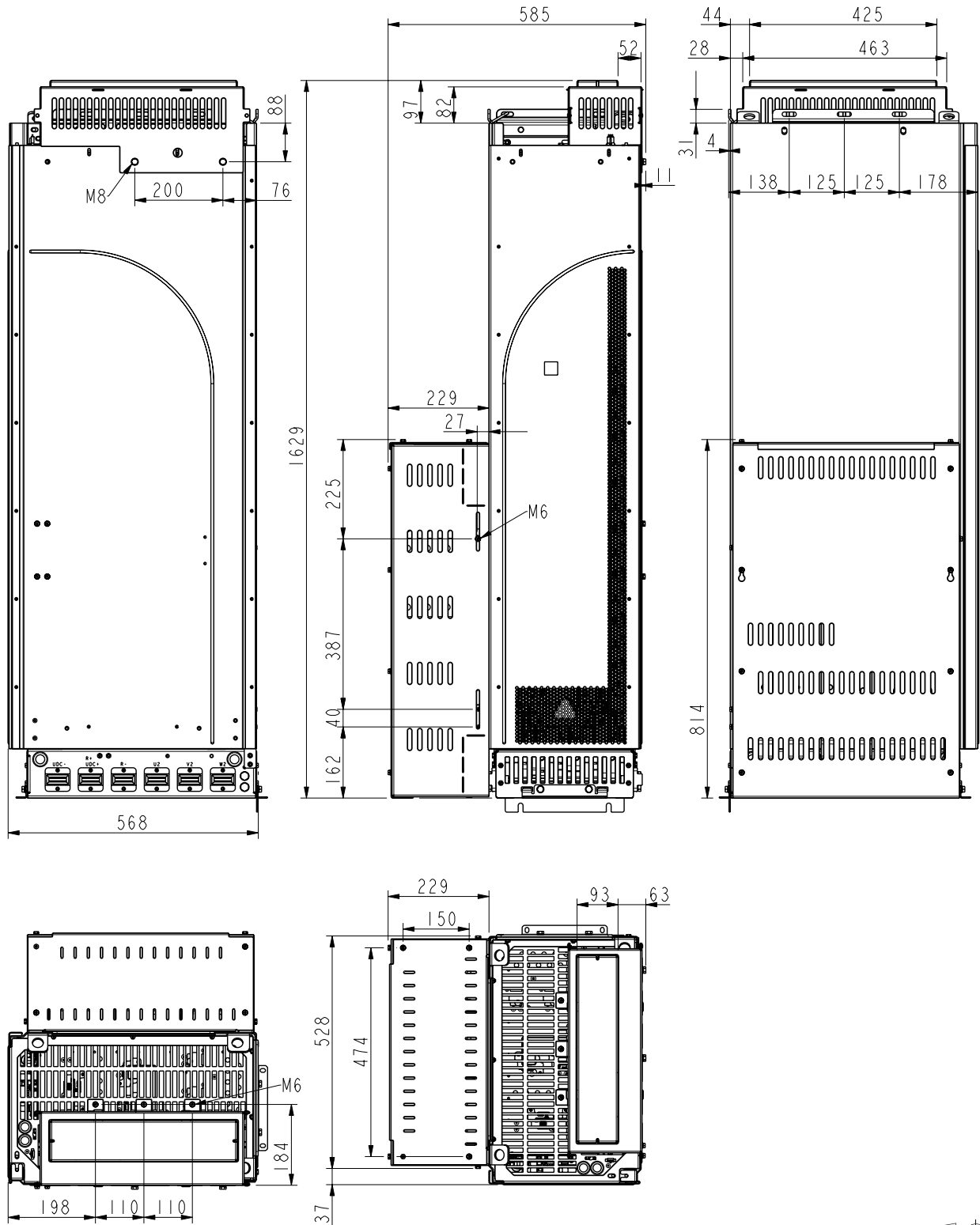


Frame size R8 without pedestal (mm)

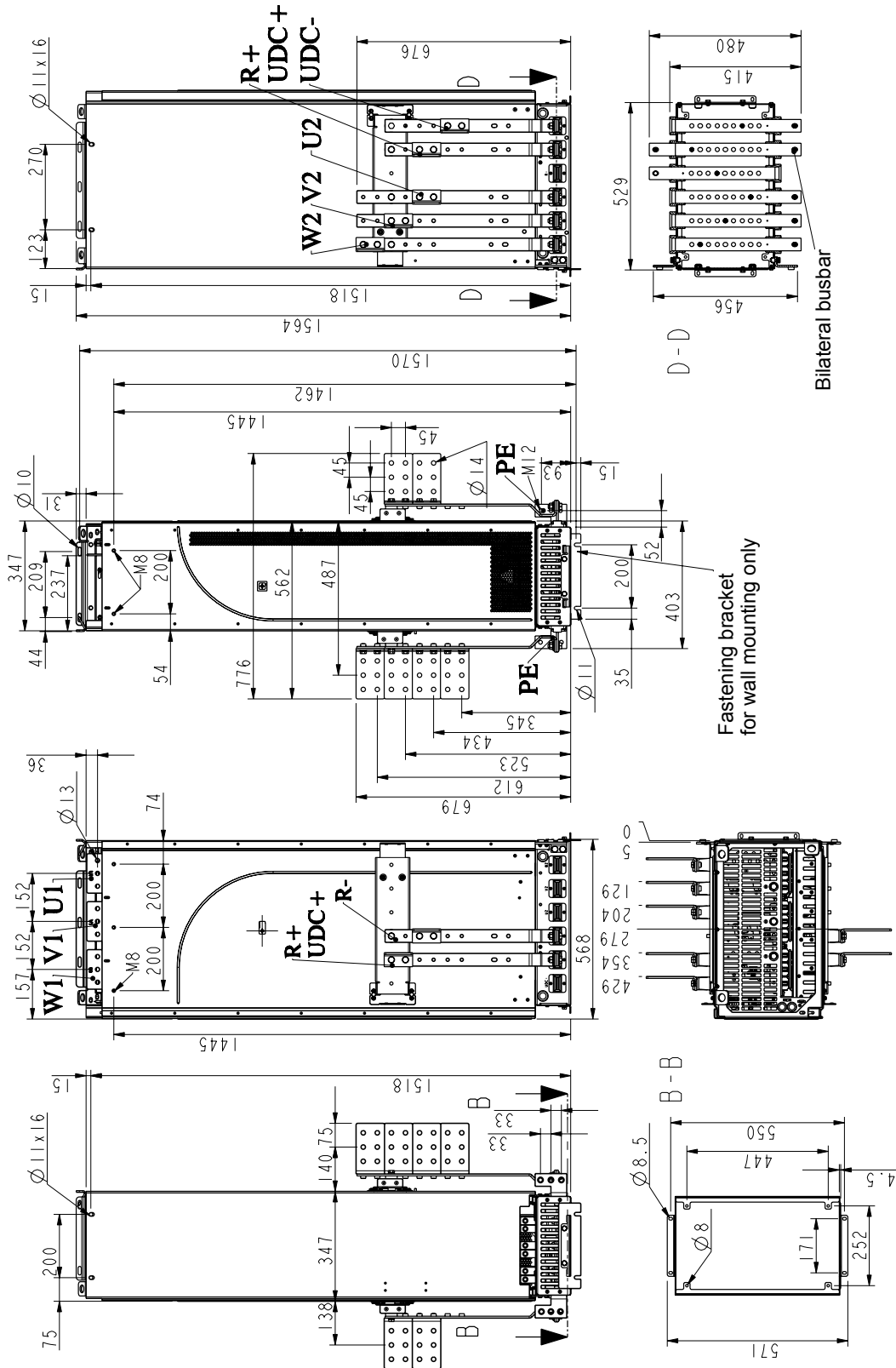


64801082_3/6 E

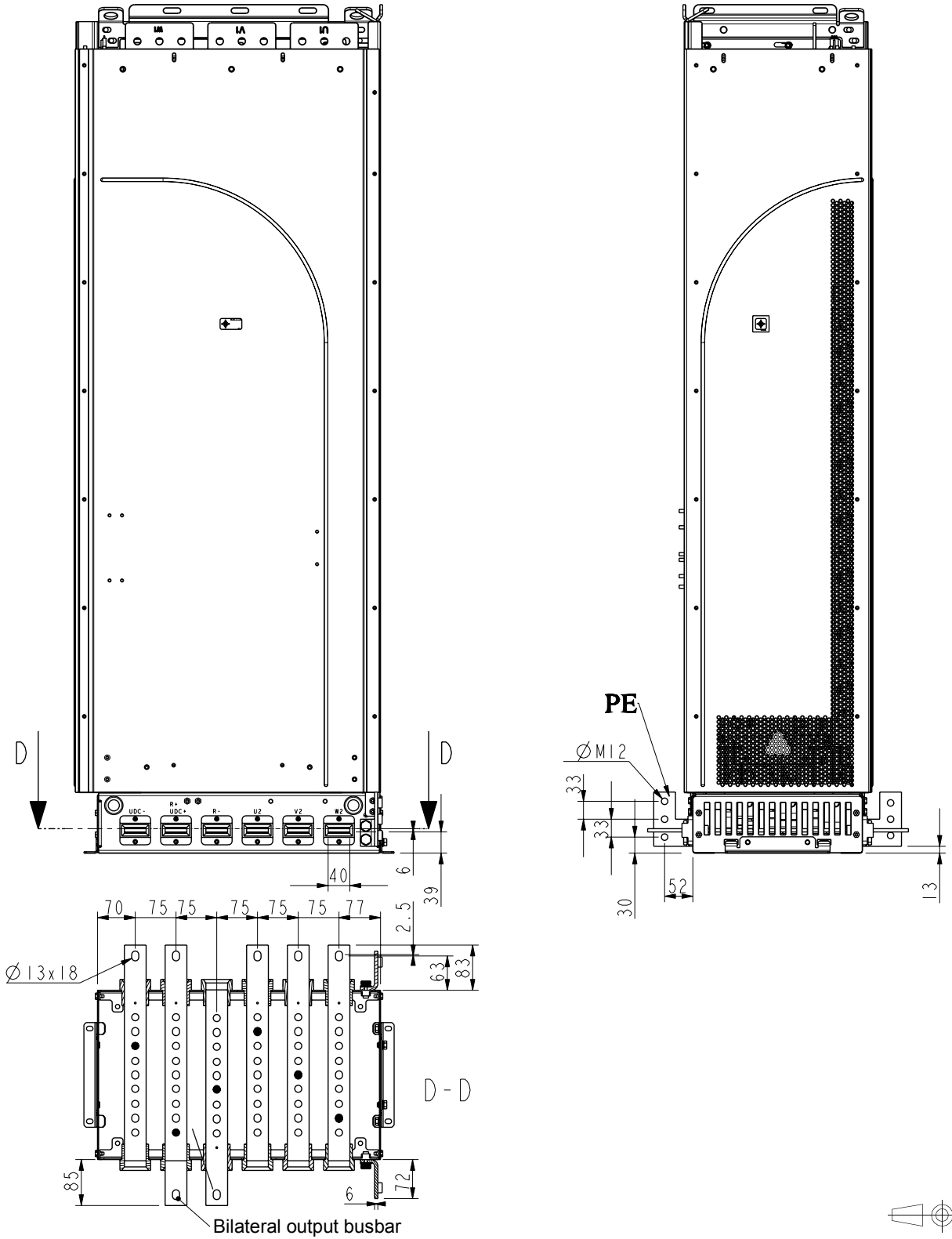
Frame size R8 with top entry and vertical busbar shrouds (mm)



Frame size R8 with busbars on both sides (mm)

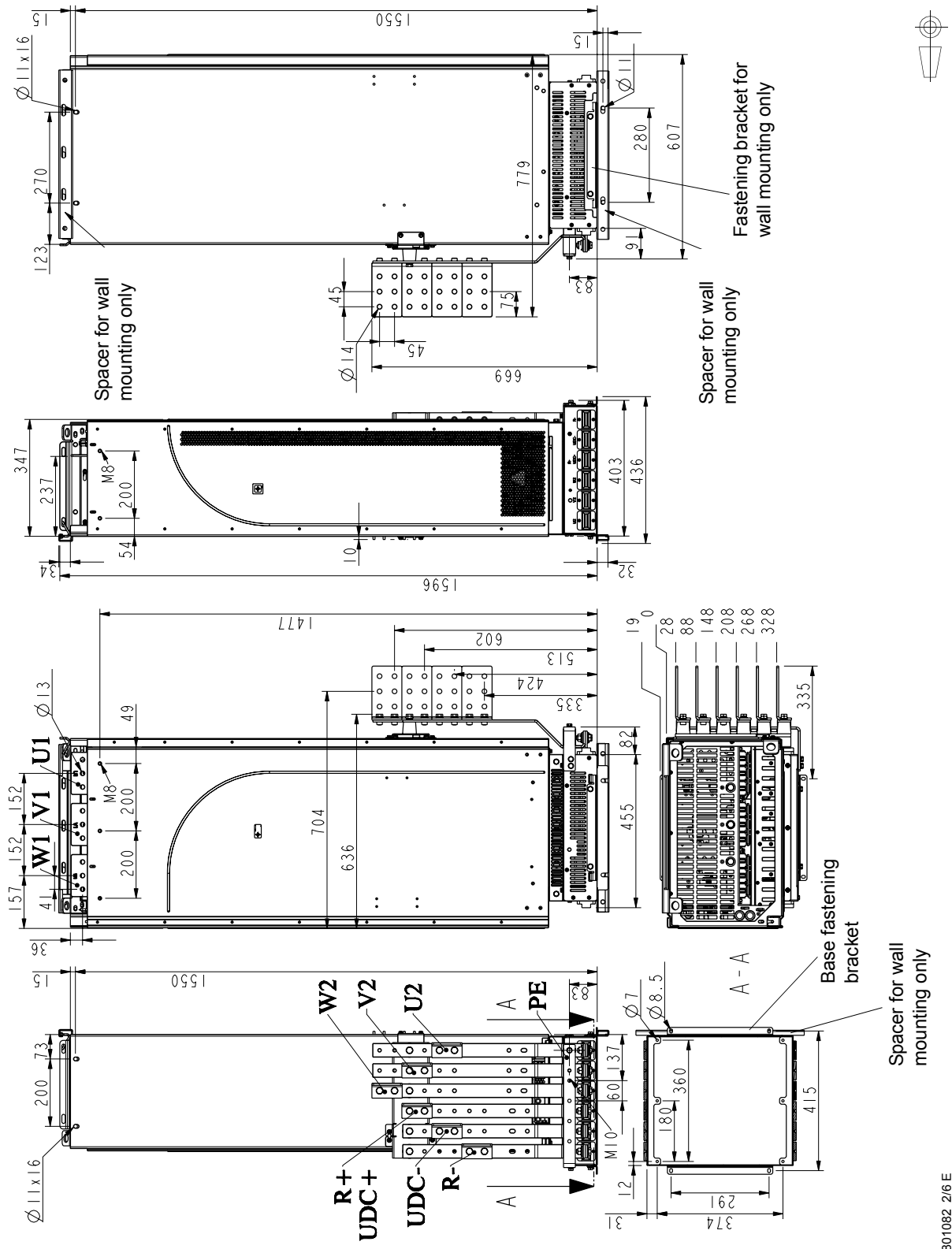


Frame size R8 pedestal busbars on the long side (mm)



64801082_4/6 E

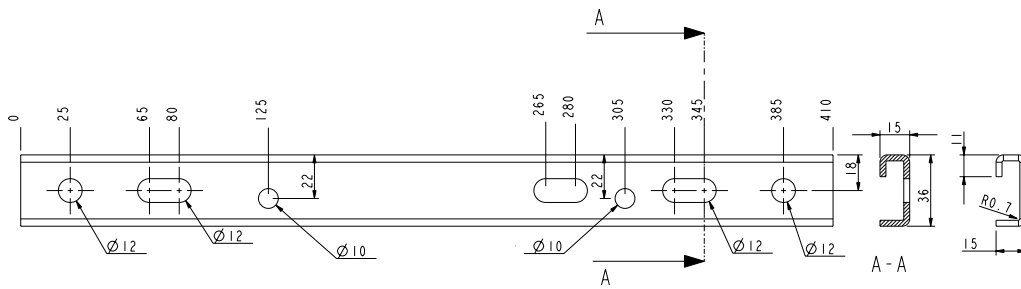
Frame size R8 with busbars on the short side (mm)



64801082_2/6 E

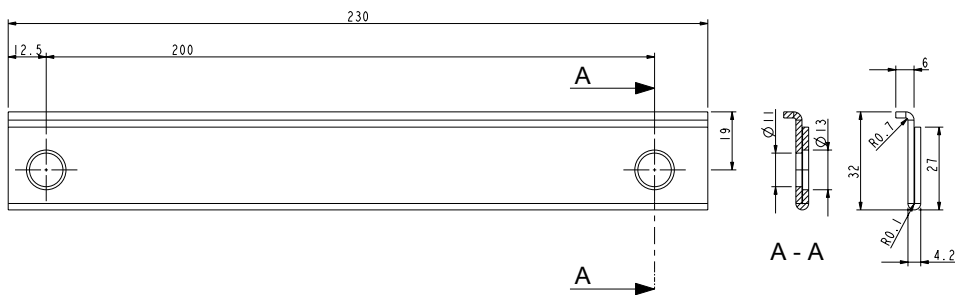
Wall mounting spacers

Frame size R7: long side against wall



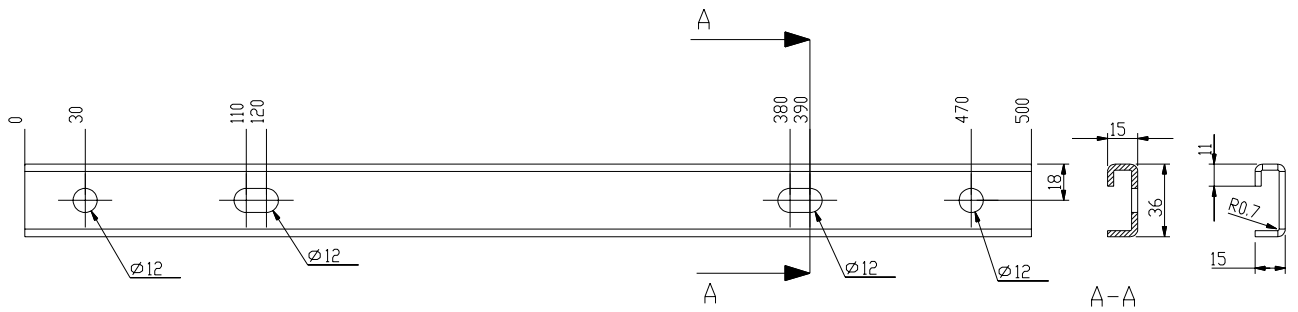
68240808 B

Frame size R7: short side against wall



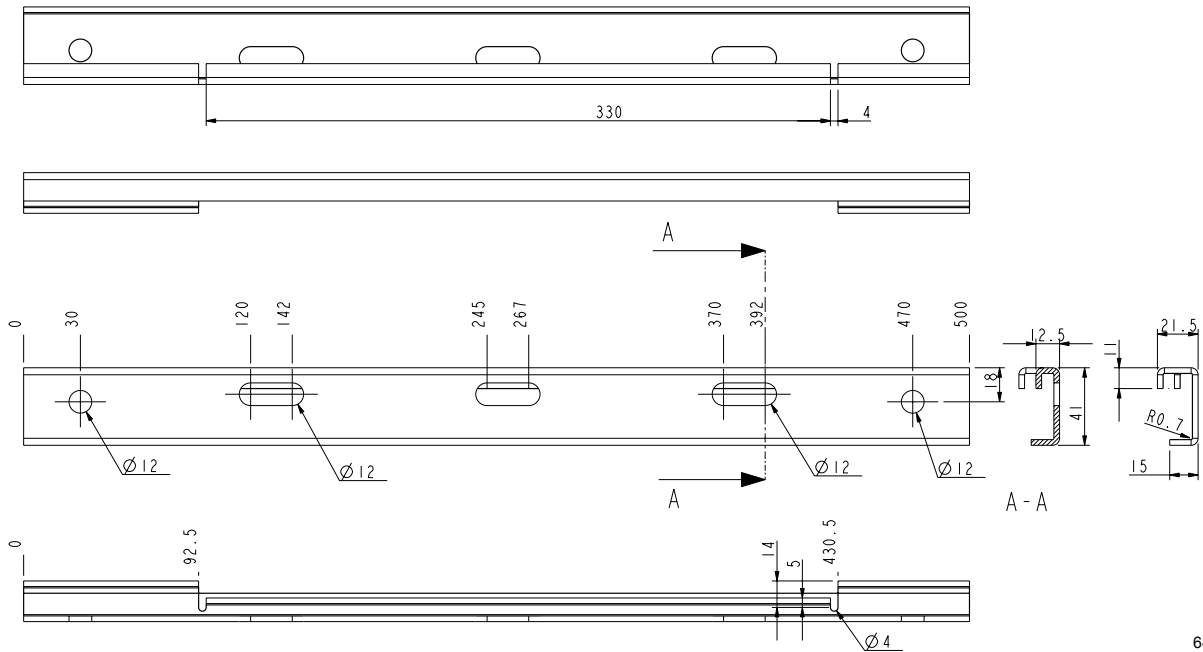
68240166 A

Frame size R8: long side against wall



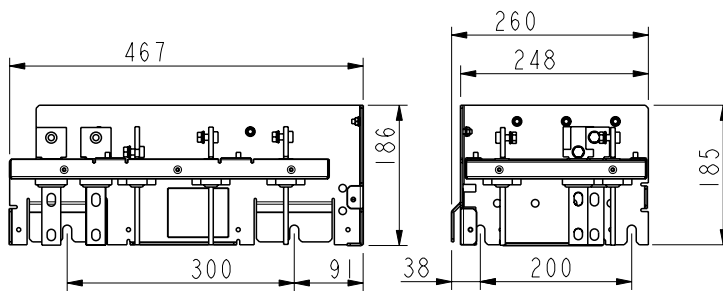
68238021 A

Frame size R8: short side against wall



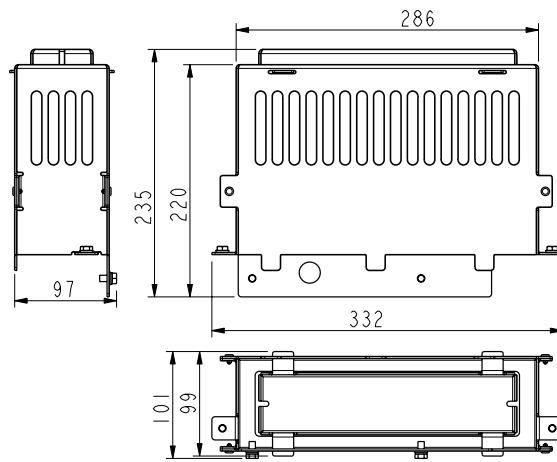
6837927 A

Frame size R7 bottom exit kit (+H352)

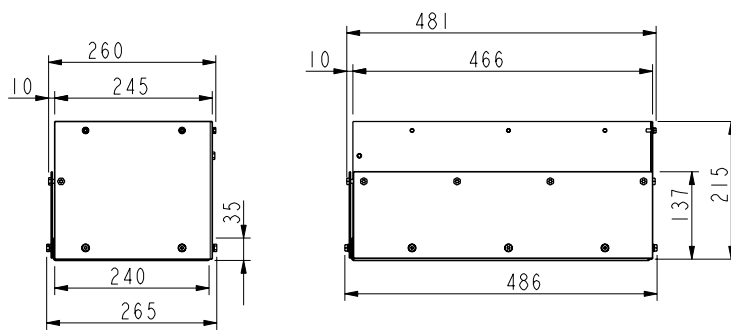


64770306_16/20 E

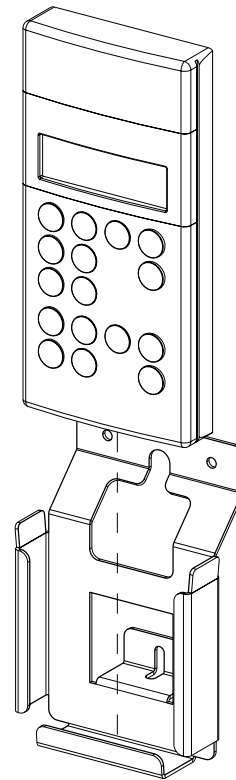
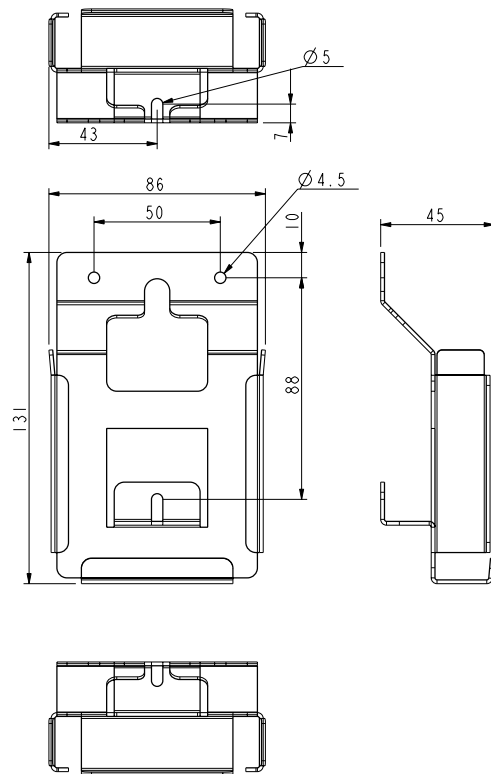
Frame size R7 top entry busbar shroud and bottom exit shroud (+B060)



64770306_18/20 E



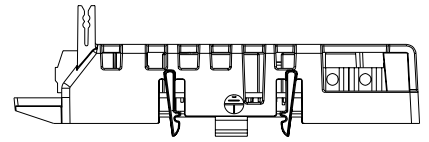
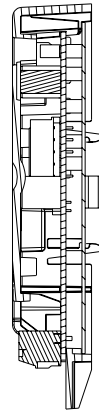
64770306_17/20 E

Control Panel Holder RPMP-21 (+J413)

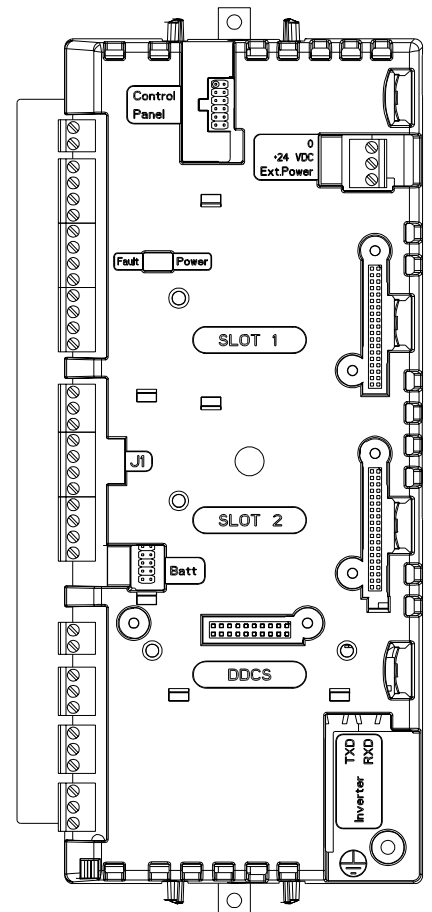
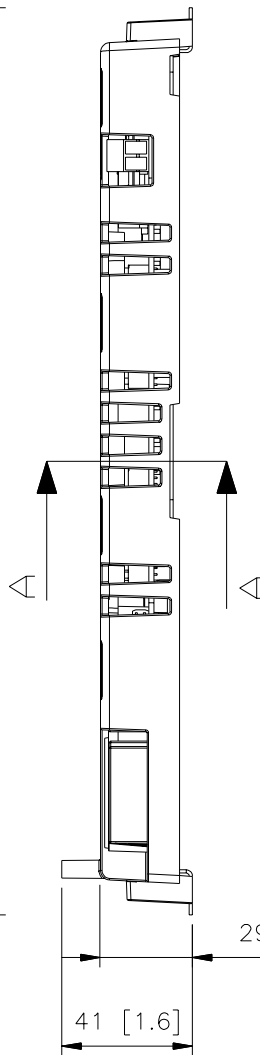
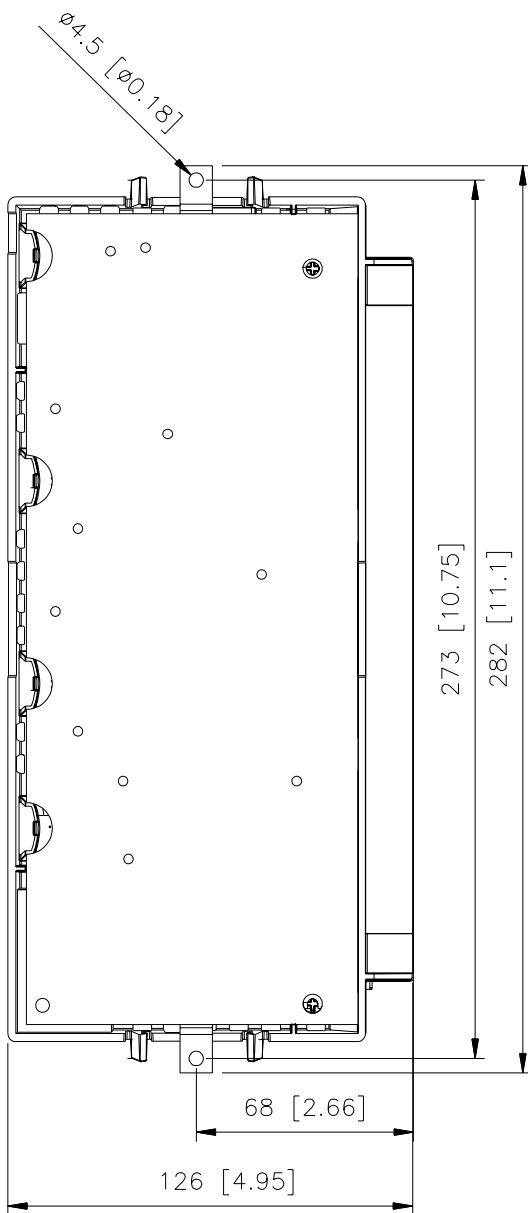
64770306_20/20 E

Drive Control Unit (RDCU-02)

Can be mounted on a DIN rail
(EN 50022, 35 mm x 7.5 mm)



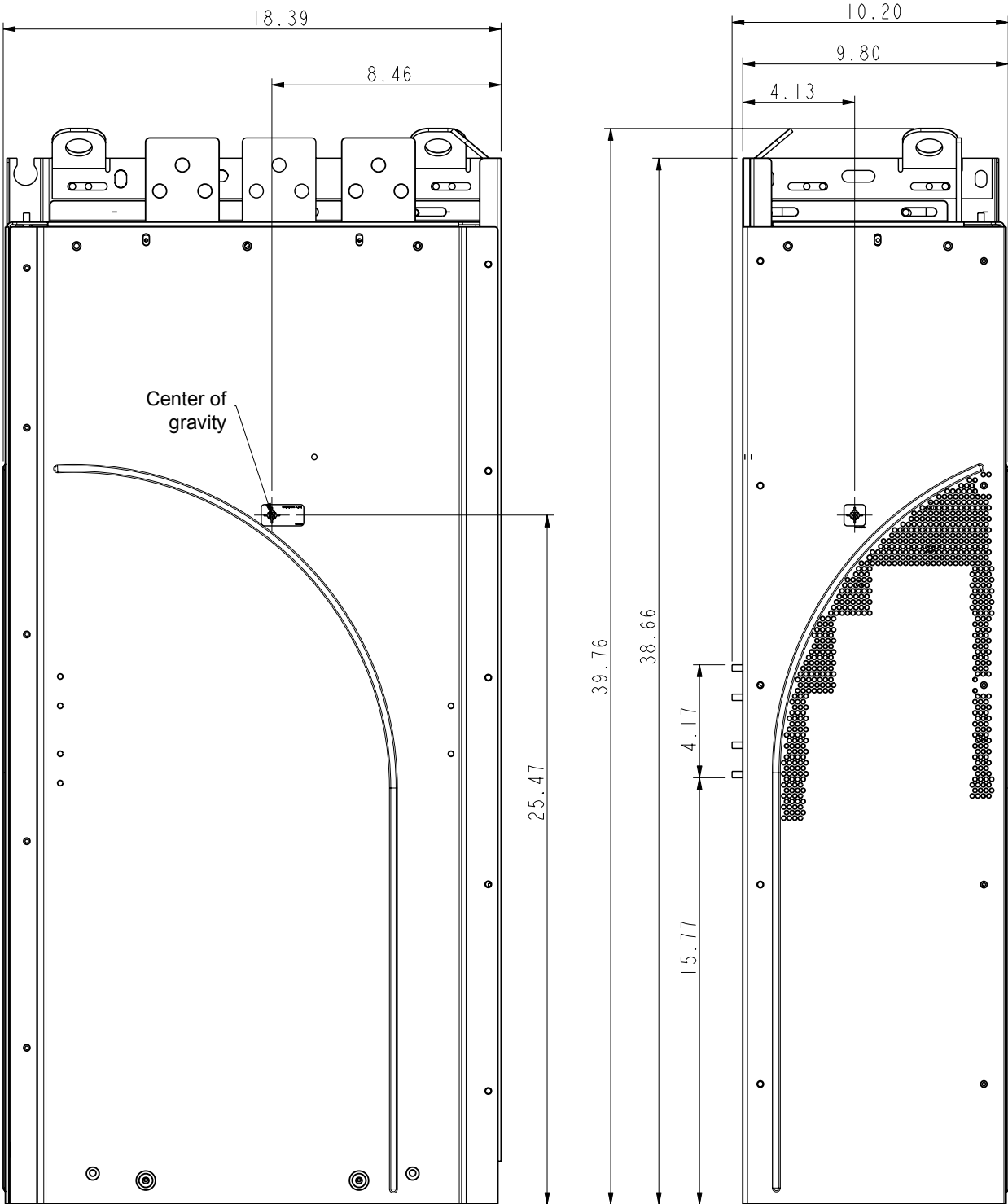
A-A



64675214-B

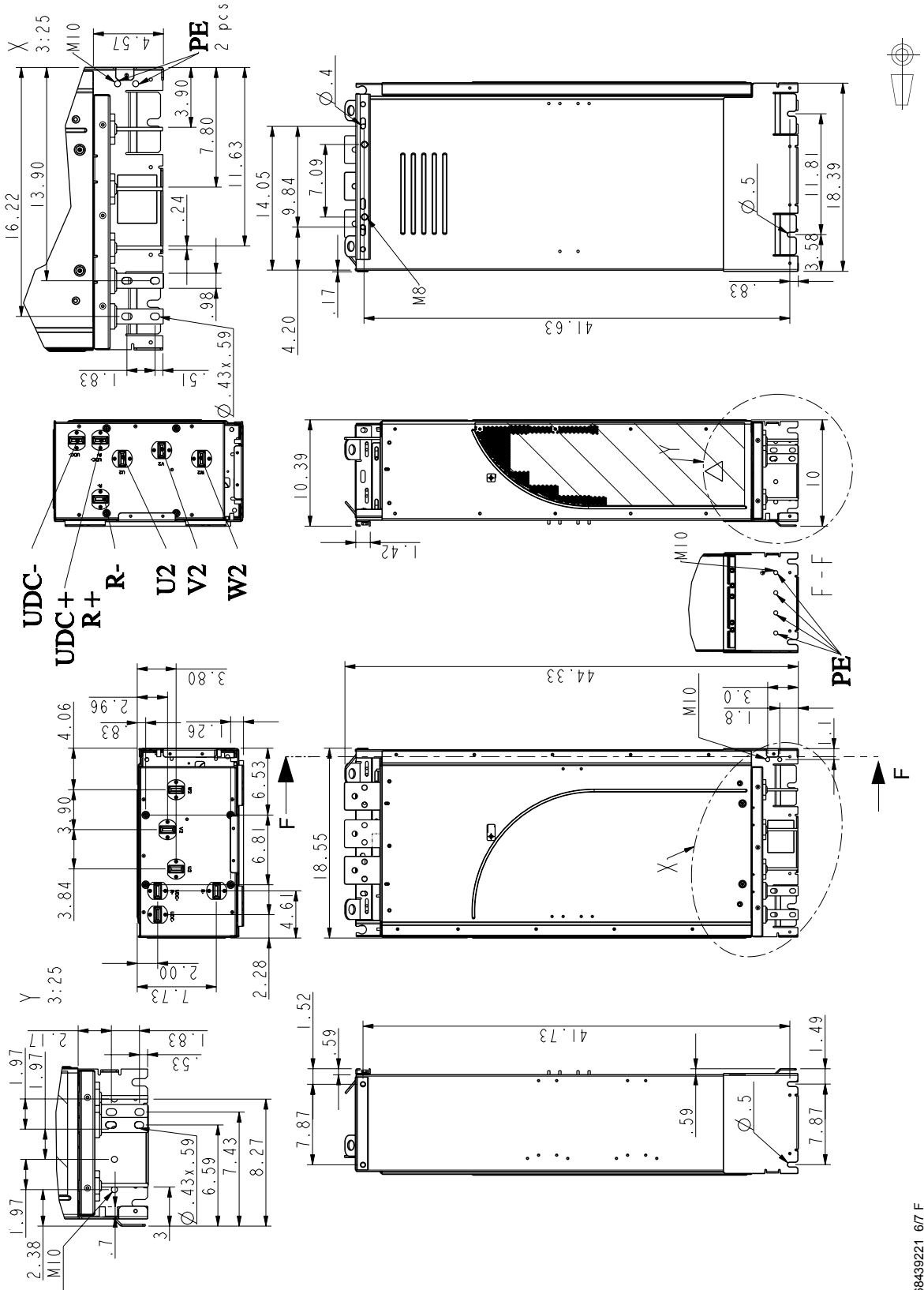
Dimensional drawings (USA)

Frame size R7 without pedestal (inches)



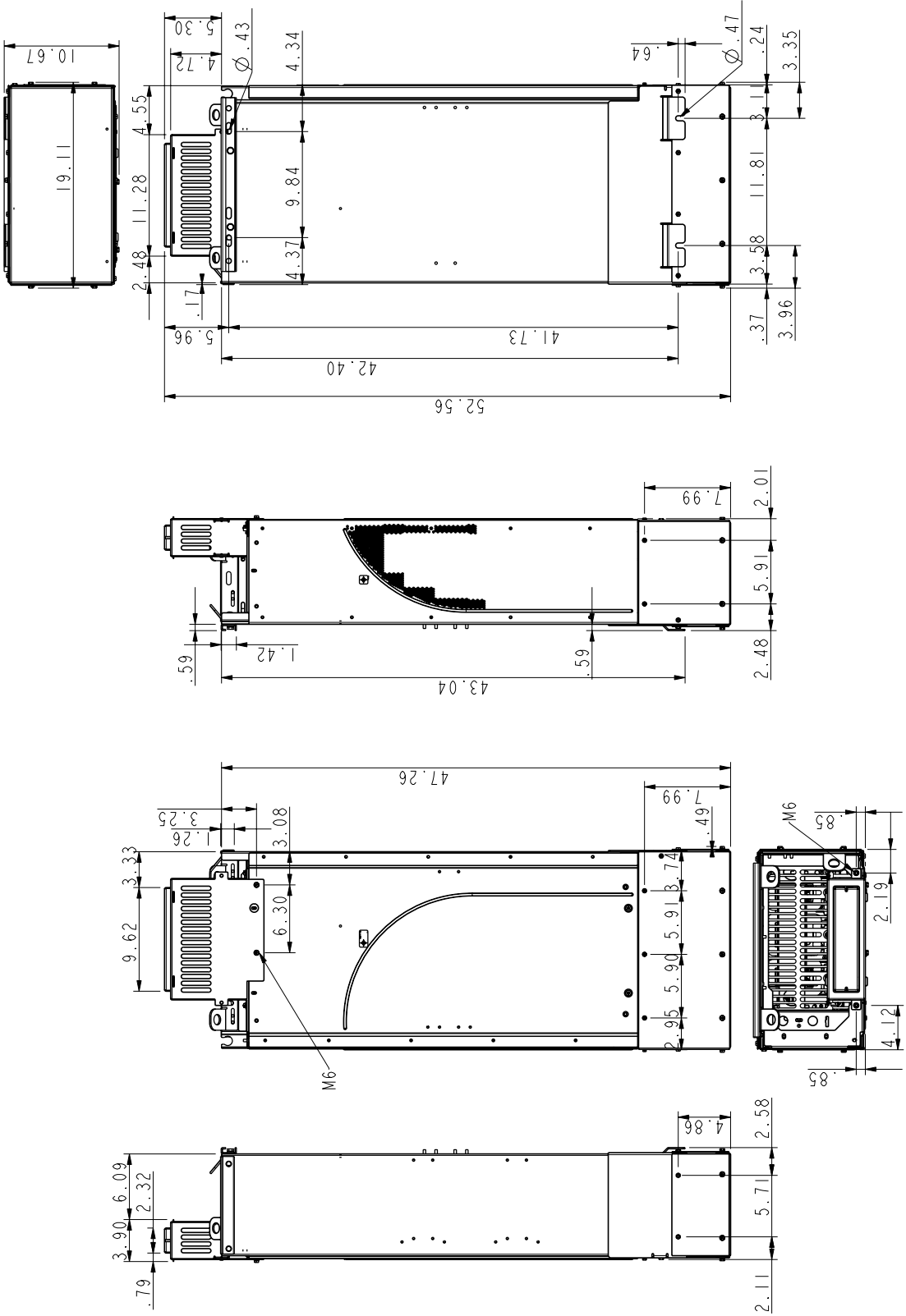
68439221_3/7 A (64796003.asm E)

Frame size R7 with bottom exit (inches)

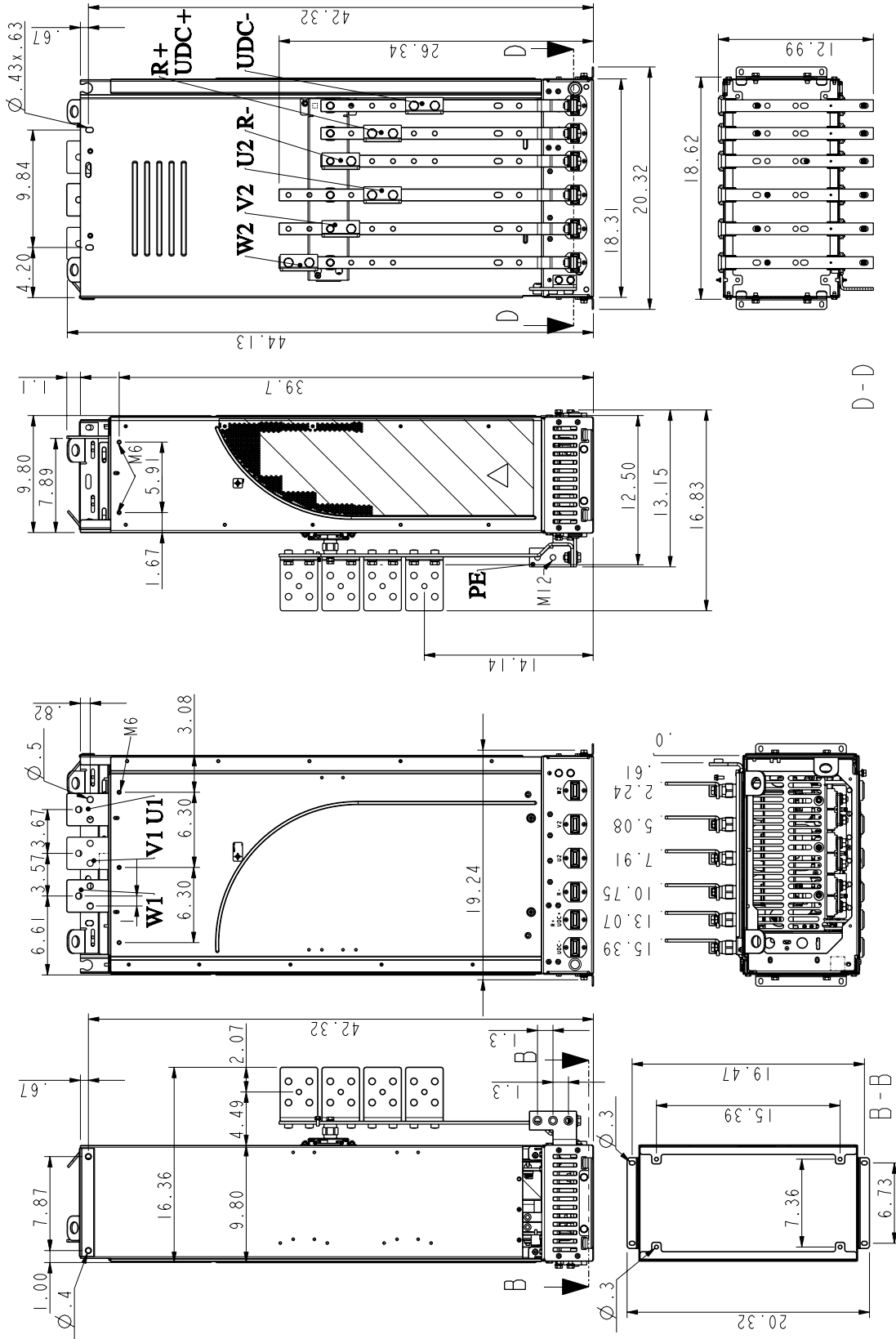


68439221_67 F

Frame size R7 with bottom exit and top entry and bottom exit shrouds (inches)



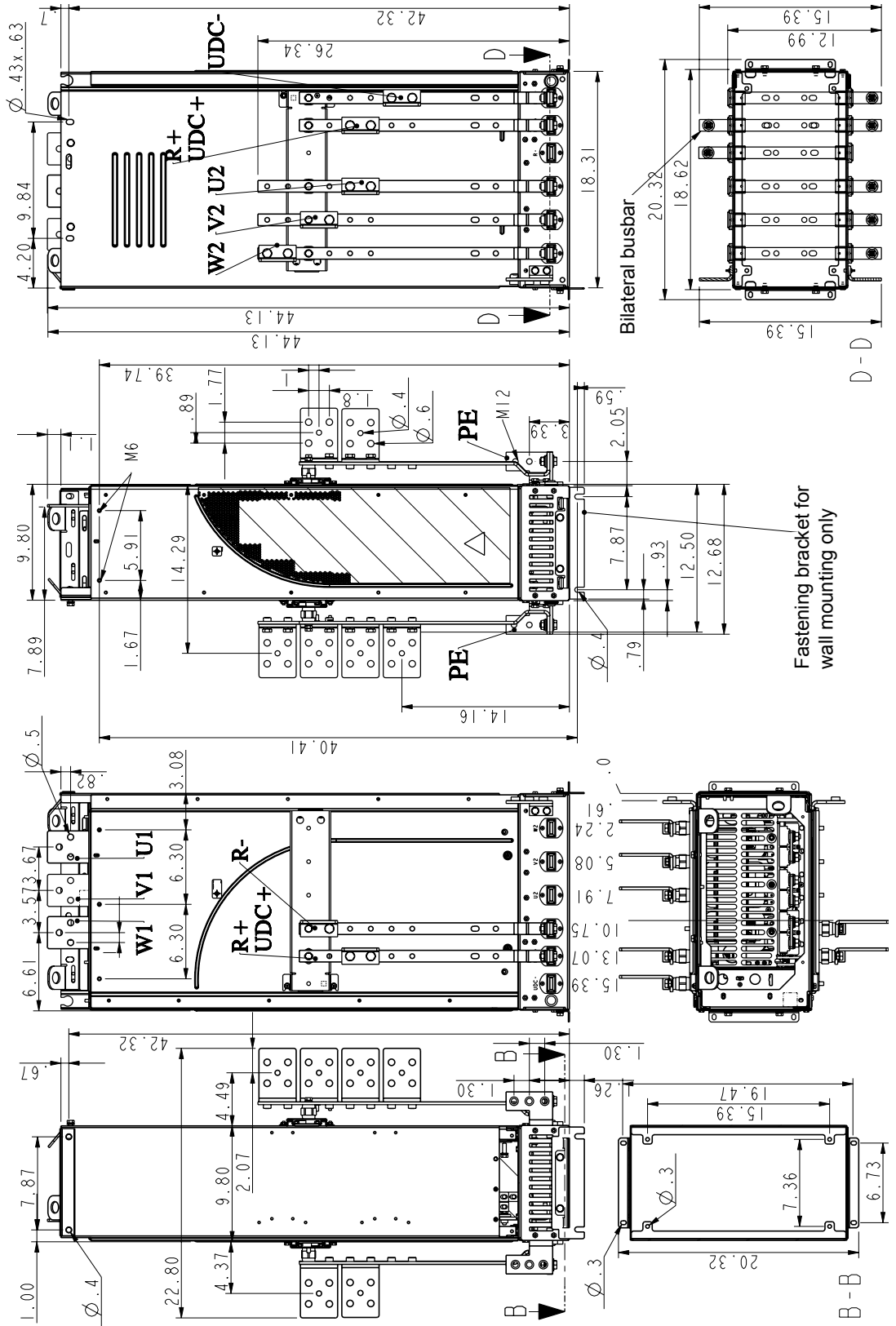
Frame size R7 with busbars on the left side (inches)



D-D

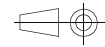
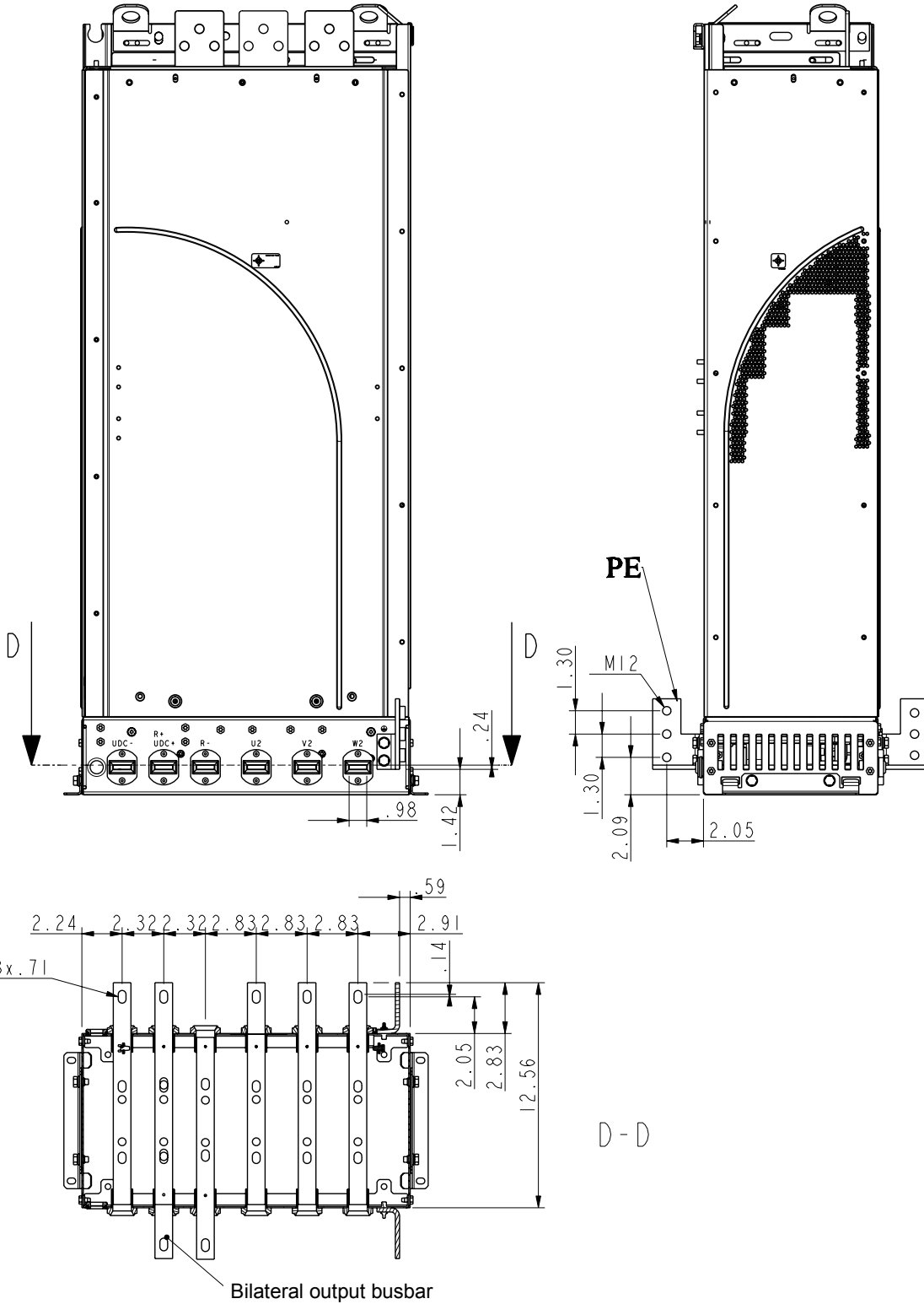
68439221_5/7 F

Frame size R7 with busbars on both sides (inches)



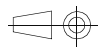
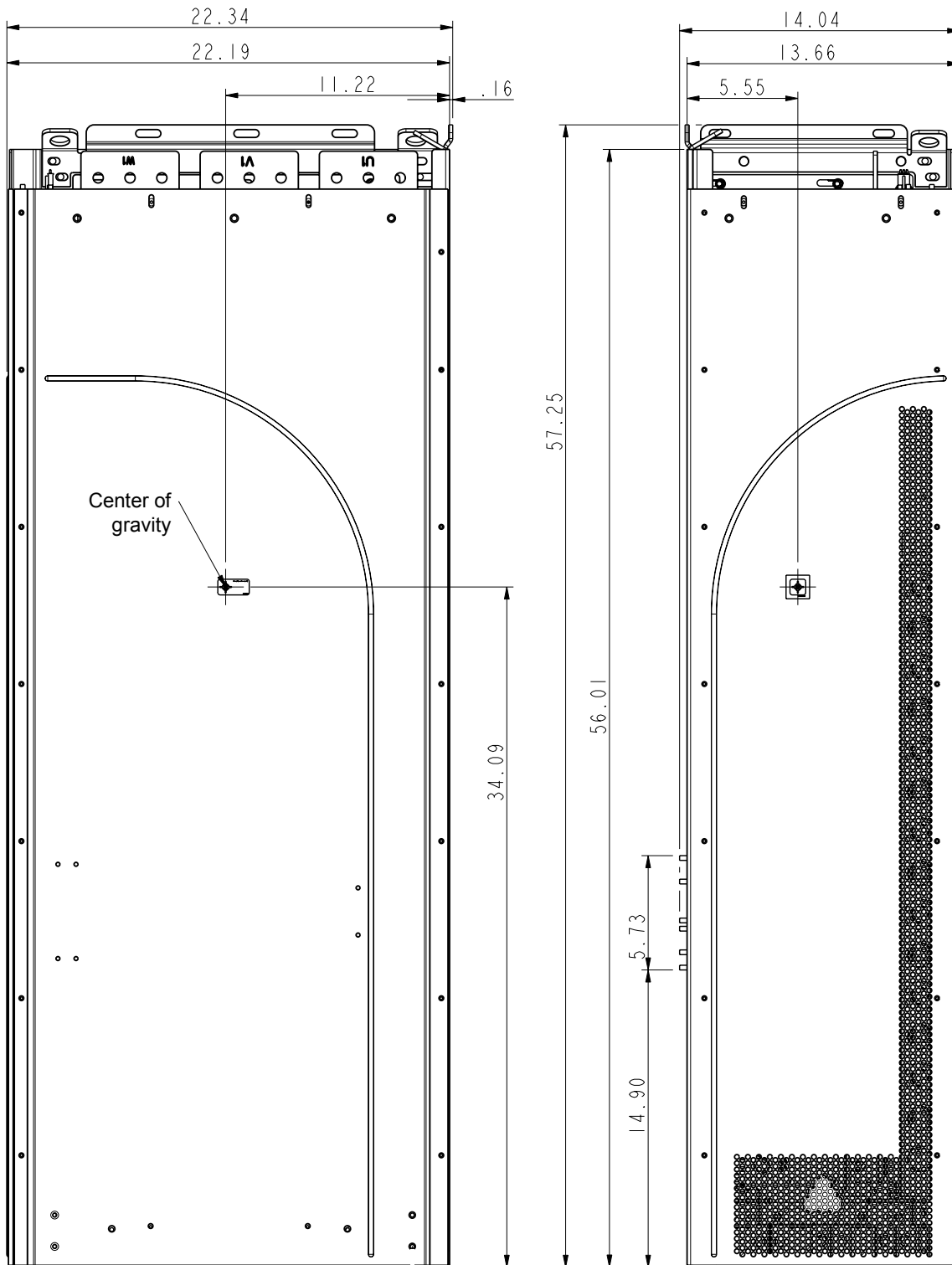
68439221_27 F

Frame size R7 pedestal busbars on the long side (inches)



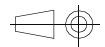
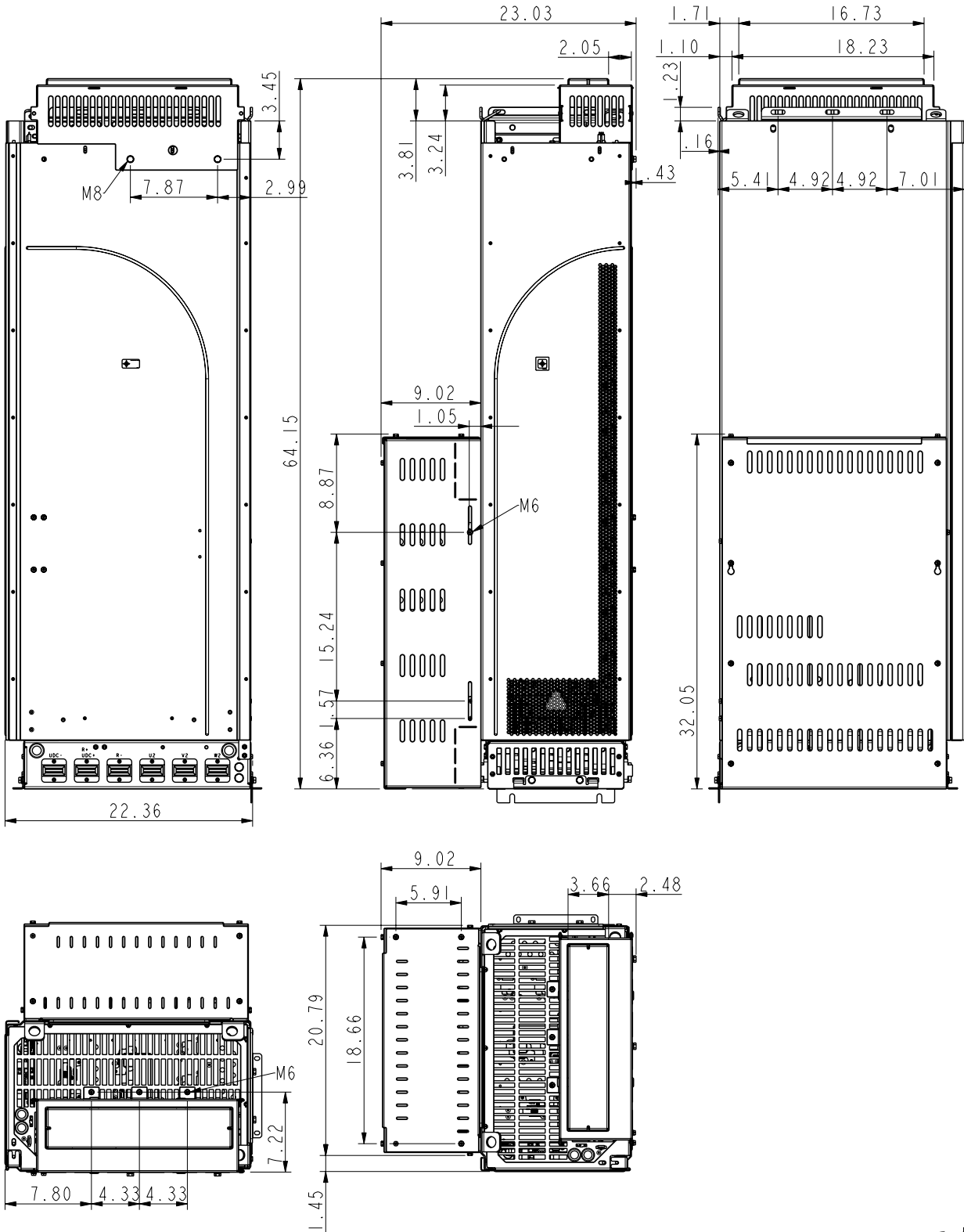
68439221_4/7 A (64796003.asm E)

Frame size R8 without pedestal (inches)



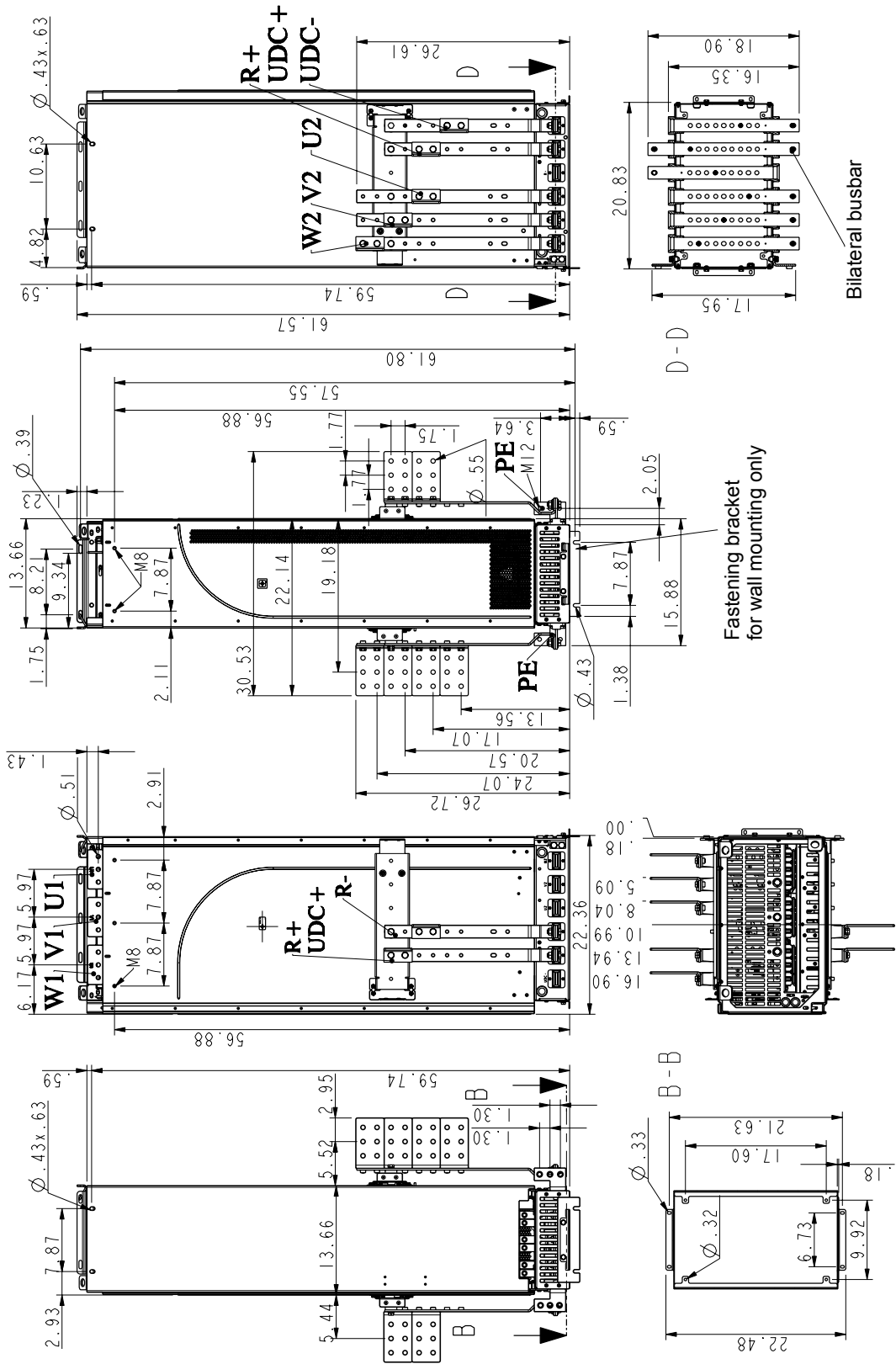
68440513_3/6 A (64801082.asm E)

Frame size R8 with top entry and vertical busbar shrouds (inches)

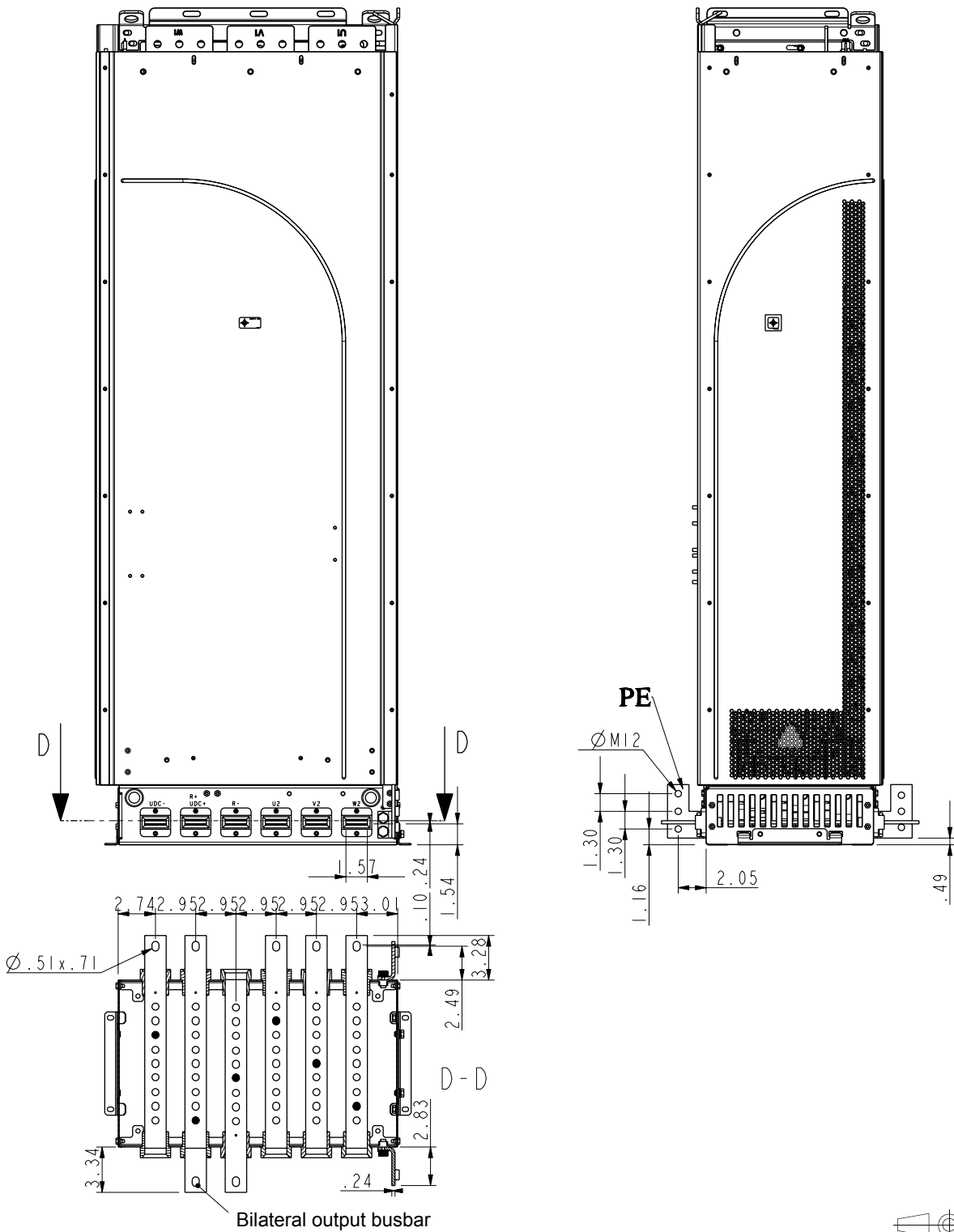


68440513_6/6 A (64801082.asm E)

Frame size R8 with busbars on both sides (inches)



Frame size R8 pedestal busbars on the long side (inches)



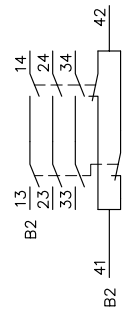
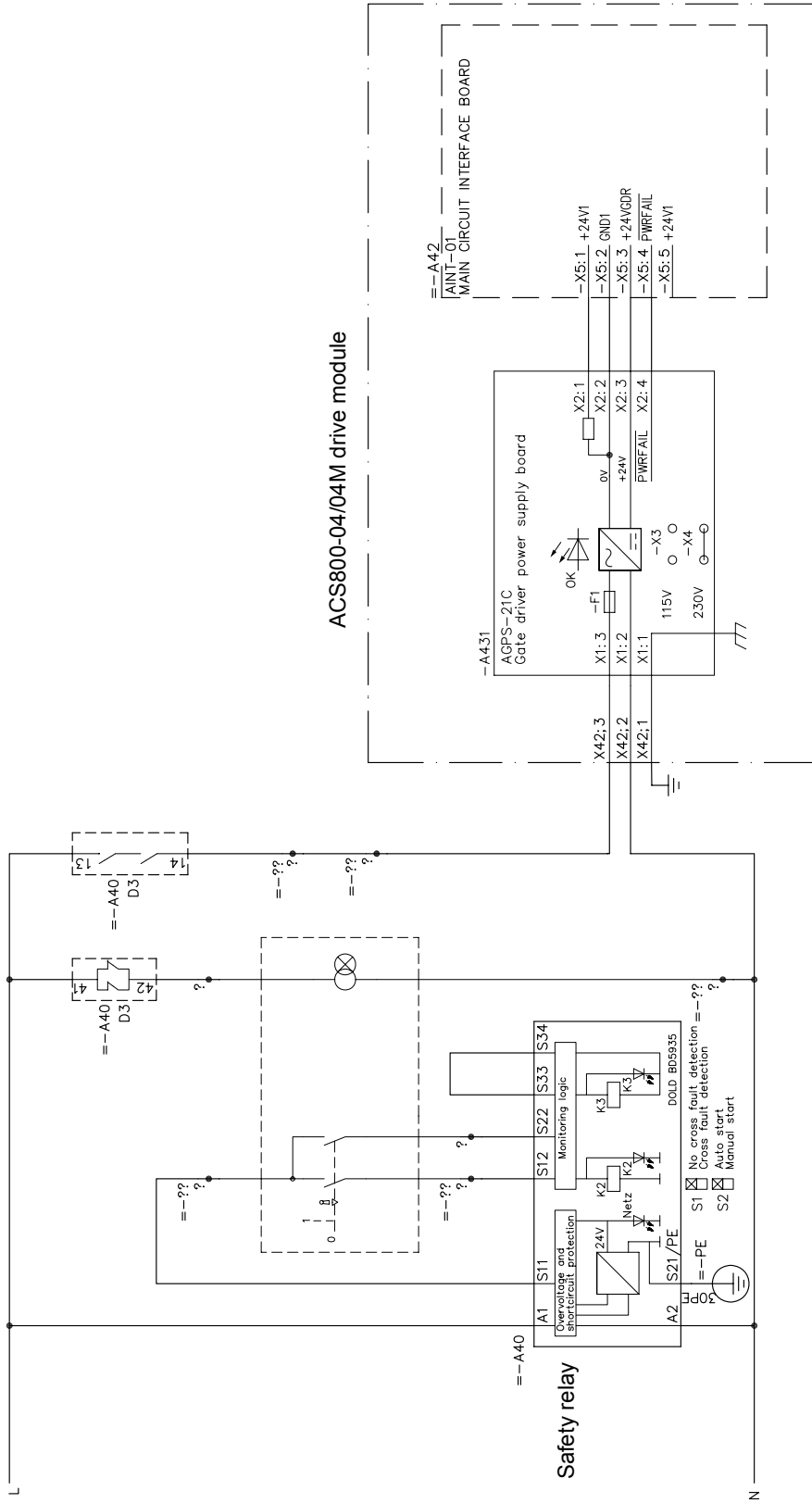
68440513_4/6 A (64801082.asm E)

Circuit diagrams

What this chapter contains

This chapter shows an example circuit diagram for employing the Prevention of Unexpected Start function (+Q950).

Components to be provided and wired by the user

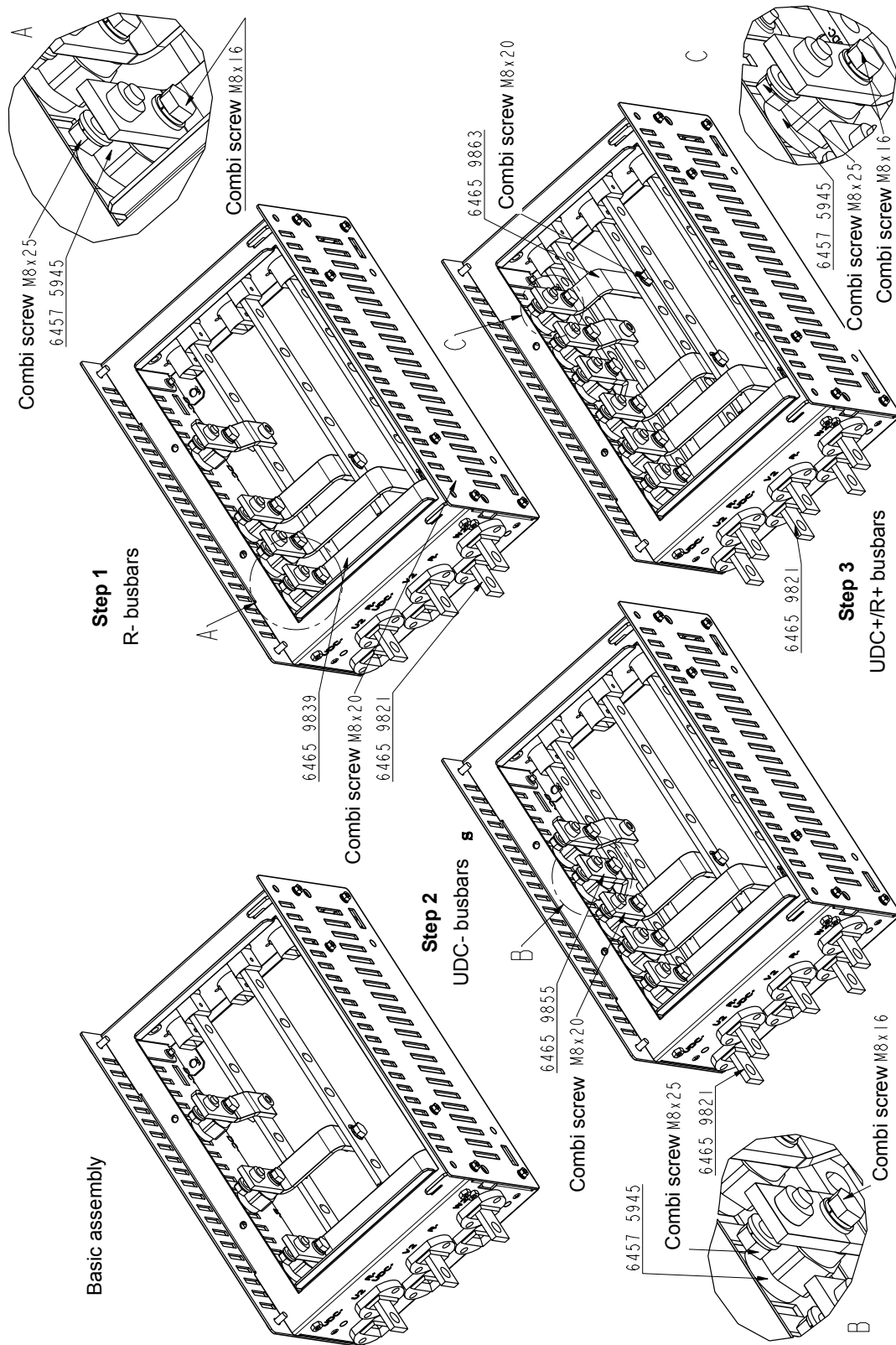


Assembly drawings

What this chapter contains

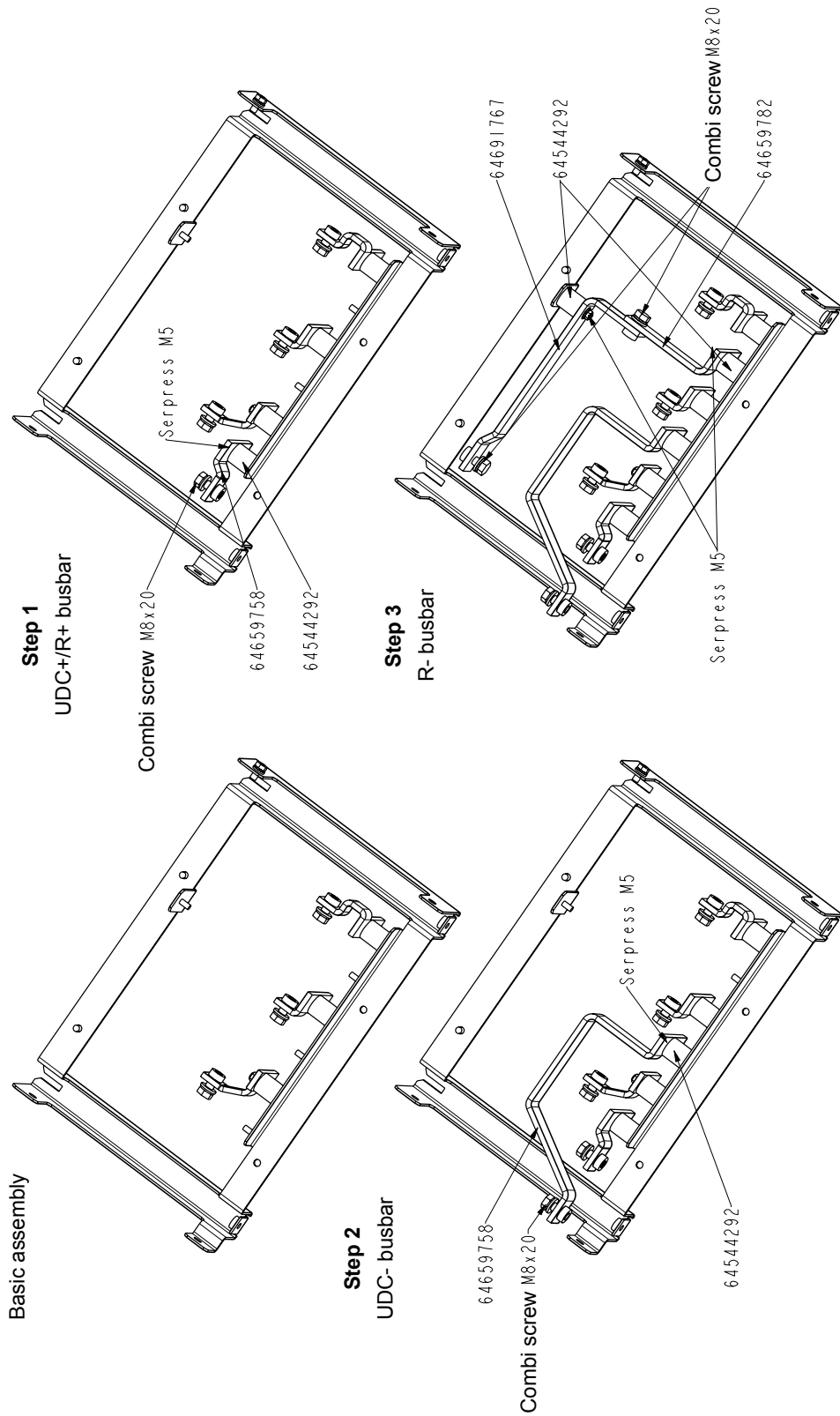
This chapter shows a few step-by-step assembly drawings.

Adding UDC+/R+, UDC- and R- busbars to the pedestal (frame size R7, +H356+H360)



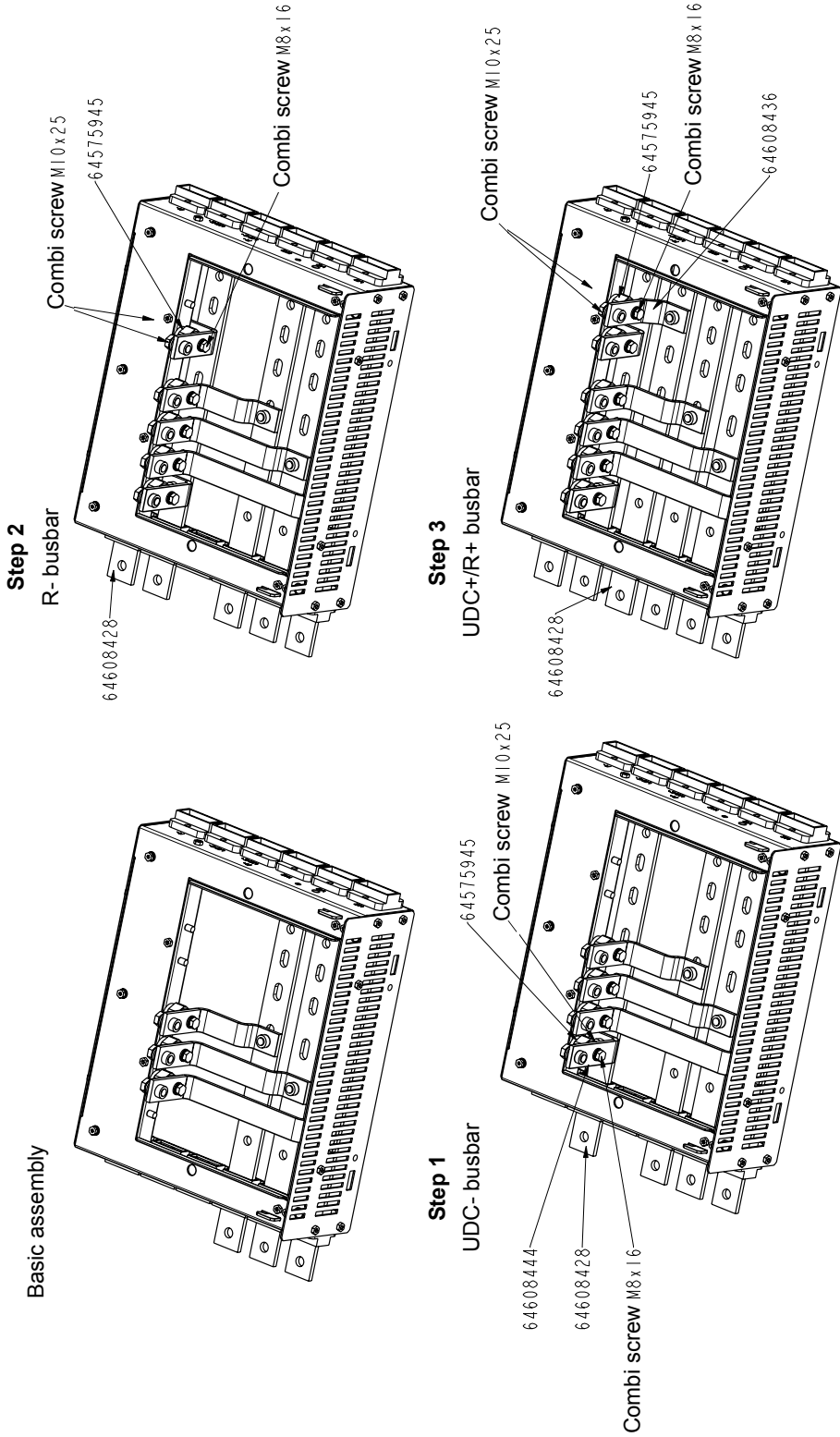
6844855 A

Adding UDC+/R+, UDC- and R- busbars to the adapter (frame size R7, +H356+H360)



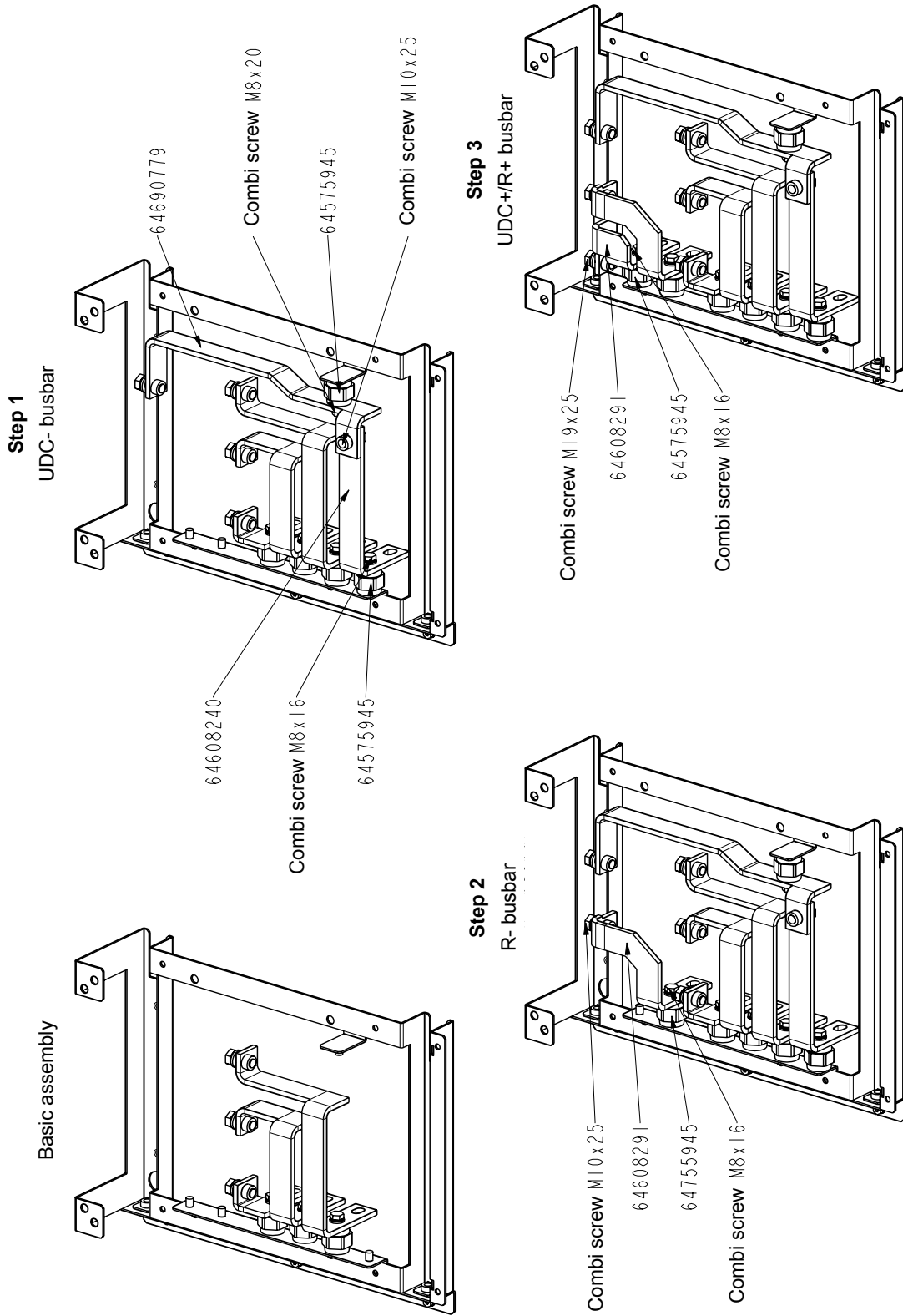
68449359 A

Adding UDC+/R+, UDC- and R- busbars to the pedestal (frame size R8, +H356+H360)



68448905 A

Adding UDC+/R+, UDC- and R- busbars to the adapter (frame size R8, +H356+H360)



68448671 C



3AFE68360323 Rev B EN
EFFECTIVE: 14.2.2008

ABB Oy

AC Drives
P.O. Box 184
FI-00381 HELSINKI
FINLAND
Telephone +358 10 22 11
Fax +358 10 22 22681
Internet www.abb.com

ABB Inc.

Automation Technologies
Drives & Motors
16250 West Glendale Drive
New Berlin, WI 53151
USA
Telephone 262 785-3200
800-HELP-365
Fax 262 780-5135
Internet www.abb.com

ABB Beijing Drive Systems Co. Ltd.

No. 1, Block D, A-10 Jiuxianqiao Beilu
Chaoyang District
Beijing, P.R. China, 100015
Telephone +86 10 5821 7788
Fax +86 10 5821 7618
Internet www.abb.com