

—  
PRODUCT BROCHURE

# **Superstrut® concrete inserts for metal framing**



# Superstrut® concrete inserts for metal framing

Sealing caps eliminate the need for styrene foam fill, making concrete inserts easier to install and better for the environment.

—  
01 The punch-through nail hole is located on 4" centers (at each seal cap).

—  
02 Once the concrete is set and the form is removed, just remove the plastic closure strip.

—  
03 Old-style concrete insert with styrene foam fill

—  
04 New-style concrete insert with sealing caps and plastic closure strip

In the past, installing concrete inserts meant digging a lot of styrene foam filler out of the embedded strut channel before you could insert channel nuts and attach fittings — and then you had to dispose of the foam waste. But not anymore.

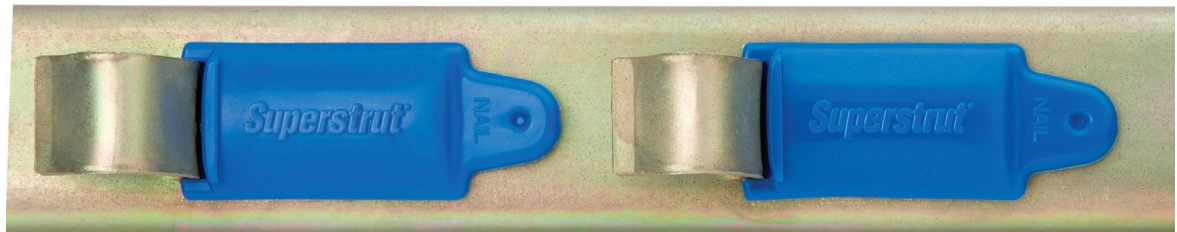
Superstrut concrete inserts from ABB have the slots completely plugged with plastic sealing caps that prevent concrete from seeping into the channel, eliminating the need for filler. Once the concrete is set and the form is removed, just remove the recyclable plastic closure strip, and you're ready to go.

## Features

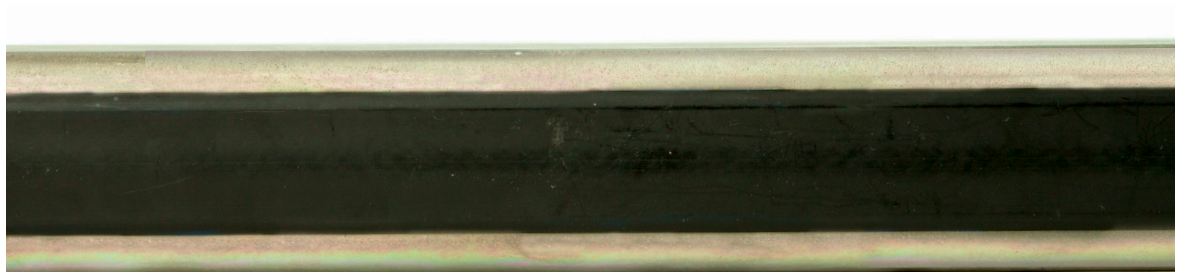
- Eliminates the need for styrene foam fill
- Sealing caps include built-in nail holes for ease of nailing channel to wooden form
- Offers greater psi resistance than previous-generation foam-filled inserts
- Standard GoldGalv® or SilverGalv® channel finish provides superior corrosion resistance compared to pre-galvanized channel
- Available in two heights and two lengths

## Applications

- New commercial construction
- New industrial construction



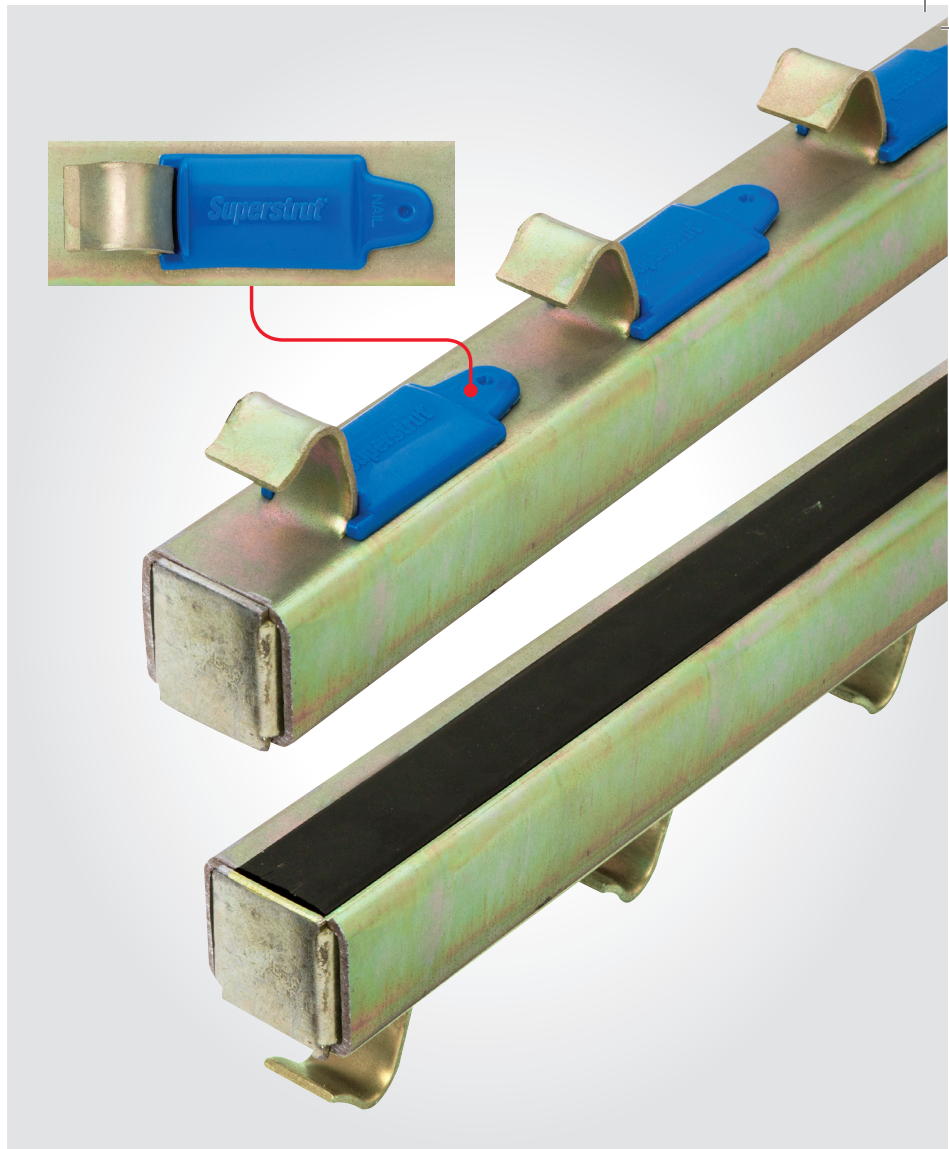
—  
01



—  
02



03



04

**Superstrut concrete insert channel — 12 gauge steel with GoldGalv or SilverGalv finish, with end caps, cover strip and  $\frac{1}{8}$ " slots plugged with sealing caps**

Catalog no.	Description	Inner pkg. qty.	Outer pkg. qty.	UPC no.
B302C 10	1 $\frac{5}{8}$ "W x 1 $\frac{3}{16}$ "H (1 $\frac{15}{16}$ "H overall) x 10'L, GoldGalv	10	360	616013-13447
B302C 20	1 $\frac{5}{8}$ "W x 1 $\frac{3}{16}$ "H (1 $\frac{15}{16}$ "H overall) x 20'L, GoldGalv	10	360	616013-13449
C302C 10	1 $\frac{5}{8}$ "W x 1 $\frac{3}{8}$ "H (2 $\frac{1}{2}$ "H overall) x 10'L, GoldGalv	10	360	616013-13446
C302C 20	1 $\frac{5}{8}$ "W x 1 $\frac{3}{8}$ "H (2 $\frac{1}{2}$ "H overall) x 20'L, GoldGalv	10	360	616013-13448
B302C 10EG	1 $\frac{5}{8}$ "W x 1 $\frac{3}{16}$ "H (2 $\frac{1}{2}$ "H overall) x 10'L, SilverGalv	10	360	616013-13479
C302C 10EG	1 $\frac{5}{8}$ "W x 1 $\frac{3}{16}$ "H (1 $\frac{15}{16}$ "H overall) x 10'L, SilverGalv	10	360	616013-13478

#### Accessories

Catalog no.	Description	Inner pkg. qty.	Outer pkg. qty.	UPC no.
<b>End caps</b>				
B804C	End cap for B concrete insert, GoldGalv	1	1	616013-13487
C804C	End cap for C concrete insert, GoldGalv	1	1	616013-13482
B804CEG	End cap for B concrete insert, SilverGalv	1	1	616013-13488
C804CEG	End cap for C concrete insert, SilverGalv	1	1	616013-13484
<b>Cover strip</b>				
460-10TB	10' Removable plastic closure strip	1	1	616013-28712

Note: Two end caps and one closure strip are included with each Superstrut concrete insert channel. More end caps and closure strips may be purchased separately.



---

**ABB Installation Products Inc.**

Electrification business

860 Ridge Lake Blvd.

Memphis, TN 38120

**[tnb.abb.com](http://tnb.abb.com)**