



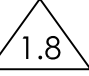
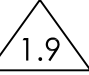
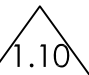



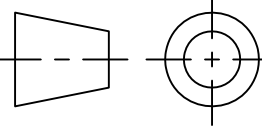
THIS IS CONFIDENTIAL AND PROPRIETARY INFORMATION BELONGING TO ABB INC.

| REVISIONS | | | | | |
|-----------|--------|----------|----------|----------|------------|
| REV | ACTION | DRAWN | CHECKED | APPROVED | DATE |
| AA | L22081 | B. LEMEN | D. ADAMS | D. ADAMS | 10/04/08 |
| AB | D34877 | B.LEMEN | D.ADAMS | D.ADAMS | 14/08/21 |
| AC | D37118 | B.BOWMAN | D.ADAMS | D.ADAMS | 2016/10/31 |

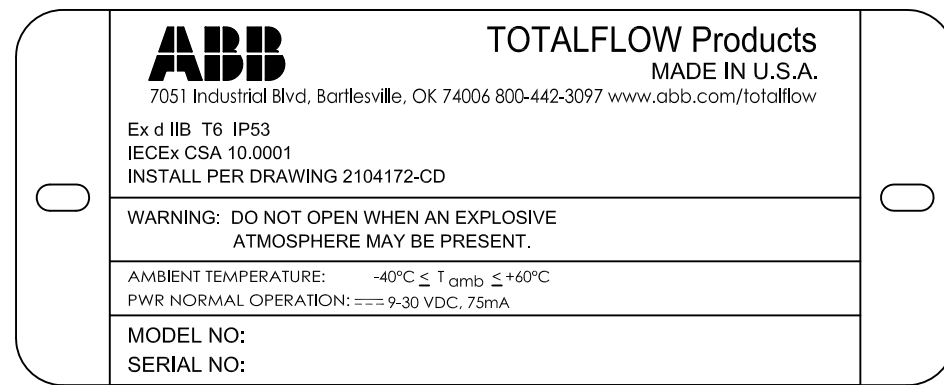
1.0 NOTES:

- 1.1 IN ORDER TO COMPLY WITH CERTIFICATION FOR POTENTIALLY EXPLOSIVE ATMOSPHERES, THOSE ITEMS LISTED MUST BE USED ONLY AS SHOWN.
- 1.2 WARNING: EXPLOSION HAZARD - DO NOT REMOVE COVERS UNLESS THE AREA IS KNOWN TO BE NON-HAZARDOUS.
- 1.3 WARNING: THE 1/2 INCH NPT OPENING IN THE BOTTOM SIDE OF THE ENCLOSURE IS FOR USE WITH APPROVED NPT PLUG OR BREATHER/DRAIN ONLY.
- 1.4  WARNING - EXPLOSION HAZARD - DO NOT REMOVE COVER OR USE CONNECTOR UNLESS THE AREA IS KNOWN TO BE NON-HAZARDOUS.
- 1.5  DEDICATED EARTHING ASSEMBLY, CONNECT TO SITE GROUNDING ELECTRODE.
- 1.6  WIRING BY FIELD PERSONNEL.
- 1.7  3/4 INCH NPT AND 1 INCH NPT THREADED CONDUIT OPENINGS. USE ONLY IECEX OR ATEX APPROVED CABLE GLANDS, STOPPING PLUGS OR STOPPING BOXES.
- 1.8  CUSTOMER SUPPLIED EQUIPMENT MUST BE CERTIFIED FOR USE IN THE CLASSIFIED HAZARDOUS LOCATION IN WHICH IT IS INSTALLED.
- 1.9  CUSTOMER SUPPLIED EQUIPMENT MUST NOT USE OR GENERATE MORE THAN 250V WITH RESPECT TO GROUND.
- 1.10  CUSTOMER SUPPLIED EQUIPMENT MUST BE INSTALLED ACCORDING TO THE MANUFACTURERS INSTALLATION INSTRUCTIONS.

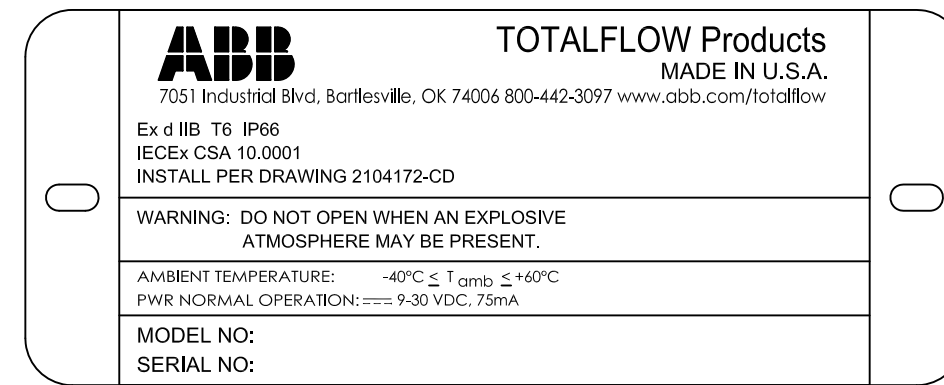
END PRODUCT APPROVED FOR USE IN POTENTIALLY EXPLOSIVE ATMOSPHERES.
NO CHANGES ALLOWED WITHOUT APPROVAL OF AUTHORIZED PERSON(S)
IDENTIFIED BY DRAWING 2101982-AI.

| ASSEMBLY/QUANTITY | ITEM NO. | PART NUMBER | DESCRIPTION | REF/ZONE DESIG MATERIAL | UNIT MEAS |
|---|--|-------------|-----------------------------------|-------------------------|---|
| 001 | | | | | |
| DO NOT SCALE DRAWING | UNLESS OTHERWISE SPECIFIED DIMENSIONS ARE IN INCHES | | PRODUCT LINE TOTALFLOW® | LEVEL 3 |  TOTALFLOW Products |
| THIRD ANGLE PROJECTION  | TOLERANCES ARE: DECIMAL ANGULAR .XX ± ± -- .XXX ± -- | | DESIGN D. ADAMS | DATE 10/04/08 | |
| | BREAK ALL SHARP CORNERS AND EDGES DIMENSIONS APPLY BEFORE FINISH | | DRAWN B. LEMEN | 10/04/08 | |
| | | | CHECKED D. ADAMS | 10/04/08 | |
| | | | APPROVED D. ADAMS | 10/04/08 | |
| | | | SCALE NONE | SIZE B | DOC TYPE CD |
| | | | DRAWING NO. 2104172 | REV AC | SHEET 1 OF 7 |

MARKINGS -
IECEX CERTIFIED PRODUCTS ARE MARKED WITH THE FOLLOWING:



IP53 RATED ENCLOSURES HAVE A
BREATHING/DRAIN LOCATED
ON THE LOWER LEFT SIDE.



IP66 RATED ENCLOSURES HAVE A
STOPPING PLUG LOCATED
ON THE LOWER LEFT SIDE.

1 CERTIFICATION

H 6200EX SERIES: Ex d IIB, T6, $-40^{\circ}\text{C} \leq T_{\text{amb}} \leq +60^{\circ}\text{C}$, IECEx CSA 10.0001
6200EX: Ex d IIB, T6, $-40^{\circ}\text{C} \leq T_{\text{amb}} \leq +60^{\circ}\text{C}$, KOSHA CERTIFICATE 12-AV4BO-0088

2 ENCL ASSY

- 2.1 2101820 SANDCAST ENCLOSURE, XFC6200EX II (ADALET)
- 2.2 2104785-001 SANDCAST ENCL ASSY 45mm (GUPTA)

3 ELECTRONIC BD OPTION

3.1 2103342 MOTHERBOARD, 6200EX, G4 W/2102427 EC2410 PROCESSOR CARD OR 2103639 EC2410 PROCESSOR CARD OR 2103639 EC2410 PROCESSOR CARD 32MB/64MB (INCLUDES: 1801337-001 TADIRAN LITHIUM BATTERY 3.6V 2.1AH TL-5242/W)

4 MEASUREMENT UNIT ASSY

4.1 ELECTRONIC ASSY

- 4.1.1 2101471-001 EX FLOW COMPUTER PCBA (INCLUDES: 1801337-001 TADIRAN LITHIUM BATTERY 3.6V 2.1AH TL-5242/W)
- 4.1.2 2103098-001 EX FLOW COMPUTER (M) PCBA (INCLUDES: 1801337-001 TADIRAN LITHIUM BATTERY 3.6V 2.1AH TL-5242/W)
- 4.1.3 2103107-001 EX FLOW COMPUTER REDUCED RANGE PCBA (INCLUDES: 1801337-001 TADIRAN LITHIUM BATTERY 3.6V 2.1AH TL-5242/W)

4.2 MULTIVARIABLE TRANSDUCER

- 4.2.1 2101465-XXX ABB MINDEN T2000EX, DP/AP
- 4.2.2 2102128-XXX ABB MINDEN, DP/AP EX, OPTIMIZED
- 4.2.3 2101901-XXX ABB MINDEN, AP EX
- 4.2.4 2102182-XXX FOXBORO, DP/AP EX

4.3 SENSOR INTERFACE

- 4.3.1 2103641 RAW SENSOR SIGNAL DIGITIZING BD
- 4.3.2 2104742 RAW SENSOR BUFFERED SIGNAL DIGITIZING BD

16 I/O OPTION

16.1 2102458-001 EX/IO DAUGHTER CARD

17 TERM BD OPTION

17.1 2101873-001 EX TERMINATION BD II, XFC6200EX PCBA

17.2 2103344-001 32 BIT POWER/TERM, 6200EX, G4, PCBA

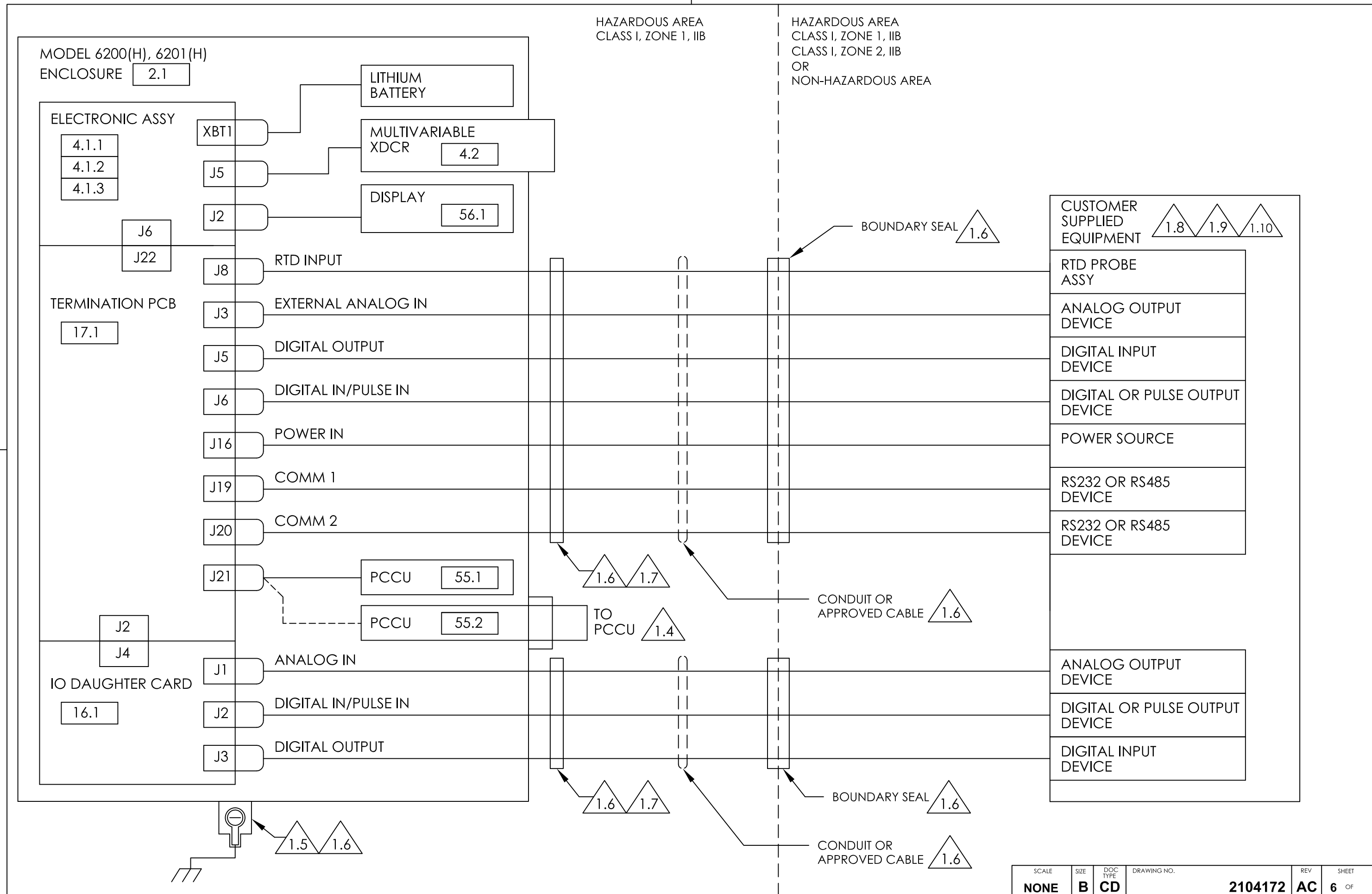
55 PCCU OPTION

55.1 2101667-001 INTERNAL PCCU CONNECTOR (EXTERNAL PCCU ENTRY FITTED WITH PLUG 2101519-001)

55.2 2101416 EXTERNAL PCCU CONNECTOR HOUSING, FLAMEPROOF

56 DISPLAY OPTION

56.1 2101650-001/002 DISPLAY ASSY, 16 X 4 LCD, HANDTRONIX



| SCALE | SIZE | DOC TYPE | DRAWING NO. | REV | SHEET |
|-------|------|----------|-------------|-----|-------|
| NONE | B | CD | 2104172 | AC | 6 OF |

MODEL 6200(H), 6201(H)

ENCLOSURE 2.1 2.2

ELECTRONIC ASSY

3.1

LITHIUM BATTERY

INTERFACE BD

4.3

MULTIVARIABLE XDCR

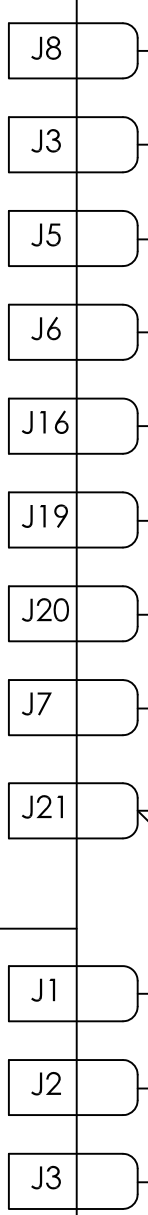
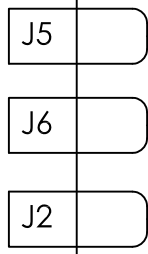
4.2

DISPLAY

56.1

HAZARDOUS AREA CLASS I, ZONE 1, IIB

HAZARDOUS AREA CLASS I, ZONE 1, IIB
CLASS I, ZONE 2, IIB
OR
NON-HAZARDOUS AREA

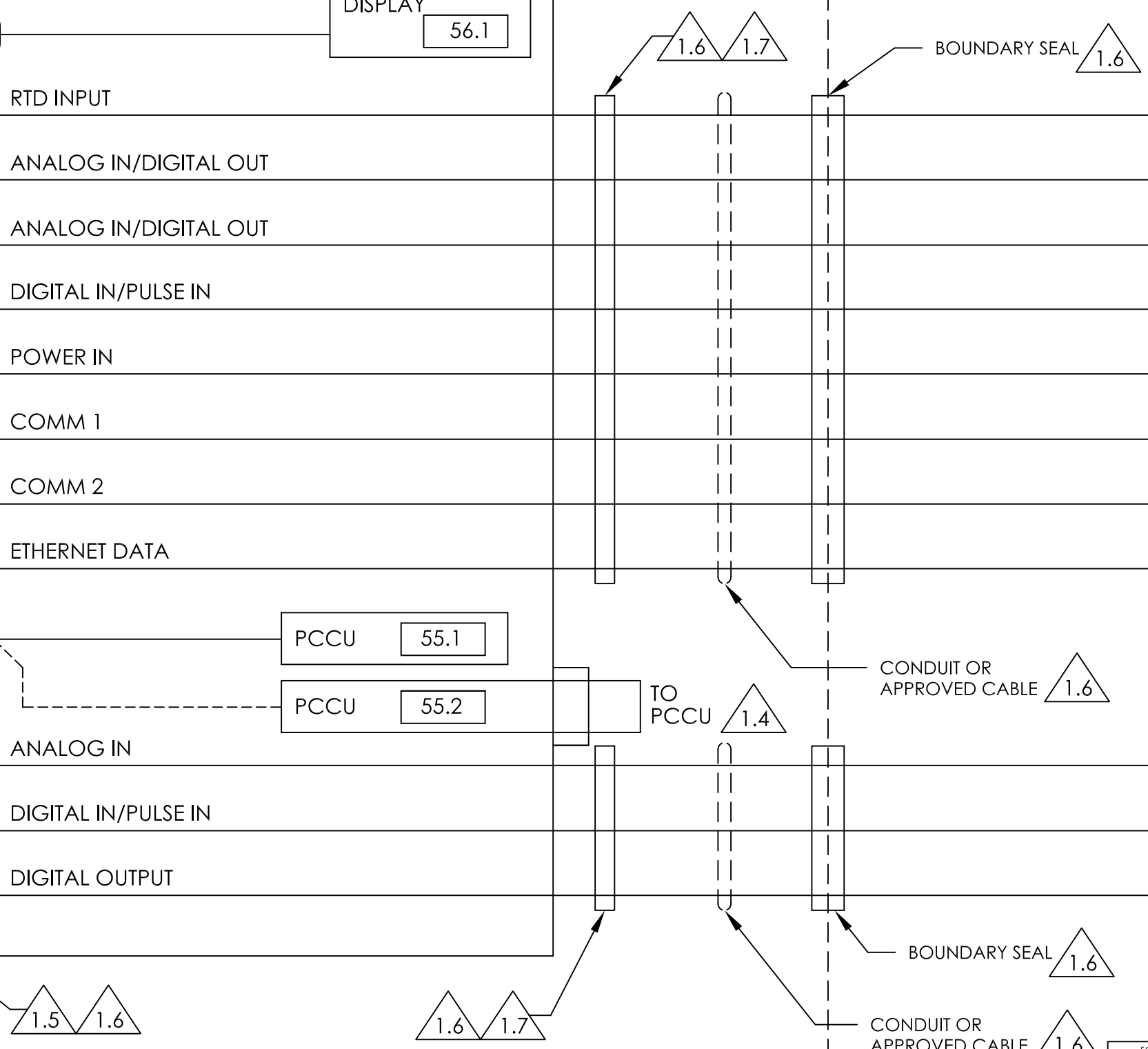
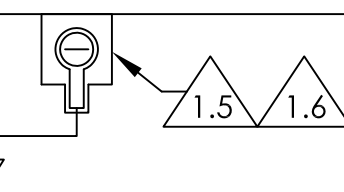


TERMINATION PCB

17.2

IO DAUGHTER CARD

16.1



| | |
|------------------------------------|--------------|
| CUSTOMER SUPPLIED EQUIPMENT | 1.8 1.9 1.10 |
| RTD PROBE ASSY | |
| ANALOG OUTPUT/DIGITAL INPUT DEVICE | |
| ANALOG OUTPUT/DIGITAL INPUT DEVICE | |
| DIGITAL OR PULSE OUTPUT DEVICE | |
| POWER SOURCE | |
| RS232 OR RS485 DEVICE | |
| RS232 OR RS485 DEVICE | |
| ETHERNET DEVICE | |
| | |
| ANALOG OUTPUT DEVICE | |
| DIGITAL OR PULSE OUTPUT DEVICE | |
| DIGITAL INPUT DEVICE | |