



DEH41301

Copper Lug Kit

THCL200



Hazards of electrical shock or burn! Turn off power before working inside this equipment.

Used With:

200 Ampere NEMA 4/4X, 12 Mill Duty and Heavy Duty Switches

Description:

THCL200 kit provides 8 copper lugs (set of 6 copper lugs for line and load terminals and set of 2 copper lugs for ground) and necessary mounting hardware (3 line nuts, 3 load nuts, 3 lock washers, 3 flat washers and 2 ground screws). User can replace the factory installed hardware with hardware available in the kit.

1. Remove the pre-installed aluminum lugs from line side and load side of switch base as shown in the figure 1 by unscrewing the nuts.

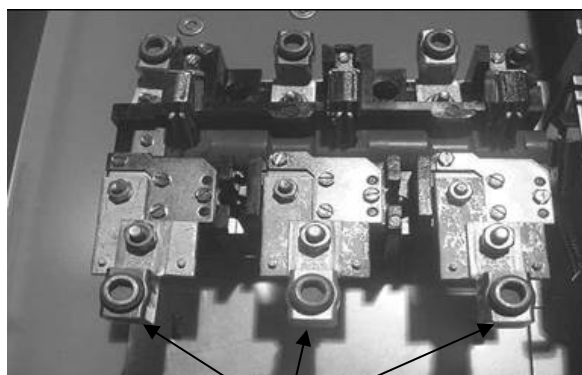
—
Fig. 1



Aluminum lugs

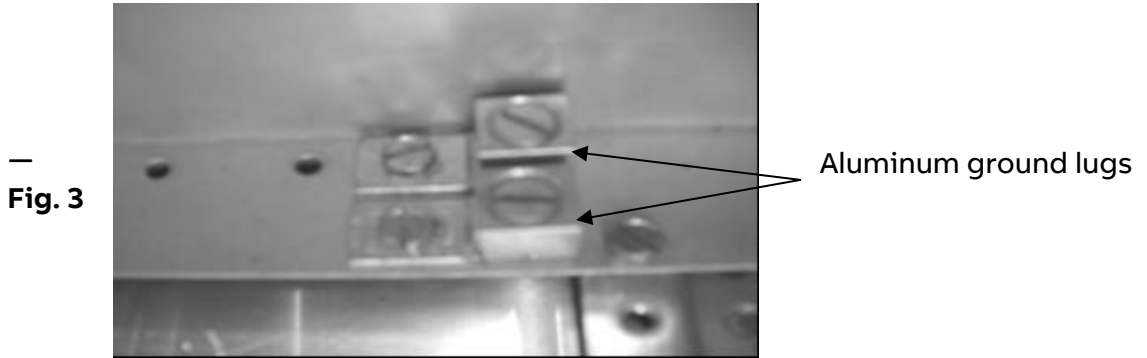
2. Assemble the copper lugs available in the kit (set of 6) at the same locations as shown in the figure 2. Tight the barrel nuts with torque 96 inch-lbs.

—
Fig. 2



Copper lugs

- 3. Remove pre-installed aluminum ground lugs mounted on the mechanism plate by unscrewing two screws.



- 4. Assemble copper lugs available in kit (set of 2) at the same locations as shown in the figure 4. Tight the screws with torque 27-32 inch lbs.

