



# ReliaGear™ busway

## Lighter, smaller, easier to modify



ReliaGear busway combines benefits of the proven Spectra™ series busway, with the sophisticated technology of the SACE® Tmax® circuit breaker up to 800 A, fused switches up to 600 A in a plug-in unit and PTO up to 1200 A with SACE Tmax XT and 1600 A with Power Break II insulated case circuit breaker.

### Key differentiators

- SACE Tmax XT technology with optional Ekip G Touch
- Rotary handle with LOTO built-in
- New modern look
- Fewer parts (switches, breakers, rotary handles and lugs)
- Elimination of yokes and handle linkage parts
- Improved weather protection design...indoor IP40 and IP54/55 (splash/drip)
- Clear line side cover allows for better inspection of strap connections
- All mylar labels – higher quality, longer lasting
- Fusible J class plugs – no fuse clips needed
- No painted or plated parts inside the plug – using G90 steel
- Better customer access to Neutral and Ground lugs
- Better customer access to fuses

### Target markets

- Heavy industrial facilities
- Gas/oil refineries
- Data centers
- Hospitals
- Aviation facilities
- Commercial buildings
- High rise office or residential buildings
- Utility/vault service runs

ReliaGear™ busway is now available with a new modern look and the flexibility to scale for tomorrow. ReliaGear busway is ready to meet the ever-expanding needs of the marketplace while providing improved safety, reliability, and saving time and money. ReliaGear busway is a light weight, custom designed modular electrical power distribution system available up to 6000 A feeder style and 5000 A plug-in style.

### OS and OT fusible switch plug-in unit combination

Type	Amperes	U/L class fusing	Fuse description	Short circuit ratings in Ampere RMS symmetrical
OS	30-600	J*	current limiting rejection	125,000
	30-600	H/NEC*	one-time	10,000
	30-600	R*	current limiting rejection	200,000
OT	600	J	current limiting rejection	200,000

\* OS 600 A short circuit rating at 125,000

### ReliaGear busway circuit breaker plug-in unit references and ratings

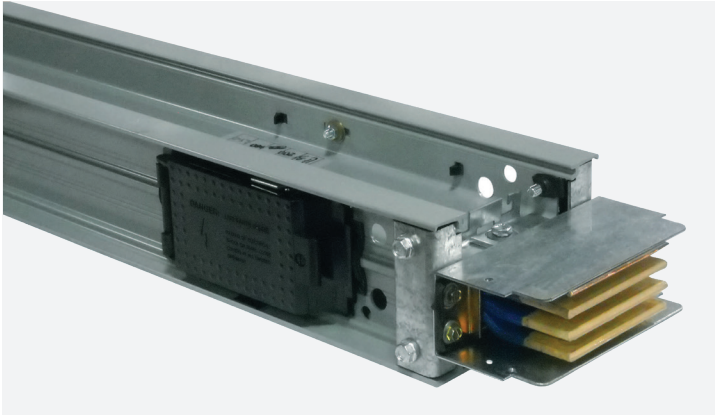
Construction	SACE Tmax frame	Trip ratings (amps)	Old frame type	Trip* ratings (amps)	XT frame IC ratings		
					240 V	380, 415 & 480 V	600 V
Low tier	-	-	SEDA	15-150	-	-	-
	XT2N	15-125	SEHA	15-150	65	25	18
	XT4N	70-250	SFHA	70-250	65	35	22
	XT5N	250-600	SGHA	250-500**	65	35	25
	XT7S	300-800	SKHA	300-800	65	50	25
Mid-tier	XT2S	15-125	SELA	15-150	100	65	25
	XT4S	70-250	SFLA	70-250	100	65	25
	XT5S	250-600	SGLA	250-500**	100	65	42
	XT7H	300-800	SKLA	300-800	100	65	42
High tier	XT2L	15-125	SEPA	15-150	200	100	35
	XT4L	70-250	SFPA	70-250	200	100	50
	XT5L	260-600	SGPA	260-500**	200	65	42
	XT7L	300-800	SKPA	300-800	200	65	42

\* SACE Tmax XT2 and XT4 both are available at 80% and 100% UL rated. XT2 available only as Thermo Mag TMF <80 A and TMA 80-125 A; XT4 and XT5 available with either as Thermo Mag Adjustable or eKip trip unit; XT7 available only with Ekip

\*\* Typical for all XT5 breakers

\*\*\* PTO with XT7 1000 A and 1200 A is available at 100% rated; requires conductors sized based on 75C with an insulation rating of 90C

# Benefits of ReliaGear™ busway



ReliaGear™ busway provides a sustainable and flexible approach to power distribution.

By using ReliaGear busway in place of cable and conduit, operators realize savings in terms of capital, space, and installation time.



## Simplified installation and reduced costs

Designed and built to fit specific layout needs, ReliaGear busway cuts labor time by up to half. ReliaGear busway eliminates the time-consuming tasks of forming conduit and pulling wire.



## Flexible, compact design

Ideal for applications where space is limited. Due to its modular design, busway runs can be easily added, disassembled, and relocated with minimal effort.



## Safe and reliable

Coupled with integrated safety features, busway provides increased reliability with durable epoxy insulation. ABB exclusive Blue Coat™ epoxy insulation provides the industry's longest insulation life of 50+ years.



## Sustainability

When compared to cable and conduit, ReliaGear busway is the sustainable option using significantly less material.



## Manufacturing for the future

ABB implemented new production technologies enabling a 30% capacity increase while reducing environmental impact.



## Ratings to meet all requirements

Broad portfolio ranges up to 6000 A. Available in a variety of lengths and sizes to maximize space savings.

To learn more about ReliaGear busway, contact a local sales representative or visit

<https://electrification.us.abb.com/products/busway>