

Type RCA

Indoor current transformer

Product features

- 600 volt, indoor, 10 kV BIL
- 25-400 Hertz
- Primary amperes: 200-4000
- Mechanical rating: 180 x rated current

Application

The RCA current transformer is used as the source of current for relaying and metering.

Construction features

The ring-type core is insulated and toroidally wound with a fully distributed secondary winding. The protective case, made of an impact-resistant polycarbonate, is assembled using self-tapping screws.

Secondary terminals

Secondary terminals are 10-32 brass stud-type.

Curves

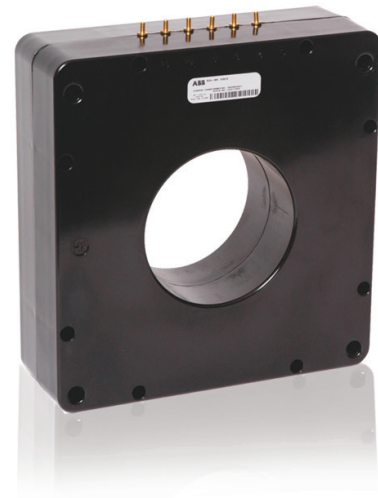
Saturation, overcurrent, ratio correction factor, and phase-angle curves are available upon request.

Test reports

IEEE test reports are stored electronically and can be e-mailed in various formats at the time of shipment.

Standards

This unit meets all applicable IEEE and NEMA standards.



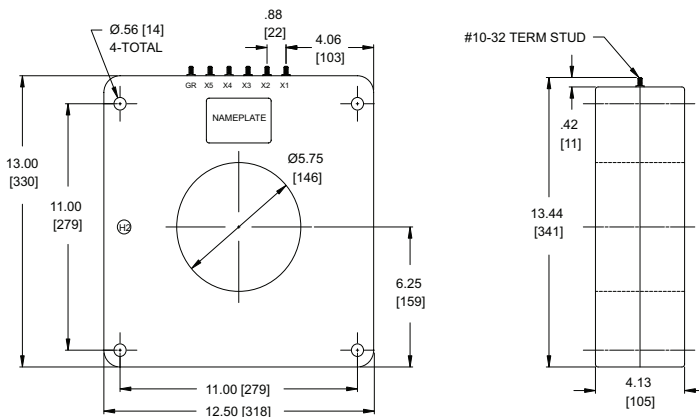
Selection guide

Primary ampere rating	Continuous current rating		IEEE metering accuracy					IEEE relaying accuracy	Thermal rating*	Style number
	30° C	55° C	B-0.1	B-0.2	B-0.5	B-0.9	B-1.8			
Type RCA 5.75" window										
200	2.0	1.5	0.6	0.6	1.2	2.4	2.4	C50	100	7525A19G01
300	2.0	1.5	0.3	0.3	0.6	1.2	1.2	C100	100	7525A19G02
400	2.0	1.5	0.3	0.3	0.3	0.6	1.2	C100	100	7525A19G03
600	2.0	1.5	0.3	0.3	0.3	0.3	0.3	C200	100	7525A19G04
800	1.5	1.0	0.3	0.3	0.3	0.3	0.3	C200	80	7525A19G05
1000	1.5	1.0	0.3	0.3	0.3	0.3	0.3	C200	80	7525A19G06
1200	1.5	1.0	0.3	0.3	0.3	0.3	0.3	C400	80	7525A19G07
1500	1.33	1.0	0.3	0.3	0.3	0.3	0.3	C400	60	7525A19G08
2000	1.33	1.0	0.3	0.3	0.3	0.3	0.3	C800	60	7525A19G09
2500	1.33	1.0	0.3	0.3	0.3	0.3	0.3	C800	60	7525A19G10
3000	1.33	1.0	0.3	0.3	0.3	0.3	0.3	C800	60	7525A19G11
4000	1.33	1.0	0.3	0.3	0.3	0.3	0.3	C800	60	7525A19G12
Multi-Ratio, IEEE, 5 Terminals										
600	2.0	1.5	0.3	0.3	0.3	0.3	0.3	C200	100	7525A19G13
1200	1.5	1.0	0.3	0.3	0.3	0.3	0.3	C400	80	7525A19G14
2000	1.33	1.0	0.3	0.3	0.3	0.3	0.3	C800	60	7525A19G15
3000	1.33	1.0	0.3	0.3	0.3	0.3	0.3	C800	60	7525A19G16
4000	1.33	1.0	0.3	0.3	0.3	0.3	0.3	C800	60	7525A19G17

* times normal, 1 second.

Additional styles available upon request. Contact your ABB sales representative or call +1-252-827-3212 for more information.

Unit dimensions



For more information please contact:

ABB Inc.
Medium Voltage Distribution Components
 3022 NC 43 North
 Pinetops, NC 27864
 USA
 Phone: +1 252 827 3212
 Fax: +1 252 827 4286
www.abb.com/mediumvoltage

Type RCA

Approximate weight is 58 lbs.

Note: Metric dimensions are displayed in [mm].

Note:

The information contained in this document is for general information purposes only. While ABB strives to keep the information up to date and correct, it makes no representations or warranties of any kind, express or implied, about the completeness, accuracy, reliability, suitability or availability with respect to the information, products, services, or related graphics contained in the document for any purpose. Any reliance placed on such information is therefore strictly at your own risk. ABB reserves the right to discontinue any product or service at any time.

Copyright 2009 ABB.
 All rights reserved.