



MEASUREMENT & ANALYTICS

ABB Ability™ Smart Device Manager

Next generation
handheld configurator



ABB Ability™ Smart Device Manager

ABB Ability™ Smart Device Manager is the next generation Handheld Configurator with FDI based device management and is equipped with a high-performance rugged tablet with innovative graphical user interface that helps field engineers to effectively work with process instrumentation.

ABB's Smart Device Manager initiates a paradigm shift for configuration and parametrization of Fieldbus devices.

The Handheld Configurator has innovative, intuitive navigation and an adaptive user interface which includes a 'verification' feature.

This makes configuration, commissioning, diagnostics and maintenance of field instrumentation faster and easier than ever before.



Introducing ABB Ability™ Smart Device Manager

Device management made easy

ABB's Smart Device Manager is an innovative and intuitive solution that makes configuration, commissioning, diagnostics and maintenance of field instrumentation faster and easier than ever before.

Fully Rugged Next Generation Tablet with 10.1" Full HD Display, making it ideal for field workforce and sets a benchmark for general and hazardous environment

- The flexible configuration port gives business users the legacy port options they require in a compact mode.
- Never-before has so much capability, flexibility and performance been packed into such a small form factor with premium outdoor viewing quality and lightweight design
- Comprehensive package of Cyber secured tablet PC and Future-proof software in the market – Ready-to-use
- Hand-held verification
- Enables device set-up without power, steamlining commissioning and boosting efficiency

Intuitive user interface for easy navigation and data interpretation

- Same look and feel - same menu and interface across models
- Touch navigation or normal PC navigation (mouse, keyboard)
- The UI supports multiple device views allowing the

Flexible and simple architecture

- Quick to start - within 3 minutes
- Includes NAMUR NE 107 instrument diagnosis
- In-situ verification for ABB devices and healthcheck verification for 3rd party devices
- Power-Loop capabilities (optional) enhance commissioning without need of external power supply
- Bluetooth HART modem (optional) can be used for configuration even in congested panels, hazardous zones, or hard-to-reach locations.

General Purpose Handheld configurator

- Fully rugged tablet 10.1" FHD Lumibond® display with Getac sunlight readable technology (1,000 nits) and capacitive touchscreen
- 10.1" Wide Viewing Angle TFT LCD WUXGA (1920 x 1200) Protection film Quad-Core processor for rough environments Rugged body with 6ft (1.8m) drop resistant
- Windows 11 Operating Systems 8GB RAM & 256GB RAM Storage (SD or USB 2.0)
- Up to 8-10 hours battery life with user replaceable battery



Hazardous area Handheld Configurator

- Intrinsically Safe Tablet is positioned to be the most advanced, efficient, and rugged Windows tablet,
- Engineered with faster wireless services, enhanced memory, and expanded storage. Operating in the most hazardous industries with explosive environments.
- Windows 11 Pro 64-bit
- 10.1 in / 25.6 cm AHVA display WQXGA (2560 x 1600 px) Contrast 1000:1 (min.: 800:1), Brightness 540 NITs, Viewing angle (up/down, left/right) 170°, 16.7M colors
- Intel® Quad-Core Apollo Lake processor
- Base: 1.6GHz, Burst 1.8GHz
- 8GB RAM, 256GB Storage
- Wi-Fi 802.11 a/b/g/n/ac, Bluetooth 5.2 + HS
- Normal operation up to 6 hours and 8 hours for extended usage.
- Lightweight design - approx 1.4kg
- User exchangeable battery



Bluetooth

- ABB Ability™ Smart Device Manager has an optional offering “Bluetooth connectivity”
- When accessing devices in confined or hard-to-reach areas is challenging, Bluetooth-based communication allows for the wireless configuration of HART field devices using SDM tablets—eliminating cumbersome cables and enhancing workflow efficiency
- Compliant with the HART Communication Foundation standards, ensuring compatibility with any HART-capable field transmitter or instrument

Power-Loop

- ABB Ability™ Smart Device Manager optional offering “Power-Loop”
- Eliminates the need for external power supplies, allowing seamless device configuration during project commissioning even in the absence of main power
- Streamlines workflows and drives greater efficiency across project execution

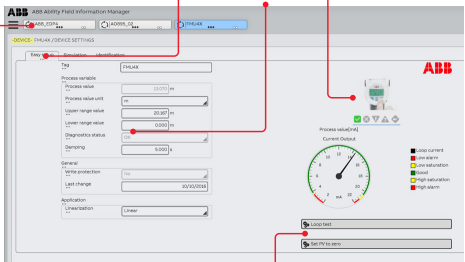
Easy navigation: just switch between various views of the devices

Device bar -
Multi-device
management

Typical
parameters

Device health
(NAMUR)

Device
info



One click
functions

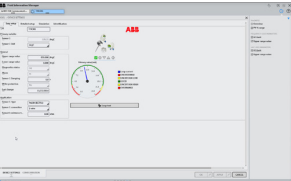
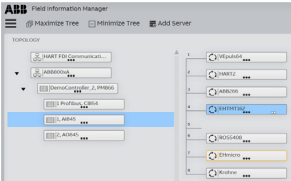
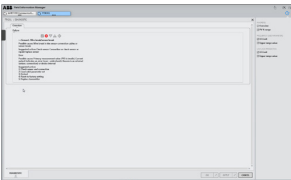


ABB Ability™ Smart Device Manager:

For more information

Just go to:

<https://new.abb.com/products/measurement-products/service/advanced-services/abb-ability-smart-device-manager>



We reserve the right to make technical changes or modify the contents of this document without prior notice. With regard to purchase orders, the agreed particulars shall prevail. ABB AG does not accept any responsibility for potential errors or possible lack of information in this document.

We reserve all rights in this document and in the subject matter and illustrations contained therein. Any reproduction, disclosure to third parties or utilization of its contents – in whole or in parts – is forbidden without prior written consent of ABB AG.

Copyright© 2025 ABB
All rights reserved