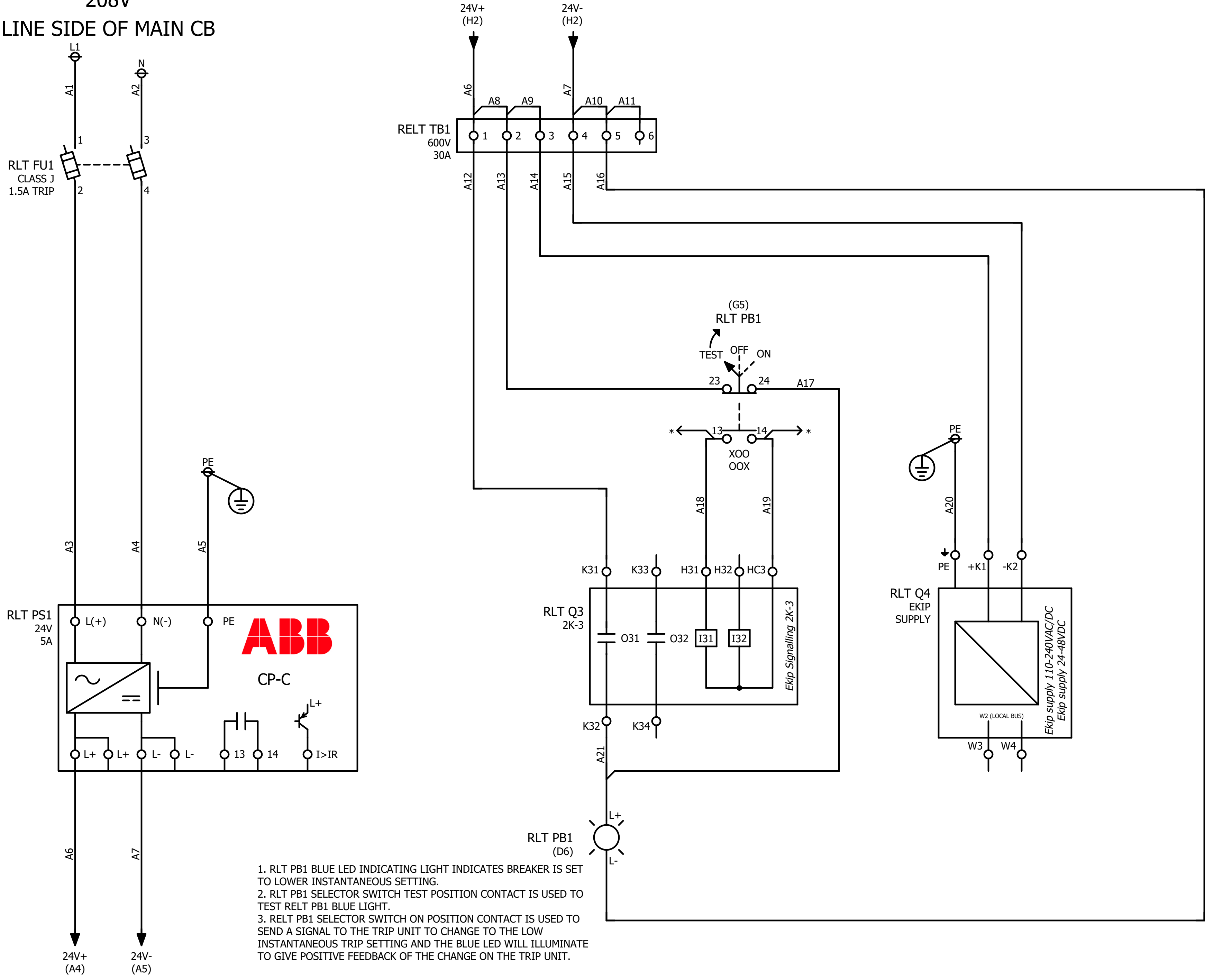


208V
LINE SIDE OF MAIN CB



1. RLT PB1 BLUE LED INDICATING LIGHT INDICATES BREAKER IS SET TO LOWER INSTANTANEOUS SETTING.
2. RLT PB1 SELECTOR SWITCH TEST POSITION CONTACT IS USED TO TEST RLT PB1 BLUE LIGHT.
3. RLT PB1 SELECTOR SWITCH ON POSITION CONTACT IS USED TO SEND A SIGNAL TO THE TRIP UNIT TO CHANGE TO THE LOW INSTANTANEOUS TRIP SETTING AND THE BLUE LED WILL ILLUMINATE TO GIVE POSITIVE FEEDBACK OF THE CHANGE ON THE TRIP UNIT.

* OPTIONAL REMOTE RELT ENABLE CONTACT

REV	DATE:	DESCRIPTION:	ISSUED BY:	ENGINEER:	Document #	PLANT: Monterrey, N.L. , México	Wiring Diagram	ORDER NUMBER:	STATUS:	MARKS:
				JMD	9AKK108469A4214	ABB	ReliaGear Switchboard	CTO STD -	Release	
				CHECKED BY:				+RELT =208V &	REQUISITION:	SHEET:
				JMD						1

Connection list

Connection	Target 1	Target 2	Color	Wire Gauge (AWG)	Function definition
A1	-L1	-RLT FU1:1	BLK	14	Conductor / wire
A2	-N	-RLT FU1:3	WHT	14	Conductor / wire
A3	-RLT FU1:2	-RLT PS1:L(+)	BLK	14	Conductor / wire
A4	-RLT FU1:4	-RLT PS1:N(-)	WHT	14	Conductor / wire
A5	-PE	-RLT PS1:PE	BLK	14	Conductor / wire
A6	-RELT TB1:1	-RLT PS1:L+	BLK	14	Conductor / wire
A7	-RELT TB1:4	-RLT PS1:L-	BLK	14	Conductor / wire
A8	-RELT TB1:1	-RELT TB1:2	BLK	14	Conductor / wire
A9	-RELT TB1:2	-RELT TB1:3	BLK	14	Conductor / wire
A10	-RELT TB1:4	-RELT TB1:5	BLK	14	Conductor / wire
A11	-RELT TB1:5	-RELT TB1:6	BLK	14	Conductor / wire
A12	-RELT TB1:1	-RLT Q3:K31	BLK	14	Conductor / wire
A13	-RELT TB1:2	-RLT PB1:23	BLK	14	Conductor / wire
A14	-RELT TB1:3	-RLT Q4:+K1	BLK	14	Conductor / wire
A15	-RELT TB1:4	-RLT Q4:-K2	BLK	14	Conductor / wire
A16	-RELT TB1:5	-RLT PB1:L-	BLK	14	Conductor / wire
A17	-RLT PB1:24	-RLT PB1:L+	BLK	14	Conductor / wire
A18	-RLT PB1:13	-RLT Q3:H31	BLK	14	Conductor / wire
A19	-RLT PB1:14	-RLT Q3:HC3	BLK	14	Conductor / wire
A20	-PE	-RLT Q4:PE	GRN	14	Conductor / wire
A21	-RLT Q3:K32	-RLT PB1:L+	BLK	14	Conductor / wire

REV	DATE:	DESCRIPTION:	ISSUED BY:	ENGINEER:	Document #	PLANT: Monterrey, N.L. , México	ORDER NUMBER:	STATUS:	MARKS:
				JMD	9AKK108469A4214		CTO STD -	Release	
				CHECKED BY:			Connection list : A1 - A21	ITEM.SECT / FUNC / DOC TYPE	REQUISITION:
				JMD		ReliaGear Switchboard	+RELT =208V &		2