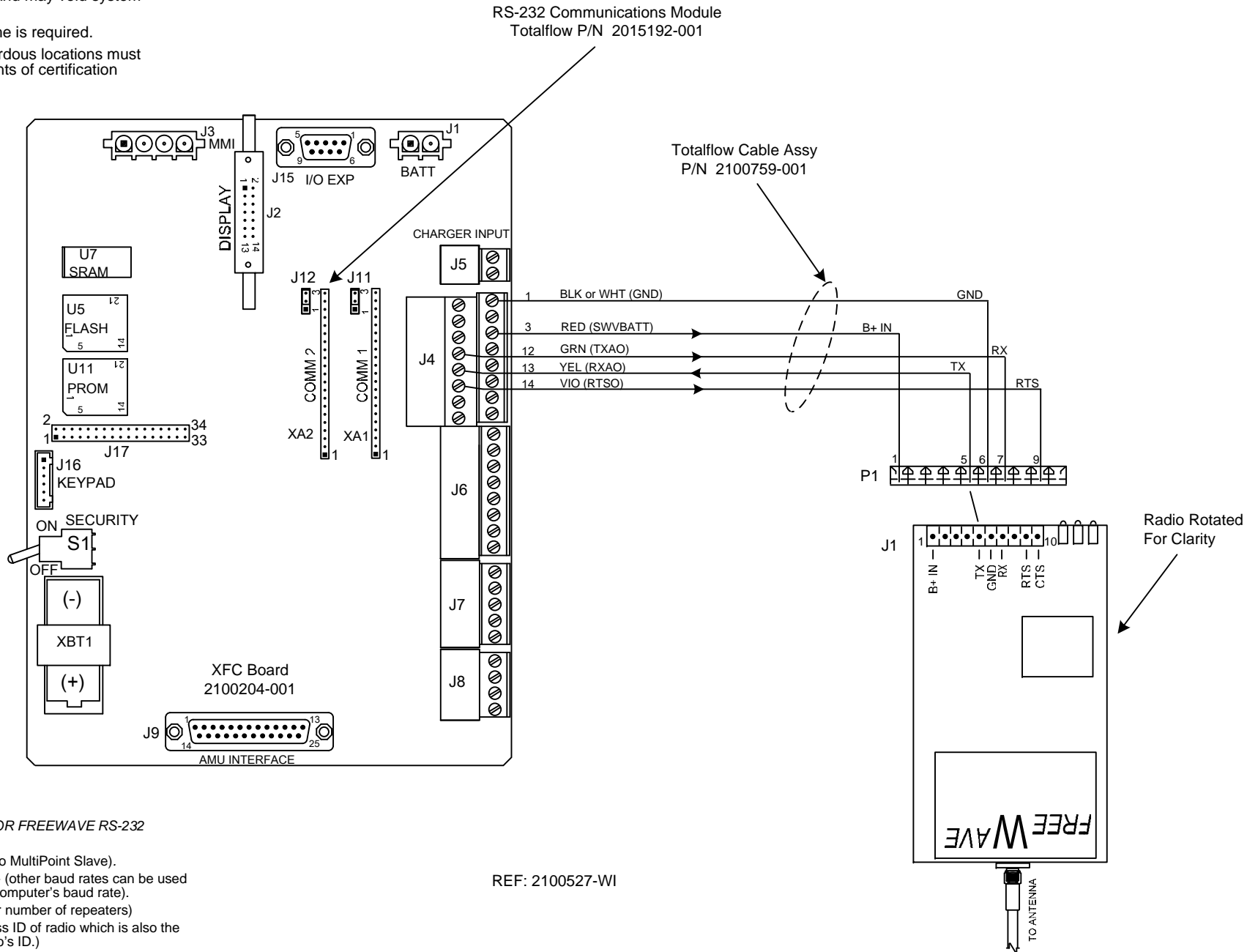


NOTES:

- WARNING!**
Using a non-factory RS232 data cable may result in damage and may void system warranty.
- Zero second Listen Time is required.
- All installations in hazardous locations must comply with requirements of certification drawing 2015246-CD.



PRIMARY SETUP ITEMS FOR FREEWAVE RS-232 RADIOS:

- Modem Mode = 3 (Point to MultiPoint Slave).
- Modem Baud = 6 (9600) - (other baud rates can be used but needs to match flow computer's baud rate).
- Number Repeaters (Enter number of repeaters)
- NetWork ID (Enter address ID of radio which is also the same as the Master Radio's ID.)

Note: Typically, all other setup items can be left in their default state.

| | | | | | | | |
|------------|-----------------------|--------|----------|---|---------|-----|--------|
| ABB | TOTALFLOW Products | ACTION | DOC TYPE | TITLE | DWG NO. | REV | SHEET |
| | | L15882 | UD | XFC COMM 2 (2100204 BD) TO FREEWAVE RADIO (RS-232) | 2101753 | AA | 1 OF 1 |