

---

# **Baldor-Reliance<sup>®</sup> AC and DC Mine Motors**

## Installation and Operating Manual

**BALDOR • RELIANCE**

June 2022

Any trademarks used in this manual are the property of their respective owners.

**Important:**

Be sure to check [www.baldor.com](http://www.baldor.com) to download the latest version of this manual in Adobe Acrobat PDF format.

**Note! The manufacturer of these products, Baldor Electric Company became ABB Motors and Mechanical Inc. on March 1, 2018. Nameplates, Declaration of Conformity and other collateral material may contain the company name of Baldor Electric Company and the brand names of Baldor-Dodge and Baldor-Reliance until such time as all materials have been updated to reflect our new corporate identity.**

# Section 1

## General Information

---

<b>Overview</b>	<p>This manual contains general procedures that apply to Baldor Motor products. Be sure to read and understand the Safety Notice statements in this manual. For your protection, do not install, operate or attempt to perform maintenance procedures until you understand the Warning and Caution statements.</p> <p>A Warning statement indicates a possible unsafe condition that can cause harm to personnel.</p> <p>A Caution statement indicates a condition that can cause damage to equipment.</p> <p>Baldor mining motors are sold to OEM (Original Equipment Manufacturers) companies who provide motors and equipment containing these motors as their product offerings. Be sure to consult the OEM documents for safety and regulatory information that is important to the application of these products.</p>
<b>Important:</b>	<p>This instruction manual is not intended to include a comprehensive listing of all details for all procedures required for installation, operation and maintenance. This manual describes general guidelines that apply to most of the motor products shipped by Baldor. If you have a question about a procedure or are uncertain about any detail, Do Not Proceed. Please contact your OEM for more information or clarification.</p> <p>Before you install, operate or perform maintenance, become familiar with the following:</p> <ul style="list-style-type: none"><li>• IEC60034-1 Electrical and IEC60072-1 Mechanical specifications.</li></ul>
<b>Safety Notice:</b>	<p>This equipment contains high voltage! Electrical shock can cause serious or fatal injury. Only qualified personnel should attempt installation, operation and maintenance of electrical equipment.</p> <p>For US markets, be certain that you are completely familiar with MSHA (Mine Safety and Health Administration) standards and regulations. For other markets, check for safety regulations and local codes applicable for your region. In all locations, be completely familiar with safety standards for selection, installation and use of electric motors and generators and other local codes and practices as applicable for your region. Unsafe installation or use can cause conditions that lead to serious or fatal injury. Only qualified personnel should attempt the installation, operation and maintenance of this equipment.</p>
<b>WARNING:</b>	<p><b>Do not touch electrical connections before you first ensure that power has been disconnected. Electrical shock can cause serious or fatal injury. Only qualified personnel should attempt the installation, operation and maintenance of this equipment.</b></p>
<b>WARNING:</b>	<p><b>Disconnect all electrical power from the motor windings and accessory devices before disassembling of the motor. Electrical shock can cause serious or fatal injury.</b></p>
<b>WARNING:</b>	<p><b>Be sure the system is properly grounded before applying power. Do not apply AC power before you ensure that all grounding instructions have been followed. Electrical shock can cause serious or fatal injury.</b></p>
<b>WARNING:</b>	<p><b>Avoid extended exposure to machinery with high noise levels. Be sure to wear ear protective devices to reduce harmful effects to your hearing.</b></p>
<b>WARNING:</b>	<p><b>Surface temperatures of motor enclosures may reach temperatures which can cause discomfort or injury to personnel accidentally coming into contact with hot surfaces. When installing, protection should be provided by the user to protect against accidental contact with hot surfaces. Failure to observe this precaution could result in bodily injury.</b></p>
<b>WARNING:</b>	<p><b>Guards must be installed for rotating parts to prevent accidental contact by personnel. Accidental contact with body parts or clothing can cause serious or fatal injury.</b></p>
<b>WARNING:</b>	<p><b>This equipment may be connected to other machinery that has rotating parts or parts that are driven by this equipment. Improper use can cause serious or fatal injury. Only qualified personnel should attempt to install operate or maintain this equipment.</b></p>
<b>WARNING:</b>	<p><b>Do not by-pass or disable protective devices or safety guards. Safety features are designed to prevent damage to personnel or equipment. These devices can only provide protection if they remain operative.</b></p>
<b>WARNING:</b>	<p><b>Be sure the load is properly coupled to the motor shaft before applying power. The shaft key must be fully captive by the load device. Improper coupling can cause harm to personnel or equipment if the load decouples from the shaft during operation.</b></p>
<b>WARNING:</b>	<p><b>Use proper care and procedures that are safe during handling, lifting, installing, operating and maintaining operations. Improper methods may cause muscle strain or other harm.</b></p>
<b>WARNING:</b>	<p><b>Pacemaker danger – Magnetic and electromagnetic fields in the vicinity of current carrying conductors and permanent magnet motors can result result in a serious health hazard to persons with cardiac pacemakers, metal implants, and hearing aids. To avoid risk, stay way from the area surrounding a permanent magnet motor.</b></p>
<b>WARNING:</b>	<p><b>Before performing any motor maintenance procedure, be sure that the equipment connected to the motor shaft cannot cause shaft rotation. If the load can cause shaft rotation, disconnect the load from the motor shaft before maintenance is performed. Unexpected mechanical rotation of the motor parts can cause injury or motor damage</b></p>
<b>WARNING:</b>	<p><b>Motors with S2 30 Minute Rating Without Coolant Flow are thermally protected. It is intended that this duty and operation will permit repositioning of equipment in circumstances where interruption of coolant flow may be necessary. To ensure motors do not exceed the permissible maximum surface temperature for Group I equipment according to IEC 60079–0 they must be operated according to the duty cycle. In addition, it is critical the installation, use and maintenance allows free flow of air around the motors. Build-up of material such as coal dust that could also inhibit circulation must be removed before operation with this duty cycle. In addition, it is necessary to connect the motor thermal protection devices which act as a secondary measure to provide additional assurance that the permissible maximum surface temperature is not exceeded.</b></p>
<b>WARNING:</b>	<p><b>Thermostat contacts automatically reset when the motor has slightly cooled down. To prevent injury or damage, the control circuit should be designed so that automatic starting of the motor is not possible when the thermostat resets.</b></p>

---

## Safety Notice Continued

- Caution:** To prevent premature equipment failure or damage, only qualified maintenance personnel should perform maintenance.
- Caution:** Do not over-lubricate motor as this may cause premature bearing failure.
- Caution:** Do not lift the motor and its driven load by the motor lifting hardware. The motor lifting hardware is adequate for lifting only the motor. Disconnect the load (gears, pumps, compressors, or other driven equipment) from the motor shaft before lifting the motor.
- Caution:** If eye bolts are used for lifting a motor, be sure they are securely tightened. The lifting direction should not exceed a 20° angle from the shank of the eye bolt or lifting lug. Excessive lifting angles can cause damage.
- Caution:** To prevent equipment damage, be sure that the electrical service is not capable of delivering more than the maximum motor rated amps listed on the rating plate.
- Caution:** If a Motor Insulation test (High Potential Insulation test) must be performed, disconnect the motor from any Speed Control or drive to avoid damage to connected equipment.
- If you have any questions or are uncertain about any statement or procedure, or if you require additional information please contact your OEM.

## Receiving

Each Baldor Electric Motor is thoroughly tested at the factory and carefully packaged for shipment. When you receive your motor, there are several things you should do immediately.

1. Observe the condition of the shipping container and report any damage immediately to the commercial carrier that delivered your motor.
2. Verify that the part number of the motor you received is the same as the part number listed on your motor. The motor should be lifted using the lifting lugs or eye bolts provided.
  1. Use the lugs or eye bolts provided to lift the motor. Never attempt to lift the motor and additional equipment connected to the motor by this method. The lugs or eye bolts provided are designed to lift only the motor. Never lift the motor by the motor shaft or hood.
  2. If the motor must be mounted to a plate with the driven equipment such as pump, compressor etc., it may not be possible to lift the motor alone. For this case, the assembly should be lifted by a sling around the mounting base. The entire assembly can be lifted as an assembly for installation. If the load is unbalanced (as with couplings or additional attachments) additional slings or other means must be used to prevent tipping. In any event, the load must be secure before lifting.

## Storage

Storage requirements for motors and generators that will not be placed in service for at least six months from date of shipment.

Improper motor storage will result in seriously reduced reliability and failure. An electric motor that does not experience regular usage while being exposed to normally humid atmospheric conditions is likely to develop rust in the bearings or rust particles from surrounding surfaces may contaminate the bearings. The electrical insulation may absorb an excessive amount of moisture leading to the motor winding failure.

A wooden crate "shell" should be constructed to secure the motor during storage. This is similar to an export box but the sides & top must be secured to the wooden base with lag bolts (not nailed as export boxes are) to allow opening and closing many times without damage to the "shell".

Minimum resistance of motor winding insulation is 5 Meg ohms or the calculated minimum, whichever is greater. Minimum resistance is calculated as follows:  $R_m = kV + 1$   
where: ( $R_m$  is minimum resistance to ground in Meg-Ohms and  
kV is rated nameplate voltage defined as Kilo-Volts.)

Example: For a 480VAC rated motor  $R_m = 1.48$  meg-ohms (use 5 MΩ).

For a 4160VAC rated motor  $R_m = 5.16$  meg-ohms.

### Preparation for Storage

1. Some motors have a shipping brace attached to the shaft to prevent damage during transportation. The shipping brace, if provided, must be removed and stored for future use. The brace must be reinstalled to hold the shaft firmly in place against the bearing before the motor is moved.
  2. Store in a clean, dry, protected warehouse where control is maintained as follows:
    - a. Shock or vibration must not exceed 2 mils maximum at 60 hertz, to prevent the bearings from brinelling. If shock or vibration exceeds this limit vibration isolation pads must be used.
    - b. Storage temperatures of 10 °C (50 °F) to 49 °C (120 °F) must be maintained.
    - c. Relative humidity must not exceed 60%.
    - d. Motor space heaters (when present) are to be connected and energized whenever there is a possibility that the storage ambient conditions will reach the dew point. Space heaters are optional.
- Note: Remove motor from containers when heaters are energized, reprotect if necessary.
3. Measure and record the resistance of the winding insulation (dielectric withstand) every 30 days of storage.
    - a. If motor insulation resistance decreases below the minimum resistance, contact your OEM.
    - b. Place new desiccant inside the vapor bag and re-seal by taping it closed.
    - c. If a zipper-closing type bag is used instead of the heat-sealed type bag, zip the bag closed instead

- of taping it. Be sure to place new desiccant inside bag after each monthly inspection.
- d. Place the shell over the motor and secure with lag bolts.
  4. Where motors are mounted to machinery, the mounting must be such that the drains and breathers are fully operable and are at the lowest point of the motor. Vertical motors must be stored in the vertical position. Storage environment must be maintained as stated in step 2.
  5. Motors with anti-friction bearings are to be greased at the time of going into extended storage with periodic service as follows:
    - a. Motors marked "Do Not Lubricate" on the nameplate do not need to be greased before or during storage.
    - b. Ball and roller bearing (anti-friction) motor shafts are to be rotated manually every 3 months and greased every 6 months in accordance with the Maintenance section of this manual.
    - c. Sleeve bearing (oil lube) motors are drained of oil prior to shipment. The oil reservoirs must be refilled to the indicated level with the specified lubricant, (see Maintenance). The shaft should be rotated monthly by hand at least 10 to 15 revolutions to distribute oil to bearing surfaces.
  6. Coat all external machined surfaces with a rust preventing material. An acceptable product for this purpose is Exxon Rust Ban # 392.
  7. Carbon brushes should be lifted and held in place in the holders, above the commutator, by the brush holder fingers. The commutator should be wrapped with a suitable material such as cardboard paper as a mechanical protection against damage.

#### Non-Regreaseable Motors

Non-regreaseable motors with "Do Not Lubricate" on the nameplate should have the motor shaft rotated 15 times to redistribute the grease within the bearing every 3 months or more often.

#### All Other Motor Types

Before storage, the following procedure must be performed.

1. Remove the grease drain plug, if supplied, (opposite the grease fitting) on the bottom of each bracket prior to lubricating the motor.
2. The motor with regreaseable bearing must be greased as instructed in Section 3 of this manual.
3. Replace the grease drain plug after greasing.
4. The motor shaft must be rotated a minimum of 15 times after greasing.
5. Motor Shafts are to be rotated at least 15 revolutions manually every 3 months and additional grease added every nine months (see Section 3) to each bearing.
6. Bearings are to be greased at the time of removal from storage.

#### Removal From Storage

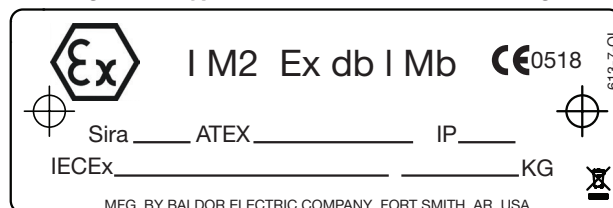
1. Remove all packing material.
2. Measure and record the electrical resistance of the winding insulation resistance meter at the time of removal from storage. The insulation resistance must not be less than 50% from the initial reading recorded when the motor was placed into storage. A decrease in resistance indicates moisture in the windings and necessitates electrical or mechanical drying before the motor can be placed into service. If resistance is low, contact your OEM.
3. Regrease the bearings as instructed in Section 3 of this manual.
4. Reinstall the original shipping brace if motor is to be moved. This will hold the shaft firmly against the bearing and prevent damage during movement.

### EX Equipment Marking and Acceptance Instructions

#### ATEX:

If the motor is marked as shown in Figure 1-1, it is designed to comply with all European Directives in effect at the time of manufacture, including ATEX Directive 2014/34/EU, Low Voltage Directive 2014/35/EU, and EMC Directive 2014/30/EU and designed considering the Machinery Directive 2006/42/EC. It is assumed that the installation of these motors by the OE Machinery manufacturer complies with this Directive and the standard EN 60204-1: Safety of Machinery – Electrical Equipment of Machines.

Figure 1-1 Typical AC and DC Mine Motor Markings



Any repairs by the end user, unless expressly approved by Baldor Electric Company, release Baldor Electric Company from responsibility to conformity. Authorized and qualified personnel only must perform repairs. These motors are designed in accordance with appropriate governmental regulatory agencies. They meet the technical requirements of the appropriate agencies at completion of manufacturing and have been issued approval numbers and nameplates. Any changes to these motors, may void these approvals and render these motors non-conforming and dangerous for use.

These motors are suitable for the ATEX Group and Category marked on the equipment nameplate. These motors are designed for normal mining applications and are in compliance with the above safety directives when operated within the parameters identified on the motor nameplate.

Specific motor type, frame designation, model number, date code, electrical specifications, and serial number are marked on a separate nameplate. Special Conditions are indicated on the motor nameplate as a suffix "X" on the certificate number. Details of this condition can be found on the motor approval certificate.

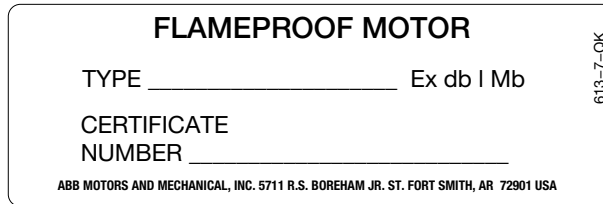
**IEC, IECEX, ANZEX CERTIFICATION:**

If the motors are marked as indicated below, the motors are certified to IEC60079-0 and IEC60079-1 standard series. It is assumed that the installation of these motors by the OE Machinery manufacturer will be carried out in accordance with any national requirements for the intended market. Any Repairs by the end user, unless expressly approved by Baldor Electric Company, release Baldor Electric Company from responsibility to conformity. Authorized and qualified personnel only must perform repairs.

These motors are designed in accordance with appropriate governmental regulatory agencies. They meet the technical requirements of the appropriate agencies at completion of manufacturing and have been issued approval numbers and nameplates. Any changes to these motors, without the consent of Baldor Electric Company and the regulatory agencies may void these approvals and render these motors non-conforming and dangerous for use.

These motors are suitable for Group I with a maximum surface temperature of 150 °C. Typical motor marking is shown in Figure 1-2.

**Figure 1-2 Typical AC and DC Mine Motor Markings**



Specific motor type, frame designation, model number, date code electrical specifications, and serial number are marked on a separate nameplate. The certificate number provides additional information for example certificate numbers such as IECEX are in the form IECEXCCC.YY.nnnnX", where CCC is the Certification Body, YY the year the certificate is issued, nnnn the certificate number and "X" is present if there are special conditions. For the ANZEx scheme, a similar convention exists and the numbers are in the form of "ANZEx YY.nnnnX" The certificate number is assigned to the various Australian certification bodies. Refer to the certificate for details on marking code and conditions of certification.

**Specific Conditions of Use:**

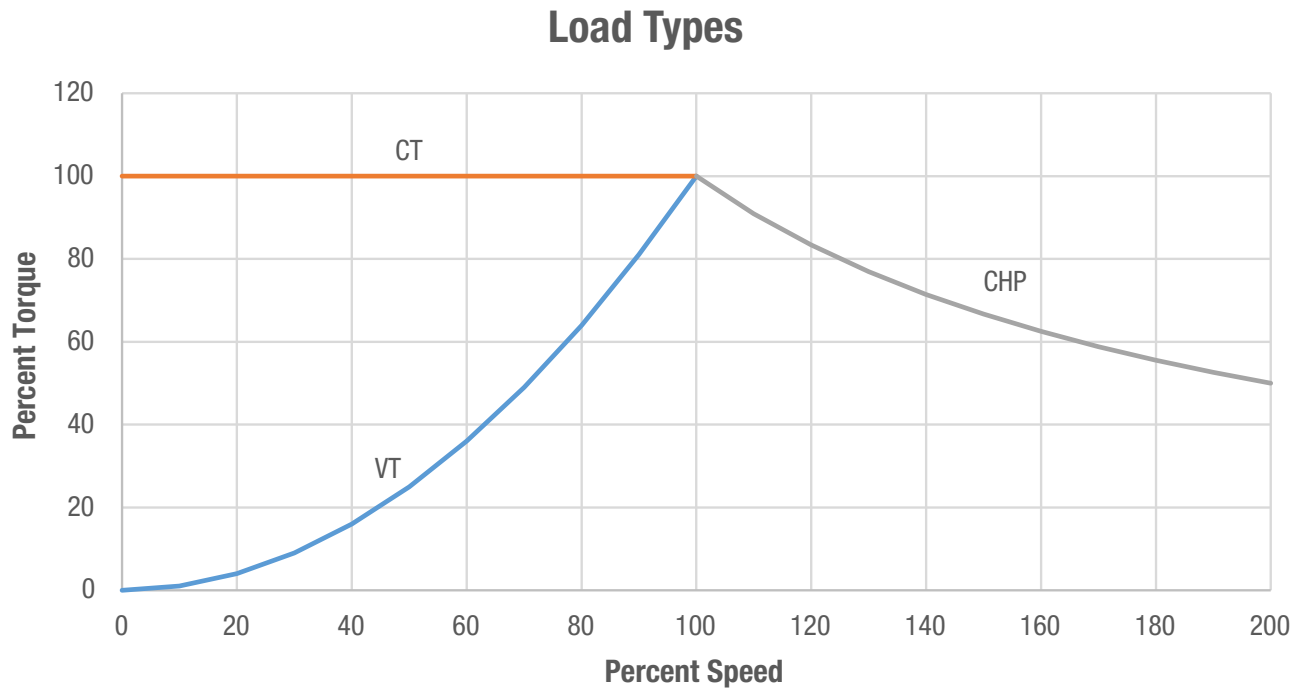
If the motor certificate number is followed by the symbol "X", this indicates that the motor has specific conditions of use which are indicated on the certificate. It is necessary to review the product certification certificate in conjunction with this instruction manual.

**Operation On Frequency Converters:**

If the motor is evaluated for operation with an adjustable speed drive, the type of converter (for example PWM for Pulse Width Modulated) and safe speed ranges (for example 0-120Hz) will be specified in the certification documents or on motor nameplates. It is necessary to consult the adjustable speed drive manual for proper set up. IECEX Certificates are available online at [www.iecex.com](http://www.iecex.com)

Typical Speed vs Torque Curves are shown in Figure 1-3. For values relative to your specific motor, consult the motor nameplate marking.

Figure 1-3 Typical Speed vs Torque Curves



**Acceptance Inspection**

All motors should be inspected for damage prior to connecting the motor to an electrical supply. All covers should be in place and access cover bolts torqued to their proper levels. On motors received with the shaft blocked by the factory, remove blocking before operating the motor. If motor is to be reshipped, alone or installed to another piece of equipment, the shaft must again be blocked against axial movement to prevent brinelling of the bearings during shipment.

**EMC Compliance Statement for European Union**

The motors described in this instruction manual are designed to comply 2014/30/EU . These motors are commercial in design and not intended for residential use. When used with converters, please consult converter manufacturers literature regarding recommendations on cable types, cable shielding, cable shielding termination, connection recommendations and any filters which may be recommended for EMC compliance. For additional information, consult Baldor MN1383.





# Section 2

## Installation & Operation

---

<b>WARNING:</b>	<b>Electrostatic discharge from belts and pulleys must be eliminated prior to operation in areas subject to the risk of explosion. Explosion may result in severe injury or death.</b>
<b>Caution:</b>	<b>Do not lift the motor and its driven load by the motor lifting hardware. The motor lifting hardware is adequate for lifting only the motor. Disconnect the load (gears, pumps, compressors, or other driven equipment) from the motor shaft before lifting the motor.</b>
<b>Overview</b>	Strict compliance with all local and national laws, regulations, and practices regarding the safe operation and maintenance of underground mining equipment is necessary to assure the personal safety of those working on, or around this equipment.
<b>Caution:</b>	<b>If eye bolts are used for lifting a motor, be sure they are securely tightened. The lifting direction should not exceed a 20 ° angle from the shank of the eye bolt or lifting lug. Excessive lifting angles can cause damage.</b>
<b>Installation</b>	<p>When a common base is used to mount the motor and driven equipment, do not use the lifting means provided on the motor. The assembly should be lifted by a sling around the base or by other lifting means provided on the base. Assure lifting in the direction intended in the design of the lifting means.</p> <p>Also use precautions to prevent hazardous overloads due to deceleration, acceleration or shock forces. Eyebolts, lifting lugs or lifting openings when provided on the motor, are intended only for lifting the motor and standard motor mounted accessories not exceeding, in total, 30% of the motor weight. These lifting provisions should never be used when lifting or handling the motor and other equipment (i.e., gears, pumps or other driven equipment) as single unit.</p> <p>When the motor is an integral part of the mining machine, it should be mounted as prescribed by the OEM manufacturer. Where motors are separately mounted, a foundation sufficiently rigid to prevent excessive vibration should be used.</p> <p>For Group I Mining Motors where breather drains are used specified, Breather drain shall be mounted or protected in installation such that it is guarded from direct impact.</p>
<b>Alignment</b>	<p>Accurate alignment of the motor with the driven equipment is extremely important. Forcibly driving the coupling or load onto the motor shaft will damage the bearings.</p> <p>After careful alignment, bolt motor securely in place. Use shims to fill any unevenness in the foundation. All motor feet should sit solidly on foundation before mounting bolts are tightened.</p> <p>The OEM must specify motor starter and overcurrent protection suitable for this motor and its application. Consult motor starter application data as well as applicable national and local codes.</p>
<b>WARNING:</b>	<b>Guards must be installed for rotating parts to prevent accidental contact by personnel. Accidental contact with body parts or clothing can cause serious or fatal injury.</b>
<b>Guarding</b>	Guards must be installed for rotating parts. This is particularly important where the parts have surface irregularities or hot surface temperatures.
<b>Power Connection</b>	<p>Motor and control wiring, overload protection, disconnects, accessories and grounding should conform to applicable national and local codes.</p> <p>Frames and accessories of motors must be earth bonded in accordance with recommended national and local codes. Motors must be properly grounded to earth by the OE mining equipment manufacturer and by qualified electricians during the field installation of replacement motors.</p> <p>Connect the motor to the power supply of identical characteristics, according to the connection diagram on the motor nameplate. Use Connection Diagrams at the end of this section.</p> <p>This motor must be properly grounded to earth prior to operation. The motor earthing connection cable or facility is located adjacent to the motor power terminals in the motor conduit box or lead connection area. The earthing connection must be securely tightened to prevent loosening.</p> <p>The machine cable providing power to the motor must incorporate an earthing conductor with a minimum cross-sectional area corresponding with the table below.</p>
<b>Grounding</b>	<p>In the USA consult MSHA requirements for information on grounding of motors. In making the ground connection, the installer should make certain that there is a solid and permanent metallic connection between the ground point, the motor or generator terminal housing, and the motor or generator frame. In non-USA locations consult the appropriate applicable national and local codes.</p> <p>Motors with resilient cushion rings usually must be provided with a bonding conductor across the resilient member. Some motors are supplied with the bonding conductor on the concealed side of the cushion ring to protect the bond from damage. Motors with bonded cushion rings should usually be grounded at the time of installation in accordance with the above recommendations for making ground connections. When motors with bonded cushion rings are used in multimotor installations employing group fusing or group protection, the bonding of the cushion ring should be checked to determine that it is adequate for the rating of the branch circuit over current protective device being used.</p> <p>There are applications where grounding the exterior parts of a motor or generator may result in greater hazard by increasing the possibility of a person in the area simultaneously contacting ground and some other nearby live electrical parts of other ungrounded electrical equipment. In portable equipment it is difficult to be sure that a positive ground connection is maintained as the equipment is moved, and providing a grounding conductor may lead to a false sense of security.</p>

Select a motor starter and over current protection suitable for this motor and its application. Consult motor starter application data as well as the National Electric Code and/or other applicable local codes. For motors installed in compliance with IEC requirements, the following minimum cross sectional area of the protective conductors should be used:

Crosssectional area of phase conductors, S	Minimum crosssectional area of the corresponding protective conductor, S <sub>p</sub>
mm <sup>2</sup>	mm <sup>2</sup>
6	6
10	10
16	16
25	25
35	25
50	25
70	35
95	50
120	70
150	70

Equipotential bonding connection shall made using a conductor with a cross-sectional area of at least 4 mm<sup>2</sup>. For mining motors intended for installation in mobile mining equipment, without an identified provision for bonding, these motors are intended to be bonded through the mechanical connection with the mining equipment, relying on the equipment being supplied by a cable incorporating an earthing or equipotential bonding conductor, which is connected inside the motor.

**Conduit Box**

For ease of making connections, an oversize conduit box may be provided. Some conduit boxes can be rotated 360 ° in 90 ° increments. Auxiliary conduit boxes are provided on some motors for accessories such as space heaters, RTD's etc.

**AC Power**

Motors with flying lead construction must be properly terminated and insulated. Connect the motor leads as shown on the connection diagram located on the name plate or inside the cover on the conduit box. Be sure the following guidelines are met:

1. AC power is within ±10% of rated voltage with rated frequency. (See motor name plate for ratings).  
OR
2. AC power is within ±5% of rated frequency with rated voltage.  
OR
3. A combined variation in voltage and frequency of ±10% (sum of absolute values) of rated values, provided the frequency variation does not exceed ±5% of rated frequency.

Performance within these voltage and frequency variations are shown in Figure 2-1.

**Rotation**

**AC Motor Only**

All three phase motors are reversible. To reverse the direction of rotation, disconnect and lock out power and interchange any two of the three line leads for three phase motors. For single phase motors, check the connection diagram to determine if the motor is reversible and follow the connection instructions for lead numbers to be interchanged. Not all single phase motors are reversible.

Adjustable Frequency Power Inverters used to supply adjustable frequency power to induction motors produce wave forms with lower order harmonics with voltage spikes superimposed. Turn-to-turn, phase-to-phase, and ground insulation of stator windings are subject to the resulting dielectric stresses.

Suitable precautions should be taken in the design of these drive systems to minimize the magnitude of these voltage spikes. Consult the OEM instructions for maximum acceptable motor lead lengths, and proper grounding.

**DC Power**

Check the motor nameplate and the SCR Control nameplate to be sure the voltage and type of power rating is the same for both. The power code of the motor and power source should be the same. The letter code for the control may be equal or less than the motor. For example a motor with a "C" power code may be used on a supply with a "C" or "A" or less code. Table 2-1 defines these codes.

**Table 2-1 Power Codes**

Code	Description
A	DC Generator, battery or twelve pulse/cycle 6 phase, full control
C	Six pulse/cycle, 3 phase, full control, 230VAC or 460VAC, 60Hz, input to rectifier.

---

When the armature power supply cannot be designated by a single letter code (A–K) the power source can be determined by the code stamped on the nameplate: M/N F–V–H–L

Where:

M Total pulses per cycle

N Total controlled pulses per cycle

F Free Wheeling (if used), F=used, blank=not used

V Nominal Line-to-Line voltage at input to rectifier

H Line frequency (in Hz)

L Value of inductance (in milli henries) to be added externally to the motor armature circuit

Example 1: “6/3 F-380-60-12”

Requires a power supply with 6 total pulses per cycle, 3 controlled pulses per cycle (S-3), with free wheeling, 380 volts, 60 Hz AC input to bridge, and a 12 millihenry choke to be added externally to the motor armature circuit. Performance within these voltage and frequency variations are shown in Figure 2-1.

**WARNING:**

**Motors with S2 30 Minute Rating Without Coolant Flow are thermally protected. It is intended that this duty and operation will permit repositioning of equipment in circumstances where interruption of coolant flow may be necessary. To ensure motors do not exceed the permissible maximum surface temperature for Group I equipment according to IEC 60079–0 they must be operated according to the duty cycle. In addition, it is critical the installation, use and maintenance allows free flow of air around the motors. Build-up of material such as coal dust that could also inhibit circulation must be removed before operation with this duty cycle. In addition, it is necessary to connect the motor thermal protection devices which act as a secondary measure to provide additional assurance that the permissible maximum surface temperature is not exceeded.**

Note: To provide proper cooling, always provide proper coolant flow. Before disconnecting coolant flow during repositioning of equipment do the following: 1) Ensure motor thermal devices are properly installed.  
2) Remove any debris on equipment and motor for maximum conduction of heat for brief periods when coolant flow is interrupted.

**Operation**

AC and DC Mine Motors are designed to operate in a normal mining environment. Loading and operation of motors should be in accordance with the nameplate data. The motor has been designed based on rating information, application data, and duty cycle analysis provided by the OEM. Proper motor cooling is required for normal operation of the motor.

Operation in excess of nameplate parameters is not recommended and may result in damage to the equipment and potential injury to operators and persons near the equipment. Safety related switching used by the OEM must actuate the relevant control devices without intermediate software command.

Where intermediate circuitry is involved the circuit shall fall within the scope of a safety, controlling and regulating device as defined in article 1(2) of European Directive 2014/34/EU, and shall be covered by an appropriate EC Type Examination Certificate.

**WARNING:**

**These motors are designed to operate at or below the maximum surface temperature stated in the ATEX directive in a normal mining application. Operation of these motors in excess of the nameplate parameters may cause the maximum allowable surface temperature to be exceeded, resulting in a risk of explosion.**

Temperature detection devices may be provided in these motors. The OEM determines the control setup to ensure operation within the thermal limit characteristics of the motor.

The following conditions are examples of improper motor operation:

1. Load imposed on the motor exceeds its nameplate value or motor power rating.
2. Ambient temperatures that exceed the nameplate temperature value.
3. Voltages  $\pm 10\%$  above or below the voltage(s) specified on the motor nameplate.
4. Voltage unbalanced conditions.
5. Insufficient or loss of coolant flow.
6. Adjustable frequency operation for motors designed for sine wave power only.
7. Altitude above 3000 ft (1000m).
8. Severe duty cycles and/or repeated starts.
9. Motor stall.
10. Motor reversing
11. Polyphase motors being operated in single phase condition
12. Operating motors on variable frequency drives with operating parameters other than those specified on the motor certification drawings
13. Improper alignment of motor mounting.

Note: Main power leads for CE Marked Motors may be marked U,V,W – for standard configurations, please consult connection diagrams.

## Connection Diagrams

### AC Motor Connection Diagram

#### IEC VERSUS NEMA LEAD MARKING

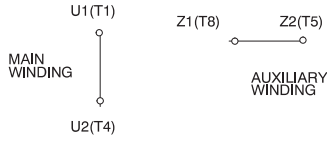
EXAMPLE COMPARISONS OF IEC AND NEMA LEADING MARKINGS FOR COMMON CONNECTION TYPES ARE SHOWN BELOW.

#### SINGLE PHASE MOTORS

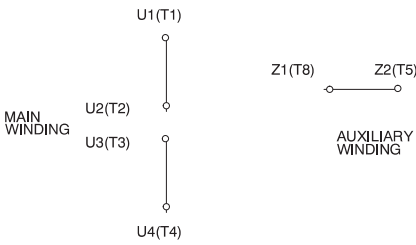
##### SINGLE VOLTAGE NON REVERSIBLE



##### SINGLE VOLTAGE REVERSIBLE



##### DUAL VOLTAGE REVERSIBLE



### AC Motor Connection Diagram

#### THREE PHASE

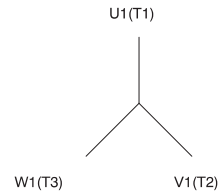
FOR SINGLE WINDING 3 PHASE MOTORS, LEAD MARKINGS CAN BE DIRECTLY TRANSLATED BETWEEN IEC AND NEMA DESIGNATIONS. FOR THESE MOTORS, THE LEAD MARKINGS ARE EQUIVALENT AS FOLLOWS:

U1=T1	U2=T4	U5=T7	U6=T10
V1=T2	V2=T5	V5=T8	V6=T11
W1=T3	W2=T6	W5=T9	W6=T12

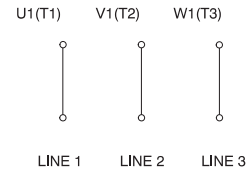
EXAMPLES OF COMMON CONNECTIONS ARE GIVEN BELOW.

#### THREE LEADS

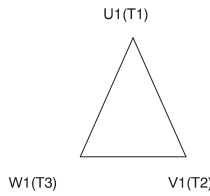
##### WYE CONNECT



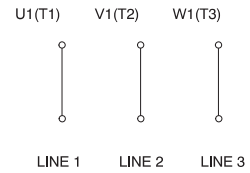
##### WIRING DIAGRAM



##### DELTA CONNECT



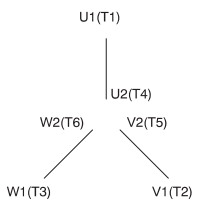
##### WIRING DIAGRAM



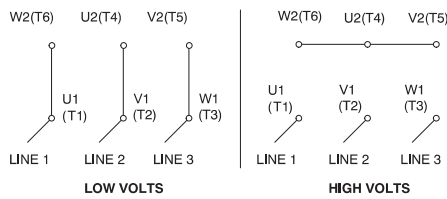
### AC Motor Connection Diagram

#### SIX LEADS

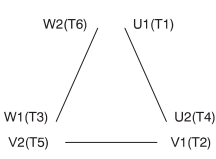
##### DELTA-WYE CONNECT



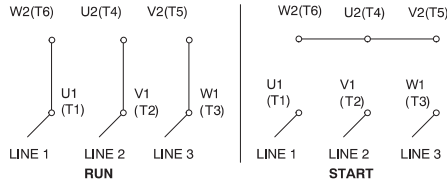
##### DUAL VOLTAGE-HIGH TO LOW VOLTAGE RATIO 1.73:1



##### WYE-DELTA CONNECT



##### WYE START-DELTA RUN SINGLE VOLTAGE

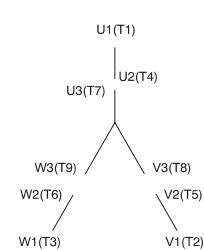


### AC Motor Connection Diagram

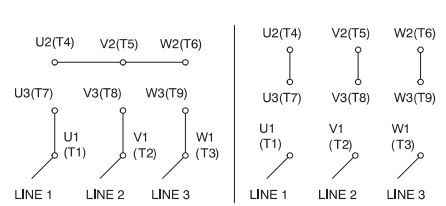
#### NINE LEADS

##### DUAL VOLTAGE-HIGH TO LOW VOLTAGE RATIO 2:1

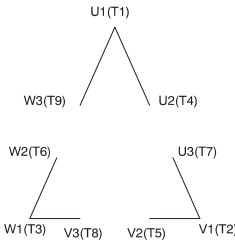
##### WYE CONNECT



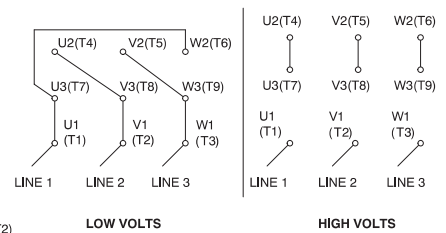
##### WIRING DIAGRAM



##### DELTA CONNECT



##### WIRING DIAGRAM

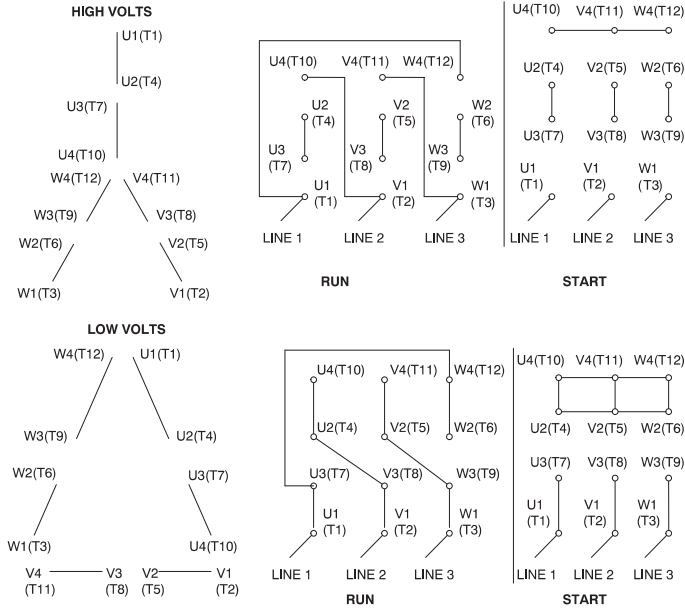


Connection Diagrams Continued

AC Motor Connection Diagram

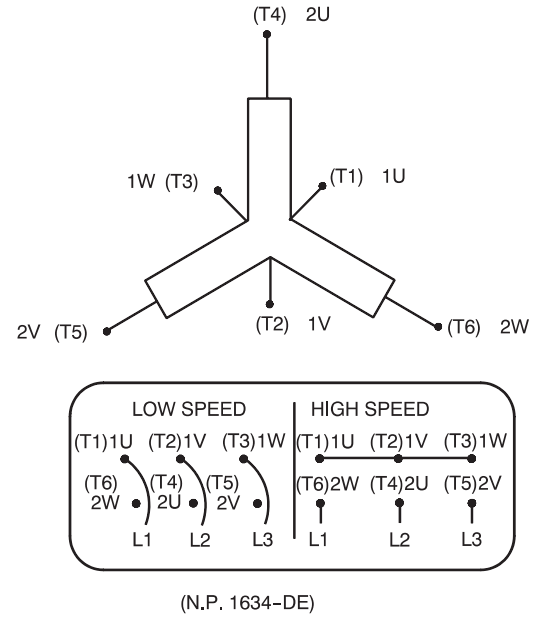
TWELVE LEADS

DUAL VOLTAGE WYE START - DELTA - RUN



AC Motor Connection Diagram

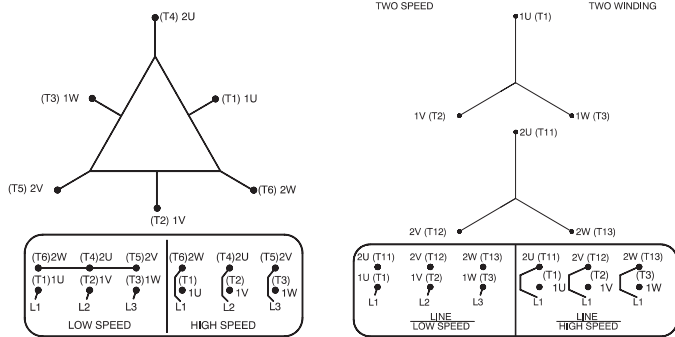
SINGLE WINDING MULTI-SPEEDS CONSTANT TORQUE



AC Motor Connection Diagram

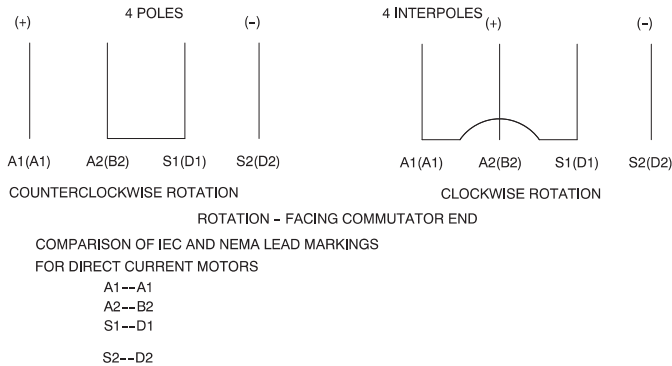
SINGLE WINDING

MULTI-SPEEDS CONSTANT HP.



DC Motor Connection Diagram

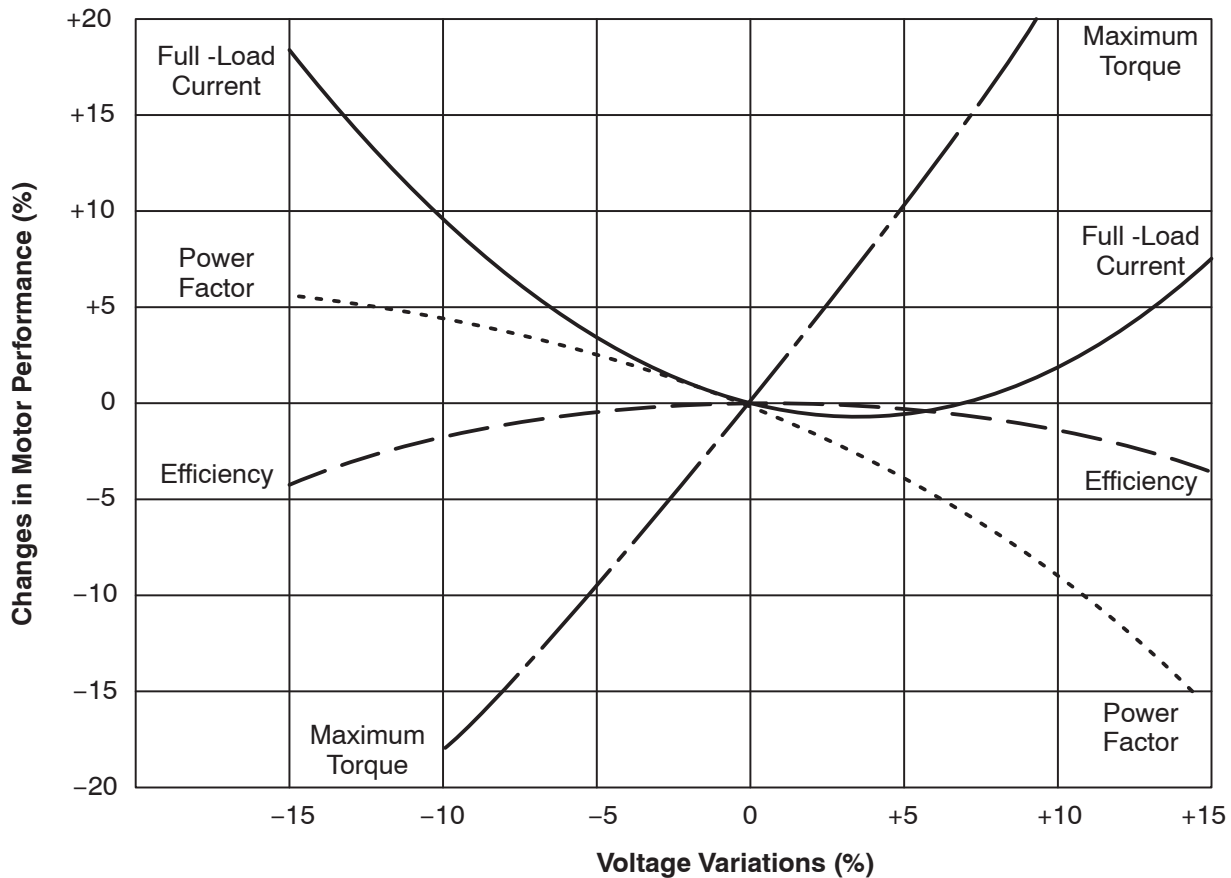
WIRING DIAGRAM TYPE "T" MOTOR



MOTOR WINDING THERMOSTATS		
CONTACTS _____ @ _____ °C		
FIGURE NUMBER _____		
CONTACT RATING		
VOLTS	CONTINUOUS AMPERES	INRUSH AMPERES
110 - 120	3.0	30
220 - 240	1.5	15
440 - 480	0.75	7.5
550 - 600	0.60	6.0

THERMOSTATS	
NORMALLY CLOSED	NORMALLY OPEN
<p>FIGURE 1</p> <p>P1 P2</p>	<p>FIGURE 4</p> <p>P1 P2</p>
<p>FIGURE 2</p> <p>P1 P2</p>	<p>FIGURE 5</p> <p>P1 P2</p>
<p>FIGURE 3</p> <p>P1 P2</p>	<p>FIGURE 6</p> <p>P1 P2</p>

Figure 2-1 Typical Motor Performance VS Voltage Variations



**First Time Start Up**

Be sure that all power to motor and accessories is off. Be sure the motor shaft is disconnected from the load and will not cause mechanical rotation of the motor shaft.

1. Make sure that the mechanical installation is secure. All bolts and nuts are tightened etc.
2. If motor has been in storage or idle for some time, check winding insulation integrity.
3. Inspect all electrical connections for proper termination, clearance, mechanical strength and electrical continuity.
4. Be sure all shipping materials and braces (if used) are removed from motor shaft.
5. Manually rotate the motor shaft to ensure that it rotates freely.
6. Replace all panels and covers that were removed during installation.
7. Momentarily apply power and check the direction of rotation of the motor shaft.
8. If motor rotation is wrong, be sure power is off and change the motor lead connections.
9. Verify rotation direction before you continue.
10. Start the motor and ensure operation is smooth without excessive vibration or noise.
11. If so, run the motor for 1 hour with no load connected.
12. After 1 hour of operation, disconnect power and connect the load to the motor shaft.
13. Verify all coupling guards and protective devices are installed. Ensure motor is properly ventilated.
14. If motor is totally enclosed fan-cooled or non-ventilated it is recommended that condensation drain plugs, if present, be removed. These are located in the lower portion of the end-shields. Totally enclosed fan-cooled "XT" motors are normally equipped with automatic drains which may be left in place as received.

**Initial Lubrication**

Baldor motors are shipped from the factory with the bearings properly packed with grease and ready to operate. Where the unit has been subjected to extended storage (6 months or more) the bearings should be relubricated (regreaseable type) prior to starting. When motors are equipped for oil mist lubrication refer to the instruction manual for installation, operation, and maintenance of oil mist lubrication systems.



---

## Test for General Condition

If the motor has been in storage for an extensive period or has been subjected to adverse moisture conditions, it is best to check the insulation resistance of the stator winding with a meg ohm meter. If the resistance is less than 5 meg ohms, the windings should be dried. Contact your OEM.

## Coupled Start Up

This procedure assumes a coupled start up. Also, that the first time start up procedure was successful.

1. Check the coupling and ensure that all guards and protective devices are installed.
2. Check that the coupling is properly aligned and not binding.
3. The first coupled start up should be with no load. Apply power and verify that the load is not transmitting excessive vibration back to the motor through the coupling or the foundation. Vibration should be at an acceptable level.
4. Run for approximately 1 hour with the driven equipment in an unloaded condition. The equipment can now be loaded and operated within specified limits. Do not exceed the name plate ratings for amperes for steady continuous loads.

## Jogging and Repeated Starts

Repeated starts and/or jogs of induction motors generally reduce the life of the motor winding insulation. A much greater amount of heat is produced by each acceleration or jog than by the same motor under full load. If it is necessary to repeatedly start or jog the motor, it is advisable to check the application with your local Baldor distributor or Baldor Service Center.

Heating Duty rating and maximum ambient temperature are stated on the motor name plate.

Do not exceed these values. If there is any question regarding safe operation, contact your local Baldor District Office or Baldor Service Center.

## Hazardous Locations

Hazardous locations are those where there is a risk of ignition or explosion due to the presence of combustible gases, vapors, dust, fibers or flyings.

### Selection

Facilities requiring special equipment for hazardous locations are typically classified in accordance with local requirements. This classification process lets the installer know what equipment is suitable for installation in that environment, and identifies what the maximum safe temperature or temperature class is required. It is the customer or users responsibility to determine the area classification and select proper equipment.

### Protection Concepts

#### Zone 1 [Equipment Group I (mining) or Equipment Protection Level (EPL) Gb, Mb]

BaldorReliance offers a range of motors suitable for installation in a mining environment. These motors are known as explosion proof or flameproof. Motors that are explosion proof or flameproof use specially machined flameproof joints between the end bell or bracket and the frame, as well as along the rotating shaft and at connection box covers and entries. The fit of these flameproof joints are designed to contain the combustion or quench the flame of an explosive gas atmosphere prior to it exiting the motor. These flameproof joints have lengths and widths selected and tested based on the gas group present in the atmosphere.

These motors are not gas tight. To the contrary, this protection concept assumes that due to the normal heating and cooling cycle of motor operation that any gas present will be drawn into the motor. Since flameproof or explosion proof motors are designed to contain the combustion and extinguish any flame transmission, for this protection concept, only external surface temperatures are of concern. Thermal limiting devices such as thermostats, thermistors or RTDs may be provided on these motors to limit the external surface temperature during overload conditions.

If thermostats are provided as a condition of certification, it is the installer's responsibility to make sure that these devices are properly connected to a suitable switching device. Flameproof motors are internationally referred to as Ex d. Representative motors are laboratory tested to verify that a flame is not transmitted outside the motor enclosure and to determine the maximum internal pressure encountered.

#### Sine Wave Power Operation for Hazardous Locations.

These motors are designed to operate at or below the maximum surface temperature (or T-Code) stated on the nameplate. Failure to operate the motor properly can cause this maximum surface temperature to be exceeded. If applied in a mining environment, this excessive temperature may cause ignition of hazardous materials. Operating the motor at any of the following conditions can cause the marked surface temperature to be exceeded.

1. Motor load exceeding service factor nameplate value
2. Ambient temperatures above nameplate value
3. Voltages above or below nameplate value
4. Unbalanced voltages
5. Loss of proper ventilation
6. Altitude above 3300 feet / 1000 meters
7. Severe duty cycles of repeated starts
8. Motor stall
9. Motor reversing
10. Single phase operation of polyphase equipment
11. Variable frequency operation

---

**Variable Frequency Power Operation for Hazardous Locations** (motors with maximum surface temperature listed on the nameplate).

Only motors with nameplates marked for use on inverter (variable frequency) power, and labeled for specific hazardous areas may be used in those hazardous areas on inverter power. The motor is designed to operate at or below the maximum surface temperature (150 °C) stated on the nameplate.

Failure to operate the motor properly can cause this maximum surface temperature to be exceeded.

If applied in a mining environment, this excessive temperature may cause ignition of hazardous materials. Operating the motor at any of the following conditions can cause the marked surface temperature to be exceeded.

1. Motor load exceeding service factor nameplate value
2. Ambient temperature above nameplate value
3. Voltage (at each operating frequency) above or below rated nameplate value
4. Unbalanced voltages
5. Loss of proper ventilation
6. Operation outside of the nameplate speed / frequency range
7. Altitudes above 3300 feet / 1000 meters
8. Single phase operation of polyphase equipment
9. Unstable current wave forms
10. Lower than name plate minimum carrier frequency

#### **Thermal Limiting**

Thermal limiting devices are temperature sensing control components installed inside the motor to limit the internal temperature of the motor frame by interrupting the circuit of the holding coil of the magnetic switch or contactor. They are required for most Division 1 and Zone 1 applications. For Division 2 or Zone 2 applications, motors should be selected that preclude running temperatures from exceeding the ignition temperatures for the designated hazardous material. In Division 2 or Zone 2 classified locations, thermal limiting devices should only be used for winding protection and not considered for limiting all internal motor temperatures to specific ignition temperatures.

#### **Equipotential Bonding and Shaft Current Reduction**

Larger motors (ie WP construction) may require proper bonding between motor enclosures and covers to avoid the risk of stray currents during start up. Fastening methods and bonding straps must not be modified. Bearing currents can exist in some motors for both line-fed and inverter-fed applications. Larger line-fed motors may require at least one insulated bearing to prevent a flow of current through the bearings. Do not defeat such insulation whether the motor is line-fed or inverter-fed applications. Inverter-fed motors may require additional bearing insulation or even a shaft brush. Do not defeat such features. When the motor and the coupled load are not on a common conductive base plate, it may also be necessary to electrically bond together the stationary parts of the motor and the coupled equipment.

### **Repair of Motors used in Hazardous Locations**

Repair of hazardous certified motors requires additional information, skill, and care. It is the customer's responsibility to select service shops with proper qualifications to repair hazardous location motors. Contact the manufacture for additional repair details. Use only original manufacturer's parts.

#### **Repair of Explosion Proof or Flame Proof Motors**

In the international markets using IEC based requirements, repair should be undertaken only after consulting IEC60079-19 Explosive Atmospheres-Part 19 Equipment repair, overhaul and reclamation. If use of a certified repair facility is desired, consult the IECEx Repair Scheme at

[http://www.iecex.com/service\\_facilities.htm](http://www.iecex.com/service_facilities.htm)

Explosion proof and flameproof motors achieve their safety based on the mechanical construction – flameproof joints and bearing clearance, and the electrical design including any thermal limiting devices. If it is necessary to repair a flameproof or explosion proof motor, it is critical that the mechanical flameproof joints be maintained. Consult Baldor Electric Company for flameproof joint construction details. Use only Baldor/Reliance supplied parts. Baldor/Reliance does not recommend reclamation of parts.

Since this protection method also relies on temperature being maintained, make sure that any rewinding uses the original electrical designs, including any thermal protection that may be present.

When explosion proof or flameproof motors are provided with intrinsically safe sensors, the integrity of that system relies upon the proper application and selection of barriers and cables as described in the sensor manufacturers control drawing. The control drawing will be shipped with the motor, and it is important that those instructions be provided to the equipment installer.



# Section 3

## Maintenance & Troubleshooting

**WARNING:** UL and EX Listed motors must only be serviced by UL or EX Approved Authorized Baldor Service Centers if these motors are to be returned to a hazardous and/or explosive atmosphere.

### General Inspection

Inspect the motor at regular intervals, approximately every 500 hours of operation or every 3 months, whichever occurs first. Keep the motor clean and the ventilation openings clear. The following steps should be performed at each inspection:

**WARNING:** Do not touch electrical connections before you first ensure that power has been disconnected. Electrical shock can cause serious or fatal injury. Only qualified personnel should attempt the installation, operation and maintenance of this equipment.

1. Check that the motor is clean. Check that the interior and exterior of the motor is free of dirt, oil, grease, water, etc. Oily vapor, paper pulp, textile lint, etc. can accumulate and block motor ventilation. If the motor is not properly ventilated, overheating and early failure can occur.
2. Perform a dielectric withstand test periodically to ensure that the integrity of the winding insulation has been maintained. Record the readings. Immediately investigate any significant decrease in insulation resistance.
3. Check all electrical connectors to be sure that they are tight.

### Maintenance DC Motors Only

Brush pressure is correctly established at the factory and maintained at the correct value throughout the life of the brush by means of a constant pressure design. Brushes and brush holders should be clean to allow brushes to move freely in the holders. Replace brushes with new brushes of the same grade before wear permits the rivet or tamped pigtail to score the commutator. It is recommended to replace all brushes at one time.

### Relubrication & Bearings

Bearing grease will lose its lubricating ability over time, not suddenly. The lubricating ability of a grease (over time) depends primarily on the type of grease, the size of the bearing, the speed at which the bearing operates and the severity of the operating conditions. Good results can be obtained if the following recommendations are used in your maintenance program.

#### Type of Grease

A high grade ball or roller bearing grease should be used. Use only OEM recommended grease. Do not mix greases unless compatibility has been checked and verified.

#### Relubrication Intervals

Recommended relubrication intervals are shown in Table 3-1. It is important to realize that the recommended intervals of Table 3-1 are based on average use. Refer to additional information in Tables 3-2 and 3-3.

**Table 3-1 Relubrication Intervals \***

Rated Power	Lubrication Frequency
1 – 10kW, ≤1800RPM	6 months
11 – 100kW, ≤1800RPM	3 months
>100kW, ≤1800RPM	1 month
All >1800 RPM	1 month

\* Relubrication intervals are for ball bearings.

For roller bearings, divide the relubrication interval by 2.

\*\* For motors operating at speeds greater than 3600 RPM, contact OEM for relubrication recommendations.

**Table 3-2 Service Conditions**

Severity of Service	"Hours per day of Operation"	"Ambient Temperature Maximum"	"Atmospheric Contamination"
Standard	8	40 °C	Clean, Little Corrosion
Severe	16 Plus	50 °C	Moderate dirt, Corrosion
Extreme	16 Plus	">50 °C or Class H Insulation"	"Severe dirt, Abrasive dust, Corrosion, Heavy Shock or Vibration"
Low Temperature		<-29 °C	

**Table 3-3 Relubrication Interval Multiplier**

Severity of Service	Multiplier
Standard	1.0
Severe	0.5
Extreme	0.1
Low Temperature	1.0

Some motor designs use different bearings on each motor end. This is normally indicated on the motor nameplate. In this case, the larger bearing is installed on the motor Drive endplate. For best relubrication results, only use the appropriate amount of grease for each bearing size (not the same for both).

**Caution:** **To avoid damage to motor bearings, grease must be kept free of dirt. For an extremely dirty environment, contact your OEM for additional information.**

### **Relubrication Procedure**

Be sure that the grease you are adding to the motor is compatible with the grease already in the motor. Consult OEM if a grease other than the recommended type is to be used.

**Caution:** **Do not over-lubricate motor as this may cause premature bearing failure.**

#### **With Grease Outlet Plug**

1. With the motor stopped, clean all grease fittings with a clean cloth.
2. Remove grease outlet plug.

**Caution:** **Over-lubricating can cause excessive bearing temperatures, premature lubrication breakdown and bearing failure.**

3. Add the recommended amount of grease.
4. Operate the motor for 15 minutes with grease plug removed. This allows excess grease to purge.
5. Re-install grease outlet plug.

#### **Without Grease Provisions**

1. Disassemble the motor.
2. Add recommended amount of grease to bearing and bearing cavity. (Bearing should be about 1/3 full of grease and outboard bearing cavity should be about 1/2 full of grease.)
3. Assemble the motor.

### **Sample Relubrication Determination**

Assume - NEMA 286T (IEC 180), 1750 RPM motor driving an exhaust fan in an ambient temperature of 43 °C and the atmosphere is moderately corrosive.

1. Table 3-2 list 9500 hours for standard conditions.
2. Table 3-3 classifies severity of service as "Severe".
3. Approximately 1.2 in<sup>3</sup> or 3.9 teaspoon of grease is to be added.

Note: Smaller bearings in size category may require reduced amounts of grease.

**Table 3-4 Troubleshooting Chart**

Symptom	Possible Causes	Possible Solutions
Motor will not start	"Usually caused by line trouble, such as, single phasing at the starter."	"Check source of power. Check overloads, fuses, controls, etc."
Excessive humming	High Voltage.	Check input line connections.
	Eccentric air gap.	Have motor serviced at local Baldor service center.
Motor Over Heating	"Overload. Compare actual amps (measured) with nameplate rating."	"Locate and remove source of excessive friction in motor or load. Reduce load or replace with motor of greater capacity."
	Single Phasing.	"Check current at all phases (should be approximately equal) to isolate and correct the problem."
	Improper ventilation.	"Check external cooling fan to be sure air is moving properly across cooling fins. Excessive dirt build-up on motor. Clean motor."
	Unbalanced voltage.	"Check voltage at all phases (should be approximately equal) to isolate and correct the problem."
	Rotor rubbing on stator.	Check air gap clearance and bearings.
		Tighten "Thru Bolts".
	Over voltage or under voltage.	Check input voltage at each phase to motor.
	Open stator winding.	"Check stator resistance at all three phases for balance."
	Grounded winding.	Perform dielectric test and repair as required.
	Improper connections.	"Inspect all electrical connections for proper termination, clearance, mechanical strength and electrical continuity. Refer to motor lead connection diagram."
Bearing Over Heating	Misalignment.	Check and align motor and driven equipment.
	Excessive belt tension.	Reduce belt tension to proper point for load.
	Excessive end thrust.	Reduce the end thrust from driven machine.
	Excessive grease in bearing.	Remove grease until cavity is approximately 3/4 filled.
	Insufficient grease in bearing.	Add grease until cavity is approximately 3/4 filled.
	Dirt in bearing.	"Clean bearing cavity and bearing. Repack with correct grease until cavity is approximately 3/4 filled."
Vibration	Misalignment.	Check and align motor and driven equipment.
	"Rubbing between rotating parts and stationary parts."	Isolate and eliminate cause of rubbing.
	Rotor out of balance.	"Have rotor balance checked and repaired at your Baldor Service Center."
	Resonance.	"Tune system or contact your Baldor Service Center for assistance."
Noise	"Foreign material in air gap or ventilation openings."	"Remove rotor and foreign material. Reinstall rotor. Check insulation integrity. Clean ventilation openings."
Growling or whining	Bad bearing.	"Replace bearing. Clean all grease from cavity and new bearing. Repack with correct grease until cavity is approximately 3/4 filled."



# Section 4

## Appendix - IEC 60079 Series

---

### INFORMATION REQUIRED PER IEC 60079-0:2017 Ed7

All *italicized* information below is quoted from the standard, clause 30.

Clause 30 (instructions) – Instructions are provided with each motor, the most recent version of this manual can be download at baldor.com.

Instructions for purposes of this standard consists of the following that are shipped with your motor in the literature package:

- Instruction Manual MN404
- Ex Certificates applicable for your motor
- Nameplate marking photos for your motor

#### *Clause 30.1 (general)*

***The instructions prepared by the manufacturer shall include the following particulars as a minimum.***

#### ***Marking***

***A recapitulation of the information with which the equipment is marked, except for the serial number (see Clause 29), together with any appropriate additional information to facilitate maintenance (for example, address of the importer, repairer, etc.)***

A copy of the nameplates is included in the literature package and is shipped with each motor. These instructions are used for a range of mining motors. An example of typical certification marking is shown in Section 1. For motor specific information, please refer to the certification nameplate photos, electrical rating information and any specific conditions conveyed in the motor marking such as but not limited to ambient range, water flow, converter set up parameters and refer to the data package shipped with the product.

#### ***on-site assembling:***

Not typically required.

#### ***installation and erection:***

***iii) guidance for the selection of flameproof entry devices for termination compartments with reference pressure greater than ...1 333 kPa for Group I***

The reference pressure encountered in this range of motors is below 1 333 kPa.

#### ***adjustment and parameter setting***

If operated on a converter, refer to nameplate marking for set-up parameters.

#### ***putting into service - of the equipment / of the whole installation:***

***i) information about verifications / tests prior to (first) use***

Refer to Section 2, Installation and Operation

***ii) detailed information about any special installation requirements for the Type of Protection(s) employed***

For flanged joints, inspect with feeler gauge 0,40mm maximum

#### ***Use and setting-up;***

Ratings such as electrical values, ambient temperatures and pressures, maximum surface temperatures and other limit values related to a designated use are included on the product nameplate photos and in the product data package..

---

- ***maintenance;***

***ii) Information such as cleaning, oil level check or recalibration requirements;***

Information on bearing inspection is in the Maintenance Section 3

***iii) Requirements for the maintenance of the explosion protection.***

Flameproof joints should be inspected during repair and overhaul contact manufacturer for schedule drawings if needed for repair.

- ***repair***

***i) Repair should be conducted in accordance with the requirements given in IEC 60079-19***

Refer to Repair of Motors used in Hazardous Locations

Information related to the fitting or removal of parts / components; As each motor design is unique, it is necessary to Contact the manufacture for additional repair details. Use only original manufacturer's parts.

***ii) information related to the fitting or removal of parts / components***

Contact ABB regarding any spare parts.

***iii) Information about spare parts***

Contact ABB regarding any spare parts.

***iv) Requirements for a documentation of such repairs.***

As any repair is undertaken after consultation with IEC60079-19, the documentation requirements for the repair in this standard apply.

- ***taking out of service and dismantling***

***i) Use appropriate lock out tag out procedures to prevent restart and prior to making or breaking any electrical connection.***

• ***where applicable, Specific Conditions of Use according to 29.3 e)***

As Specific Conditions of Use may vary with each certificate, if Specific Conditions are applied, the certificate is shipped with each motor forming part of the Instructions. Refer to Marking and Acceptance section for an explanation of the "X" suffix to certificate numbers.

### ***Clause 30.3 (electrical machines)***

***In addition to the information required according to 30.1, the following additional information shall be prepared for electrical machines, as applicable:***

***machines intended to be supplied by a converter***

For speed torque information on motors intended to be supplied by converter, consult motor nameplate.

***bearing lubrication requirements for both commissioning and maintaining;***

Instructions for lubrication are included in the Bearing Maintenance Section. Only use ABB recommended grease or contact ABB Motors and Mechanical Inc., product support team for guidance on equivalents suitable for hazardous locations.

*the permitted axial and radial loading of the shaft;*

**Table 4-1 Table to Address Permissible Radial and Axial Shaft Loads**

AC Motors			DC Motors		
Frame Size	Permissible Radial Shaft Load (kN)*	Permissible Axial Shaft Thrust (kN)*	Frame Size	Permissible Radial Shaft Load (kN)*	Permissible Axial Shaft Thrust (kN)*
150	0.60	0.67	41-6,9	2.00	1.00
188	0.70	0.67	48-9,12	2.00	1.00
210	0.80	0.67	51-7,11,15	2.00	1.60
X215TCZ	0.90	0.67	51-9	2.00	1.60
240	0.95	0.67			
250	1.00	0.67			
0280	1.00	1.00			
X286TCZ	1.40	1.00			
320	1.60	1.00			
X326TCZ	1.70	1.00			
350	1.90	1.00			
360	2.00	1.00			
400	4.50	1.00			
440	4.50	3.00			
470	4.80	3.00			
500	5.00	3.00			
580	7.50	4.00			
Laminated Frame AC Motors					
Frame Size	Permissible Radial Shaft Load (kN)*	Permissible Axial Shaft Thrust (kN)*			
XRL250AY	4.30	1.60			
XL320AY	3.80	1.50			
XL360AY	11.60	15.00			

\*Permissible shaft loads are for specified frame size mounted horizontally and are calculated for an extended service life of 17,500 operating hours of bearing according to DIN ISO 281. Consult engineering for application specific solutions that require larger permissible shaft loads than those provided in this table. This table assumes pure radial loading for permissible radial shaft loads and pure axial loading for permissible axial shaft thrust.

- the thermal expansion of the shaft and housing under rated conditions***

Maintain minimum clearances necessary to accommodate thermal growth of up to 3mm of the frame and up to 5mm of the shaft during design operating conditions. Consult engineering for application specific solutions where these minimum clearances are not permissible.
- any necessary maintenance of the protection provided by the manufacturer against stray circulating currents in the bearings or shafts.***

Ensure that the motor is properly earthed and bonded. For motors operated by converter, consult converter manufacturers instructions relative to cable recommendations.
- any necessary protection of the bearings from vibration, including during transportation, storage, or standby service;***

Protection of bearings from vibration during storage and transportation are addressed in General. Bearings requiring blocking are blocked during shipment.

- 
- ***guidance on maintenance and replacement intervals for bearings based on the operating conditions.***

Instructions for lubrication are included in the Bearing Maintenance Section

#### **INFORMATION REQUIRED PER IEC 60079-1:2014**

If it is necessary to repair a flameproof or explosion proof motor, it is critical that the mechanical flameproof joints be maintained. Consult ABB Motors and Mechanical Inc., product support team for flameproof joint construction details. Use only Baldor/Reliance supplied parts. ABB does not recommend reclamation of Baldor/Reliance parts.





---

**ABB Motors and Mechanical Inc.**

5711 R.S. Boreham, Jr. Street

Fort Smith, AR 72901

Ph: 1.479.646.4711

**[new.abb.com/motors-generators](http://new.abb.com/motors-generators)**

**Additional information**

We reserve the right to make technical changes or modify the contents of this document without prior notice. With regard to purchase orders, the agreed particulars shall prevail. ABB does not accept any responsibility whatsoever for potential errors or possible lack of information in this document.

We reserve all rights in this document and in the subject matter and illustrations contained therein. Any reproduction, disclosure to third parties or utilization of its contents – in whole or in parts – is forbidden without prior written consent of ABB.

© Copyright 2019 ABB. All rights reserved.  
Specifications subject to change without notice.

