

# Type KOR-15C

## Outdoor current transformer

### Product features

- 25 kV outdoor
- 150 kV BIL, 60 Hertz
- Primary amperes: 5 - 1200
- Electrical clearances:
  - Strike: 18.0" ( 457 mm)
  - Creep: 26.88" (683 mm)

### Application

The KOR-15C outdoor current transformer is designed for metering and relaying on outdoor 25 kV circuits and is available in single and dual ratio designs. Dual ratio designs are accomplished by tapping the secondary winding.

### Construction features

Primary and secondary windings are assembled around a toroidal core and attached to a support frame. For insulation and protection, the assembly is vacuum cast in polyurethane.

### Terminals

Primary terminals are electro-tin-plated copper. Clamp-type secondary terminals accommodate #14 through #1 wire. Terminal screws are slotted, hex-head type. The X2-X3 terminals form the standard tap connections when the transformer is tapped.

### Junction box

The junction box is provided with 1" pipe thread conduit hubs on each end and a knock-out for fitting a conduit connection from the bottom. It may be detached for ease of installation and changeout procedures.

### Baseplate

The base is constructed of corrosion-resistant aluminum and is secured to the encapsulated base support.



### Mounting

The KOR-15C can be mounted in upright, cantilever, or upside-down positions. Stress relief devices should be used to support cable connections.

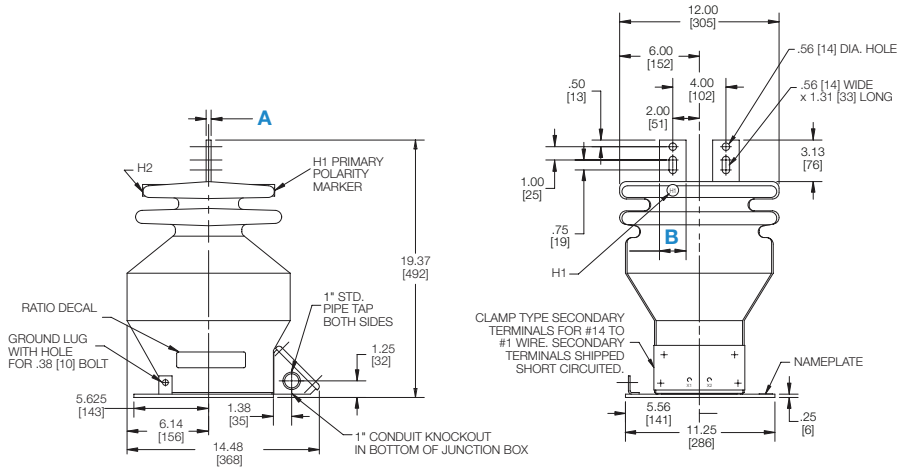
### Test reports

IEEE test reports are stored electronically and can be e-mailed in various formats at the time of shipment.

### Standards

This unit can be tested to all applicable IEEE, CSA, or IEC standards as requested.

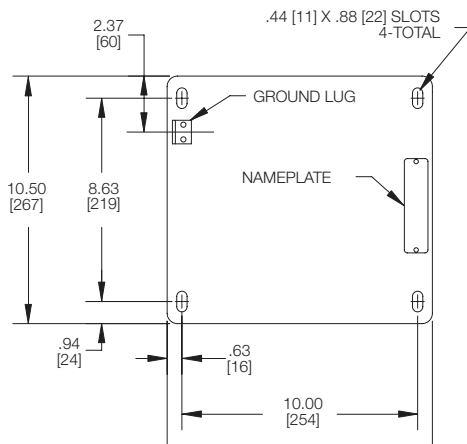
## Dimensions



Type KOR-15C

### Bar dimensions

Primary ampere rating	A		B		Weight	
	(in)	(mm)	(in)	(mm)	(lb)	(kg)
5 - 100	0.25	6	1.5	38	90	41
150 - 1200	0.375	10	2.0	51	95	43



Baseplate dimensions

Selection guide

Primary ampere rating	Rating factor @ 30° C	IEEE metering accuracy	IEEE relay accuracy	Thermal rating*	Mechanical rating*	Style number
<b>Type KOR-15C</b>						
5	3.0	0.3B-0.9	C100	100	290	923A185G01
10	3.0	0.3B-0.9	C100	100	290	923A185G02
15	3.0	0.3B-0.9	C100	100	290	923A185G03
20	3.0	0.3B-0.9	C100	100	290	923A185G04
25	3.0	0.3B-0.9	C100	100	290	923A185G05
30	3.0	0.3B-0.9	C100	100	290	923A185G06
40	3.0	0.3B-0.9	C100	100	290	923A185G07
50	3.0	0.3B-0.9	C100	100	290	923A185G08
75	3.0	0.3B-0.9	C100	100	290	923A185G09
100	3.0	0.3B-0.9	C100	100	290	923A185G10
150	3.0	0.3B-0.9	C100	100	290	923A185G11
200	3.0	0.3B-0.9	C100	100	290	923A185G12
300	3.0	0.3B-0.9	C100	100	290	923A185G13
400	3.0	0.3B-0.9	C100	100	290	923A185G14
500	3.0	0.3B-0.9	C100	100	290	923A185G15
600	3.0	0.3B-0.9	C100	100	290	923A185G16
800	1.5	0.3B-0.9	C200	100	290	923A185G17
1200	1.0	0.3B-0.9	C200	100	290	923A185G18
<b>Type KOR-15C (dual ratio)</b>						
		0.3B-0.9				
5/10	3.0/1.5	0.3B-1.8	C100/C200	100	290/145	923A186G01
		0.3B-0.9				
10/20	3.0/1.5	0.3B-1.8	C100/C200	100	290/145	923A186G02
		0.3B-0.9				
20/40	3.0/1.5	0.3B-1.8	C100/C200	100	290/145	923A186G03
		0.3B-0.9				
25/50	3.0/1.5	0.3B-1.8	C100/C200	100	290/145	923A186G04
		0.3B-0.9				
50/100	3.0/1.5	0.3B-1.8	C100/C200	100	290/145	923A186G05
		0.3B-0.9				
75/150	3.0/1.5	0.3B-1.8	C100/C200	100	290/145	923A186G06
		0.3B-0.9				
100/200	3.0/1.5	0.3B-1.8	C100/C200	100	290/145	923A186G07
		0.3B-0.9				
150/300	3.0/1.5	0.3B-1.8	C100/C200	100	290/145	923A186G08
		0.3B-0.9				
200/400	3.0/1.5	0.3B-1.8	C100/C200	100	290/145	923A186G09
		0.3B-0.9				
300/600	3.0/1.5	0.3B-1.8	C100/C200	100	290/145	923A186G10
		0.3B-0.9				
400/800	3.0/1.5	0.3B-1.8	C100/C200	100	290/145	923A186G11
		0.3B-0.9				
600/1200	2.0/1.0	0.3B-1.8	C100/C200	100	290/145	923A186G12

Note: 50 Hz designs available

\* times normal, 1 second

\* times normal

Additional styles available upon request. Contact your ABB sales representative or call +1-252-827-3212 for more information.

For more information please contact:

**ABB Inc.**

**Medium Voltage Distribution Components**

3022 NC 43 North

Pinetops, NC 27864

USA

Phone: +1 252 827 3212

Fax: +1 252 827 4286

**[www.abb.com/mediumvoltage](http://www.abb.com/mediumvoltage)**

**Note:**

We reserve the right to make technical changes or modify the contents of this document without prior notice. With regard to purchase orders, the agreed particulars shall prevail. ABB does not accept any responsibility whatsoever for potential errors or possible lack of information in this document. We reserve all rights in this document and in the subject matter and illustrations contained therein. Any reproduction—in whole or in parts—is forbidden without ABB's prior written consent.

Copyright 2014 ABB.

All rights reserved.