

INSTRUCTION

Softstarter Firmware Upgrade

SoftstarterCare

Contents

1. Firmware upgrade.....	2
1.1. How to upgrade PSTX firmware	2
1.2. How to upgrade PSE firmware	5
2. Additional Information	10
2.1. Listing of related documents.....	10
3. Revisions	10

PREPARED	STATUS	SECURITY LEVEL		
2022-02-10 Gustaf Soderlund	Approved	Public		
APPROVED	DOCUMENT KIND			
2022-02-21 Arshad Simitko	Technical Instruction			
OWNING ORGANIZATION	DOCUMENT ID.	REV.	LANG.	PAGE
Motor Starting & Safety	2CMT001197D0169	C	en	1/10

1. Firmware upgrade

Download and install the softstarter configuration tool SoftstarterCare from ABB Library. The latest softstarter firmware is also downloaded from ABB Library but requires ABB personnel privilege. Please click the following links to download the required firmware.

- [SoftstarterCare™ – Service Engineer Tool](#)
- [ABB Softstarter firmware - PSTX](#)
- [ABB Softstarter firmware - PSE](#)

1.1. How to upgrade PSTX firmware

The following sections explain how to perform a firmware upgrade on an ABB PSTX Softstarter.

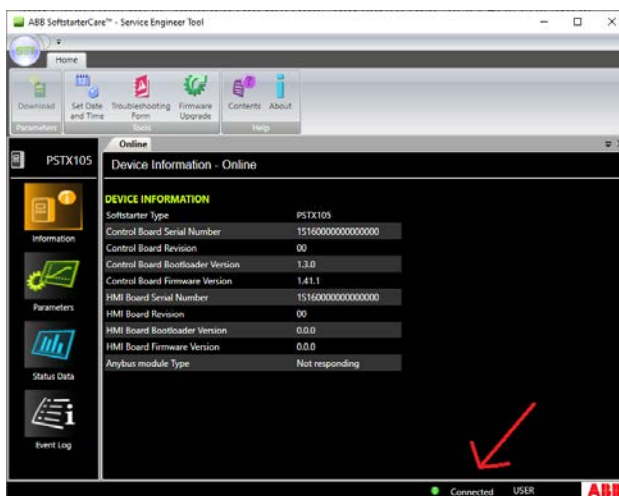
1.1.1. Control board firmware v1.22 and higher

1. Ensure that the PSTX softstarter is disconnected from operational voltage and control supply voltage (100-250V).
2. Set the PSTX HMI in boot mode.



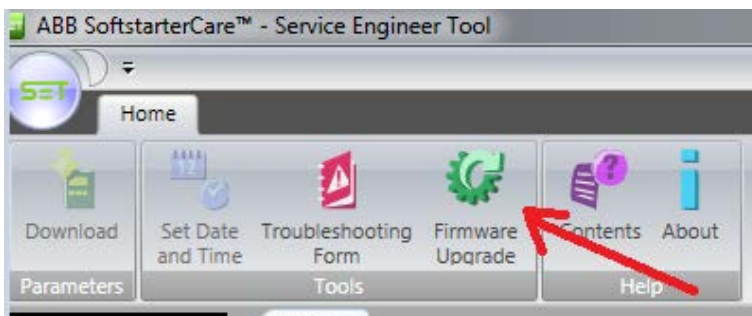
Hold both the stop and L/R button when connecting the USB cable between the PC and the PSTX HMI. This will set the HMI in boot mode and all four LEDs (Ready, Run, Protection and Fault) will be lit. Release the buttons and verify that all 4 LEDs still are lit.

3. Start SoftstarterCare and confirm that the softstarter is connected.

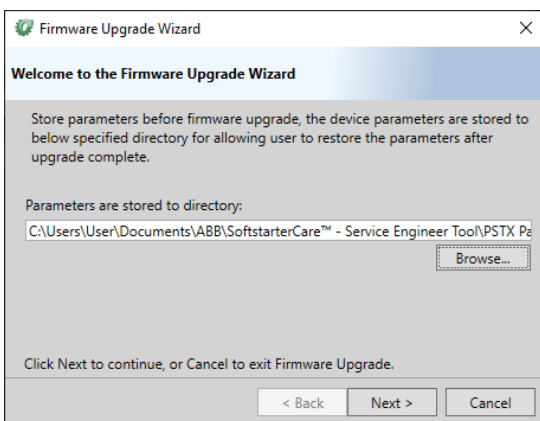


STATUS	SECURITY LEVEL	DOCUMENT ID.	REV.	LANG.	PAGE
Approved	Public	2CMT001197D0169	C	en	2/10

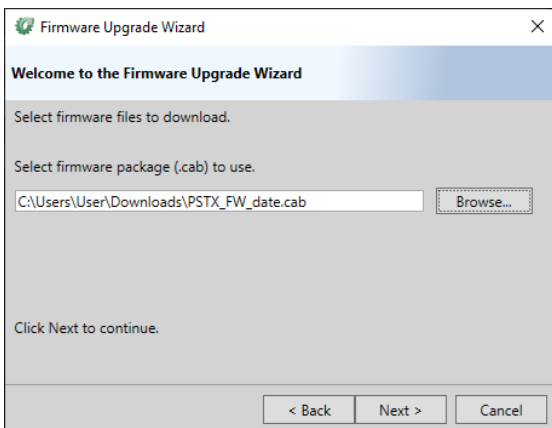
- Click on Firmware upgrade to start the firmware upgrade wizard.



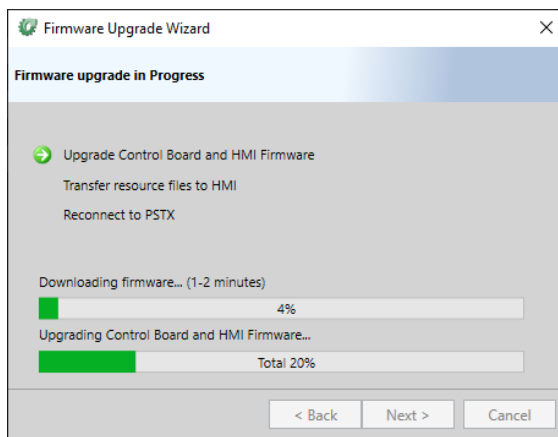
- Select the directory SoftstarterCare will use to store the Softstarter parameter configuration and click Next.



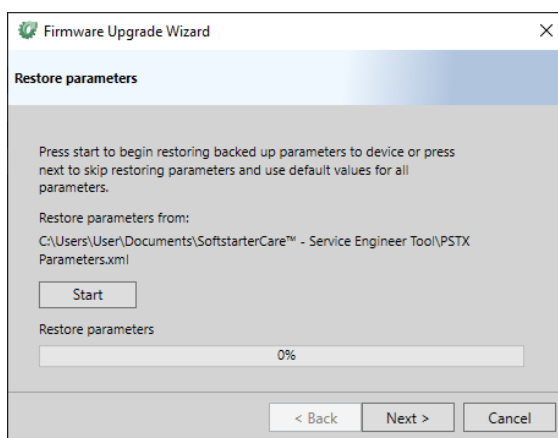
- Select the firmware (.cab) file downloaded from ABB Library and click Next.



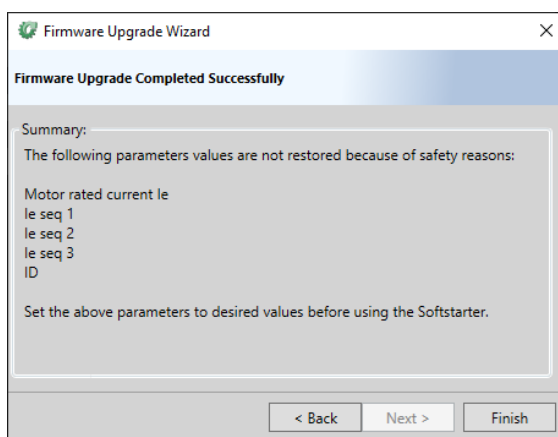
7. The firmware upgrade is now in progress and takes about 5 minutes to complete.



8. Click the Start button to restore the parameter configuration.



9. The upgrade is now completed. Click Finish to close the Firmware upgrade wizard.



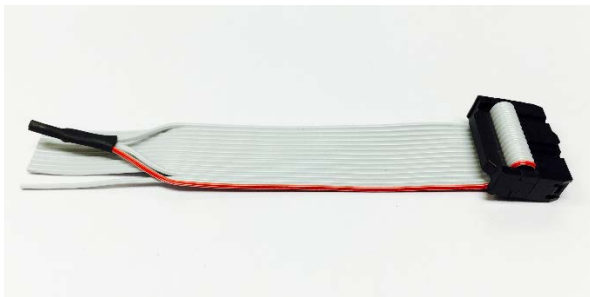
STATUS	SECURITY LEVEL	DOCUMENT ID.	REV.	LANG.	PAGE
Approved	Public	2CMT001197D0169	C	en	4/10

1.1.2. Control board firmware v1.22 and lower

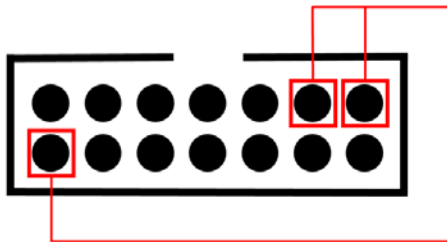
IMPORTANT: This instruction shall only be used for softstarters with control board firmware version lower than 1.22.0.

SoftstarterCare has very limited support for softstarters with old control board firmware, i.e., parameters backup/restore is not supported, only firmware upgrade is supported. In addition to the firmware upgrade instruction of softstarters with new control board firmware, two additional steps are needed for old control board firmware to not lose parameter configuration during firmware upgrade.

1. Write down all modified parameters. These parameters must be manually restored after firmware upgrade. To list the modified parameters, use the HMI and navigate to Menu->Parameters->Modified.
2. Ensure that the PSTX softstarter is disconnected from operational voltage and control supply voltage (100-250V).
3. Connect a jumper cable to the COM2 port to set the control board in boot mode. Contact softstarters support (se-softstarters-support@abb.com) to order one.



If you don't have the cable, it's still possible to get into boot mode by connecting the 3 pins shown in the picture below.

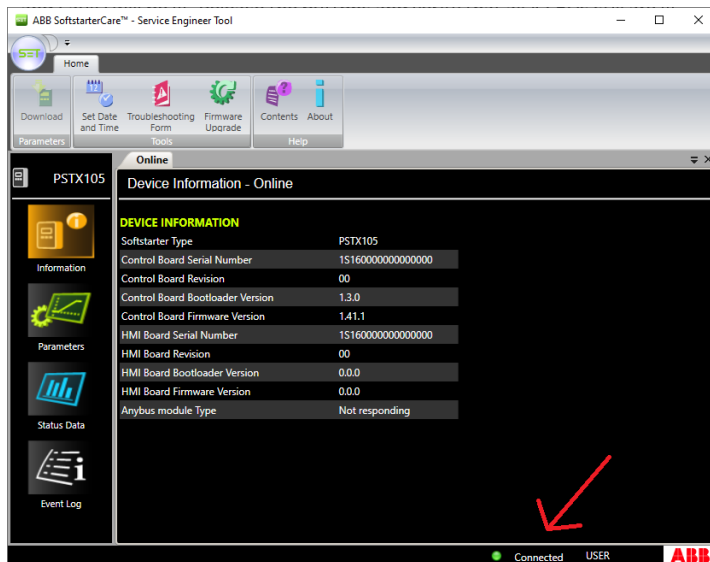


4. Set the PSTX HMI in boot mode.

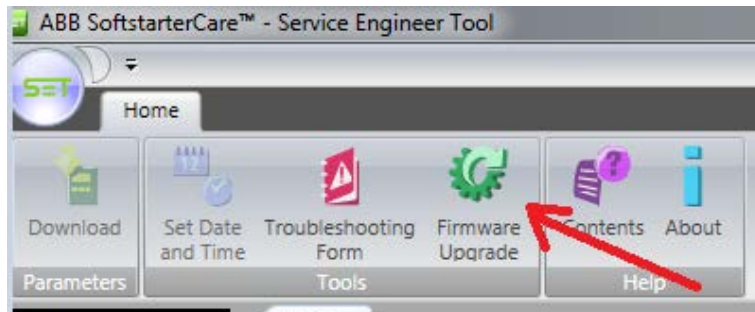


Hold both the stop and L/R button when connecting the USB cable between the PC and the PSTX HMI. This will set the HMI in boot mode and all four LEDs (Ready, Run, Protection and Fault) will be lit. Release the buttons and verify that all 4 LEDs still are lit.

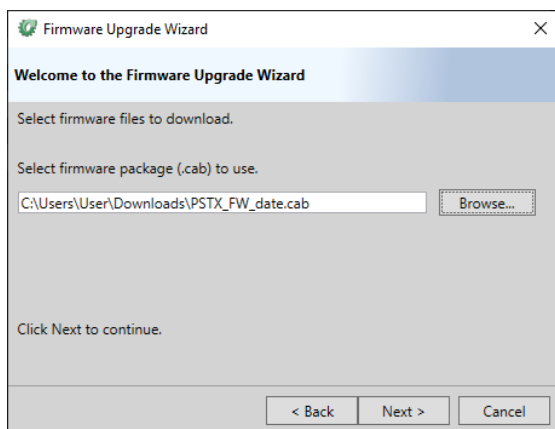
5. Disconnect the jumper cable from the COM2 port on the control board.
6. Start SoftstarterCare and confirm that the softstarter is connected.



7. Click on Firmware upgrade to start the firmware upgrade wizard.

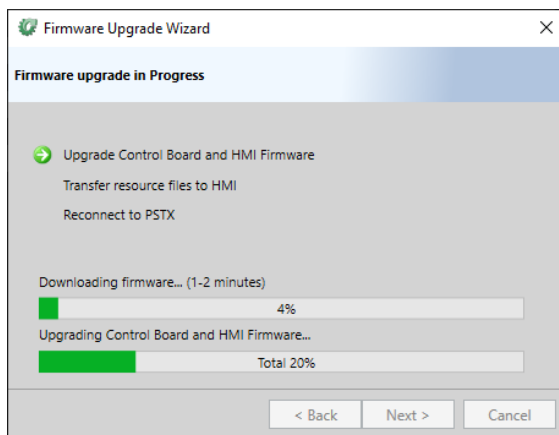


8. Select the firmware (.cab) file downloaded from ABB Library and click Next.

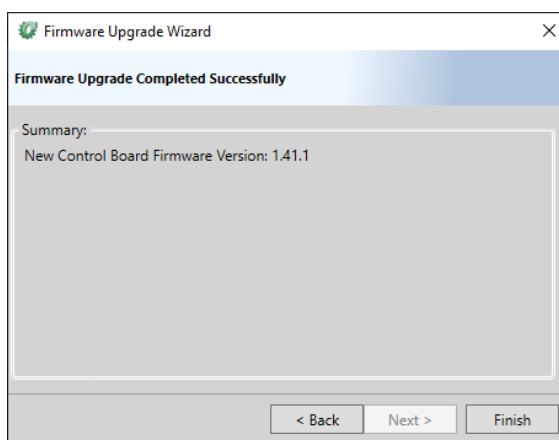


STATUS	SECURITY LEVEL	DOCUMENT ID.	REV.	LANG.	PAGE
Approved	Public	2CMT001197D0169	C	en	6/10

9. The firmware upgrade is now in progress and takes about 5 minutes to complete.



10. The upgrade is now completed. Click Finish to close the Firmware upgrade wizard.

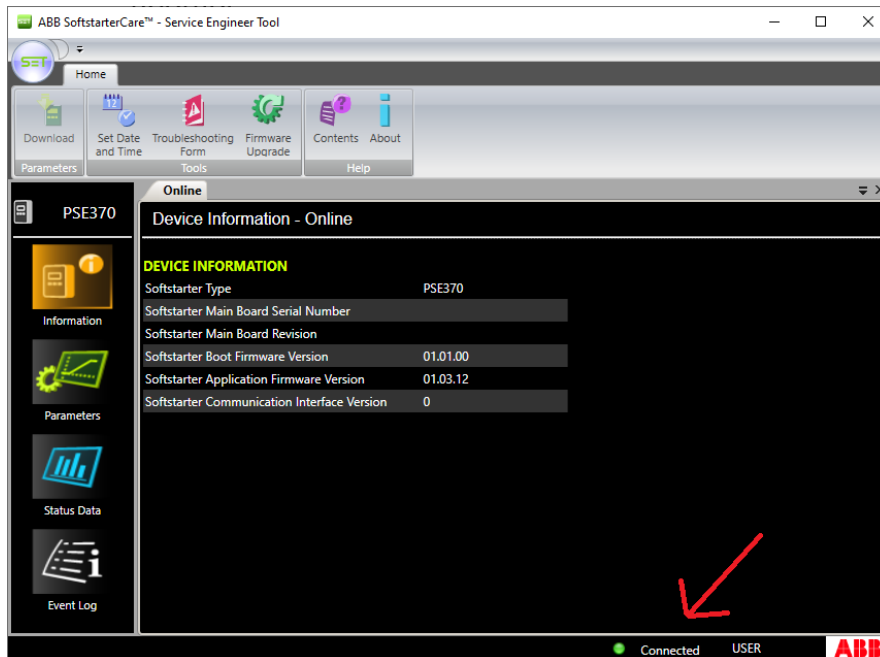


11. Restore the softstarter parameter configuration by setting each parameter according to the values saved in step 1.

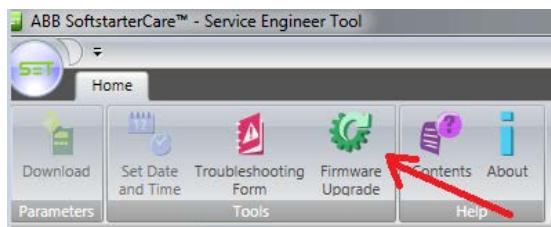
STATUS	SECURITY LEVEL	DOCUMENT ID.	REV.	LANG.	PAGE
Approved	Public	2CMT001197D0169	C	en	7/10

How to upgrade PSE firmware

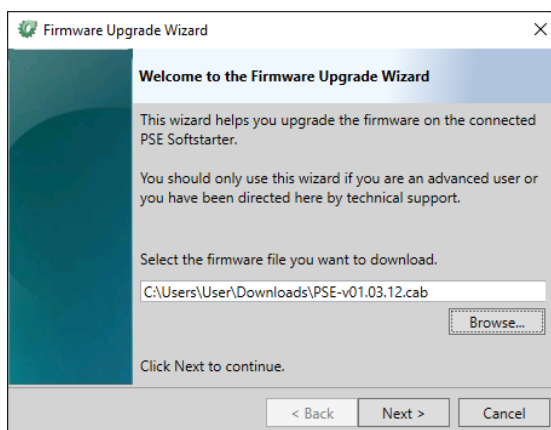
1. Ensure that the PSE softstarter is disconnected from operational voltage and control supply voltage (100-250V).
2. Use a PSECA USB cable to connect the PSE softstarter to your computer.
3. Start SoftstarterCare and confirm that the softstarter is connected.



4. Click on Firmware upgrade to start the firmware upgrade wizard.

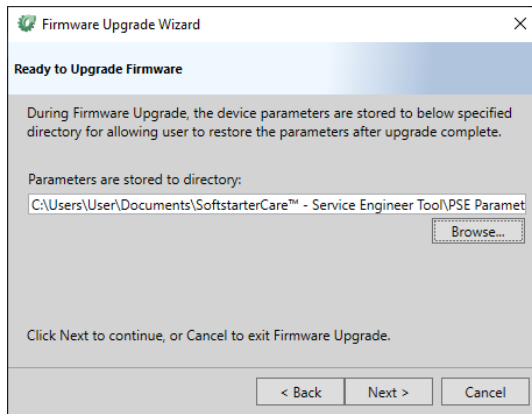


5. Select the firmware (.cab) file downloaded from ABB Library and click Next.

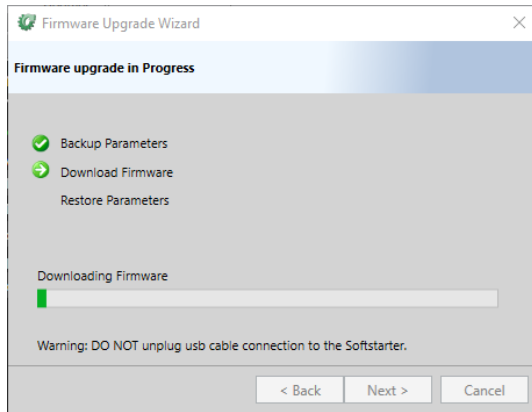


STATUS	SECURITY LEVEL	DOCUMENT ID.	REV.	LANG.	PAGE
Approved	Public	2CMT001197D0169	C	en	8/10

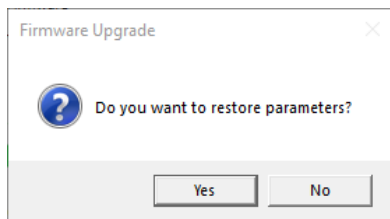
6. Select the directory SoftstarterCare will use to store the softstarter parameter configuration and click Next.



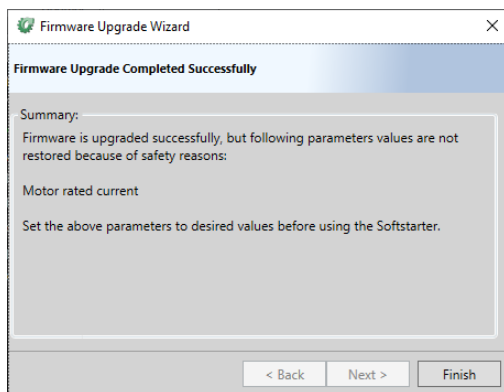
7. The firmware upgrade is now in progress. The upgrade takes about 1 minute to complete.



8. A message box asks whether you want to restore parameters or not. Click Yes to restore parameters.



9. The upgrade is now completed. Click Finish to close the Firmware upgrade wizard.



STATUS	SECURITY LEVEL	DOCUMENT ID.	REV.	LANG.	PAGE
Approved	Public	2CMT001197D0169	C	en	9/10

2. Additional Information

2.1. Listing of related documents

Ref #	Document Kind, Title	Document No.
1	PSTX - Installation and commissioning manual	1SFC132081M0201
2	PSE - Installation and commissioning manual	1SFC132057M0201

3. Revisions

Rev.	Page (P) Chapt. (C)	Description	Date Dept./Init.
C		Added PSTX single CAB file instruction	2022-02-15

STATUS	SECURITY LEVEL	DOCUMENT ID.	REV.	LANG.	PAGE
Approved	Public	2CMT001197D0169	C	en	10/10