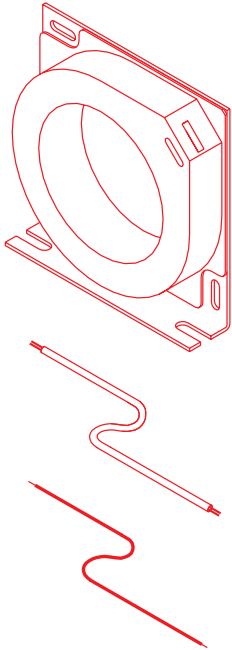


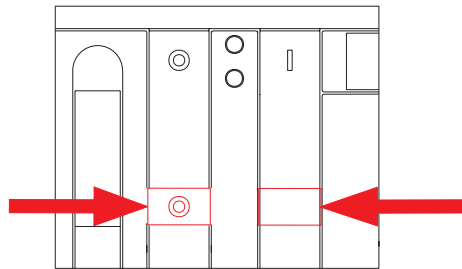
Trasformatore amperometrico omopolare
Homopolar current transformer
Einpoliger Stromwandler
Transformateur ampèremétrique homopolaire
Transformador amperimétrico homopolar



- ATTENZIONE:** Posizionare l'interruttore in APERTO con MOLLE SCARICHE.
CAUTION: Position the circuit-breaker in its OPEN position with the SPRINGS RELEASED.
ACHTUNG: Den Leistungsschalter in AUS-Stellung mit ENTSPANNTEN EINSCHALTFEDERN schalten.
ATTENTION: Mettre le disjoncteur en position OUVERT avec RESSORTS DEBANDES.
ATENCIÓN: Colocar el interruptor en posición de ABIERTO con los MUELLES DESCARGADOS.

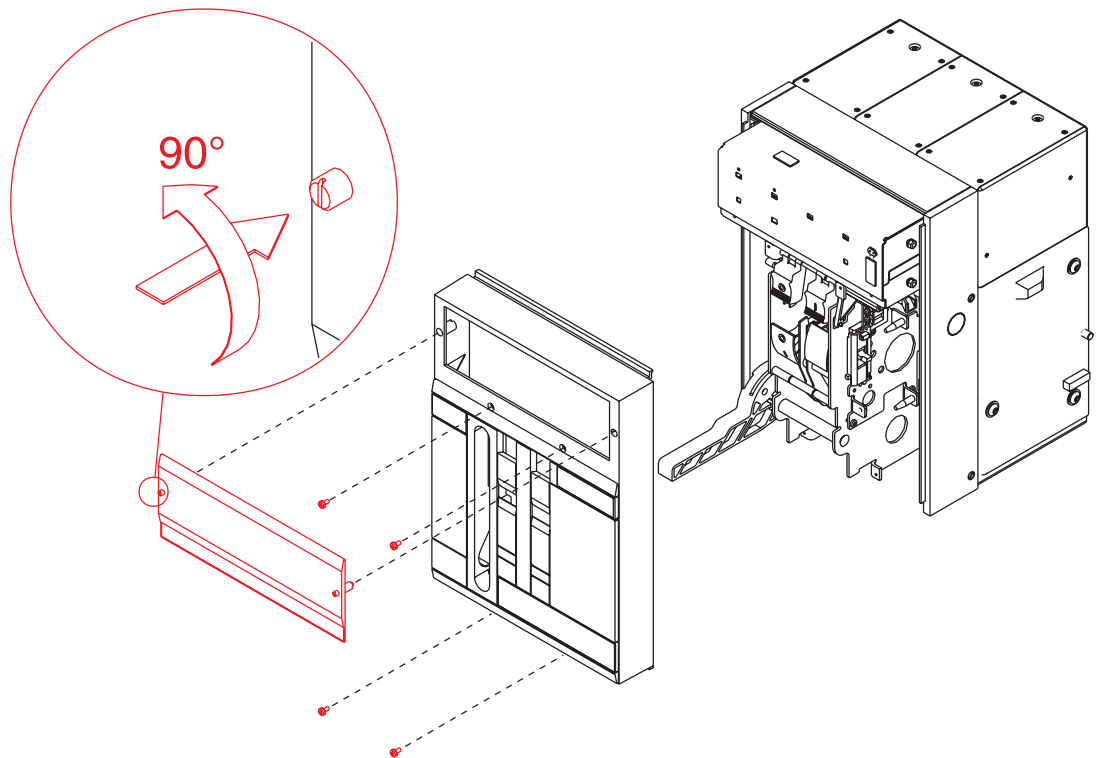


APERTO
 OPEN
 AUS-STELLUNG
 OUVERT
 ABIERTO



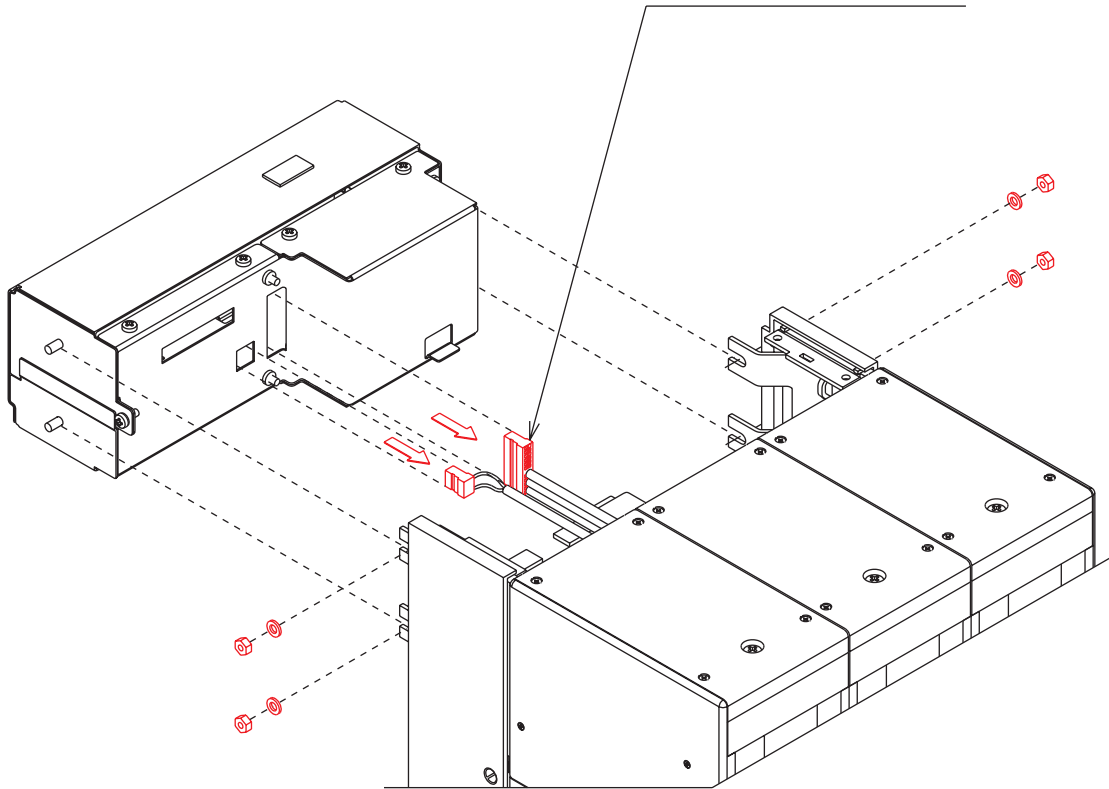
BIANCO
 WHITE
 WEISS
 BLANC
 BLANCO

A

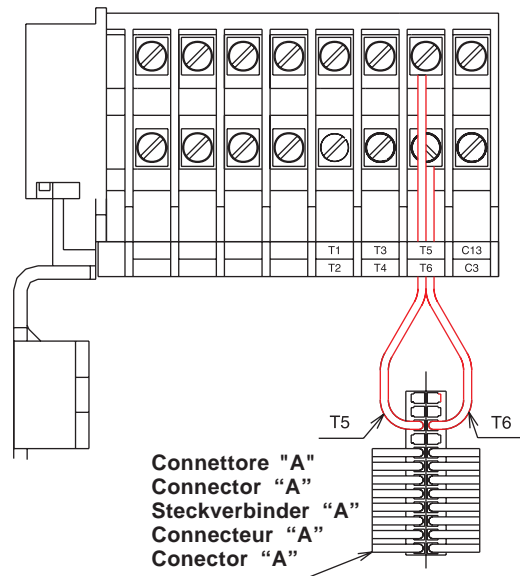
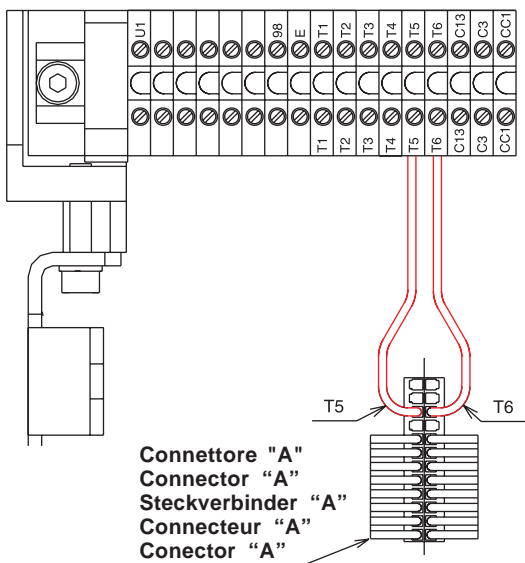


B

Connettore "A"
 Connector "A"
 Steckverbinder "A"
 Connecteur "A"
 Conector "A"

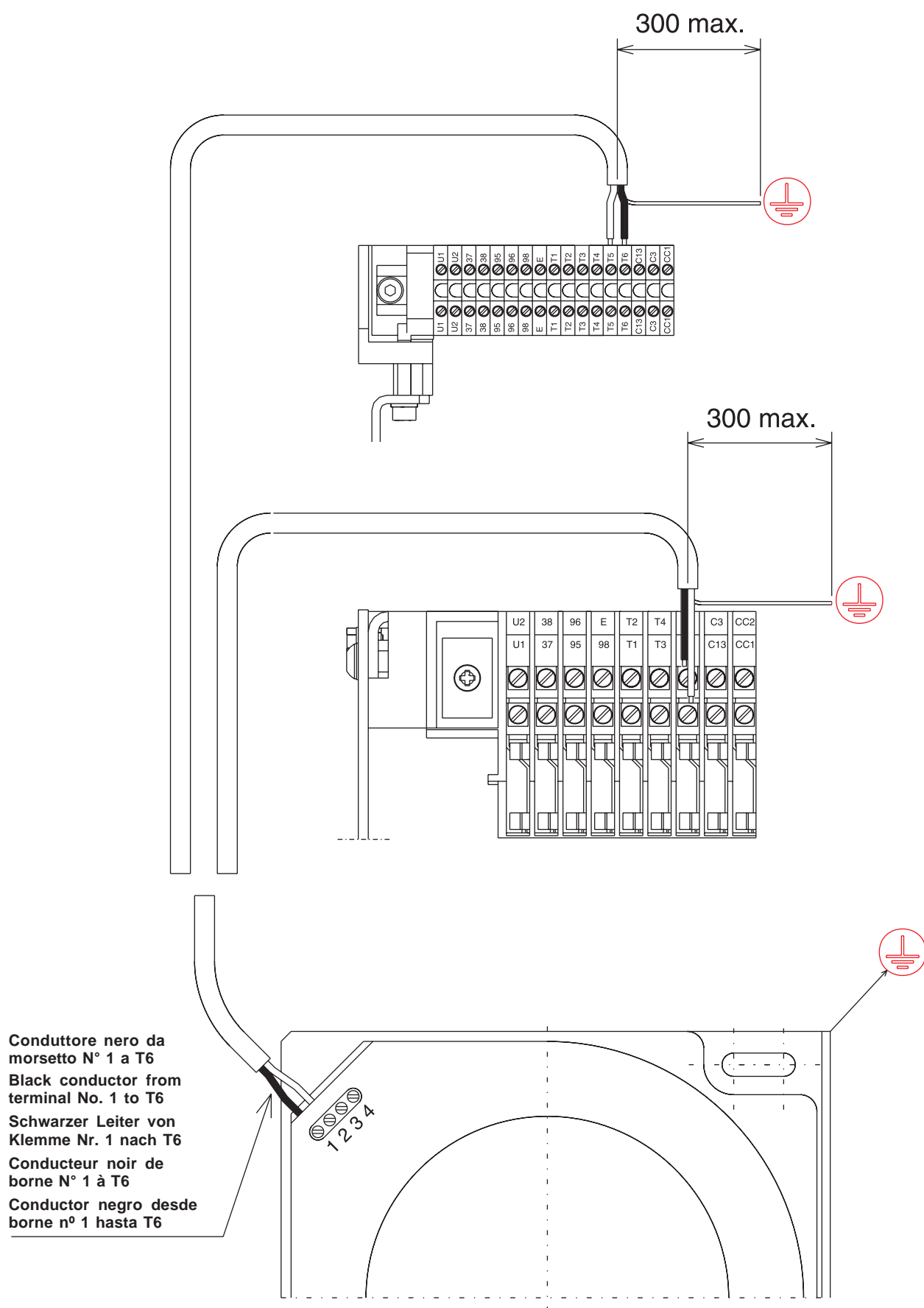


C

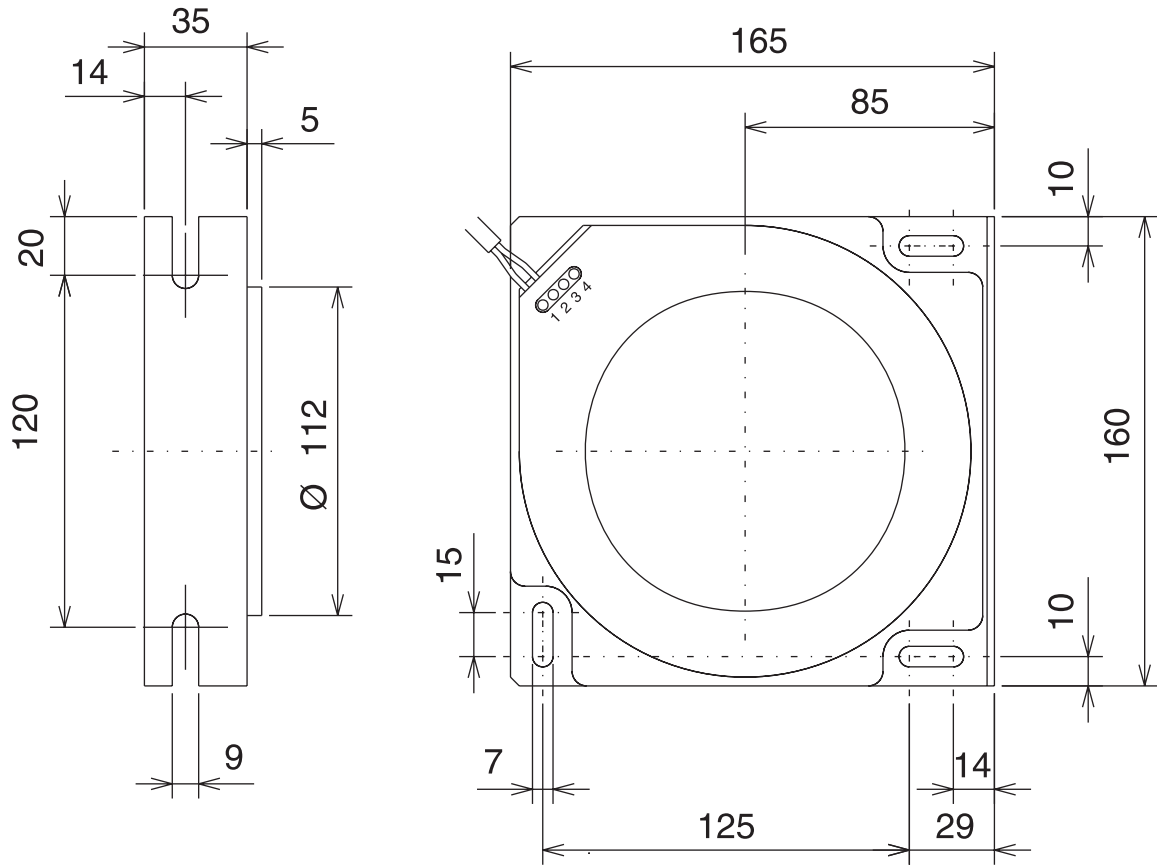


D

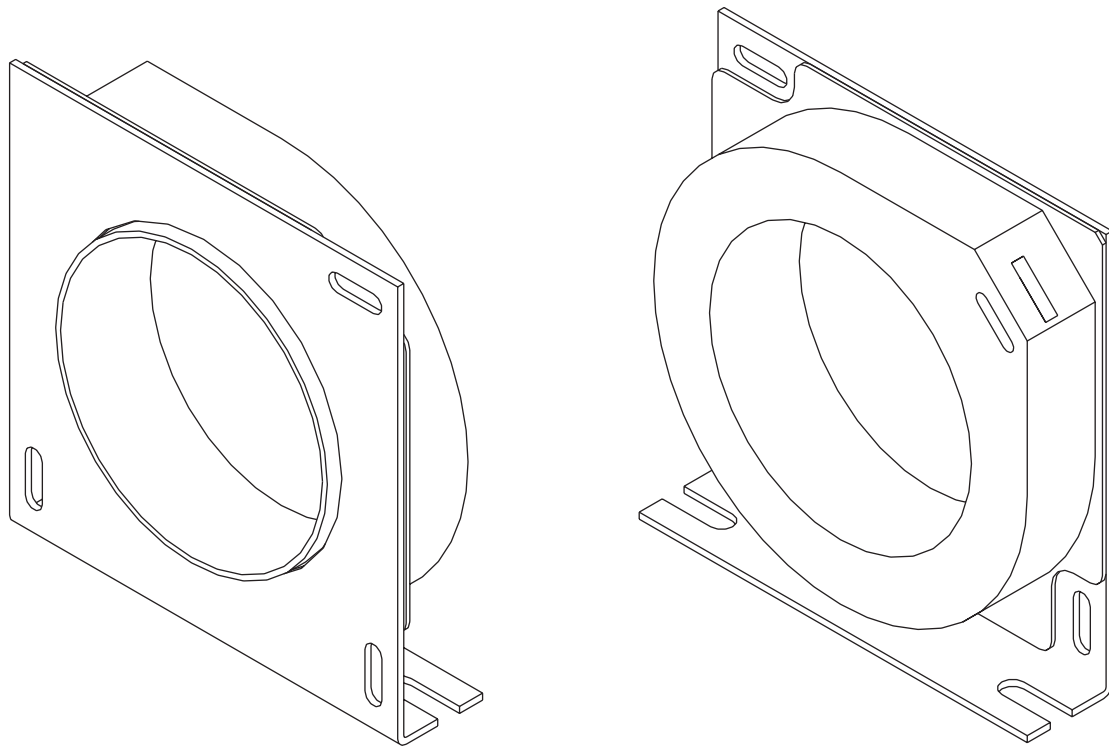
E



F



G



H

ABB SACE		SACE Emax E1 ÷ E6	601933/507	29127 06-98	4/4
-----------------	---	--------------------------	-------------------	--------------------	------------