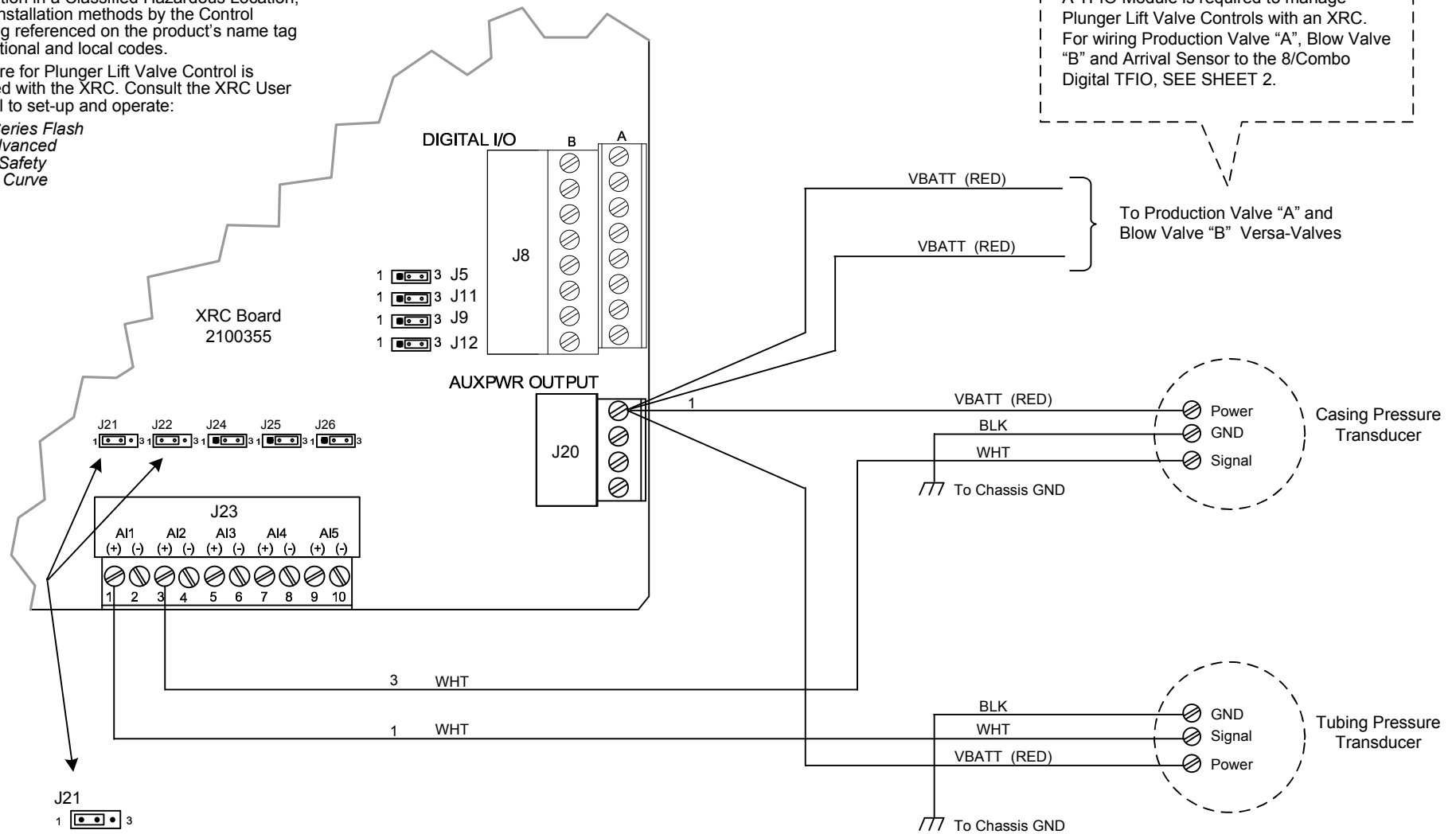


**NOTES:**

1. **WARNING:** This drawing does not illustrate completely the installation methods required for hazardous locations. Prior to any installation in a Classified Hazardous Location, verify installation methods by the Control Drawing referenced on the product's name tag and national and local codes.
2. Software for Plunger Lift Valve Control is included with the XRC. Consult the XRC User Manual to set-up and operate:

*XRC-Series Flash  
IEC Advanced  
IEC w/Safety  
Turner Curve*

A TFIO Module is required to manage Plunger Lift Valve Controls with an XRC. For wiring Production Valve "A", Blow Valve "B" and Arrival Sensor to the 8/Combo Digital TFIO, SEE SHEET 2.



The Jumpers J21, J22, J24, J25 & J26 are selections for Analog Input Pairs on J23 (Those are 1&2, 3&4, 5&6, 7&8 and 9&10, respectively).

Setting the jumpers Pin-1 to Pin-2 = 0-20mA  
Setting the jumpers Pin-2 to Pin-3 = 0-10V.

Any of the pairs may be selected for Signal Input (+). In this instance, the Transducer uses the AIs set to 0-20mA on Pin-1 of J23; Jumper J21, Pin-1 to Pin-2, as shown.

**XRC TO CASING PRESSURE & TUBING PRESSURE TRANSDUCERS**

REF: N/A

<b>ABB</b>	TOTALFLOW Products	ACTION	DOC TYPE	TITLE	DWG NO.	REV	SHEET
		D21584	UD	PLUNGER LIFT ON/OFF FOR XRC (2100355 BD) W/VERSA-VALVES	2103175	AB	1 OF 2

NOTES, continued:

3. LED Indicators:

Run LED – Blinking indicates on-board PIC running.

Activity LED – Blinking indicates buss activity.

Mode LED – 00 = Normal 01 = Reset

4. LED Operation:

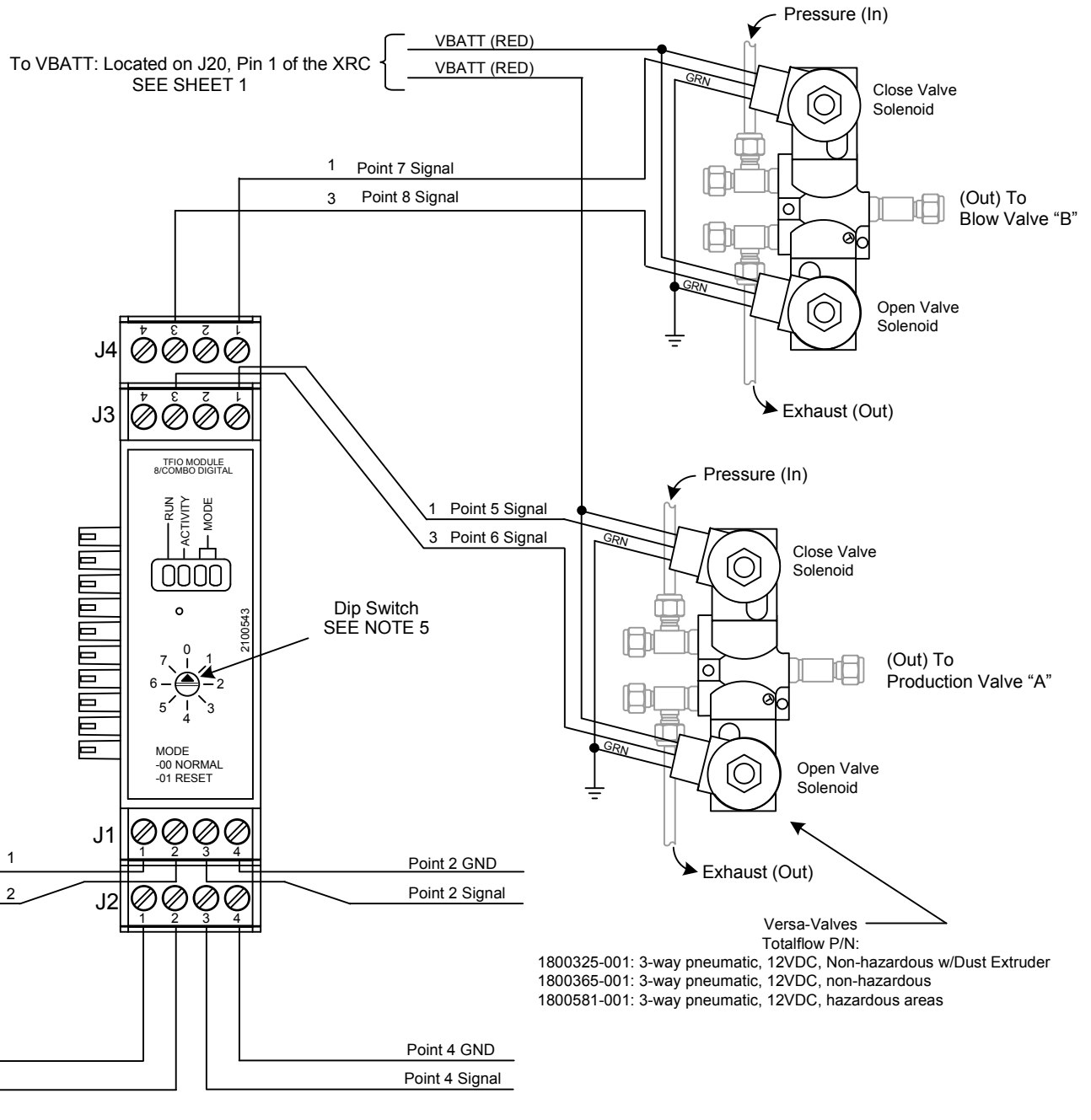
Register 0.7.7 = 0 – Power Save Mode (LEDs off when MMI disconnected)

Register 0.7.7 = 1 – LEDs on all the time.

5. Dip Switch factory default address is set at 0.

If another COMBO IO/VC INTF TFIO is added, move that Dip Switch setting to 1. If more are added, use the next address in line for each. Changing the address applies only to TFIOs of their own type, and not TFIOs of another type; those would also start at 0 and add new address of their own.

TIP: While 0 is recommended for the first one, any address can be used (But keep in mind the original config files in our software are built with this address and factory tests will look for it).



If a 3-Wire Sensor is used, wire Signal and GND as shown, and add Power from VBATT; J4, Pin 2 of the XFC. SEE SHEET 1

There are 8 configurable points available on the I/O Module (The wiring interconnect shown has used 5 of them). Each point can be configured to be either an Input, and/or an Output.

TFIO 8-POINT COMBO DI/DO/PI MODULE (2100543), PRODUCTION VALVE "A", BLOW VALVE "B" AND ARRIVAL SENSOR

<b>ABB</b>	TOTALFLOW Products	ACTION	DOC TYPE	TITLE	DWG NO.	REV	SHEET
		D21584	UD	PLUNGER LIFT ON/OFF FOR XRC (2100355 BD) W/VERSA-VALVES	2103175	AB	2 OF 2