

NOTES:

- WARNING:** This drawing does not illustrate completely the installation methods required for hazardous locations. Prior to any installation in a Classified Hazardous Location, verify installation methods by the Control Drawing referenced on the product's name tag and national and local codes.
- WARNING:** Using a non-factory RS485 data cable between UC12 and first unit may result in damage and may void system warranty.

- Maximum length of RS485 bus is 4000 Ft. @9600 baud using Totalflow cable P/N 2011648-001 or equivalent.
- Units must be daisy-chained; No Star Configurations.
- Cable Shielding – Cable segments between units should have their shields terminated on one end only. The RS-485 Cable (P/N 2011648-001) has two shields, each with its own drain wire. When connecting multiple units together, connect the two drain wires on the first unit to one of the two ground screws on the bottom left-hand side of the enclosure. Cut the cable and terminate the wiring on the second unit but do not connect the drain wires. On the next segment between the second and third units, connect the two drain wires to the second unit but not to the third unit. Repeat this process until all units are wired.

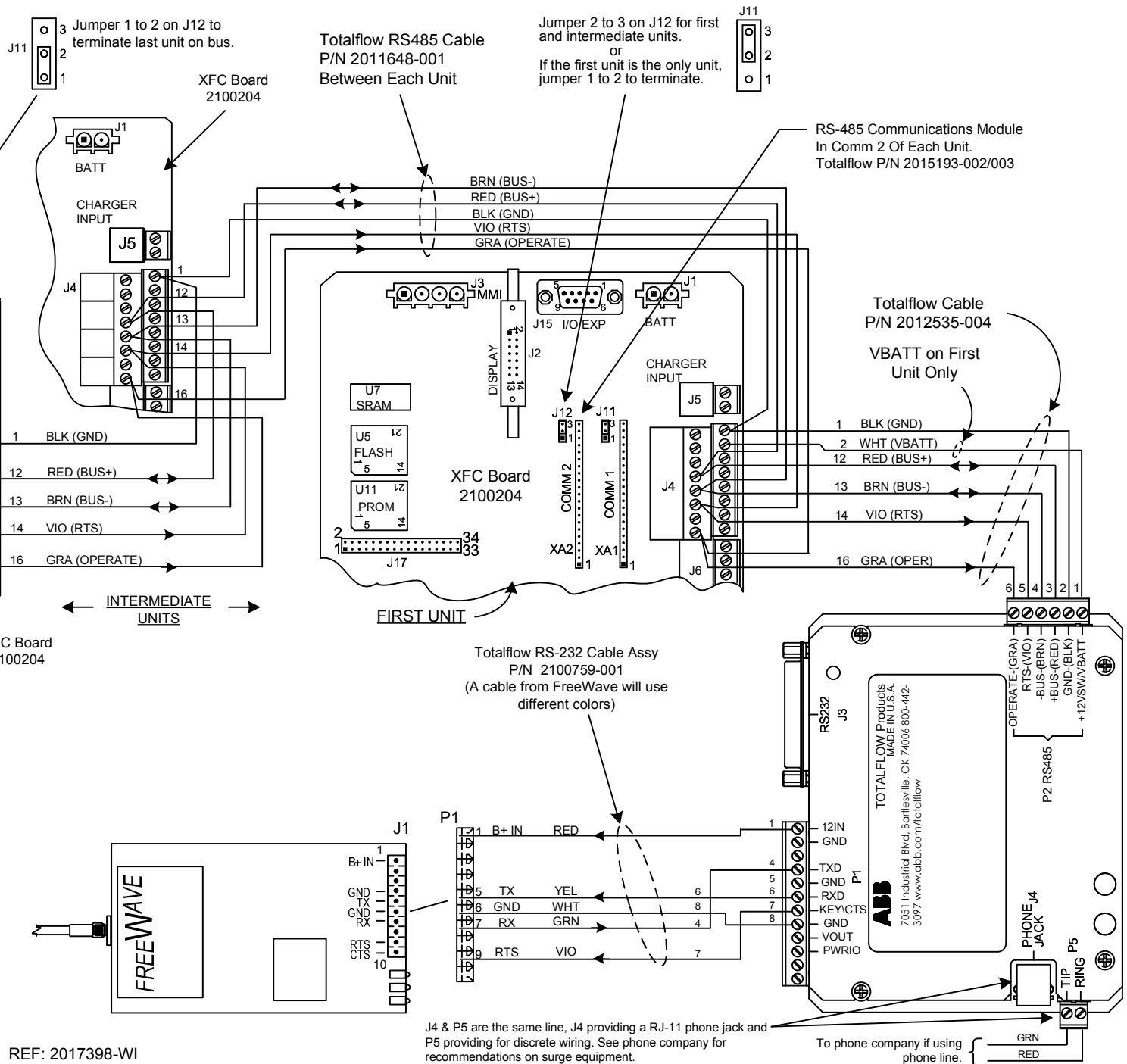


ABB TOTALFLOW Products	ACTION	DOC TYPE	TITLE	DWG NO.	REV	SHEET
	L19727	UD	XFC COMM 2 (2100204 BD) WUCI2 (RS-485) TO FREEWAVE RADIO DGR09RFS REV AE/AH FGRI0-M/S (RS-232) W/FCU PWR	2103168	AA	1 OF 1