

ELECTRIFICATION DISTRIBUTION SERVICES

## 8000-Line Motor Control Center

### New Fastrac Variable Frequency Drive (VFD) Units



The 8000-Line motor control center was originally supplied with GE Fuji drives. Unfortunately, those drives are now obsolete. However, replacement VFD units are available, which are compatible with existing 8000-Line vertical sections.

The new units are based on modern low voltage VFD technology, using ABB products.

If a configuration is required, which is not covered by this brochure, custom quotations are available by contacting ABB's ELDS Service team in the US.

#### Fastrac Specifications

##### VFD Rating

0.5, 1, 2, 3, 7.5, 5, 7.5, 10, 15, 20, 25 and 30HP

##### Voltage:

380 – 500V @ 60Hz

##### Unit Size

- 0.5 – 15HP: 36"
- 20 – 30HP: 42"

##### Rating

UL508

##### Drive Type

- HVAC: ABB ACH580
- Industrial: ABB ACS580

##### Industrial Ratings (Excludes ACH580)

- Light Duty (10% overload for one minute)
- Heavy Duty (50% overload for one minute)

##### Base Unit

- 8000-Line bucket with
- ABB VFD
- Electrical: CPT & auxiliary relays
- Cooling: Fan, louvers & diffuser

##### Controls Option

- Door mounted display
- Hand – Off – Auto switch
- Start – Stop pushbuttons
- Manual speed control
- Running and fault lights

## Technical details

See descriptions of the Basic Unit and Controls option above.

### Industrial Drive Units

Nominal Ratings					
Light Duty			Heavy Duty		Frame size
PLd HP	ILd A	PHd HP	IHd A		
0.5	6	0.5	4		R1
1	7.6	1	4.8		R1
2	12	2	7.6		R1
3	6	3	4		R1
5	7.6	3	4.8		R1
7.5	12	5	7.6		R1
10	14	7.5	11		R2
15	23	10	14		R2
20	27	15	21		R3
25	34	20	27		R3
30	44	25	34		R3

### HVAC Drive Units

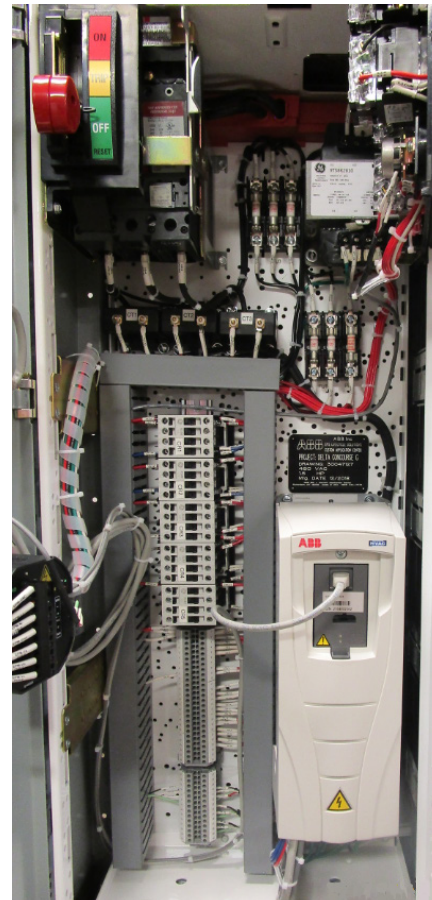
Nominal Ratings					
Light Duty			Heavy Duty		Frame size
PLd HP	ILd A	n/a	n/a		
0.5	6	n/a	n/a		R1
1	7.6	n/a	n/a		R1
2	12	n/a	n/a		R1
3	4.8	n/a	n/a		R1
5	7.6	n/a	n/a		R1
7.5	12	n/a	n/a		R1
10	14	n/a	n/a		R2
15	23	n/a	n/a		R2
20	27	n/a	n/a		R3
25	34	n/a	n/a		R3
30	44	n/a	n/a		R3

### Industrial Duty Ratings

- Light: 10% overload for one minute.
- Heavy: 50% overload for one minute

Standard drive buckets are available up to 30HP, which are built in plug-in type bucket designs.

Larger horsepower rated drives can be integrated into buckets requiring custom engineered designs.



To obtain an 8000-Line VFD unit quotation, please contact ABB as follows:

- US Phone: 800-533-5885; Option 3
- Email: EPIS.Service@abb.com