

HOW TO: Turn off instantaneous tripping of PCD before a thunderstorm

This document provides the step-by-step instructions for setting up the PCD to turn off instantaneous trips before a thunderstorm. Instructions are also included to turn OFF instantaneous tripping, from SCADA, and subsequently turn it back ON.

Call 1-800-929-7947 option 5 or +1-407-732-2510 for this issue or any other questions.

Instructions

Using WinPCD, perform the following steps to configure the PCD.

1. Map ULO1(or ULO2-7) programmable output to feedback FB1, as shown.

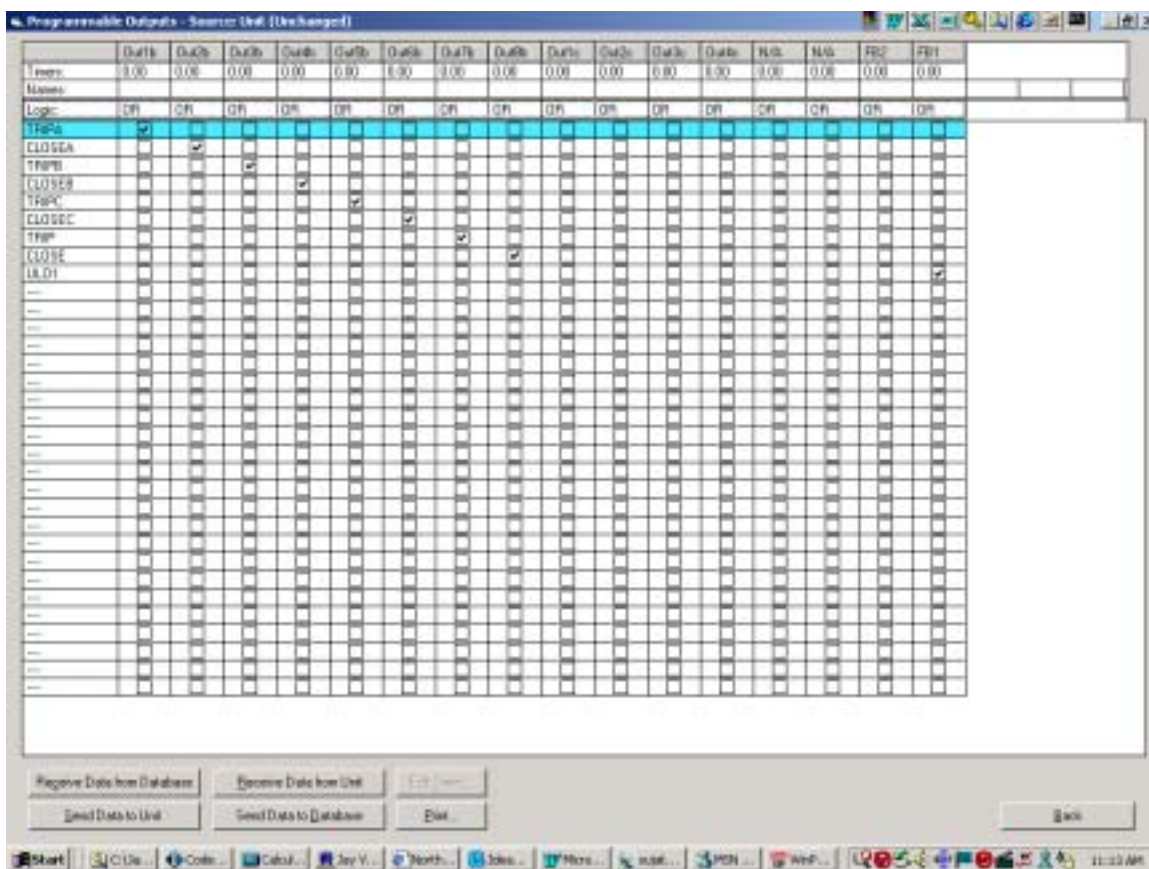


ABB Inc.



2. Map 50-1 logical input to FB1 OPEN, as shown.

Programmable Inputs - Source: Unit (Unchanged)

Range	Logic	In1a	In2a	In3a	In4a	In5a	In6a	In7a	In8a	In9a	In10a	In11a	In12a	In13a	In14a	In15a	FB1	FB2
50-1	AND	C																
50-2	AND		C															
50-3	AND			C														
50-4	AND				C													
50-5	AND					C												
50-6	AND						C											
50-7	AND							C										
50-8	AND								C									
50-9	AND									C								
50-10	AND										C							
50-11	AND											C						
50-12	AND												C					
50-13	AND													C				
50-14	AND														C			
50-15	AND															C		
50-16	AND																C	
50-17	AND																	C
50-18	AND																	
50-19	AND																	
50-20	AND																	
50-21	AND																	
50-22	AND																	
50-23	AND																	
50-24	AND																	
50-25	AND																	
50-26	AND																	
50-27	AND																	
50-28	AND																	
50-29	AND																	
50-30	AND																	
50-31	AND																	
50-32	AND																	
50-33	AND																	
50-34	AND																	
50-35	AND																	
50-36	AND																	
50-37	AND																	
50-38	AND																	
50-39	AND																	
50-40	AND																	
50-41	AND																	
50-42	AND																	
50-43	AND																	
50-44	AND																	
50-45	AND																	
50-46	AND																	
50-47	AND																	
50-48	AND																	
50-49	AND																	
50-50	AND																	

C = Enable = Closed, Disable = Opened O = Enable = Opened, Disable = Closed

Receive Data from Database Receive Data from Unit
Send Data to Unit Send Data to Database Exit Back

ABB Inc.

655 Century Point
Lake Mary, FL 32746

Telephone
1-800-929-7947
+1-407-732-2000

Fax
407-732-2161

www.abb.com/mediumvoltage

Instructions
IN-FAPCD-05 Rev. A
October 2002



The SCADA master will then issue the commands to turn instantaneous tripping ON and OFF.

3. Issue a SCADA control command to Latch On ULO1 output using DNP binary output point 42, as shown. This will turn OFF instantaneous 50-1 tripping.

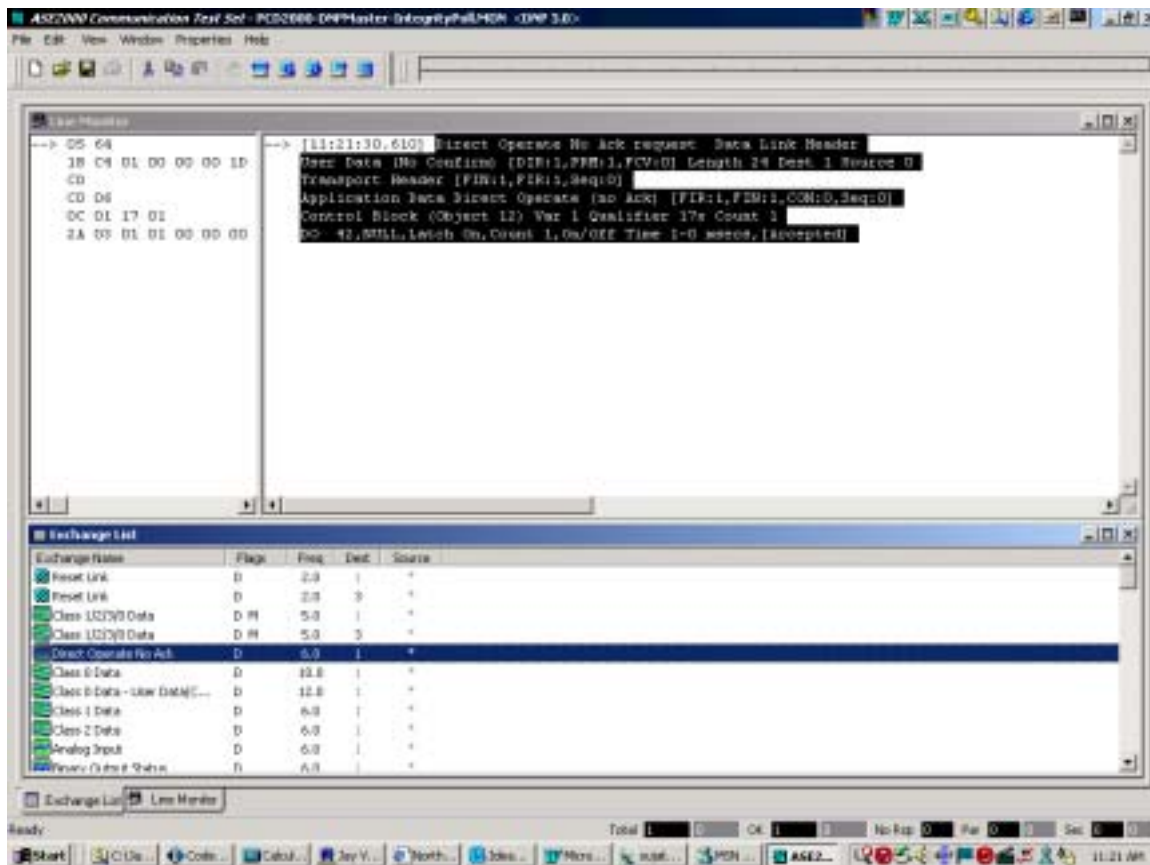


ABB Inc.

655 Century Point
Lake Mary, FL 32746

Telephone
1-800-929-7947
+1-407-732-2000

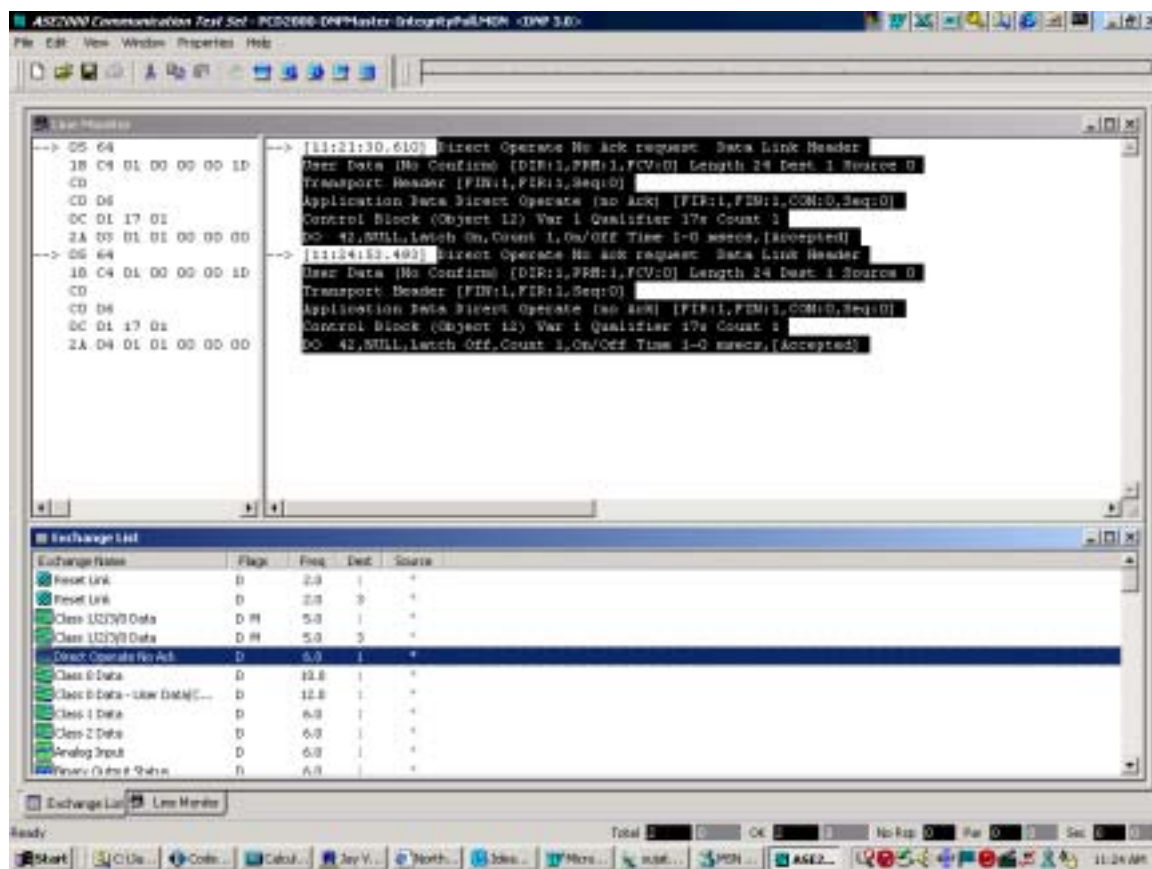
Fax
407-732-2161

www.abb.com/mediumvoltage

Instructions
IN-FAPCD-05 Rev. A
October 2002



4. To turn instantaneous tripping back ON, send DNP command to Latch OFF binary output point 42.



Call 1-800-929-7947 option 5 or +1-407-732-2510 for any other questions you may have.

ABB Inc. has made every reasonable attempt to guarantee the accuracy of this document, however, the information contained herein is subject to change at any time without notice and does not represent a commitment on the part of ABB Inc. These instructions do not purport to cover all details or variations in equipment, nor provide for every possible contingency to be met in conjunction with installation, operation or maintenance. Should particular problems arise which are not covered sufficiently, please contact ABB Inc.

ABB Inc.

655 Century Point
Lake Mary, FL 32746

Telephone
1-800-929-7947
+1-407-732-2000

Fax
407-732-2161

www.abb.com/mediumvoltage

Instructions

IN-FAPCD-05 Rev. A
October 2002