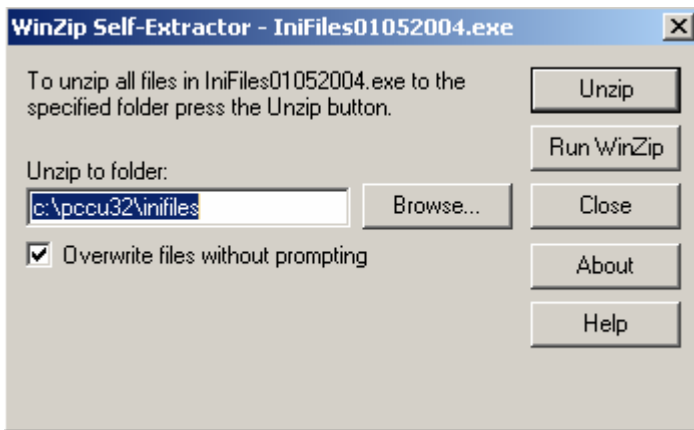


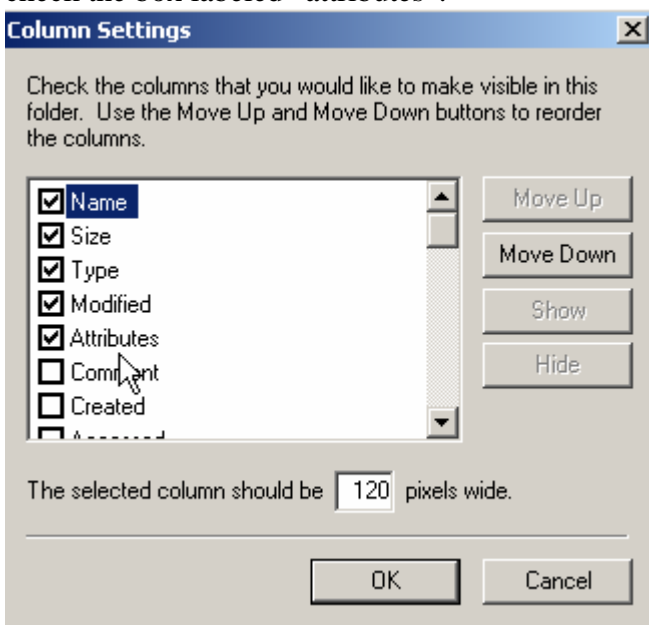
PCCU32 Initialization (.ini) Files

PCCU32 utilizes initialization files to make data visible within PCCU. Periodically changes to existing .ini files or new .ini files are required for new applications. Since applications are not always synced with PCCU32 releases we are making a full set of PCCU32 ini files available on our web site. These files will periodically be updated and on our web site for your convenience. Run the self-extracting inifiles10022006.exe file to extract the .ini files.

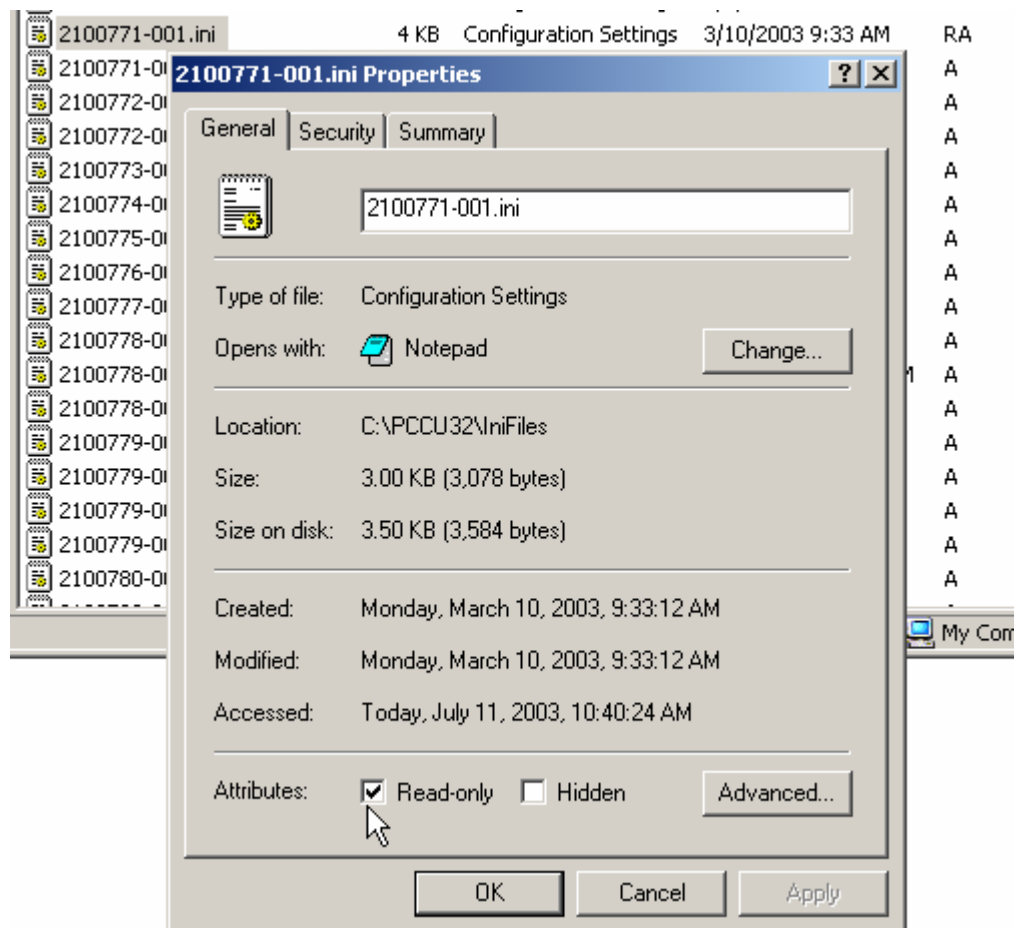
Some .ini files located in your “inifiles” folder could be set to “read only”. The self-extracting .exe file will alert the user anytime it encounters a read only .ini file. The error message will state “can’t create output file:” See example below.



If you see this error message use explorer and view all the .ini files located in your pccu32\inifiles folder. Set explorer to view attributes by going to “view” “choose columns” and check the box labeled “attributes”.



Next, review all the .ini files within your pccu32\inifiles folder and look for files with an “R” attribute. Right click on those files with the “R” attribute and uncheck the “read only” flag.



After changing all “read only” .ini files to read/write, run the self-extracting .exe file again to update your .ini files.