



ELECTRIFICATION

New DMS-line

MCB's and RCCB's for
domestic installations



- Especially developed for domestic installations

DMS-line

Compliant with domestic standards EN/IEC 60898-1 and EN/IEC 61008-1

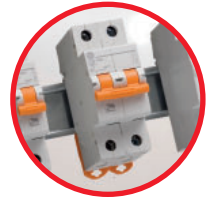
Clear identification

- Current rating - Tripping curve
- Interrupting capacity
- Selectivity class
- Product codification
- Laserprinting



Quality clips

- Easy fixing on DIN rail
- User friendly and reliable



2 position & dynamic clips

- Ensure easy and reliable fixations
- Flat and pozidrive screwdrivers

RCCB

- No unwanted tripping
- Flat and flush mounted orange push-button



Safety terminals

- Ensures safe connection
- No risk of miss-insertion of cables and busbar



High torque terminals

- 3.5 Nm for MCB's
- 4.5 Nm for RCCB's



High capacity terminals

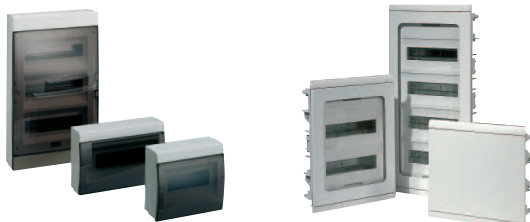
- 25mm² or 2 x 10mm² for MCB's
- 35mm² or 2 x 16mm² for RCCB's
- Fork connection possibilities



Protected terminals IP20



—
Abaco and Europe Line:
Insulated enclosures
suited for DMS-line
installations



MCB's

EN/IEC 60898-1

3

6000



Performance

Thermal setting (In)	6 - 63A
Rated voltage AC (Un)	230/400V
Tripping characteristic	C
Short-circuit capacity acc. EN/IEC 60898-1	6kA
Selectivity class	3
Terminal capacity	25mm ² or 2x10mm ²
Poles	1P, 2PN, 3P
Weight	115 g/pole

Characteristic C

In (A)	No. Poles	Cat. No.	Ref. No.	Pack.
6	1	DG61 C06	690553	12
10	1	DG61 C10	690554	12
16	1	DG61 C16	690555	12
20	1	DG61 C20	690556	12
25	1	DG61 C25	690557	12
32	1	DG61 C32	690558	12
40	1	DG61 C40	690559	12
50	1	DG61 C50	690560	12
63	1	DG61 C63	690561	12
6	1+N	DG61N C06	690562	6
10	1+N	DG61N C10	690563	6
16	1+N	DG61N C16	690564	6
20	1+N	DG61N C20	690565	6
25	1+N	DG61N C25	690566	6
32	1+N	DG61N C32	690567	6
40	1+N	DG61N C40	690568	6
50	1+N	DG61N C50	690876	6
63	1+N	DG61N C63	690877	6
6	3	DG63 C06	690577	4
10	3	DG63 C10	690578	4
16	3	DG63 C16	690579	4
20	3	DG63 C20	690580	4
25	3	DG63 C25	690581	4
32	3	DG63 C32	690582	4
40	3	DG63 C40	690583	4
50	3	DG63 C50	690584	4
63	3	DG63 C63	690585	4

RCCB'S

EN/IEC 61008-1

Type AC



Performance

Thermal setting (In)	25 - 63A
Residual current (IΔm)	30 - 300mA
Rated voltage AC (Un)	230 - 400V
Short-circuit capacity (Inc)	Inc = 6000A at 230V fuse 63A gG
Nuisance tripping resistance	AC: 250A 8/20μs
Terminal capacity	35mm ² or 2x16mm ²
Poles	2P - 4P
Weight	2P: 210g, 4P: 375g

Type AC

In (A)	No. Poles	Cat. No.	Ref. No.	Pack.
25	2	DCG225/030	690776	6
40	2	DCG240/030	690778	6
63	2	DCG263/030	608413	6
25	4	DCG425/030	608415	3
40	4	DCG440/030	608417	3
63	4	DCG463/030	608419	3
25	2	DCG225/300	690777	6
40	2	DCG240/300	690779	6
63	2	DCG263/300	608414	6
25	4	DCG425/300	608416	3
40	4	DCG440/300	608418	3
63	4	DCG463/300	608420	3

ABB (ABBN: SIX Swiss Ex) is a pioneering technology leader in electrification products, robotics and motion, industrial automation and power grids, serving customers in utilities, industry and transport & infrastructure globally. Continuing a history of innovation spanning more than 130 years, ABB today is writing the future of industrial digitalization with two clear value propositions: bringing electricity from any power plant to any plug and automating industries from natural resources to finished products.

In 2018, ABB completed the acquisition of GE Industrial Solutions, the GE's electrification solutions. Industrial Solutions will be integrated into the ABB's Electrification division. GE Industrial Solutions and ABB's product portfolio are very complementary. Together, this is an extensive combined portfolio, with a broad-global anchoring, sales team and distribution network.

go.abb/industrial