

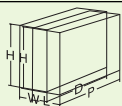
# UniMotor

Motor control center air insulated metal-clad switchboards

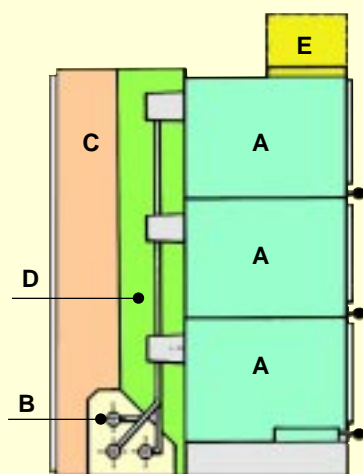


- Internal arc-proof construction
- Compact dimension
- Takes up to three contactors in one panel
- Connection and withdrawal of the contactor with the door closed
- Possibility of constructing all types of motor starting
- Can be coupled with UniSafe switchboards
- Wide use of recyclable material
- Production cycle certified ISO 14001

## Technical data

Switchboard		UniMotor + UniSafe	
Type of construction	Metal-clad	■	
Rated voltage	[kV]	12	
Insulation levels	[kV]	12/28/75	
Rated main busbar current (40 °C)	[A]	2500	
Rated branch connection current (40 °C)	[A]	630	
Rated short-time current	[kA]	31,5	
Arc proof withstand current	[kA]	31,5	
Tested according to		IEC Standards	
Overall dimensions of basic cubicle		H [mm]	2250
		W [mm]	900
		D [mm]	1850
Design includes:			
Vacuum contactors with fuses		•	
Integrated capacitor banks		•	
Earthing switch		•	
Bay computer		•	
Measuring transformers		•	
Measuring sensors		•	
Technical catalogue	No.	601347	

## Basic cubicle



- A Contactor enclosure
- B Busbar compartment
- C Cable compartment
- D Feeder compartment
- E Interconnection duct



**ABB Trasmissione & Distribuzione S.p.A.**  
**Unità Operativa Sace T.M.S.**

Via Friuli, 4

I-24044 Dalmine

Tel: +39 035 395111

Fax: +39 035 395874

E-mail: [sacetms.tipm@it.abb.com](mailto:sacetms.tipm@it.abb.com)

Internet: [www.abb.com](http://www.abb.com)