

# Type VOZ-20 Outdoor voltage transformer

## Product features

- 34.5 kV outdoor, 200 kV BIL, 60 Hertz
- Primary volts: 20125 - 34500
- Electrical clearances:
  - Strike: 15.25" (387 mm)
  - Creep: 38.0" (965 mm)
- Approximate weight: 125 lbs (57 kg)

## Application

The VOZ-20 outdoor voltage transformer is used to accurately transform 34.5 kV system voltages to secondary voltages for metering and relaying applications, typically 115/69 or 120 volts.

## Construction features

The layer wound and shielded high voltage winding is designed to withstand continuous operation at ratings higher than the line-to-ground voltage level when applied on a 34.5 kV, 200 kV BIL system. Refer to the selection guide for the rated voltage factor (RVF). Two cores placed through and around the windings are protectively cushioned and secured to a support frame.

For insulation and protection, the assembly is cast in hydrophobic cycloaliphatic epoxy (HCEP) using automatic pressure gelation. The HCEP material offers superior arc track, ozone, and ultraviolet-resistant properties while maintaining physical strength. The hydrophobic properties of HCEP ensure a high level of performance in wet or humid environments.

## Terminals

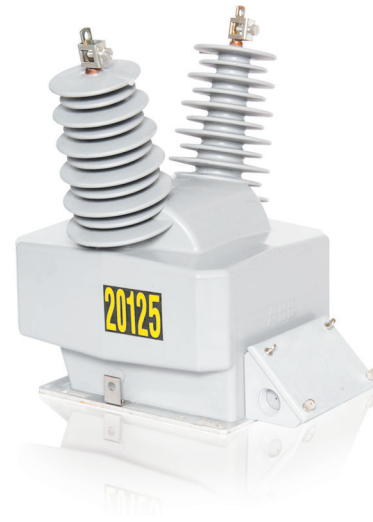
Electro-tin plated copper primary line terminals accommodate #10 to 250 MCM conductors. Clamp-type secondary terminals accommodate #14 through #3 wire. A ground terminal is also provided for grounding the secondary circuit at the transformer.

## Junction box

The junction box has a 1" conduit hub on either end and a knock out for a 1" conduit fitting on the bottom. The box is anchored to the body of the transformer with screws and can be easily detached, simplifying installation and change-out procedures.

## Baseplate

The base is constructed of corrosion-resistant aluminum and is secured to the encapsulated base support.



## Mounting

The VOZ-20 can be mounted in upright, cantilever, or upside-down positions. Stress relief devices should be used to support cable connections.

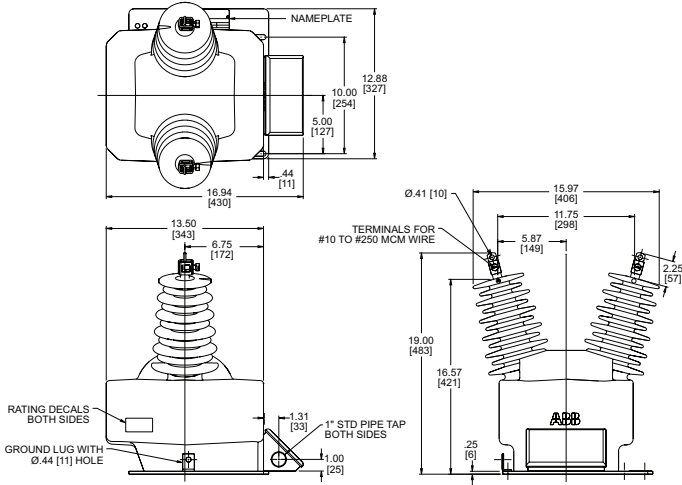
## Test reports

Test reports are stored electronically and can be e-mailed in various formats at the time of shipment.

## Standards

This unit can be tested to all applicable IEEE, CSA, or IEC standards as requested.

## Unit dimensions



## Type VOZ-20

### Selection guide

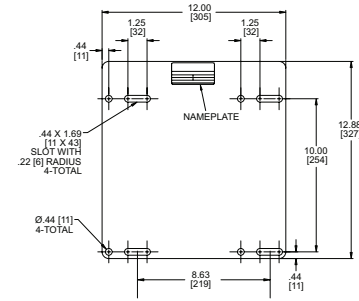
Primary voltage	Secondary voltage	Winding ratio	Style number
20125/34500Y	115/67.08	175/300:1	E-7525A92G01
27600/27600Y	115/69	240/400:1	E-7525A92G02
34500/34500Y	115/69	300/500:1	E-7525A92G03

IEEE metering accuracy: X1-X3: 0.3 W, X, M, Y, Z and 0.6 ZZ  
X2-X3: 0.3 W, X, M, Y, 0.6Z and 1.2ZZ

Rated voltage factor: 1.1  
Note: 50 Hz designs available

Additional styles available upon request. Contact your ABB sales representative or call +1-252-827-3212 for more information.

## Baseplate dimensions



For more information please contact:

**ABB Inc.**  
**Medium Voltage Distribution Components**  
 3022 NC 43 North  
 Pinetops, NC 27864  
 USA  
 Phone: +1 252 827 3212  
 Fax: +1 252 827 4286  
[www.abb.com/mediumvoltage](http://www.abb.com/mediumvoltage)

### Note:

The information contained in this document is for general information purposes only. While ABB strives to keep the information up to date and correct, it makes no representations or warranties of any kind, express or implied, about the completeness, accuracy, reliability, suitability, or availability with respect to the information, products, services, or related graphics contained in the document for any purpose. Any reliance placed on such information is therefore strictly at your own risk. ABB reserves the right to discontinue any product or service at any time.

Copyright 2010 ABB.  
 All rights reserved.