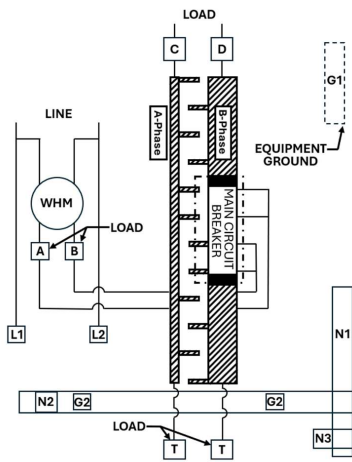




**ReliaHome™  
Meter Combo**



ENCLOSED  
PANELBOARD  
ISSUE NO. C-1827



**CAT NO. : TSM020CSU MOD 1  
SURFACE TYPE**

200 AMPS MAX. 120/240V AC  
3 WIRES, 1 PHASE  
TYPE 3R ENCLOSURE  
METER SOCKET RATING: 200 AMPS CONTINUOUS.

MAIN BREAKER: THQMV200WL

**OVER CURRENT PROTECTION**

IF BREAKER TRIPS, HANDLE WILL BE IN INTERMEDIATE POSITION.  
TO RESTORE SERVICE;  
1. MOVE HANDLE TO "OFF" POSITION.  
2. THEN TO "ON" POSITION.

**USE COPPER OR ALUMINIUM**

USE ONLY 60 DEG. C (140 DEG. F) OR 75 DEG. C (167 DEG. F)  
CONDUCTORS ON ALL FIELD INSTALLED LINE, LOAD AND NEUTRAL  
TERMINATIONS.

**WIRE RANGE**

CONNECTOR	COPPER		ALUMINIUM	
	SOLID	STRD	SOLID	STRD
LINE - L1/L2	---	1-300	---	2/0-250
NEUTRAL - N1	14-10	14-4	12-10	12-4
NEUTRAL - N2	---	1-300	---	1-300
NEUTRAL - N3	---	6-250	---	6-250
GROUND - G1	14-10	14-4	12-10	12-4
GROUND - G2	---	6-2/0	---	6-2/0
Feed thru - T	---	1-300	---	1-300
LOAD - C/D	---	1-250	---	2/0-250

**LUG TIGHTENING TORQUE (LB-IN)**

Applies to line, neutral and equipment ground only.

SLOTTED SCREW		INTERNAL HEX SCREW	
AWG WIRE	TORQUE (LB-IN)	HEX SIZE	TORQUE (LB-IN)
14-10	32-35	3/16 ACROSS FLATS	108-120
8	36-40	1/4 ACROSS FLATS	180-200
6-4	41-45	5/16 ACROSS FLATS	248-275
3-2/0	45-50	-----	-----

SUITABLE ONLY FOR USE AS SERVICE EQUIPMENT

ADDITIONAL/REPLACEMENT DEVICE SHALL BE OF SAME  
DESIGNATION AND OF EQUAL OR GREATER INTERRUPTING  
RATING.

**ACCESSORIES**

SERVICE BARRIER KIT	THQL5B
EQUIPMENT GROUND KIT	TKG12

THIS DEVICE MEETS E.U.S.E.R.C. SPECIFICATIONS



**WARNING**

HAZARD OF ELECTRICAL SHOCK OR BURN.  
TURN OFF POWER BEFORE WORKING  
INSIDE THIS EQUIPMENT.

**WARNING:** TO AVOID ACCIDENTAL CONTACT WITH LIVE PARTS, CLOSE ALL OPENINGS WITH BREAKERS OR FILLER PLATES. THE CIRCUIT BREAKERS IN THIS BOX HAVE BEEN SELECTED TO PROTECT THE WIRING TO AVOID DAMAGE AND LOSS OF PROTECTION, DO NOT REPLACE WITH HIGHER AMPERE RATED BREAKERS. FOR REPAIRS OR ALTERATIONS, CALL AN ELECTRICAL CONTRACTOR OR ELECTRICIAN.

**RAINTRIGHT CONDUIT HUBS**

WHEN CABINET HAS PROVISIONS FOR A CONDUIT HUB, SELECT FROM THE CHART BELOW

BUSHING PLATE

CONDUIT DIAMETER INCHES	CAP	3/4	1	1 1/4	1 1/2	2	2 1/2	3	1 1/2	2
RAINTIGHT HUB CAT.NO. AS SHOWN	TCCP	TC75	TC100	TC125	TC150	TC200	TC250	TC300	TCCP15	TCCP20

SHORT CIRCUIT CURRENT RATING OF THIS ENCLOSED PANELBOARD IS 22,000 RMS SYMMETRICAL AMPERES, 240VOLTS AC MAX. THE BREAKER SHALL HAVE MINIMUM INTERRUPTING RATING OF 22,000 AMP RMS. ADDITIONAL OR REPLACEMENT CIRCUIT BREAKERS SHALL BE OF THE SAME MANUFACTURER AND TYPE DESIGNATION AND SHALL HAVE AN EQUAL OR GREATER SHORT CIRCUIT CURRENT RATING.  
\*WATT-HOUR METER NOT INCLUDED IN SHORT-CIRCUIT RATING.

ABB INC., GREGSON DRIVE,  
CARY, INC. U.S.A  
SAL440@  
COUNTRY OF ORIGIN : MEXICO  
10084267P65 REV. A

INSTRUCTION SHEET  
1TQC183000Z2401

