



Welcome to AC500-S Safety PLC Engineering Functional Safety



ABB – Unsurpassed experience in safety automation for over 30 years

Let ABB's extensive experience in pioneering safety technology work for you with our new AC500-S Safety PLC, the latest addition to the tried and true AC500 family.

When it comes to reliability, efficiency and flexibility in safety automation, for over 30 years, ABB has been the partner experts rely on to cover even their most complex applications. Our engineers are known around the globe for their innovative and solid approach aimed at protecting people, machines, processes and the environment. And our latest development, the AC500-S Safety PLC (SIL3, PL e), is no exception: This groundbreaking safety PLC is the ideal choice when you've got a complex safety application to manage but aren't willing to make any compromises on reliability, efficiency or flexibility. Especially suited for wind turbine, crane, hoist and robot applications.

Your complex safety application, our daily business

Wind turbines

Worried about what would happen if your wind power application malfunctioned? Don't be. The new AC500-S Safety PLC from ABB offers you unsurpassed technology that lets you implement even the most challenging of safety applications – putting the power in your hands to achieve everything from speed and safety value monitoring to emergency stop functions – and that in a cost-effective way. Our wide array of safety and non-safety products allows for optimal customizing of solutions to meet your exact wind power application needs. Furthermore, you can use our AC500 modules at the base, on the tower or at the engine, giving you limitless possibilities for configuring your specific solution.

Cranes

Wherever safety is the #1 priority, ABB's AC500-S Safety PLC is your reliable partner in protecting people, buildings and machinery. Accidents like uncontrolled movement or load disengagement are not only dangerous, but also divert attention and subtract time from the real work to be done. With features like trigonometric functions and processing of analog values, the AC500-S allows you to focus on your projects without questioning the safety of your crane applications – letting our safety PLC take care of reducing downtime, increasing precision and keeping your work areas safe.

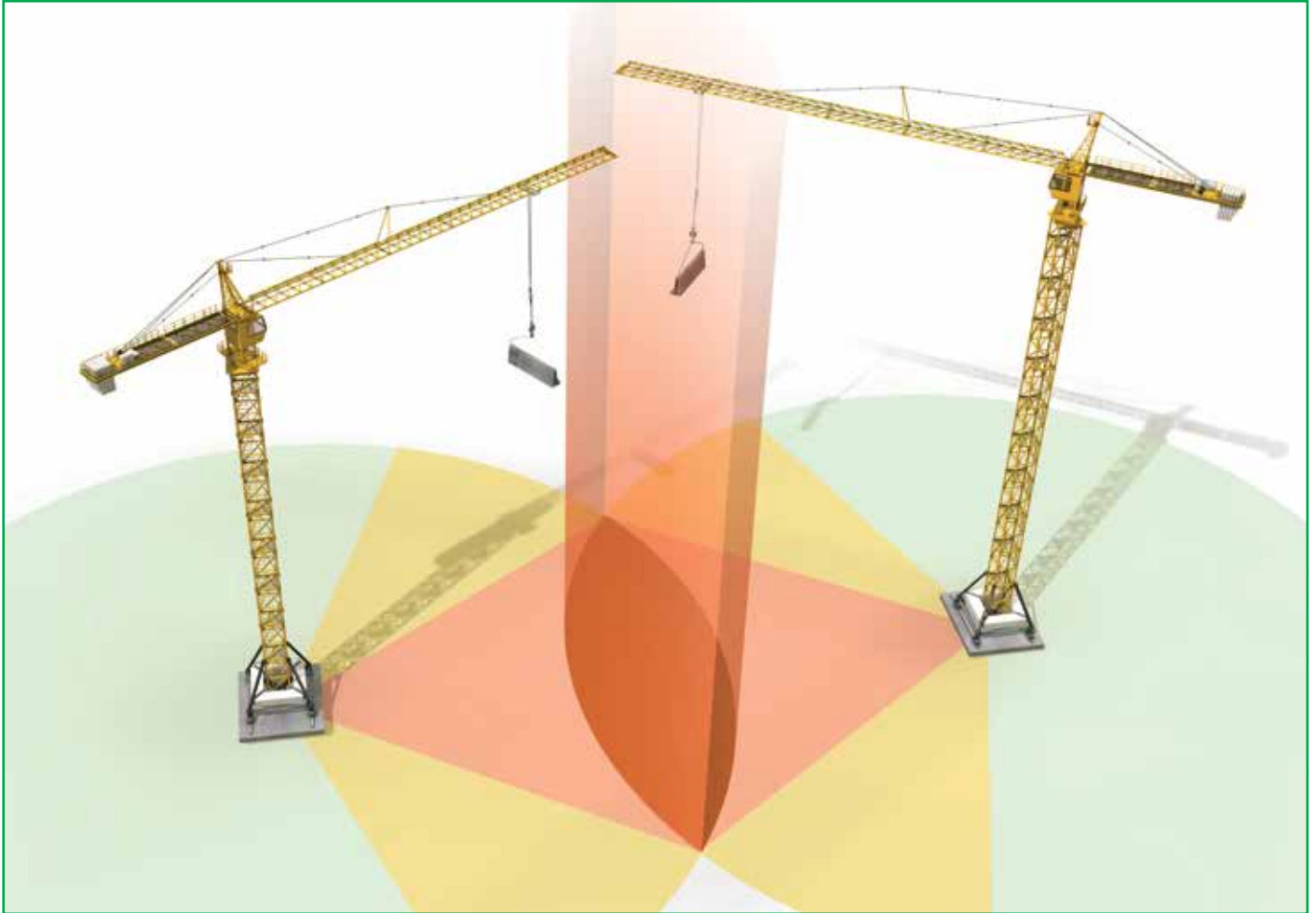
Hoists

Controlling heavy loads at high speeds requires a PLC that provides the ultimate in safety and reliability – no chances taken. ABB's AC500 family of PLCs gives hoist and elevator manufacturers a cost-effective and dependable way to be one step ahead of the competition by offering a product that has a PLC already integrated in it, cutting costs and increasing safety in one step. And with our new safety PLC, the AC500-S, you can benefit from the advantages of programming with Structured Text, a flexible and simple programming language, giving you faster application-specific safety PLC library development – an appreciated feature for hoists and other safety applications.

Robotics

When it comes to the specific needs of robotics applications, the ability to customize an application according to precise requirements is an absolute must. ABB's AC500-S Safety PLC opens the door to even more specialized and reliable robotics applications through features like digital or analog signaling and high speed CPU cycle times, giving you the state-of-the-art in safety programming. Put our pioneering technology to the test in your work areas and engine monitoring systems and benefit from immediate gains in Functional Safety.

Trigonometric functions



Safety, simplicity and reliability through an array of trigonometric functions from the preferred partner of crane manufacturers

ABB's innovative safety PLC comes with a fully-featured array of custom trigonometric functions

Our powerful set of ready-to-use functions, including COS, SIN, TAN, ASIN, ACOS and LOG, gives you the tools you need to implement even the most challenging of safety applications quickly and flexibly.

Specifically tailored to get you up and running right out-of-the-box, this new range of safety devices is the optimal choice in fields like crane and hoist engineering as well as for customized robot applications.

For truly customized safety applications, where compromises on trigonometric functions are out of the question

ABB's groundbreaking addition to the popular AC500 PLC series features a powerful array of trigonometric functions to satisfy even the most demanding industrial safety requirements.

Integrated functions out-of-the-box

ABB's new AC500-S Safety PLC sets new standards in the field of safety engineering by bringing you an incredibly powerful set of functions for trigonometric operations, including COS, SIN, TAN, ASIN, ACOS and LOG. Ideally suited for tasks such as the creation of safe motion control systems for cranes, hoists and a vast array of automated machinery, we've got your application covered.

Ready-to-use right out-of-the-box, these functions get you up and running in no time and make the use of approximation tables to implement trigonometric functions a thing of the past.

Easy and safe monitoring

Our engineers have developed the AC500-S system to make implementing tasks such as the monitoring of speed, torque and positioning states in machines with complex kinematics easier than ever before.

This is ideally suited to a broad spectrum of situations, but is especially beneficial in applications involving the control of

- cranes,
- manipulators,
- robots,
- wind power turbines,
- stagecraft machinery.

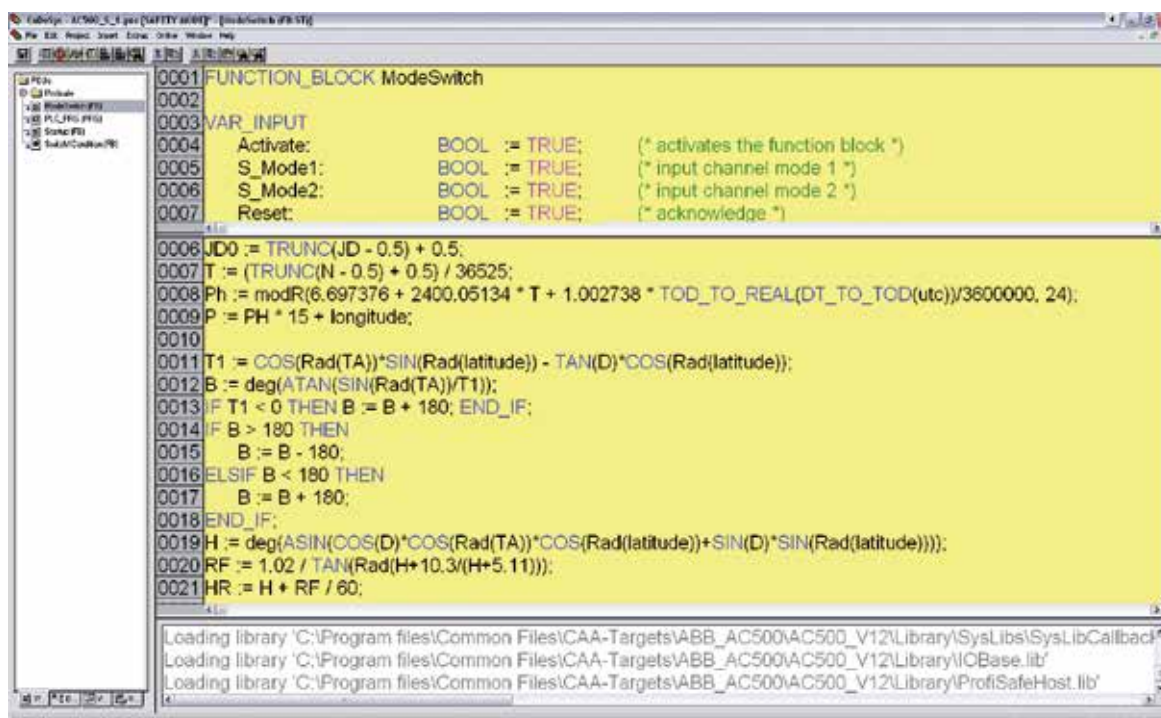
As a result, the use of position switches and proprietary electronics systems for safety applications is no longer required.

Ultimate simplicity and integration

The new AC500-S Safety PLC is fully integrated into the renowned AC500 family of modular PLCs, but adds a unique combination of safety features specifically designed to help you solve the challenges of today's safety-oriented industrial automation tasks.

Features like our simplified application engineering let you save both time and money when designing and implementing your application.

Moreover, compatibility with the PM572 right up to the PM592 CPU means it's a snap to combine with our non-safety modules, making it the obvious choice for varied environments that include safety and non-safety-oriented applications.



Use of trigonometric functions simplifies complex application programming

Safety analog current module



Performance and flexibility combined thanks to analog input on industry-standard PROFINET and PROFIsafe network technologies



Analog input module AI581-S

ABB's pioneering safety PLC features a high-speed dedicated analog current module on PROFINET with PROFIsafe

The new AC500-S offers an advanced range of safety PLC solutions providing you with unrivalled power and performance combined in a state-of-the-art integrated package from ABB, the world's leading supplier of industrial automation solutions.

Our engineers designed this innovative system around a dedicated analog current module based on PROFINET with PROFIsafe, the real-time open industrial Ethernet standard for automation – offering you extraordinary performance and flexibility for even the most challenging of safety applications.

When a real-time dedicated analog current module on PROFINET with PROFIsafe is key to your safety application

ABB's brand new addition to the renowned AC500 PLC series comes with a dedicated analog current module covering 0 to 20 mA (or 4 to 20 mA) on PROFINET with PROFIsafe, the state-of-the-art communications technology for industrial networking in automation.

More flexibility and practicality

PROFINET offers virtually real-time measurement of your critical safety values, facilitating faster, safer, more economical and higher quality manufacturing. ABB now gives you the option of connecting analog inputs in machinery applications to your PROFINET network in addition to local connection to the PLC, bringing the flexibility and practicality of Ethernet to your industrial environment.

The ultimate choice for safety measurement

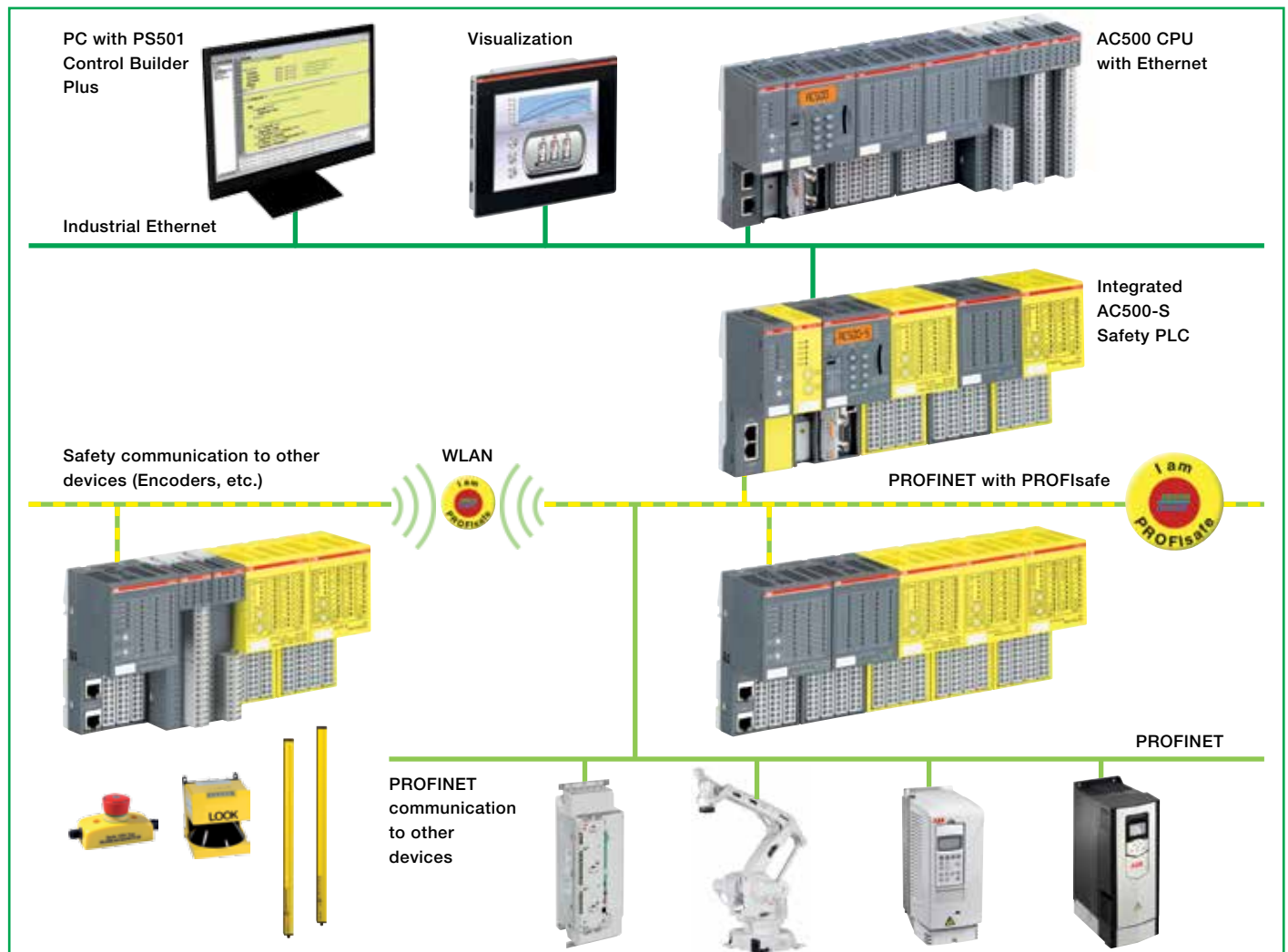
The AC500-S analog input module makes it possible to measure safety pressures, positions, torques or temperatures on your machinery applications, making it the ideal choice for applica-

tions from braking systems in hoists and lifting equipment, to positioning systems and temperature control on cranes or even selective shutdown systems on wind power turbines. And that makes the need for using AD converters or proprietary electronics for safety applications a thing of the past.

Multiple connection options

ABB's innovative AC500-S Safety PLC supports various network configurations to give you broader flexibility in the design of your application. Our system makes it possible to connect safety sensors and actuators either centrally or as part of a decentralized configuration via PROFINET with PROFIsafe. Moreover, we put the power in your hands to set up flexible connections for customized solutions in accordance with your specific requirements. And because the AC500-S is seamlessly integrated into the AC500 PLC family, it's a snap to combine it with our non-safety modules. For varied environments that include safety-oriented applications such as robots, cranes, stagecraft machinery and much more, it's the obvious choice.

Example of communication on PROFINET with PROFIsafe network



Total integration for unlimited flexibility



Mixed, integrated components for truly customized solutions

Top-down integration across the range combined with real integrated user-friendly engineering, including a standardized look and feel for safety and non-safety areas

Get the ultimate in flexibility and reliability with ABB's innovative AC500-S range of safety devices. With integrated user-friendly engineering technology for both safety and non-safety applications, programming your safety applications has never been easier.

And that's not all: We offer you a first class host of integrated hardware and software features such as standardized casings for both safety and non-safety components with the same installation concept as for the rest of the AC500 family – all designed to power you to the next level.



Product Service

CERTIFICATE

No. Z10 13 01 83652 001

Holder of Certificate: ABB Automation Products GmbH

Eppelheimer Str. 82
69123 Heidelberg
GERMANY

Factory(ies): 59269

Certification Mark:



Product: Automation Equipment, Safety Referred

Model(s): Safety PLC AC500-S (-XC)

Parameters:

Process and supply voltage:	24 VDC (-25 %...+30 %)
Operating temperature	
AC500-S:	0 °C ... +60 °C
AC500-S-XC:	-40 °C ... +70 °C
Storage / Transport:	-40 °C ... +85 °C

The report and the user documentation in the currently valid revision are mandatory part of this certificate. The product complies with the below listed safety requirements only if the specifications documented in the currently valid revision of this report are met. The certified components are listed in the following report: AH84732C according to the currently valid revision.

Tested according to:

EN 61131-2:2003
IEC 61508-1:2010 (SIL 3)
IEC 61508-2:2010 (SIL 3)
IEC 61508-3:2010 (SIL 3)
IEC 61508-4:2010 (SIL 3)
IEC 62061:2005 (SILCL 3)
EN ISO 13849-1:2008 (PL e, Cat. 4)

The product was tested on a voluntary basis and complies with the essential requirements. The certification mark shown above can be affixed on the product. It is not permitted to alter the certification mark in any way. In addition the certification holder must not transfer the certificate to third parties. See also notes overleaf.

Test report no.: AH84732C

Date, 2013-02-08

(Jürgen Blum)

Page 1 of 1



The ultimate in user-friendly engineering for even the most complex safety and non-safety applications

ABB's cutting-edge range of safety devices sets new standards in terms of integration, convenience and user-friendliness – giving you the ultimate symbiosis of safety and non-safety engineering for optimal ease of use.

Supreme integration

ABB's cutting-edge range of safety devices sets new standards in terms of integration, convenience and user-friendliness. Our engineers have designed the AC500 PLC line from the ground up to ensure our safety and non-safety system modules integrate seamlessly with one another. And that provides you with a level of flexibility, ease-of-use and adaptability that saves both time and money.

Standardized look & feel

This advanced range of PLCs is housed in smart color-coordinated polycarbonate cases featuring the same modern look and feel across the range for both safety and non-safety components. In addition, the new AC500-S comprises identical dimensions to the standard CPU and I/O modules and features precisely the same mounting and wiring concept as the rest of the AC500 family.

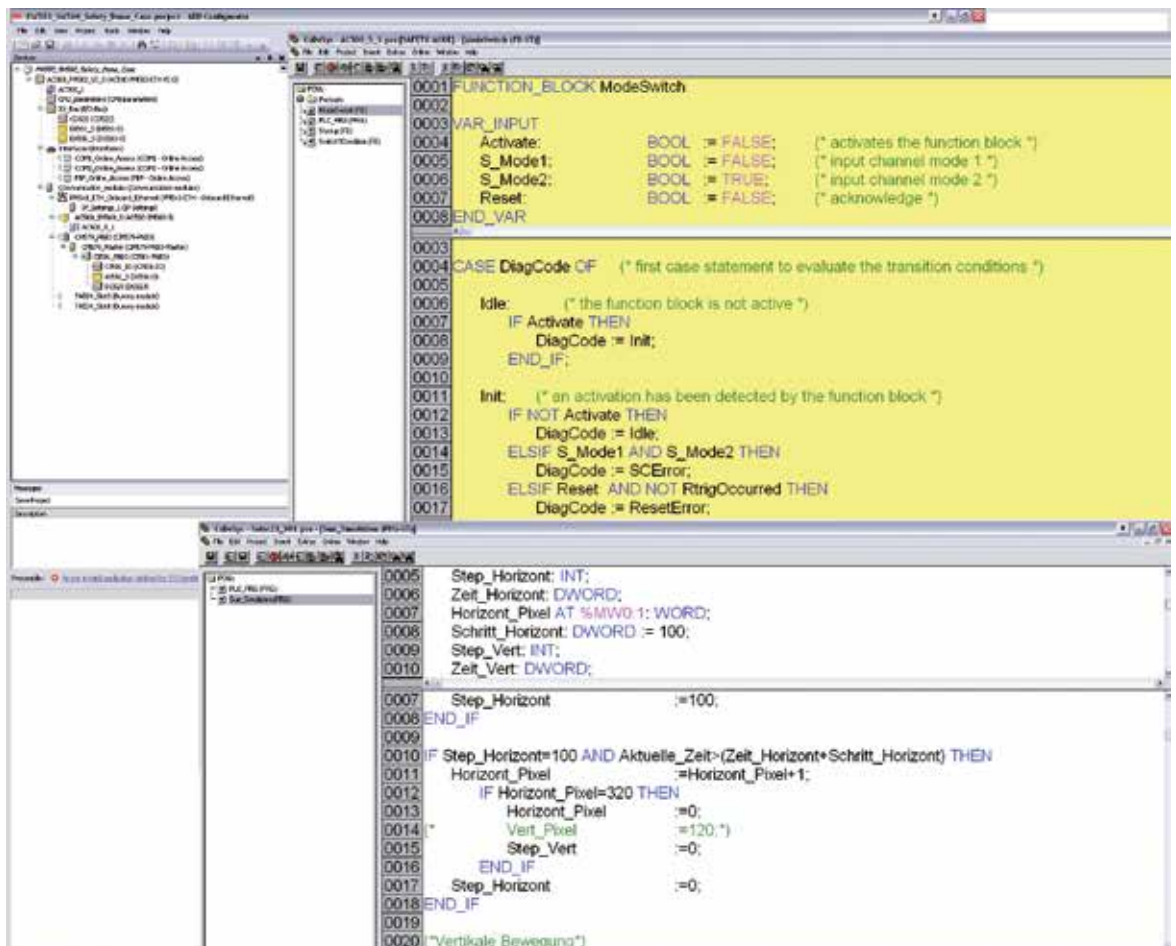
Same look & feel for safety and non-safety programming reduces engineering time and money

Integrated architecture

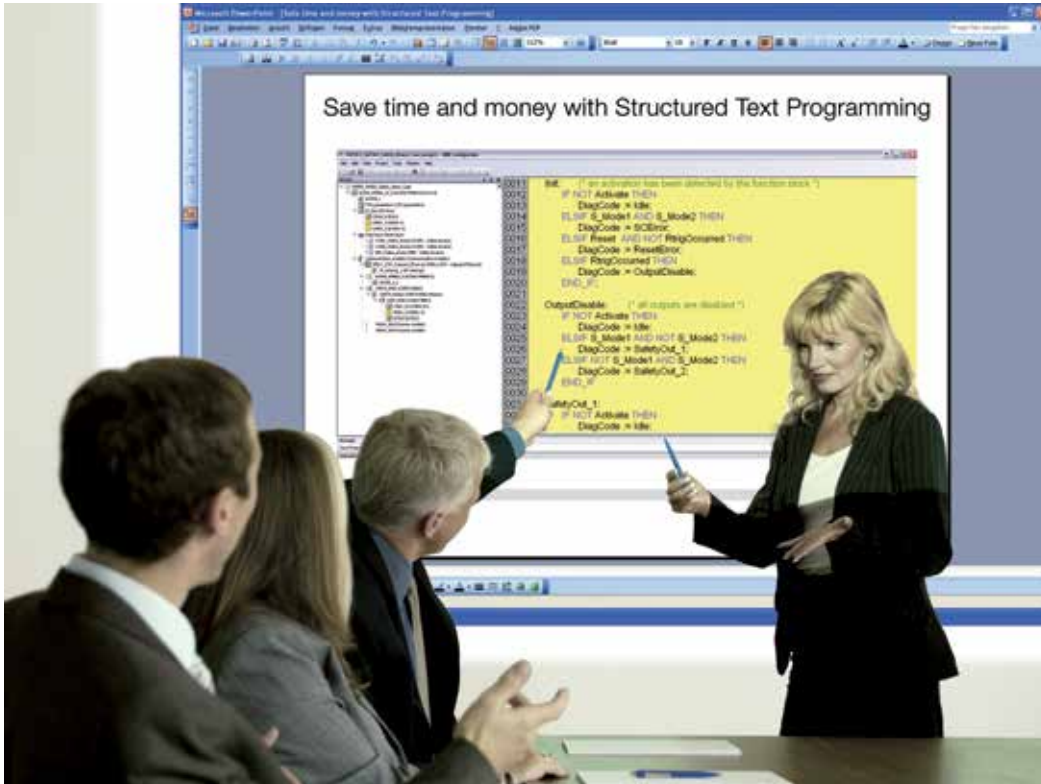
The AC500-S truly takes user-friendly engineering into the next dimension by featuring the same easy-to-learn programming environment – based on IEC 61131-3 programming editor – for safety and non-safety application programming. And that gives you new options for your applications such as direct variable mapping and data exchange between your safety and non-safety PLCs.

We've made the configuration of your safety and non-safety systems easier than ever before by streamlining its management into one single programming tool – giving you clear savings in both time and effort.

Moreover, you can vastly reduce the complexity of projects and cut down on unnecessary programming and maintenance, because you only need to be familiar with a single programming environment.



Structured Text (ST)



The powerful Structured Text editor allows even the complex solutions implemented in a much easier way

Greater flexibility and simplicity thanks to safety programming under Structured Text as well as full support for Function Block Diagram and Ladder Diagram

ABB's AC500-S Structured Text (ST) programming language is the ultimate choice for facing the challenges of modern safety applications.

This flexible and intuitive language makes it easier and more convenient than ever before to create powerful and reliable safety applications for your PLCs – while still giving you the flexibility of using Function Block Diagram (FBD) and Ladder Diagram (LD).

Structured Text

This IEC 61131-3-compatible, widely-used programming language is not only incredibly intuitive and flexible, it also makes programming your PLC easier than ever before thanks to its extremely straightforward program flow.

Although we still give you the option of using Function Block Diagram (FBD) and Ladder Diagram (LD), Structured Text saves you time and money in many ways, such as by making the implementation of complex mathematical operations a snap. The use of Structured Text also means faster application specific safety PLC library development – particularly convenient for cranes, wind turbines and robotics.

Packed with safety features

The new AC500-S Safety PLC now extends the scope of the renowned AC500 family of modular PLCs with a unique combination of safety features, all of which have been designed specifically to aid you in solving the challenges of today's safety-oriented industrial automation tasks. Because the AC500-S integrates seamlessly into the existing AC500 PLC family, it's easy to combine safety modules with our non-safety modules, making it the obvious choice for varied environments that include safety-oriented applications such as cranes, hoists, wind turbines and much more.

ABB – the only provider worldwide to offer TÜV certified Safety Code Analyzer

PS501-SCA Safety Code Analyzer tool

ABB's in-house developed PS501-SCA Safety Code Analyzer tool is tailor-made for verifying safety-related software according to IEC 61508-3 under FBD, LD and ST. This powerful tool is the optimal choice for developing application-specific safety libraries or working on concrete safety automation projects.

We put the effortless development of PLC code that conforms to the safety rules prescribed by major technical inspection agencies such as TÜV right at your fingertips. A pleasant side effect is a resulting PLC code that's more reliable, better structured, and thus more easily readable, which means lower certification effort and post-release maintenance costs.

Code verification with PS501-SCA results in lower effort towards certification and engineering cost

PS501-SCA opens the door to writing truly well-structured, easily understandable code, dramatically saving you time and money on certification.

Proven reliability

PS501-SCA has been certified by TÜV SÜD – one of the world's leading independent technical inspection associations. TÜV subjected the software to a set of stringent tests designed to push it to the limit and beyond.

The result is documented in a technical report which verifies the AC500-S Safety Code Analyzer's unique set of features, its standards compliance and its unrivaled performance in terms of safety application source code analysis.

```
1 PROGRAM EDM
2 VAR
3   SF_EDM_1: SF_EDM: (* for SCA *)
4   LS_ok1: BOOL: (* for SCA *)
5   LS_ok2: BOOL: (* for SCA *)
6   LS_ok3: WORD: (* for SCA *)
7   LS_EDM_OUT: BOOL: (* to make it SCA compliant *)
8
9 END_VAR
10
11 VAR_EXTERNAL
12   IS_DX581_PRO_INP_3_RBKK1: BOOL: (* to make it SCA compliant *)
13   IS_DX581_PRO_INP_7_RBKK2: BOOL: (* to make it SCA compliant *)
14   IS_DI581_PRO_INP_4_S3: BOOL: (* to make it SCA compliant *)
15   GS_EDM_OUT: BOOL: (* to make it SCA compliant *)
16
17
18
19
20
21
22
23
24
25
26
27
28
29
30
31
32
33
34
35
36
37
38
39
40
41
42
43
44
45
46
47
48
49
50
51
52
53
54
55
56
57
58
59
60
61
62
63
64
65
66
67
68
69
70
71
72
73
74
75
76
77
78
79
80
81
82
83
84
85
86
87
88
89
90
91
92
93
94
95
96
97
98
99
100
101
102
103
104
105
106
107
108
109
110
111
112
113
114
115
116
117
118
119
120
121
122
123
124
125
126
127
128
129
130
131
132
133
134
135
136
137
138
139
140
141
142
143
144
145
146
147
148
149
150
151
152
153
154
155
156
157
158
159
160
161
162
163
164
165
166
167
168
169
170
171
172
173
174
175
176
177
178
179
180
181
182
183
184
185
186
187
188
189
190
191
192
193
194
195
196
197
198
199
200
201
202
203
204
205
206
207
208
209
210
211
212
213
214
215
216
217
218
219
220
221
222
223
224
225
226
227
228
229
230
231
232
233
234
235
236
237
238
239
240
241
242
243
244
245
246
247
248
249
250
251
252
253
254
255
256
257
258
259
260
261
262
263
264
265
266
267
268
269
270
271
272
273
274
275
276
277
278
279
280
281
282
283
284
285
286
287
288
289
290
291
292
293
294
295
296
297
298
299
300
301
302
303
304
305
306
307
308
309
310
311
312
313
314
315
316
317
318
319
320
321
322
323
324
325
326
327
328
329
330
331
332
333
334
335
336
337
338
339
340
341
342
343
344
345
346
347
348
349
350
351
352
353
354
355
356
357
358
359
360
361
362
363
364
365
366
367
368
369
370
371
372
373
374
375
376
377
378
379
380
381
382
383
384
385
386
387
388
389
390
391
392
393
394
395
396
397
398
399
400
401
402
403
404
405
406
407
408
409
410
411
412
413
414
415
416
417
418
419
420
421
422
423
424
425
426
427
428
429
430
431
432
433
434
435
436
437
438
439
440
441
442
443
444
445
446
447
448
449
450
451
452
453
454
455
456
457
458
459
460
461
462
463
464
465
466
467
468
469
470
471
472
473
474
475
476
477
478
479
480
481
482
483
484
485
486
487
488
489
490
491
492
493
494
495
496
497
498
499
500
501
502
503
504
505
506
507
508
509
510
511
512
513
514
515
516
517
518
519
520
521
522
523
524
525
526
527
528
529
530
531
532
533
534
535
536
537
538
539
540
541
542
543
544
545
546
547
548
549
550
551
552
553
554
555
556
557
558
559
560
561
562
563
564
565
566
567
568
569
570
571
572
573
574
575
576
577
578
579
580
581
582
583
584
585
586
587
588
589
590
591
592
593
594
595
596
597
598
599
600
601
602
603
604
605
606
607
608
609
610
611
612
613
614
615
616
617
618
619
620
621
622
623
624
625
626
627
628
629
630
631
632
633
634
635
636
637
638
639
640
641
642
643
644
645
646
647
648
649
650
651
652
653
654
655
656
657
658
659
660
661
662
663
664
665
666
667
668
669
670
671
672
673
674
675
676
677
678
679
680
681
682
683
684
685
686
687
688
689
690
691
692
693
694
695
696
697
698
699
700
701
702
703
704
705
706
707
708
709
710
711
712
713
714
715
716
717
718
719
720
721
722
723
724
725
726
727
728
729
730
731
732
733
734
735
736
737
738
739
740
741
742
743
744
745
746
747
748
749
750
751
752
753
754
755
756
757
758
759
760
761
762
763
764
765
766
767
768
769
770
771
772
773
774
775
776
777
778
779
780
781
782
783
784
785
786
787
788
789
790
791
792
793
794
795
796
797
798
799
800
801
802
803
804
805
806
807
808
809
810
811
812
813
814
815
816
817
818
819
820
821
822
823
824
825
826
827
828
829
830
831
832
833
834
835
836
837
838
839
840
841
842
843
844
845
846
847
848
849
850
851
852
853
854
855
856
857
858
859
860
861
862
863
864
865
866
867
868
869
870
871
872
873
874
875
876
877
878
879
880
881
882
883
884
885
886
887
888
889
890
891
892
893
894
895
896
897
898
899
900
901
902
903
904
905
906
907
908
909
910
911
912
913
914
915
916
917
918
919
920
921
922
923
924
925
926
927
928
929
930
931
932
933
934
935
936
937
938
939
940
941
942
943
944
945
946
947
948
949
950
951
952
953
954
955
956
957
958
959
960
961
962
963
964
965
966
967
968
969
970
971
972
973
974
975
976
977
978
979
980
981
982
983
984
985
986
987
988
989
990
991
992
993
994
995
996
997
998
999
1000
```

Collecting type information from library "safetyutil_codesys_ac500_v22.lib": Done.
Collecting type information from library "syslibcallback.lib": Done.
Collecting type information from library "target_ac500_v22.lib": Done.
Collecting type information from library "iec61131-3 standard.lib": Done.
Collecting type information: Done.
Transforming FBDs to ST: Done.
Transforming LDs to ST: Done.
Analyzing rules regarding jumps: Done.
Transforming jumps to conditionals: Done.
Annotating types: Done.
Analyzing rules: Done.
System_Error 0001: Warnings are disabled
Error 0040: Comm_Error (B 17): Global variables used must be declared using VAR_EXTERNAL (DI581_S).
Error 0350: EDM (B 15): Variables other than inputs and outputs that are written to in only one program must be declared local to that program.
Error 0350: Emergency (B 12): Variables other than inputs and outputs that are written to in only one program must be declared local to that program.
Error 0040: Module_Passivation (B 1): Global variables used must be declared using VAR_EXTERNAL (AI581_S).
Error 0040: Module_Passivation (B 2): Global variables used must be declared using VAR_EXTERNAL (DX581_S).
Error 0040: Module_Reintegration (B 1): Global variables used must be declared using VAR_EXTERNAL (AI581_S).
Error 0040: Module_Reintegration (B 1): Global variables used must be declared using VAR_EXTERNAL (AI581_S).



KONFORMITÄTSBESTÄTIGUNG LETTER OF CONFIRMATION

AC500-S

Safety Code Analyzer

Hersteller:
Manufacturer:

ABB STOTZ-KONTAKT GmbH
Eppelheimer Str. 82
69123 Heidelberg

Prüfstelle:
Testing body:

TÜV SÜD RAIL GmbH
Rail Automation
Ridler Str. 57
D-80339 München

1. Allgemein / General

AC500-S Safety Code Analysis (weiter SCA genannt) ist ein Programmierool, das der Verifikation von sicherheitsgerichteter Software (erstellt in CoDeSys V2.3, siehe "Programmierhandbuch: Erstellung sicherheitsgerichteter Applikationen mit CoDeSys V2.3") bis SIL3 nach IEC 61508:2010 dient.

AC500-S Safety Code Analysis (SCA) is a Software Tool for verification of safety-relevant Software (developed using CoDeSys V2.3, see "Programming Guide: Creation of safety-oriented applications with CoDeSys V2.3") up to SIL3 according to IEC 61508:2010.

2. Version / Version

SCA Versionen: 1.0.x

3. Prüfgrundlagen / Test bases

Das zertifizierte Programmierool, nach IEC 61508-4 klassifiziert als "T2" offline Programmierool, ist zur Verifikation von sicherheitsgerichteter Software nach IEC 61508-3 geeignet.

The certified tool, classified as "T2" offline support tool according to IEC 61508-4, is suitable for the use to verify safety related software according to IEC 61508-3.

4. Zusammenfassung / Summary

Gegen den Einsatz von SCA der Fa. ABB STOTZ KONTAKT GmbH sprechen von Seiten TÜV SÜD Rail GMBH, Rail Automation, keine sicherheitstechnischen Bedenken.

TÜV SÜD Rail GmbH, Rail Automation, has no doubts as to the safety-related issues of the use of SCA.



TÜV SÜD Rail GmbH
Alfred Beer

08. März 2011

Dieser Konformitätsbestätigung wurde auf Grundlage des Review Report AC 500S Safety Code Analysis Tool erstellt.
Diese enthalten das Ergebnis einer einmaligen Untersuchung an dem zur Prüfung vorgelegten Erzeugnis.

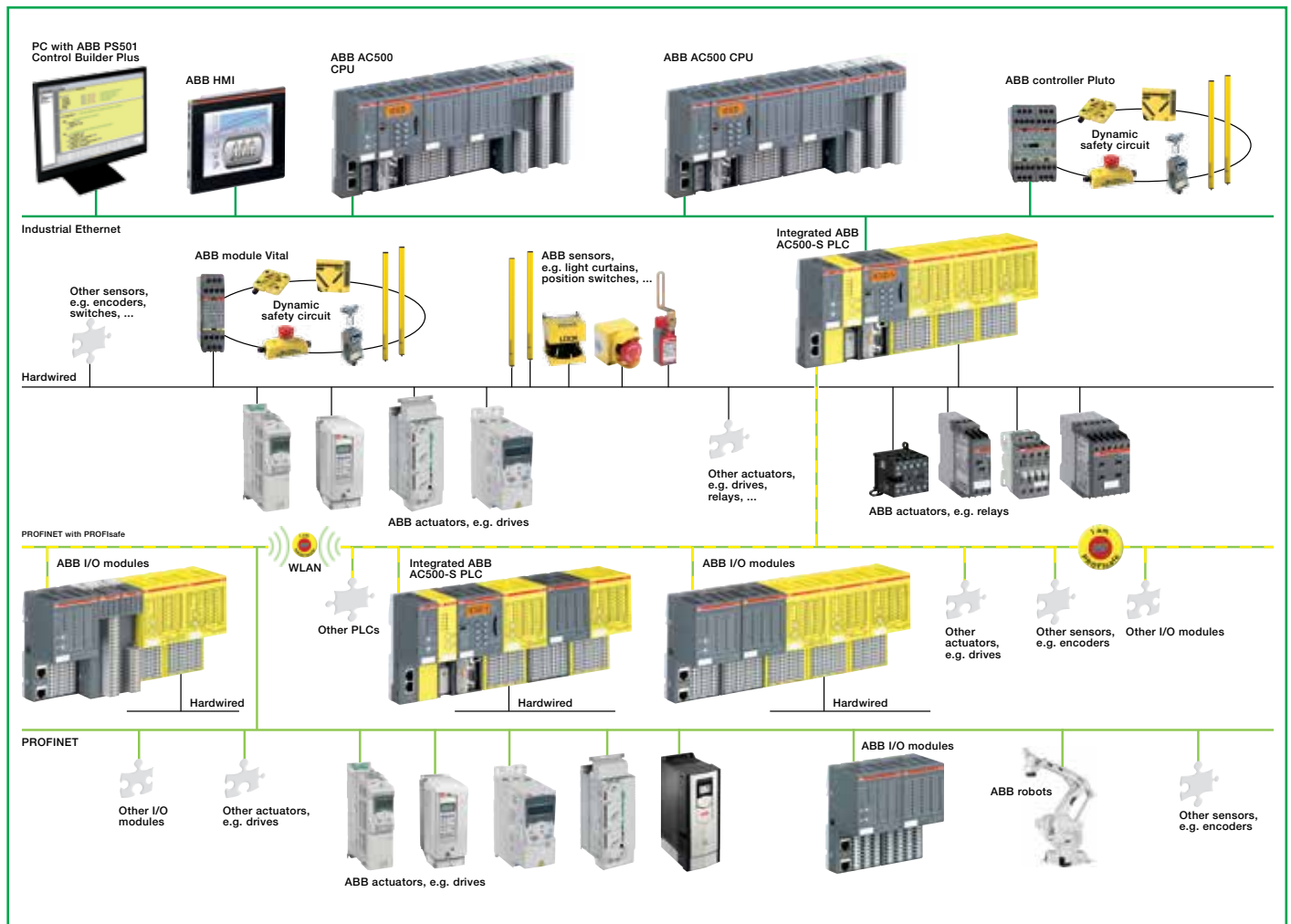
This Technical Report was created on basis of the TÜV internal Review Report AC 500S Safety Code Analysis Tool. It contains the result of a unique investigation of the product submitted for examination.

Uniqueness and key features of AC500-S Safety PLC

Key Features

- Separate Safety-CPU ensures free choice of non-safety CPU performance
- Direct connection to PNO certified safety components saves I/O modules and eliminates wiring efforts
- More number of test pulses (one of the highest in the market) ensures high degree of fault diagnostics and reaction
- Safety CPU can be configured to work even if the non-safety CPU is in STOP or maintenance mode or during online change
- Address switch on the Safety CPU allows implementing flexible configuration concept in machines (One safety program for various machine types)
- Failure of a PN slave will not STOP the safety CPU

The system solution in safety



- Standard SD card could be used to clone both safety and non-safety programs and configuration for later replication on other machines
- Max. cable length for connected process signals could go up to 1000 m (Shielded cable) or 600 m (Unshielded cable)
- Easy handling of modules (easy to remove and plug-in)
- Front panel rotary switch for PROFIsafe address ensures less maintenance effort
- Ease of wiring (spring terminals)
- 100% fool-proof system (unskilled people may not be able to RUN the safety CPU)
- Extreme condition (XC) modules are available (-40 to +70 deg C)
- Wide variety of non-safety communication possibilities like Ethernet, Modbus, CAN Open, EtherCAT, PROFIBUS, PROFINET, ASCII, FTP etc.)
- A single safety channel could be individually reintegrated
- Channel diagnostics for each individual safety channel
- Built-in module power supply (no additional 24V DC power supply needed)
- Simple expansion of a non-safety PLC system with safety functions by adding the Safety CPU and safety modules
- Safety related analog inputs in the centralized or decentralized I/O rack via PROFINET/PROFIsafe
- Non-safety and safety programming editor look just the same (short learning curve)
- Structured Text (ST) programming as per IEC 61131-3 in safety applications in addition to Ladder Diagram (LD), Function Block Diagram (FBD).
- Trigonometric functions COS, SIN, TAN, ASIN, ACOS, LOG etc. support easy implementation of complex kinematic tasks
- PLCopen Safety-Library & Programming of customized safety libraries possible
- PS501-SCA Safety Code Analyzer tool for ensuring well-structured (syntax analysis), easily understandable program code. Saves time and money towards certification issues, first of its kind in the market.
- One diagnostic system for Safety & Non-safety CPU
- Field wiring and module replacement actions are independent of each other
- Fool-proof protection implemented in all safety I/O modules (reverse signal or power supply polarity, wrong module placement, short circuit etc.)
- AC500 CPUs that support PROFINET communication could easily be engineered to have safety function with the addition of SM560-S and I/Os
- Non-safety projects could easily be upgraded to safety with the integration safety library
- Extensive user management to protect the program and configuration data
- Safety CPU ensures high data security due to no direct access through Ethernet connection
- Name setting of PROFINET slave station by rotary switches eliminate the need of engineering station during module replacement
- Safe data exchange between Safety CPUs through PROFINET/PROFIsafe gateways
- Missing PROFIsafe device on PROFINET network will not stop safety CPU program execution
- Triggering of safety drive functions through PROFINET/PROFIsafe interface
- Safe position monitoring and speed monitoring using PROFINET/PROFIsafe encoders

AC500 PLC family



ABB's AC500 series is a PLC-based modular automation solution that makes it easier than ever before to mix and match standard and safety I/O modules to expertly meet your exact requirements.

More integration and easier programming

Featuring a consistent look and feel across the entire range, the AC500 is the PLC of choice for applications where uncompromising flexibility, integration and communication are a must. Our PS501 Control Builder Plus conforms to IEC 61131-3, letting you get up and running in no time at all. And not only that: Clear configuration of the overall system with one single tool ensures optimal transparency.

With the new AC500-S Safety PLC, the latest addition to the AC500 family, ABB takes the stress out of managing even the most complex safety applications. Support for safety-relevant arithmetic operations such as COS, SIN, TAN, ASIN, ACOS and LOG makes the AC500-S ideal for applications in fields like crane engineering, wind power generation, robotics and hoist technology. Plus it gives you greater flexibility and simplicity thanks to safety programming under Structured Text (ST) as well as full support for Function Block Diagram (FBD) and Ladder Diagram (LD).

1 Standard communication module

ABB's AC500 family is packed with advanced communications technologies to bring you to the next level in communication. Combinable to form optimally scaled network nodes, we put the power to cover everything from small-scale applications to comprehensive large-scale industrial systems right in your hands. We've got all common communication standards covered, such as Ethernet, EtherCAT, PROFINET IO, PROFI-

BUS DP, CANopen, DeviceNet, Modbus TCP, Modbus serial, Serial, ABB CS31 and PROFIsafe via PROFINET.

2 Safety PLC

Just as you've come to expect from ABB, our safety PLC is SIL3 (IEC 62061, IEC 61508) and PL e (ISO 13849) certified. And an array of features such as system diagnostics provided via LEDs and onboard display of standard CPUs gives you the added diagnostic concept your applications demand.

3 Standard PLC

ABB's complete AC500 range of CPUs, from the PM572 to the PM592, can be used with our AC500-S CPU to create truly customized solutions – even for your most challenging requirements. We keep it simple by offering programming of safety and non-safety applications via a standard PLC interface.

4 Standard I/O module

With ABB's standard I/O module, the complete S500 and S500-eCo I/O module range can be connected to the standard PLC, providing you with the ultimate in flexibility and simplicity. And a wealth of functions in our configurable I/O modules allows you to get the customized and low-priced solutions you need to sustainably optimize your applications.

5 Safety I/O module

Our safety I/O modules are certified up to SIL3 (IEC 62061, IEC 61508) and PL e (ISO 13849), giving you the reliable security you need to be able to focus on what really matters – your applications. Features such as channel-wise error diagnostics and the flexibility to choose between channel-wise or module switch-off in case of channel error make working safely that much easier.

Your integrated solution

ABB's AC500 series Safety PLC integrates seamlessly into your AC500 applications to deliver our most powerful and flexible industrial automation solution ever.

Customer requirements met to perfection

Ultimate integration, simplicity, consistent expandability and flexibility are vital characteristics for any modern automation solution. This is particularly important for mechanical engineering and plant applications that demand a combination of safety and non-safety control and monitoring options. ABB's new AC500-S Safety PLC solution has been designed from the ground up to integrate perfectly into the AC500 family to offer you a never before seen level of scalability and flexibility.



28 mm space to transform your standard PLC into a safety PLC system

Homogeneous look & feel

This advanced system features a consistent look and feel across the entire range of hardware and software, regardless of whether you are building applications for safety-related or non-safety functions. Housed in tough polycarbonate cases, our modules are more than up to facing the challenges of industrial environments. And thanks to the standardized architecture of the AC500 family, adding safety functionality to your existing application could hardly be easier. Simply plug your AC500-S modules onto the busbar alongside your other AC500 components and you are good to go.

Parallel connections and more

The new AC500-S consists of different devices that can be combined and flexibly expanded to suit your individual requirements. In real terms this means you have the power, for example, to operate several field buses simultaneously in any desired combination with a single control system. Choose from a spectrum of CPU performance classes, all easy to subsequently replace to meet increasing requirements. This is particularly useful where mixed safety and non-safety features are required, because it allows for the extremely straightforward combination of I/O components. In addition, our common engineering tool, the PS501 Control Builder Plus, provides standardized programming for the entire platform according to IEC 61131-3 – and that's just one of the advanced features and utilities our PLC family has to offer.

Step into the future with PS501 Control Builder Plus

With the PS501 Control Builder Plus, you have an intuitive tool for configuration and programming of your whole AC500 system.

Our programming package is full of sophisticated features such as easy and fast configuration of the overall system including fieldbuses and interfaces, extensive diagnostic functions, advanced code checking features, alarm handling, integrated visualization and open software interfaces.

Conformity with IEC 61131-3 standards

For optimal planning, programming, testing and commissioning of your safety automation application, we also include three standardized programming languages: Function Block Diagram (FBD), Ladder Diagram (LD) and now Structured Text (ST).

Powerful visualization and testing features with PS501 Control Builder Plus

PS501 Control Builder Plus supports color change, moving elements, bitmaps, text display, and even allows for the input of setpoint values. Display of process variables read from the PLC, dynamic bar diagrams, alarm and event management,

function keys and ActiveX elements are just a few more of the features sure to make managing your application that much easier.

Easy configuration of the communication interfaces for PROFIBUS DP, PROFINET IO, CANopen, DeviceNet, Ethernet, EtherCAT, Modbus, CS31 and PROFI-safe.

Open interfaces via AC500 standard CPU

DDE and OPC alarm and events.

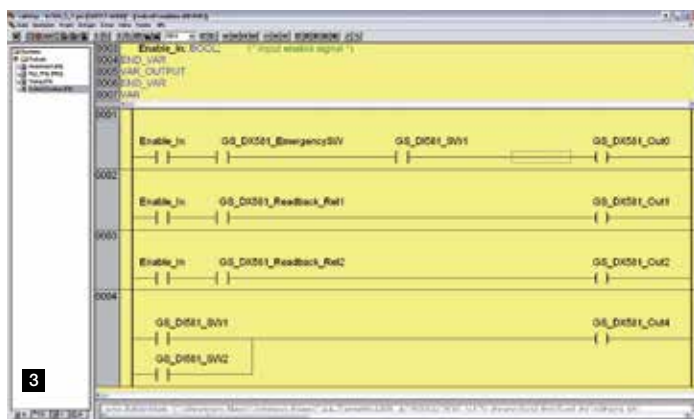
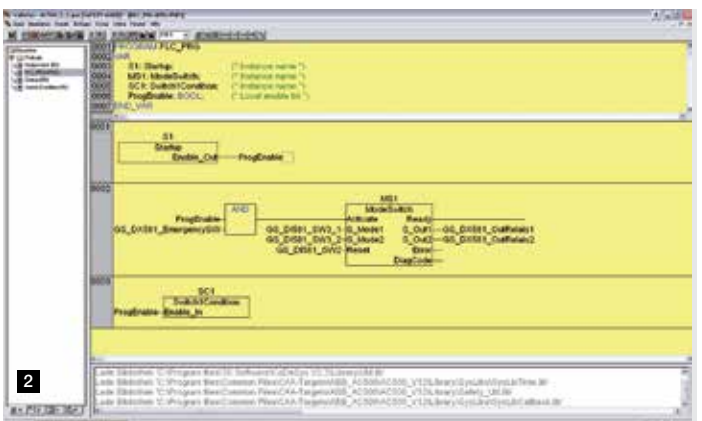
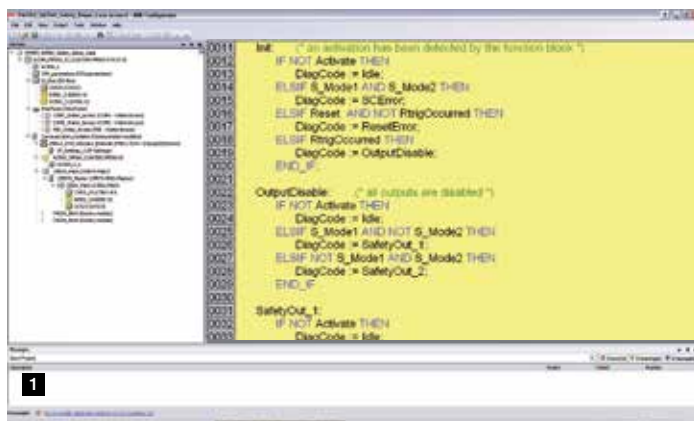
Programming

Serial, via Ethernet or network.

Web server

An integrated web server easily allows you to access the AC500 PLC through your Intranet, offering you worldwide access to your system. And configuration is extremely straightforward thanks to the PS501 Control Builder Plus software.

1 Structured Text | **2** Function Block Diagram | **3** Ladder Diagram





LETTER OF CONFIRMATION

PS501 Control Builder Plus V 2.2.x

Manufacturer:

ABB Automation Products GmbH

Eppelheimer Str. 82
69123 Heidelberg

Testing body:

TÜV SÜD RAIL GmbH
Generic Safety Systems

Barthstrasse 16
D-80339 München

1. General

PS501 Control Builder Plus V2.2.x is an engineering tool to configure, program and download safety related applications (up to SIL 3 according to IEC 61508 Ed 2) using the AC500-S Safety PLC, provided that AC500-S Safety PLC is certified for SIL3 (IEC 61508 Ed 2) and that the guidelines of safety manual of AC 500-S are followed.

2. Version

CBP Version: 2.2.x

3. Test bases


The engineering tool, implementing the certified software components SPT, S-PlugIn and CoDeSys V2.3.x safety, classified as *T3 offline support tool* according to IEC 61508-4, is suitable to develop safety related applications according to IEC 61508-3 and download to the safety controller AC 500-S.

The result is based on the documents as follows:

AC 500-S SRS	v 1.0.10
Letter of Conformity	S-PlugIn
Letter of Conformity	Safety Parameter Tool – SPT
Technical Report SK82342T	CoDeSys V2.3 Safety
Technical report Control Builder Plus	v 1.0.1

4. Summary

TÜV SÜD Rail GmbH, Generic Safety Systems, has no doubts as to the safety-related issues of the use of **PS501 Control Builder Plus V2.2.x** for safety related applications up to SIL3 according to IEC 61508 Ed 2.


TÜV SÜD Rail GmbH
Guido Neumann

München, den 21.Mai 2012

Ordering Data (1)

AC500-S Standard modules



Safety CPU

Type	Description	User program memory	Order code
SM560-S	Safety CPU module	1 MB	1SAP 280 000 R0001

S500 Safety I/O

Type	Description	Input signal	Output signal	Order code
DI581-S	Safety digital input module	16 (SIL2) or 8 (SIL3)	-	1SAP 284 000 R0001
DX581-S	Safety digital input / output module	8 (SIL2) or 4 (SIL3)	8 (SIL3)	1SAP 284 100 R0001
AI581-S	Safety analog input module	4 (SIL2) or 2 (SIL3)	-	1SAP 282 000 R0001

S500-S terminal unit

Type	Description	Order code
TU582-S	Spring terminal unit for safety I/O modules	1SAP 281 200 R0001

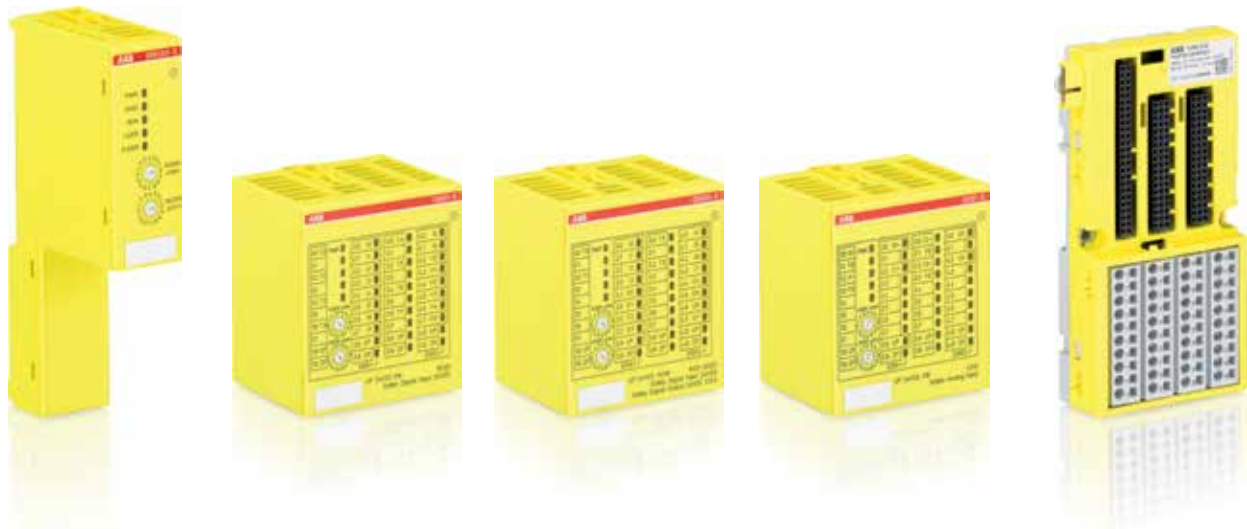
Software

Type	Description	Order code
PS501-S*	Licence enabling package for AC500-S Safety PLC programming	1SAP 198 000 R0001

*PS501 Control Builder Plus required (V2.2.1 or a later version)

Ordering Data (2)

AC500-S Extreme condition (XC) modules



Safety CPU

Type	Description	User program memory	Order code
SM560-S-XC	Safety CPU module	1 MB	1SAP 380 000 R0001

S500 Safety I/O

Type	Description	Input signal	Output signal	Order code
DI581-S-XC	Safety digital input module	16 (SIL2) or 8 (SIL3)	-	1SAP 484 000 R0001
DX581-S-XC	Safety digital input / output module	8 (SIL2) or 4 (SIL3)	8 (SIL3)	1SAP 484 100 R0001
AI581-S-XC	Safety analog input module	4 (SIL2) or 2 (SIL3)	-	1SAP 482 000 R0001

S500-S terminal unit

Type	Description	Order code
TU582-S-XC	Spring terminal unit for safety I/O modules	1SAP 481 200 R0001

Technical data (1)



Type	SM560-S / SM560-S-XC
Performance Level	PL e (ISO 13849)
Safety Integrity Level	SIL3 (IEC 61508: 2010, IEC 62061)
Safety protocol	PROFIsafe V2 via PROFINET
Program memory Flash EPROM and RAM	1 MB
Integrated data memory	1 MB thereof 120 KB saved
Cycle time for 1 instruction	
Binary	0.05 µs
Word	0.06 µs
Floating point	0.5 µs
Max. number of centralized inputs/outputs	
Max. number of safety extension modules on I/O bus	up to max. 10
Digital inputs	160 (SIL2) / 80 (SIL3)
Digital outputs	80 (SIL3)
Analog inputs	40 (SIL2) / 20 (SIL3)
Max. number of decentralized inputs/outputs	On PROFINET: up to 128 stations with up to 10 safety extension modules
Program execution	
Cyclical	✓
User program protection by password	✓
Interfaces	
Ethernet	Via non-safety AC500 CPU or PROFINET coupler
COM	Via non-safety AC500 CPU
Programming	Via non-safety AC500 CPU
Approvals	CE, cUL, UL, C-Tick

Technical data (2)



Type	DI581-S / DI581-S-XC	DX581-S / DX581-S-XC	AI581-S / AI581-S-XC
Performance Level	PL e (ISO 13849)	PL e (ISO 13849)	PL e (ISO 13849)
Safety Integrity Level	SIL3 (IEC 61508: 2010, IEC 62061)	SIL3 (IEC 61508: 2010, IEC 62061)	SIL3 (IEC 61508: 2010, IEC 62061)
Safety protocol	PROFIsafe V2 via PROFINET	PROFIsafe V2 via PROFINET	PROFIsafe V2 via PROFINET
Digital inputs			
Number of channels per module	16 (SIL2) / 8 (SIL3)	8 (SIL2) / 4 (SIL3)	-
Input signal voltage	24 V DC	24 V DC	-
Frequency range	65 Hz	65 Hz	-
Input characteristic acc. to EN61131-2	Type 1	Type 1	-
0 signal	- 3 V DC ... + 5 V DC	- 3 V DC ... + 5 V DC	-
Undefined signal state	> +5 V DC ... < + 15 V DC	> +5 V DC ... < + 15 V DC	-
1 signal	+ 15 V DC ... + 30 V DC	+ 15 V DC ... + 30 V DC	-
Input time delay (0 -> 1 or 1 -> 0)	Input filter configurable from 1, 2, 5... 500 ms	Input filter configurable from 1, 2, 5... 500 ms	-
Test pulse outputs	8	4	-
Input current per channel			
At input voltage	+ 24 V DC / 7 mA typically + 5 V DC / < 1 mA + 15 V DC / > 4 mA + 30 V DC / < 8 mA	+ 24 V DC / 7 mA typically + 5 V DC / < 1 mA + 15 V DC / > 4 mA + 30 V DC / < 8 mA	-
Digital outputs			
Number of channels per module	-	8 (SIL3)	-
Transistor outputs 24 V DC, 0.5 A	-	✓	-
Switching of 24 V load	-	✓	-
Output current			
Nominal current per channel	-	500 mA at UP = 24 V	-
Maximum (total current of all channels)	-	4 Amp. / 500 mA / channel	-
Residual current at signal state 0	-	< 0,5 mA	-
Demagnetization when switching off inductive loads	-	By internal suppressor diodes	-
Switching frequency			
Short-circuit / overload proofness	-	✓	-
For inductive load	-	On request	-
For lamp load	-	On request	-
Proofness against reverse feeding of 24 V signals	-	✓	-

Technical data (3)



Type	DI581-S / DI581-S-XC	DX581-S / DX581-S-XC	AI581-S / AI581-S-XC
Analog inputs			
Number of channels per module	-	-	4 (SIL2) / 2 (SIL3)
Input resistance per channel	-	-	125 Ohm
Time constant of the input filter	-	-	10 ms
Conversion cycle	-	-	0,33 ms
Overvoltage protection	-	-	-
Signal resolution for channel configuration			
0 ... 20 mA, 4 ... 20 mA	-	-	14 bits
Process voltage UP			
Nominal voltage	24 V DC	24 V DC	24 V DC
Maximum ripple	5%	5%	5%
Reverse polarity protection	✓	✓	✓
Fuse for process voltage UP	10 A miniature fuse	10 A miniature fuse	10 A miniature fuse
Connections for sensor voltage supply.	✓	✓	✓
Terminal + 24 V and 0 V			
Conversion error of analog values caused by non-linearity, calibration errors ex and the resolution in the nominal range	-	-	± 1,5%
Maximum cable length for connected process signals			
Shielded cable	1000 m	1000 m	-
Unshielded cable	600 m	600 m	-
Max. line length (m) of the analog lines, conductor cross section > 0.14 mm ²	-	-	100 m
Potential isolation			
Per module	✓	✓	✓
Fieldbus connection	Via non-safety AC500 CPU or PROFINET coupler		
Voltage supply for the module	Internally via extension bus interface (I/O bus)		
Approvals			
CE, cUL, UL, C-Tick			

AC500-S-XC



XC stands for extreme conditions

AC500-S applications range from Crane, Hoist, Winch, Robots, Wind, Solar etc. wherein harsh environmental conditions are expected. All AC500-S components are available as XC version as well. Physical dimensions, basic electrical characteristics and software compatibility correspond with the standard version. In many cases, this makes engineering and operations much more cost-efficient.

Benefits of XC version

AC500-S-XC benefit is cost saving in engineering and operations. Many extras become obsolete like sealing at cable entrances and doors, shock absorbers, HVAC for the panel, cooling fins and cut-outs and EMC protection



Operating in wet environment

- Increased resistance to 95% humidity



Extended EMC requirements

- EN 61000-4-5 surge immunity test
- EN 61000-4-4 transient / burst immunity test



Use at high altitudes

- Operating altitude up to 4,000 m above sea level



Extended operating temperature

- -40 °C up to +70 °C operating temperature



Extended immunity to vibration

- 4 g root mean square random vibration up to 500 Hz
- 2 g sinusoidal vibration up to 500 Hz



Extended immunity to hazardous gases and salt mist

- G3, 3C2 immunity
- Salt mist EN 60068-2-52 / EN 60068-2-11

Extreme Condition specifications (1)

Electrical requirements

Process and supply voltages

Process and supply voltage	24 V DC (-25 %, +30 % inclusive ripple)
Absolute limits	18 V...31.2 V inclusive ripple
Ripple	< 10 %
Protection against reverse polarity	yes
Allowed interruptions of power supply (DC supply)	Interruption < 10 ms, time between 2 interruptions > 1 s, PS2

Environmental Conditions

Temperature

Operating Temperature	-40 °C ... +70 °C < -30 °C: Power-up only < 0 °C: Due to the LCD technology, the display might not be readable below 0 °C. -40 °C...+40 °C (vertical mounting of module output load limited to 50 % per group) +60 °C ...+70 °C with the following deratings: <ul style="list-style-type: none">- Terminal Bases: max. 2 Communication Modules allowed- Digital inputs: maximum number of simultaneously switched on input channels limited to 50 % per group (e.g. 8 channels => 4 channels)- Digital outputs: output current maximum value (all channels together) limited to 50 % per group (e.g. 4 A => 2 A)- Analog inputs: No limitations
Storage / Transport	-40 °C ... +85 °C

Humidity

Operating / Storage	- Max. 100 % with condensation
---------------------	--------------------------------

Air pressure

Operating	-1000 m 4000 m (1080 hPa ... 620 hPa) >2000 m (<795 hPa): max. operating temperature must be reduced with 10°C (e.g. 70°C to 60°C)
-----------	--

Immunity to corrosive gases

Operating	Yes, according to: ISA S71.04.1985 Harsh group A, G3/GX IEC 60721-3-3 3C2 / 3C3
-----------	---

Immunity to salt mist

Operating	Yes, horizontal mounting only, according to: IEC 60068-2-52 severity level: 1
-----------	--

Extreme Condition specifications (2)

Electromagnetic Compatibility

Electrostatic discharge (ESD)	Yes, according to: IEC 61000-4-2, zone B, criterion B
Fast transient interference voltages (burst)	Yes, according to: IEC 61000-4-4, zone B, criterion B
High energy transient interference voltages (surge)	Yes, according to: IEC 61000-4-5, zone B, criterion B
Influence of radiated disturbances	Yes, according to: IEC 61000-4-3, zone B, criterion A
Influence of line-conducted interferences	Yes, according to: IEC 61000-4-6, zone B, criterion A
Influence of power frequency magnetic fields	Yes, according to: IEC 61000-6-2, zone B, criterion A

Radiation

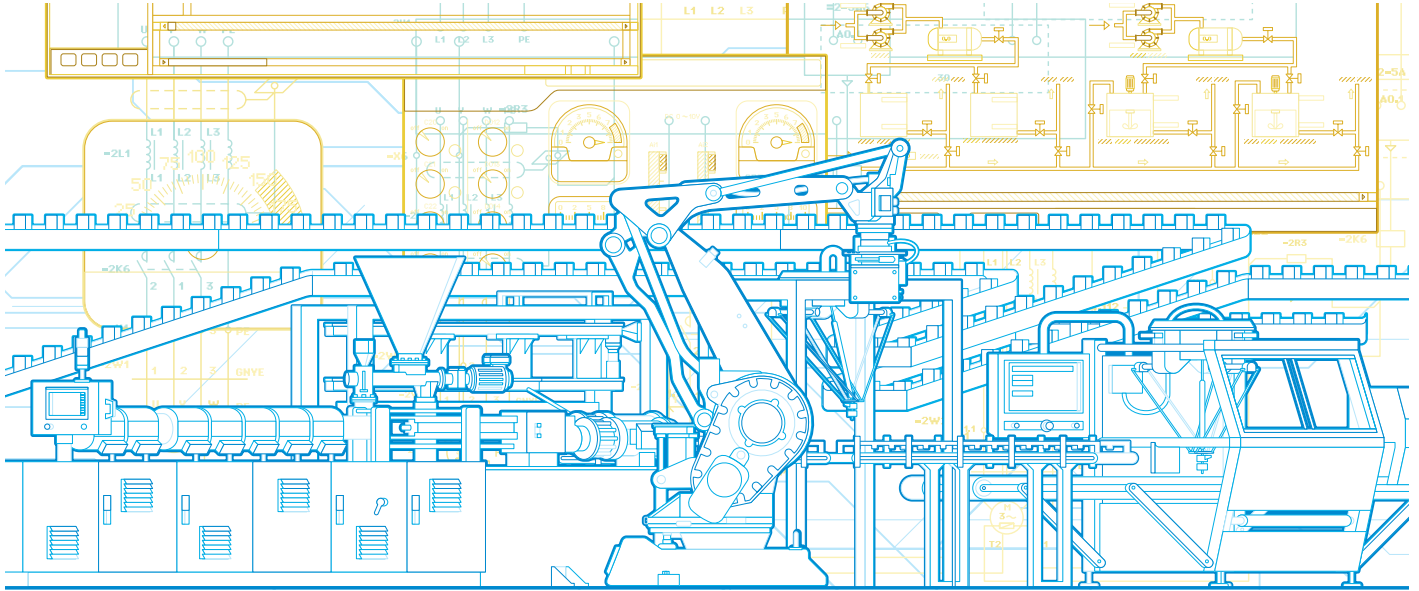
Radio disturbance	Yes, according to: IEC 55011, group 1, class A
-------------------	---

Mechanical Data

Wiring method	Spring terminals
Degree of protection	IP 20
Vibration resistance	Yes, according to: IEC 61131-2 IEC 60068-2-6 IEC 60068-2-64 IACS UR E10
Vibration resistance with SD Memory Card inserted at the PM5xx module	5 Hz ... 500 Hz, 2 g
Shock resistance	Yes, according to: IEC 60068-2-27
Mounting	DIN RAIL
Mounting position	Horizontal / Vertical (no application in salt mist environment; output load limited to 50 % per group)
DIN rail according to EN 50022	35 mm, depth 7.5 mm or 15 mm
Mounting with screws	with a diameter of 4 mm
Fastening torque	1.2 Nm

Latest software innovation from ABB

Automation Builder – Engineering Productivity



Engineering software for integrated industrial automation

Automate machines and systems in an integrated way – PLC, HMI, drives, motion and robots.

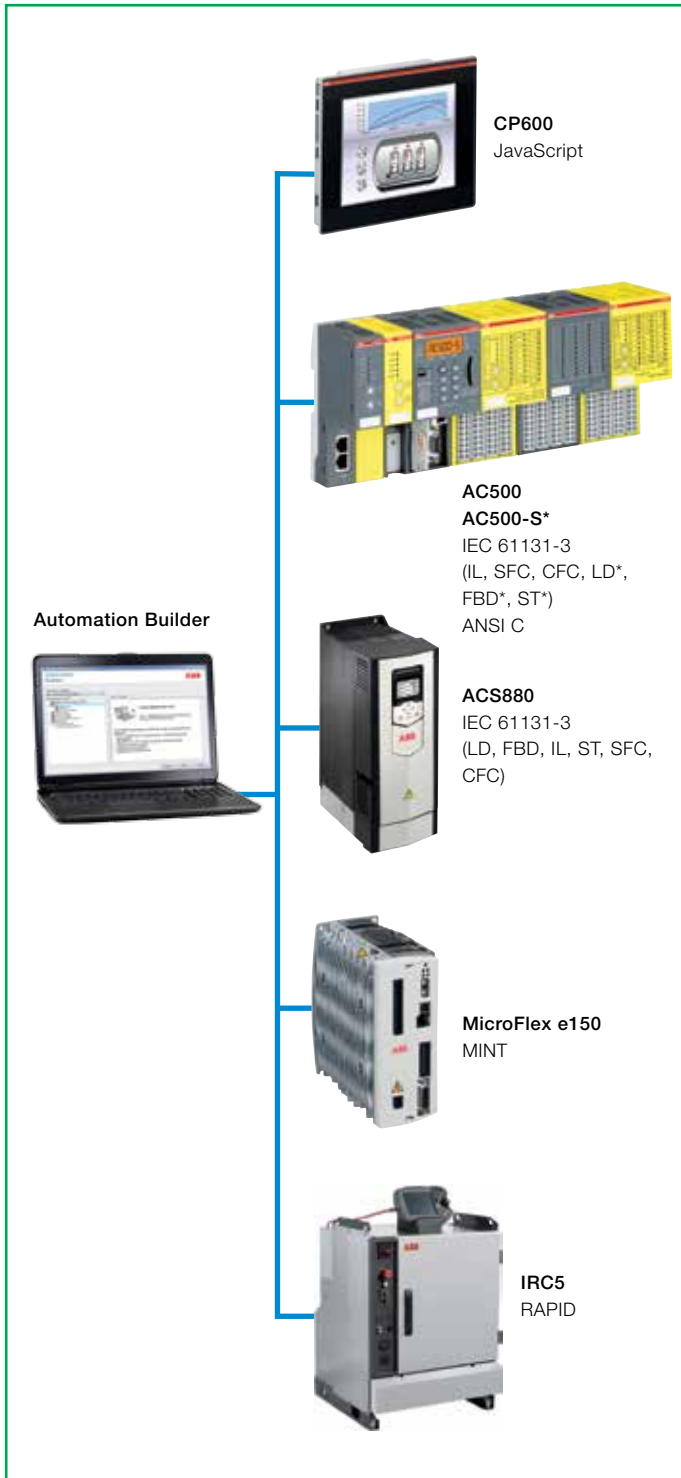
ABB Automation Builder is the new integrated software suite for machine builders and system integrators that want to automate their machines and systems in an integrated and efficient way. With this software suite, the ABB division “Discrete Automation and Motion” is reaching an important milestone on the road to achieving fully integrated engineering of discrete automation solutions including functional safety.

The software package contains the programming and configuration tool for the ABB PLC, Control Builder Plus, with electrical drives parameterization and drive application programming as integrated plug-ins. As a unique feature, ABB now includes the market leading offline robot programming and simulation tool, RobotStudio, providing customers with simple and fast interfacing of a PLC with a robot controller.

Additionally included are the Panel Builder for touch screen panel programming and the motion engineering tool, Mint Workbench. The underlying Automation Builder Platform allows common data storage and usage of common functionality by the integrated software tools.

For customers, the consistency of the ABB Automation Builder delivers significant engineering productivity improvements as well as simplified management and maintenance of the entire automation project. This helps to save time and to increase software quality by consistent data and software versions.

With the Automation Builder, various controller families can be combined in one automation project, and they can be configured and programmed from a single software suite. With a choice of various programming languages, the most suitable language for the particular application is available. At the same time, the USB-ROM distribution medium with a common installer ensures trouble-free and quick installation – on a customer-specific or project-specific basis.



The ABB Automation Builder contains the following components and functionalities:

Installation manager

The installation of the various software packages from the USB-ROM stick can be configured on a user-specific basis. The memory space on the hard disk and the installation time can thus be adapted to reflect the requirements. Individual components and update packages from ABB can easily be installed at a later date if necessary.

Engineering platform

The engineering platform is the core of the Automation Builder suite. All tools save their project data in the platform, which also provides a shared object data structure for configuration. The relevant plug-ins and tools for the different devices are started from the platform. It is also the portal for web-based content, like application examples, device descriptors, news and software updates.

Engineering of PLC AC500 and AC500-eCo

The PLC configuration, programming, debugging and diagnostics are based on the PLC engineering tool Control Builder Plus. IEC 61131-3 technology guarantees comprehensive PLC functionality. It is now also possible to perform integrated C programming via the GNU compiler for the AC500 PLC. The integration of the devices via standardized Fieldbuses ensures openness to third-party devices.

Configuration and programming of AC500-S Safety PLC

The configuration and programming of the AC500-S safety controller is seamlessly integrated into the Automation Builder. The AC500-S can optionally be combined with non-safe devices in the project. The programming takes place analogously to the standard PLC, but with a safety-certified editor in accordance with SIL 3 (IEC 62061) and PL e (ISO 13849). Unique features that should be emphasized are the safety programming in Structured Text (ST) and the use of trigonometric functions, for example for kinematic calculations.

Human Machine Interface – CP600 touch panels

The Automation Builder also offers various options for flexibly creating a user interface for the ABB control panel family CP600, using web visualization or the Panel Builder 600 V1.8. Here joint project data management is implemented, too.

Configuration and programming of drives

The updated, integrated Drive Manager permits the remote configuration and online diagnostics of ABB low-voltage drives via the PLC network, which speeds up commissioning and diagnostic of the entire system. A new feature is the application programming of the ABB industrial drive ACS880 with an embedded PLC based on IEC 61131-3. System integrators and machine builders can utilize the drive-based control with the drive's inputs and outputs to implement cost-effective, decentralized control.

Motion control – MicroFlex e150 servo drive

With the integration of Mint Workbench V5706 into the Automation Builder, it is now possible to use the EtherCAT servo drive MicroFlex e150 with an AC500 as central multi-axis motion controller. A dedicated motion control library based on PLCopen is available. Hereby, the ABB motion control offering around the MINT product lines NextMove, MotiFlex and MicroFlex is extended by a PLC-based solution.

Robot interface – IRC5 robot controller

The latest version of RobotStudio, the software tool for the configuration, programming and simulation of ABB robots, is part of the Automation Builder suite. Essential new features of version 5.15 are improved ease of use, new robot models and the option to import larger amounts of CAD data by Windows 64-bit support. The robot controller is quickly connected to the AC500 PLC as a fieldbus device. Common fieldbus I/O signals are defined and transferred to RobotStudio. From there, the IRC5 I/O communication can then be configured easily and consistently. This means that the PLC and the robot become part of the same automation project and inconsistent interfaces are now a thing of the past.

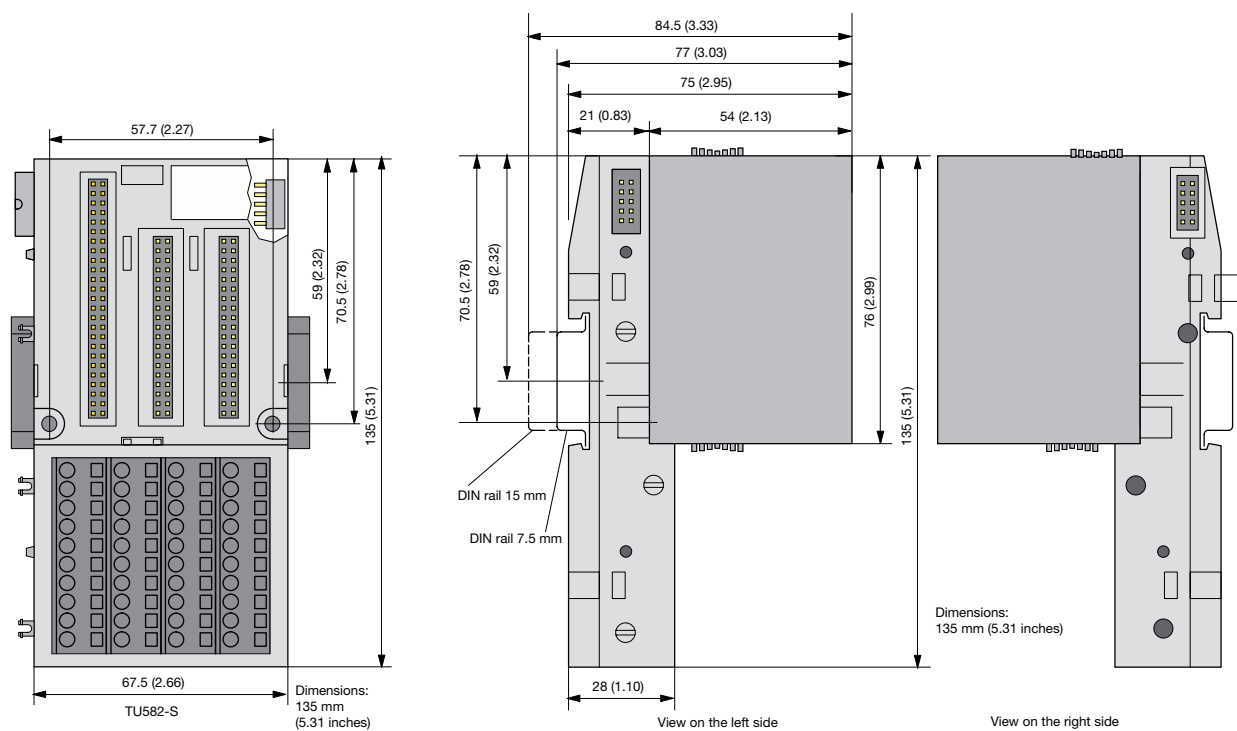
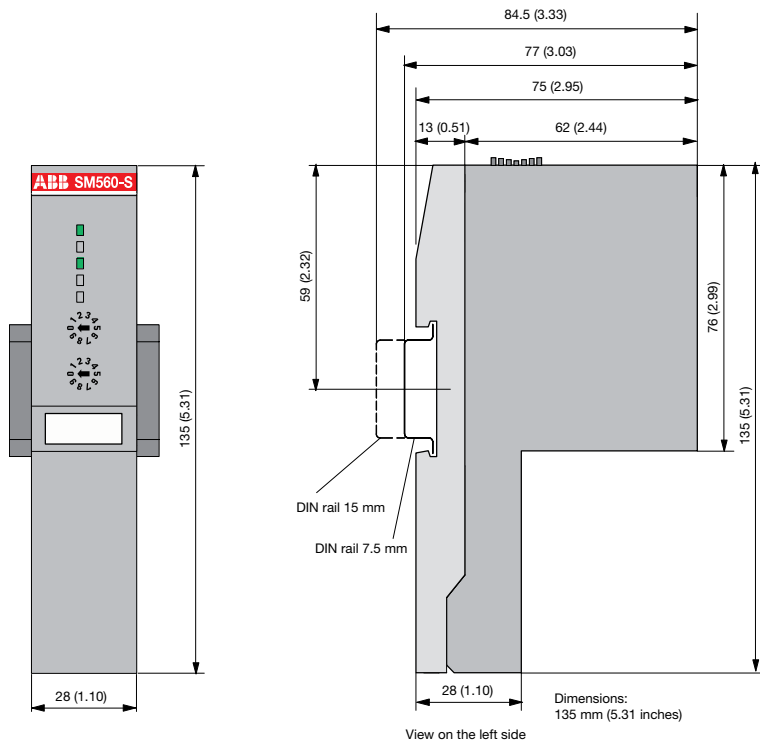
Migration and availability

Automation Builder contains Control Builder Plus, RobotStudio, Mint Workbench and Panel builder. All software except Control Builder Plus could still be ordered separately, if required by the customers.



Dimensions

Dimensions: mm (inches)



Contact us

ABB Automation Products GmbH

Wallstadter Str. 59

68526 Ladenburg, Germany

Phone: +49 (0) 6221 701-1444

Fax: +49 (0) 6221 701-1382

Email: plc.sales@de.abb.com

www.abb.com/plc

www.abb.com/drives

ABB Global Contact Directory

The ABB Contact Directory (<http://www.abb.com/contacts/>) helps you find local contacts for ABB products in your country.

Please select the relevant product group from the dropdown menu to the right or from the page.

Note:

We reserve the right to make technical changes or modify the contents of this document without prior notice. With regard to purchase orders, the agreed particulars shall prevail. ABB AG does not accept any responsibility whatsoever for potential errors or possible lack of information in this document.

We reserve all rights in this document and in the subject matter and illustrations contained therein. Any reproduction, disclosure to third parties or utilization of its contents – in whole or in parts – is forbidden without prior written consent of ABB AG.

Copyright© 2013 ABB

All rights reserved