
 TECHNICAL DATA SHEET

Ferrules, covered

For NSGAFÖU conductors

Spec-Kon®



Polypropylene covered Ferrules are thin-walled copper tubes, which are mechanically crimped onto the ends of stranded wires.

Application:

- Polypropylene covered ferrules for use with NSGAFÖU VDE certified conductors ranging in size from 1.5 to 16mm²
- Tools
 - ERG4
 - ERG9000EX
 - FER9500
 - FER9501

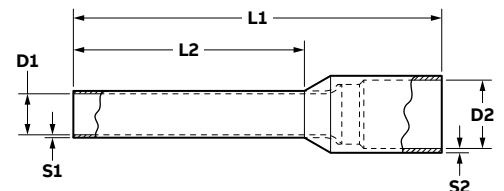
Ferrules, covered
For NSGAFÖU conductors

Color designation:

- Part nos. ending in “D” use DIN standard colors

Material:

- Ferrule, tin-plated copper
- Cover, polypropylene



Product selection

Part no:	Wire size (mm ²)	Color	Dimensions (mm)						Tool 1	Tool 2	Tool 3
			D1	D2	L1	L2	S1	S2			
FER1508P-SCD	1.5	Black ■	1.8	6.4	17.5	8	0.15	0.3	ERG4	FER9500	FER9501
FER1510P-SCD	1.5	Black ■	1.8	6.4	19.5	10	0.15	0.3	ERG4	FER9500	FER9501
FER2508P-SCD	2.5	Blue ■	2.3	7.3	17.5	8	0.15	0.3	ERG4	FER9500	FER9501
FER2512P-SCD	2.5	Blue ■	2.3	7.3	21.5	12	0.15	0.3	ERG4	FER9500	FER9501
FER4010P-SCD	4	Gray ■	2.9	7.3	19.5	10	0.2	0.3	ERG4	FER9500	FER9501
FER6012P-SCD	6	Yellow ■	3.6	8.1	23	12	0.2	0.3	ERG4	FER9500	FER9501
FER10012P-SCD	10	Red ■	4.6	9.6	24	12	0.2	0.3	ERG4	FER9500	FER9501
FER16012P-SCD	16	Blue ■	6	11.9	25.5	12	0.2	0.3	ERG4	N/A	N/A

Note: Product must be installed in accordance with applicable national and local electrical codes.