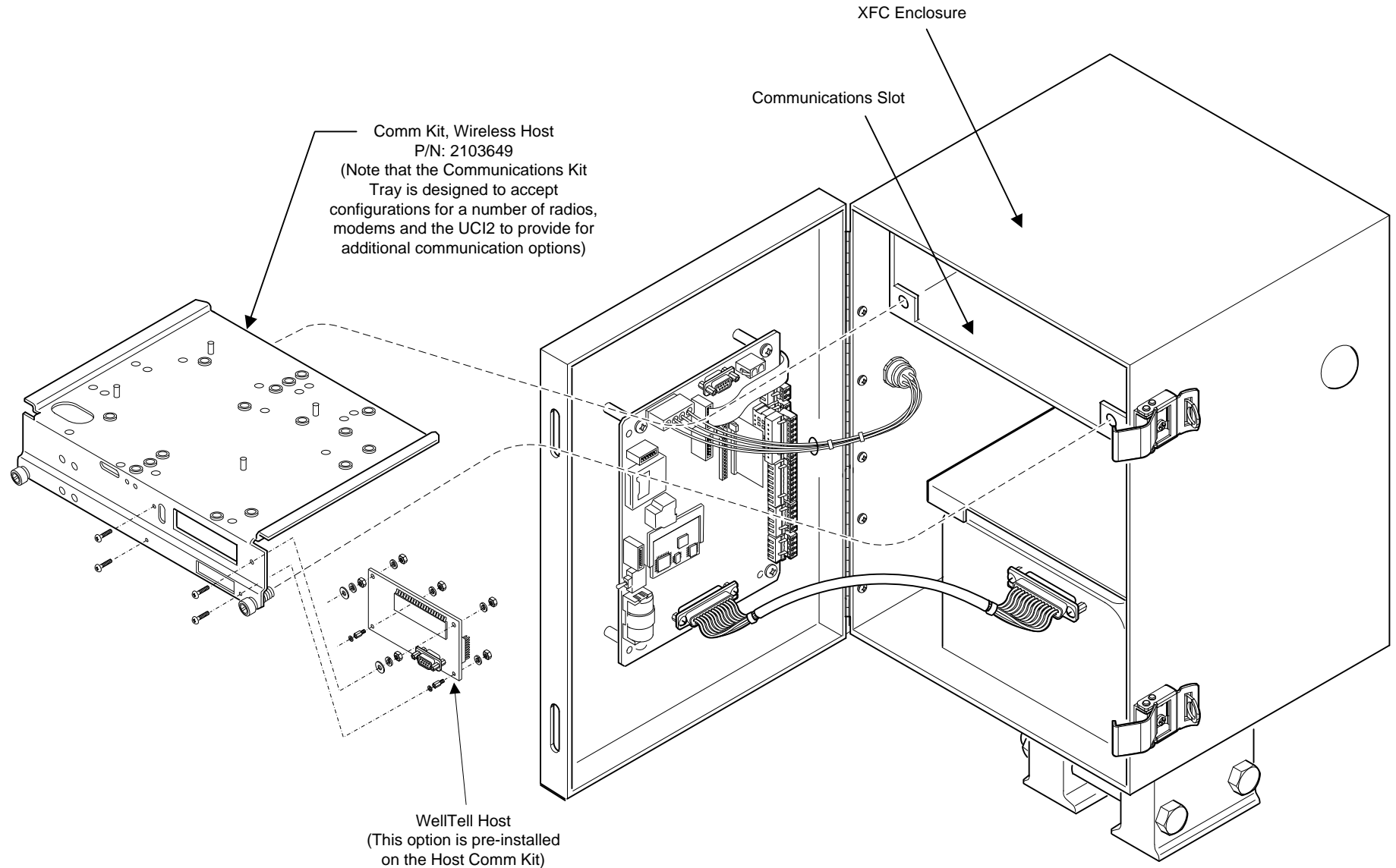


NOTES:

1. WARNING: This drawing does not illustrate the installation methods required for hazardous locations. Prior to any installation in a Classified Hazardous Location, verify installation methods by the Control Drawing referenced on the product's name tag and national and local codes.

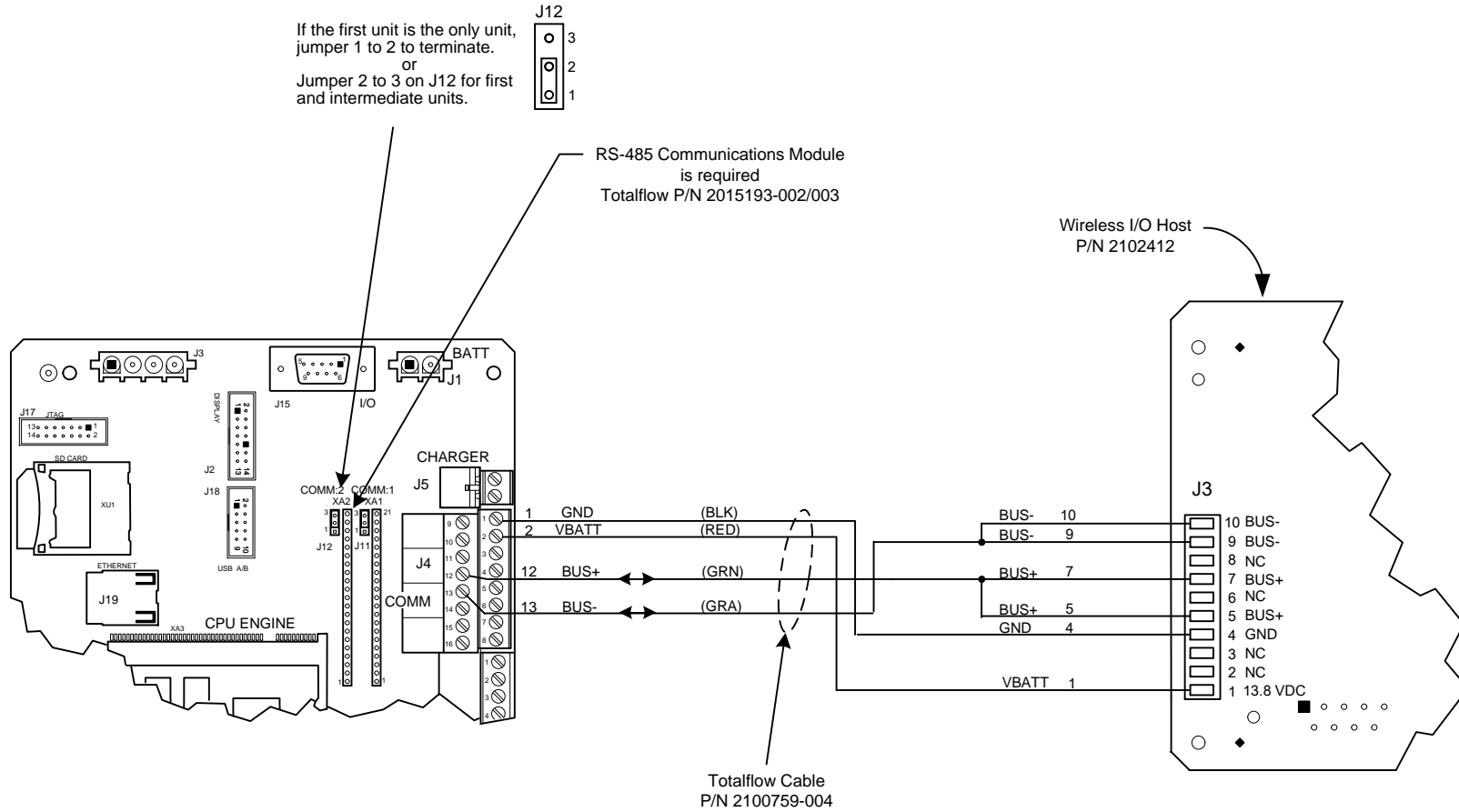


REF:N/A

	TOTALFLOW Products	ACTION	DOC TYPE	TITLE	DWG NO.	REV	SHEET
		D30166	UD	XFC ^{G4} (2103328 BD) COMM 2 (RS-485) TO WIRELESS I/O HOST (2102412 BD)	2104219	AB	1 OF 2

NOTES:

1. WARNING: This drawing does not illustrate the installation methods required for hazardous locations. Prior to any installation in a Classified Hazardous Location, verify installation methods by the Control Drawing referenced on the product's name tag and national and local codes.



REF:N/A

ABB TOTALFLOW Products	ACTION	DOC TYPE	TITLE	DWG NO.	REV	SHEET
	D30166	UD	XFC ^{G4} (2103328 BD) COMM 2 (RS-485) TO WIRELESS I/O HOST (2102412 BD)	2104219	AB	2 OF 2