

Steel City® double snap-in connectors

Speed. Strength. Simplicity.

Steel City



Steel City double snap-in connectors deliver fast, code-compliant cable terminations for residential, commercial, retrofit and industrial applications. Designed for quick, tool-free installation, they ensure a secure, durable connection between your electrical box and cable.

Know the market

Electrical contractors today work in fast-paced, space-restricted environments — from large-scale multi-family builds and commercial fit-outs to tight retrofit jobs and industrial conduit runs. Whether terminating one or two cables, installing in open framing or finished walls, or navigating directional changes, **professionals need efficient, tool-free solutions that deliver reliable performance.**

Understand challenges

Traditional fittings can be slow, cumbersome and costly — requiring multiple tools, separate locknuts or tedious assembly steps. In fast-moving or overhead work, these delays compound labor time, increase dropped parts and heighten the risk of rework. For both new construction and retrofit jobs, **installers need simplified, reusable connectors that don't sacrifice strength or code compliance.**

Deliver solutions

The Steel City double snap-in connector series solves these challenges with patented spring-tab technology that allows secure, tool-free installations in seconds. Whether installing a single cable, dual cable, directional (90°) feed or retrofitting into finished walls, **these fittings eliminate the need for locknuts and preserve wall integrity.**

Materials and finishes

All models built for durability and performance:

- Body: Die-cast zinc alloy
- Clamp: Electroplated spring steel or zinc-electroplated steel
- Insulator: Pre-installed durable plastic

Key differentiators

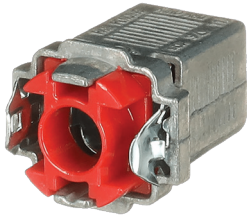
- 90° offerings are ideal for tight bends where installation space is limited
- Cut-in and 90° options — For directional flexibility and retrofit installs
- Tool-free snap-in design — Installs fast with spring tabs — no tools or locknuts required
- Reusable and repositionable — Easily removed from knockouts for reuse or adjustment
- Pre-installed insulators — Durable plastic inserts protect conductors and won't fall out
- Multiple cable support — Supports one or two runs depending on model





**Designed for fast,
code-compliant
cable terminations**

Technical specs by model



XC-140



3/8" double snap-in single cable connector

- Use case: Standard cable runs
- Fits: 1/2" knockouts
- Terminates:
 - AC 14-2 to 10-2 (aluminum/steel)
 - MC/MCI-A/HCF 14-2 to 10-3 (aluminum/steel)
 - 3/8" FMC and RWFMC (aluminum/steel)

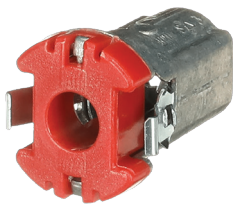


XC-150



3/8" double snap-in connector for 2 AC/MC cables

- Use case: Dual cable terminations in a single knockout
- Fits: 1/2" knockouts
- Terminates:
 - AC 14-2 to 10-3 (aluminum/steel)
 - MC/MCI-A/HCF 14-2 to 10-3 (aluminum/steel)
 - 3/8" RWFMC (aluminum/steel)



XC-160



3/8" cut-in double snap-in connector

- Use case: Retrofit/old work installs
- Fits: 1/2" knockouts
- Terminates:
 - AC 14-2 to 10-3 (aluminum/steel)
 - MC/MCI/HCF 14-2 to 10-3 (aluminum/steel)



XC-170



XC-180

90° double snap-in lock squeeze connectors

- Use case: Tight bends and directional runs
- Fits: 1/2" knockouts
- Models:
 - 3/8" model (XC-170):
 - AC 14-2 to 10-3 (aluminum/steel)
 - MC/MCI-A/HCF 14-2 to 10-4 (aluminum/steel)
 - 3/8" RWFMC
 - 1/2" model (XC-180):
 - AC 8-2 to 8-3 (aluminum/steel)
 - MC/MCI-A/HCF 8-2 to 8-3 (aluminum/steel)
 - 1/2" RWFMC

Steel City

products with
THE METAL
for the job