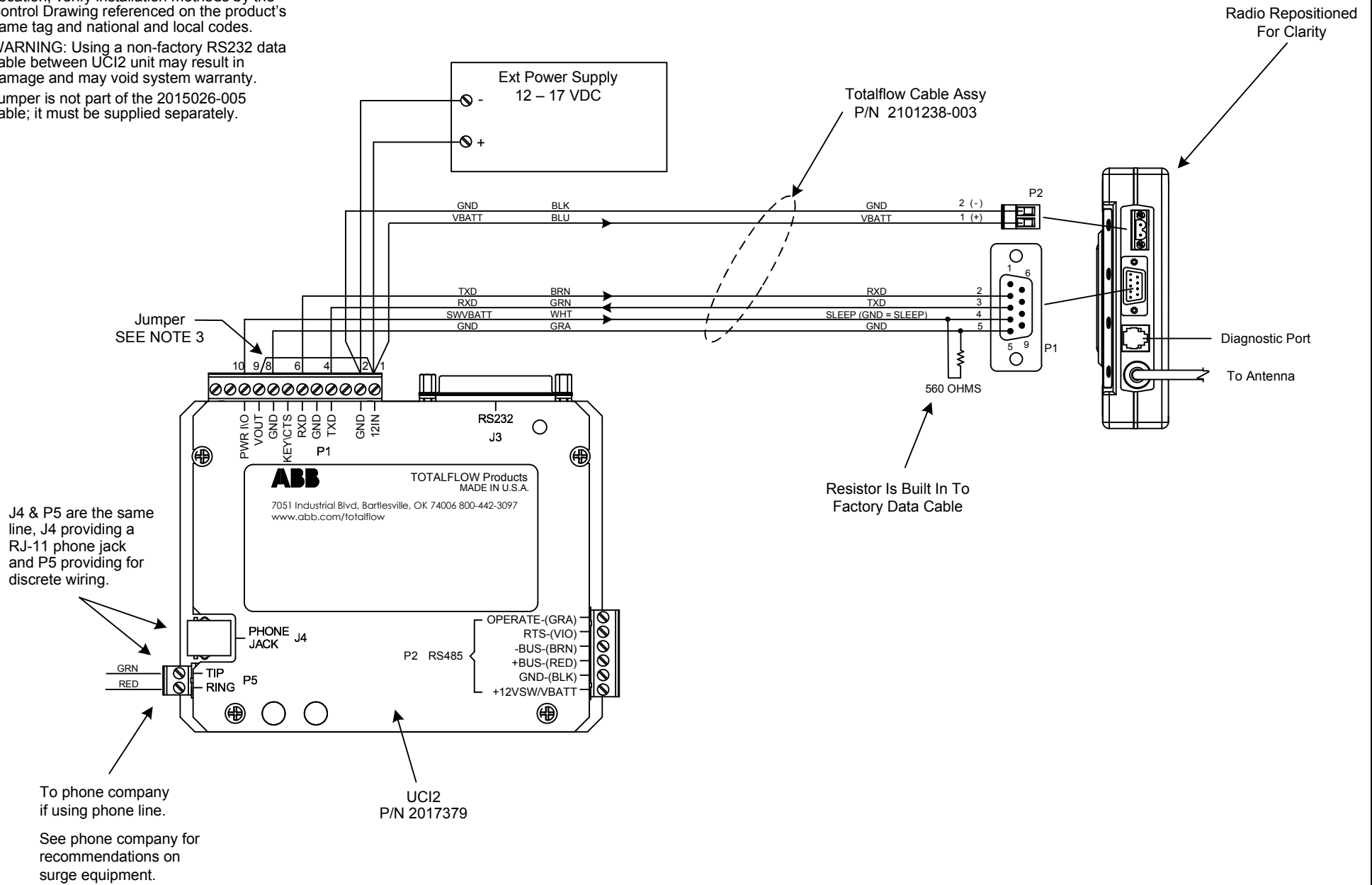


NOTES:

1. WARNING: This drawing does not illustrate completely the installation methods required for hazardous locations. Prior to any installation in a Classified Hazardous Location, verify installation methods by the Control Drawing referenced on the product's name tag and national and local codes.
2. WARNING: Using a non-factory RS232 data cable between UC12 unit may result in damage and may void system warranty.
3. Jumper is not part of the 2015026-005 cable; it must be supplied separately.



J4 & P5 are the same line, J4 providing a RJ-11 phone jack and P5 providing for discrete wiring.

To phone company if using phone line.

See phone company for recommendations on surge equipment.

REF: N/A

ABB TOTALFLOW Products	ACTION	DOC TYPE	TITLE	DWG NO.	REV	SHEET
	L19085	UD	UC12 W/EXT SWITCHED PWR TO MDS TRANSNET 900 RADIO (RS-232)	2102916	AA	1 OF 1