

Gas-insulated switchgear type ZX2



Gas-insulated switchgear type ZX2

Medium voltage switchgear type ZX2

- 12 kV, ...2500 A, ...40 kA
- 24 kV, ...2500 A, ...40 kA
- 36 kV, ...2500 A, ...40 kA



Gas-insulated switchgear type ZX2



Double busbar panel

Rated voltage	kV	12	24	36	
Rated current of busbars	A	... 2500	... 2500	... 2500	
Rated current of tee-offs	A	... 2500	... 2500	... 2500	
Rated short-circuit breaking current	kA	... 40	... 40 ¹⁾	... 40 ¹⁾	
Insulating gas		SF ₆ ²⁾	SF ₆ ²⁾	SF ₆ ²⁾	
Width	a	mm	600 / 800 ³⁾		
Height	b	mm	2300	2300	2300
Depth	c	mm	1760	1760	1760

¹⁾ 600 mm panel width up to 25 kA rated short-circuit breaking current

²⁾ Insulating gas: sulphur hexafluoride (SF₆)

³⁾ Rated feeder current above 1250 A

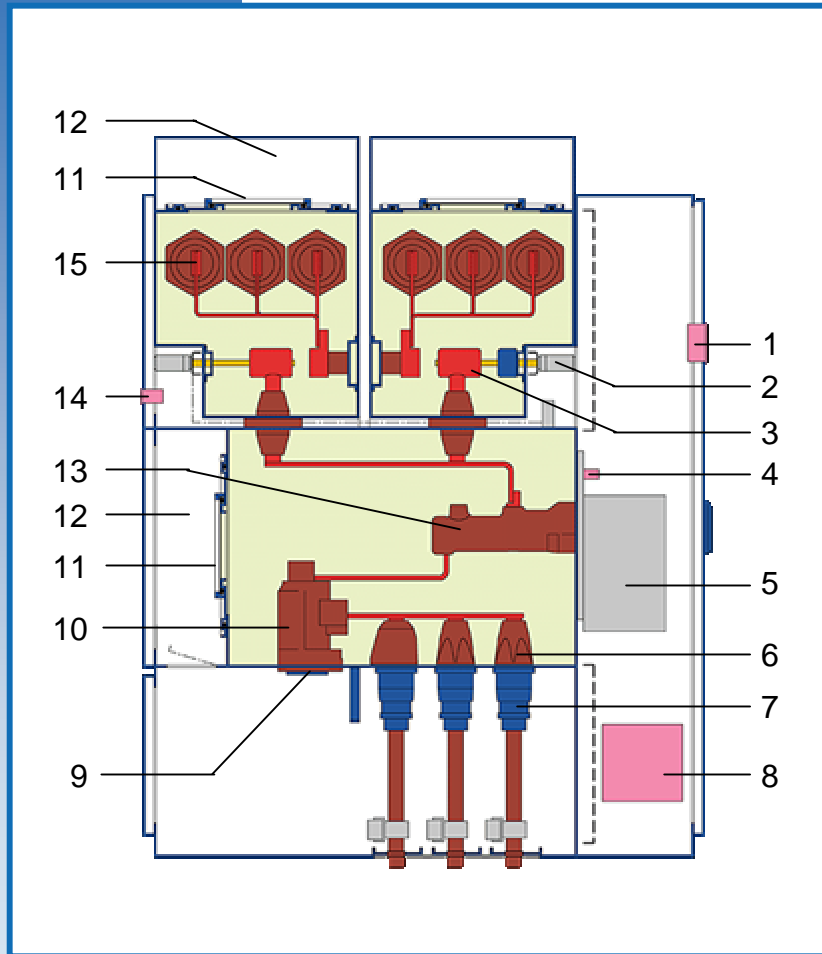
Gas-insulated switchgear type ZX2

Design

- Each gas compartment is a sealed pressure system
- SF₆ gas-insulated
- Modular structure
- Laser welded stainless steel enclosures
- Panels connected by plug-in busbar connectors requiring no gas work
- Inner cone cable plug systems in sizes 2 and 3
- Test socket size 2 in each cable panel
- Solid-insulated bar connection possible
- Pressure relief via pressure relief ducts



Gas-insulated switchgear type ZX2



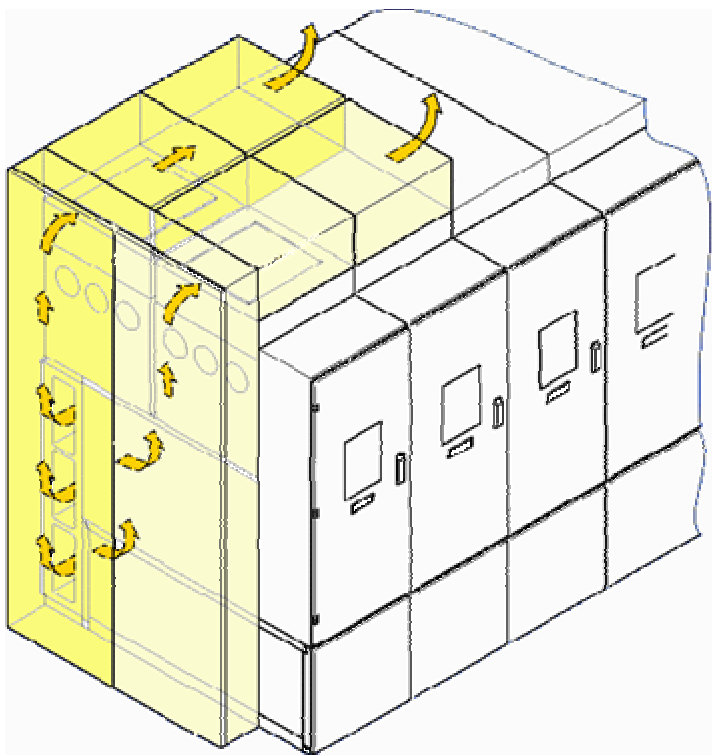
Double busbar panel for 1250 A

- 1 HMI of REF542 *plus*
- 2 Three position switch operating mechanism
- 3 Three position switch
- 4 Pressure sensor (temperature-compensated)
- 5 Circuit-breaker operating mechanism
- 6 Cable socket
- 7 Cable plug
- 8 Electronic unit of REF542 *plus*
- 9 Dummy plug
- 10 Combined current sensor with socket
- 11 Pressure relief disc
- 12 Pressure relief duct
- 13 Circuit-breaker
- 14 Measuring sockets for capacitive voltage indicator system
- 15 Busbars

■ SF₆

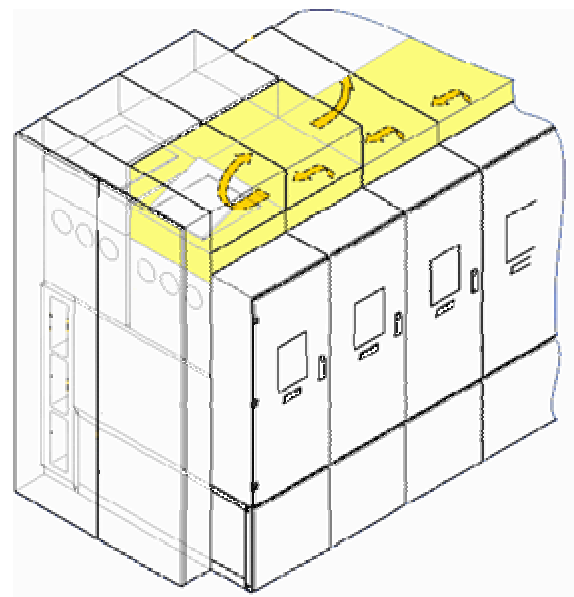


Gas-insulated switchgear type ZX2



Relief for circuit-breaker and cable termination compartments

Pressure relief into the switchhouse

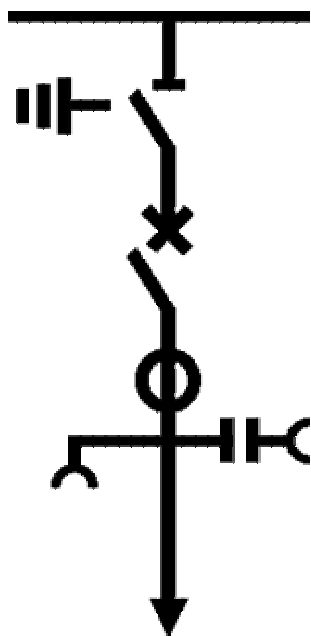


Relief for a busbar system

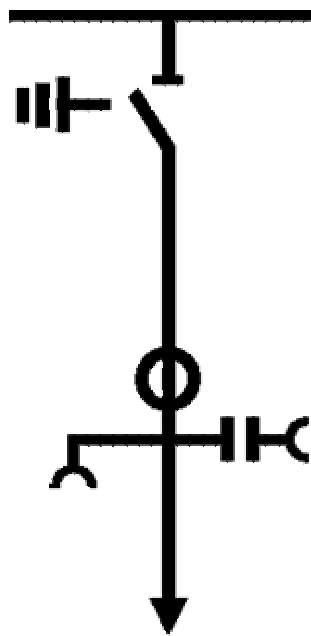


Gas-insulated switchgear type ZX2

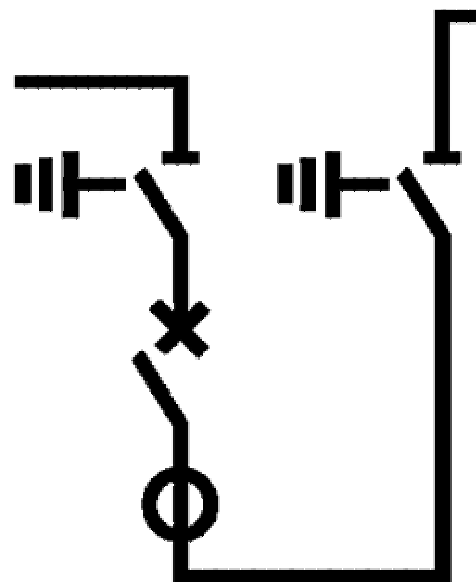
Single lines of switchgear variants (SBB)



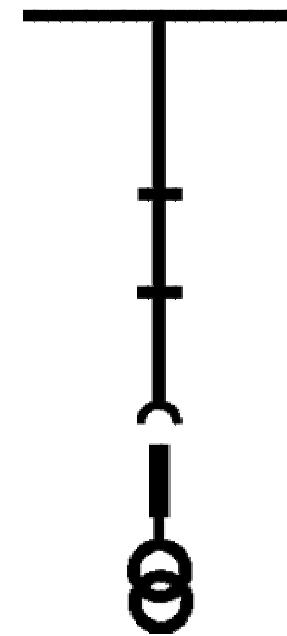
Feeder panel



Cable connection



Bus sectionalizer
in one panel

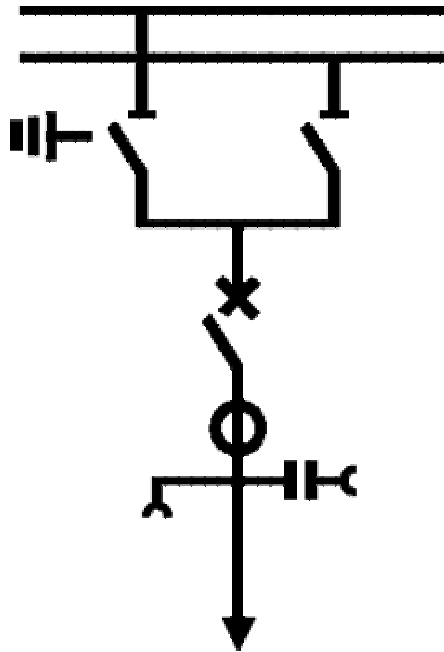


BB-metering

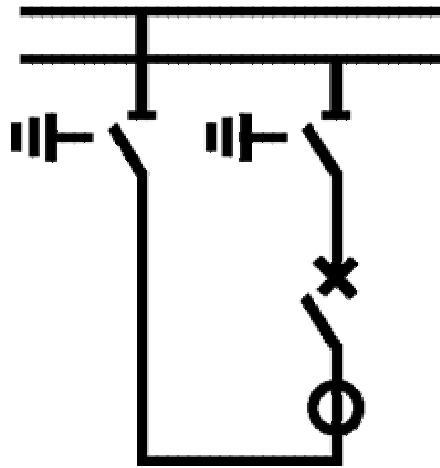


Gas-insulated switchgear type ZX2

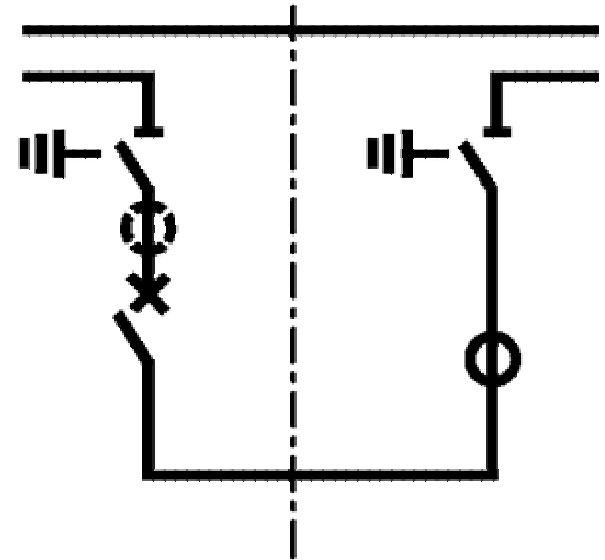
Single lines of switchgear variants (DBB)



Feeder panel



Bus coupler



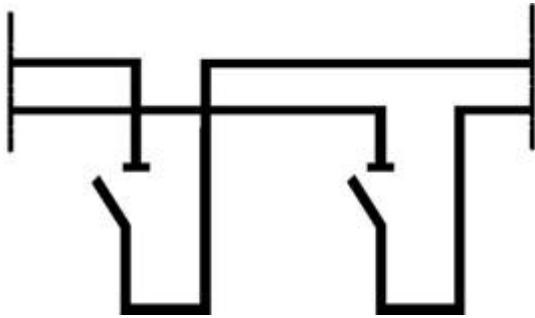
Bus sectionalizer

Sheet 1/2

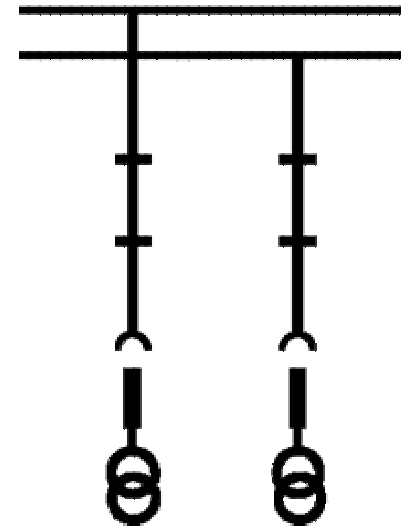


Gas-insulated switchgear type ZX2

Single lines of switchgear variants (DBB)



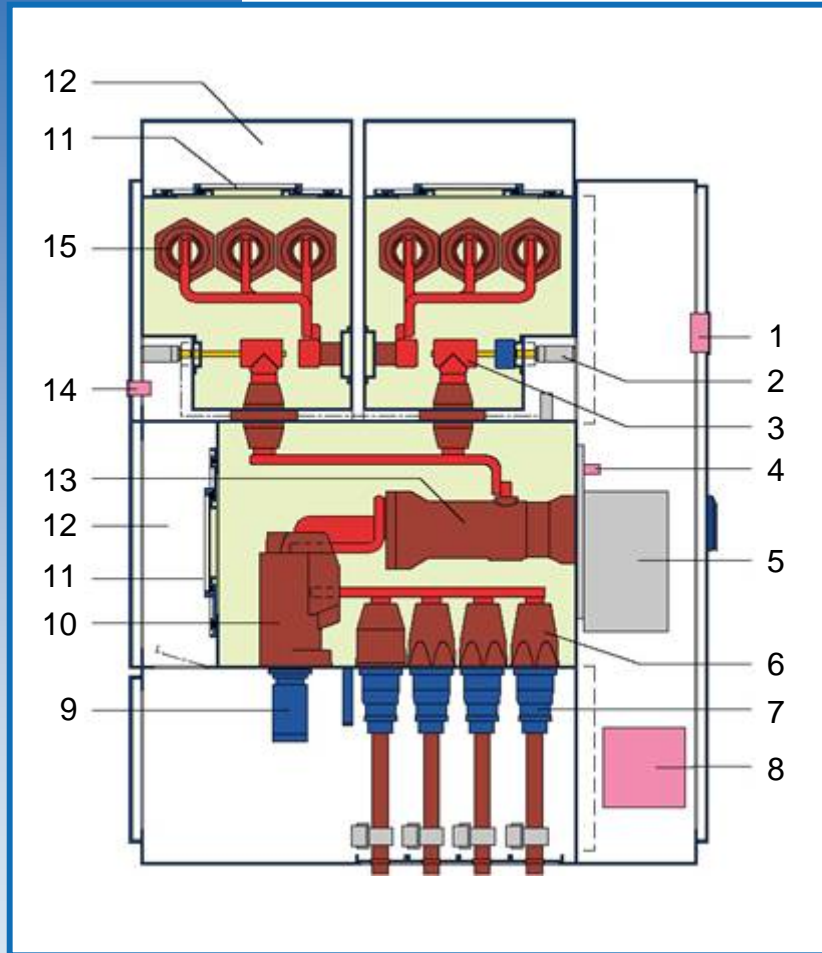
Bus section w/o CBs



BB-metering



Gas-insulated switchgear type ZX2



Double busbar panel for 2000 A

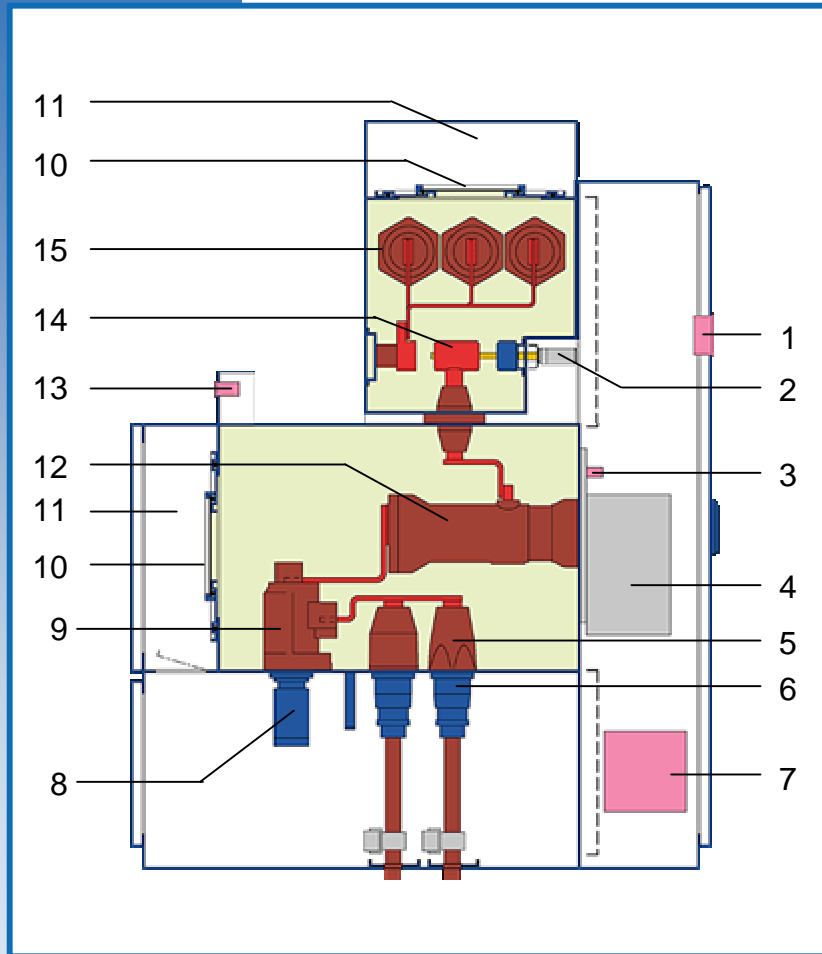
- 1 HMI of REF542 *plus*
- 2 Three position switch operating mechanism
- 3 Three position switch
- 4 Pressure sensor (temperature-compensated)
- 5 Circuit-breaker operating mechanism
- 6 Cable socket
- 7 Cable plug
- 8 Electronic unit of REF542 *plus*
- 9 Voltage sensor
- 10 Combined current sensor with socket
- 11 Pressure relief disc
- 12 Pressure relief duct
- 13 Circuit-breaker
- 14 Measuring sockets for capacitive voltage
- 15 Busbars

 SF₆



Gas-insulated switchgear type ZX2

Single busbar panel for 1250 A

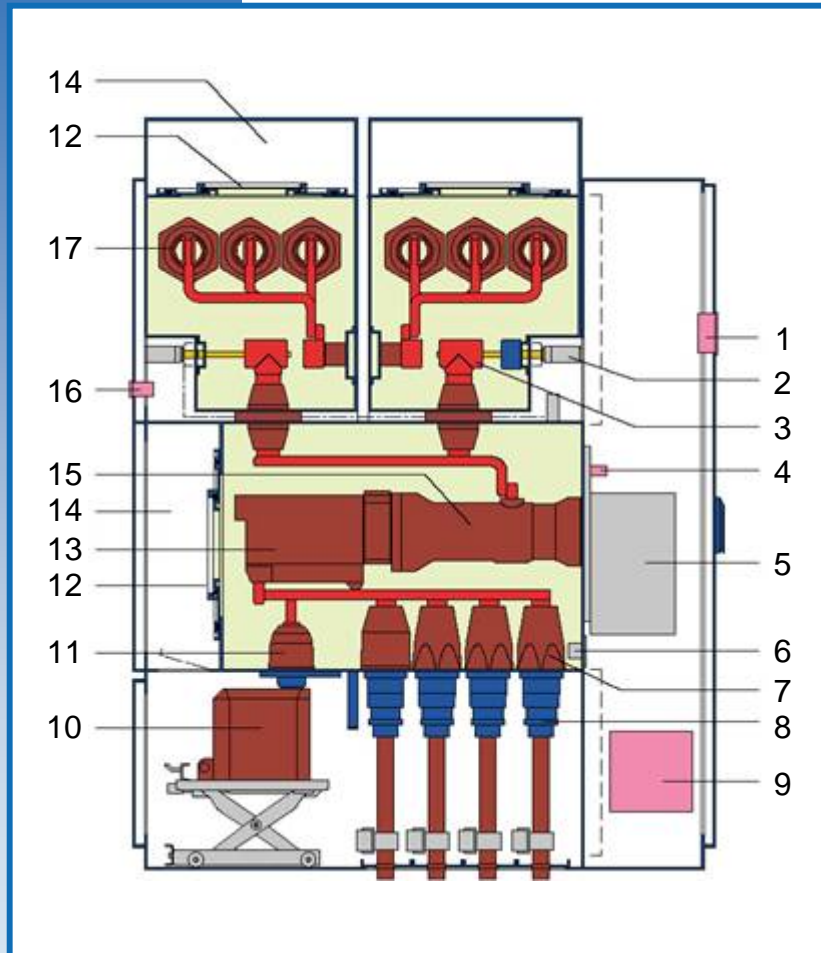


- 1 HMI of REF542 *plus*
- 2 Three position switch operating mechanism
- 3 Pressure sensor (temperature-compensated)
- 4 Circuit-breaker operating mechanism
- 5 Cable socket
- 6 Cable plug
- 7 Electronic unit of REF542 *plus*
- 8 Voltage sensor
- 9 Combined current sensor with socket
- 10 Pressure relief disc
- 11 Pressure relief duct
- 12 Circuit-breaker
- 13 Measuring sockets for capacitive voltage indicator system
- 14 Three position switch
- 15 Busbars

 SF₆

Gas-insulated switchgear type ZX2

Double busbar panel 2000 A

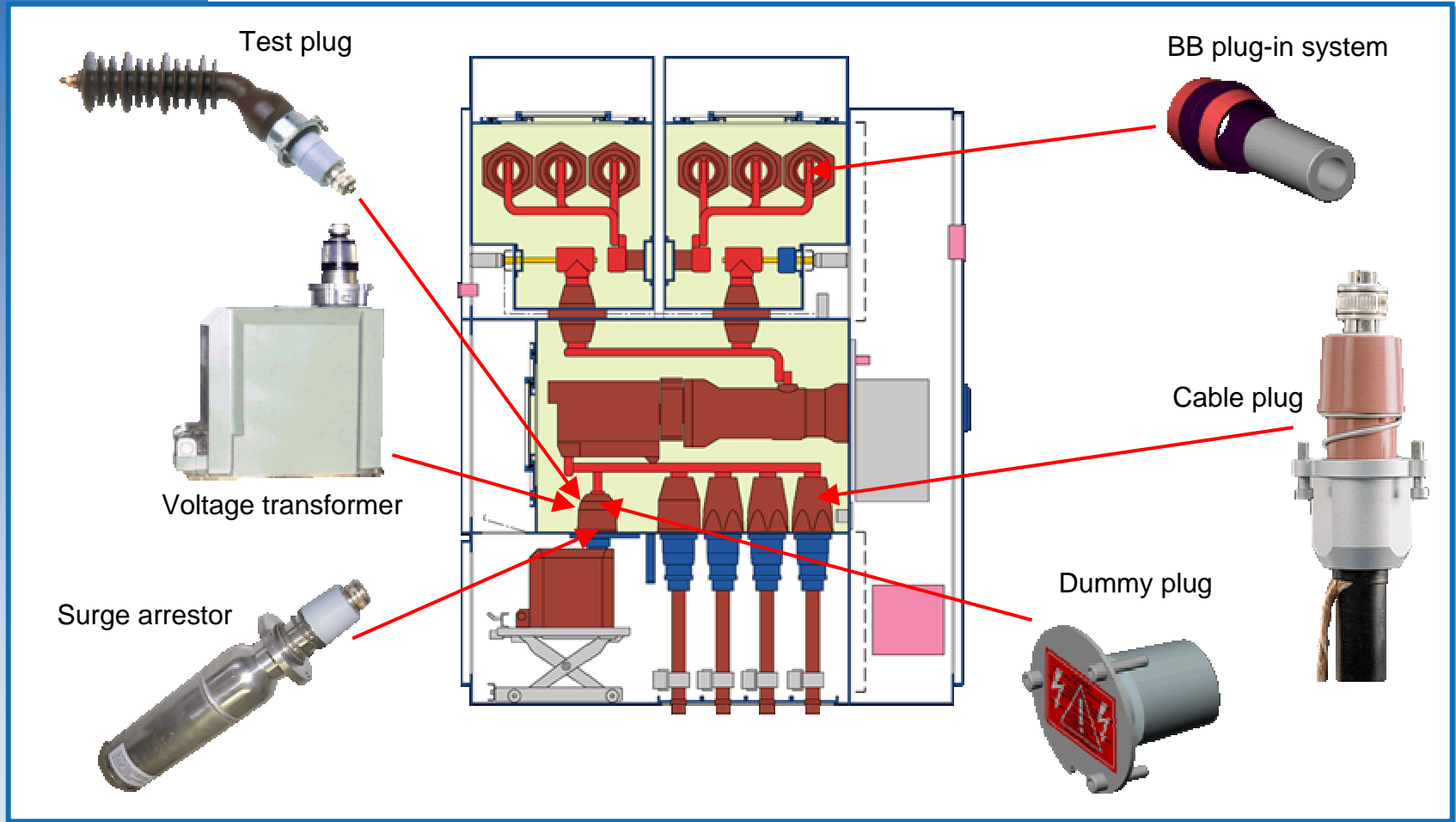


- 1 HMI of control unit
- 2 Three position switch operating mechanism
- 3 Three position switch
- 4 Pressure sensor (temperature-compensated)
- 5 Circuit-breaker operating mechanism
- 6 Secondary terminals of current transformer
- 7 Cable socket
- 8 Cable plug
- 9 Electronic of control unit
- 10 Voltage transformer
- 11 Multifunctional socket
- 12 Pressure relief disk
- 13 Current transformer
- 14 Pressure relief duct
- 15 Circuit-breaker
- 16 Measuring sockets for capacitive voltage indicator system
- 17 Busbars

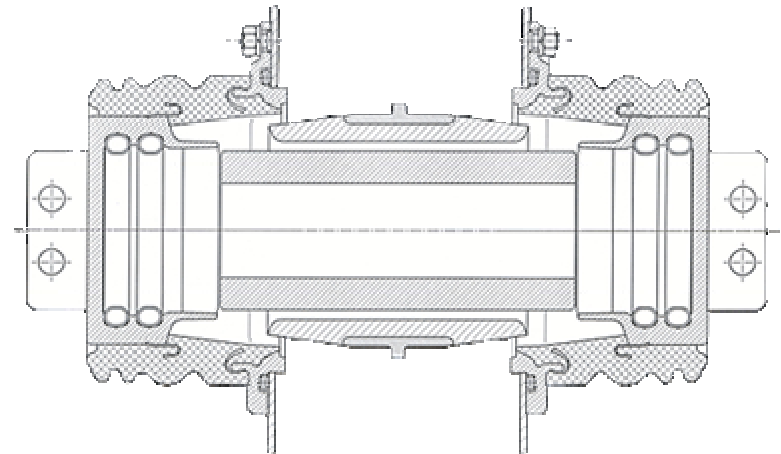
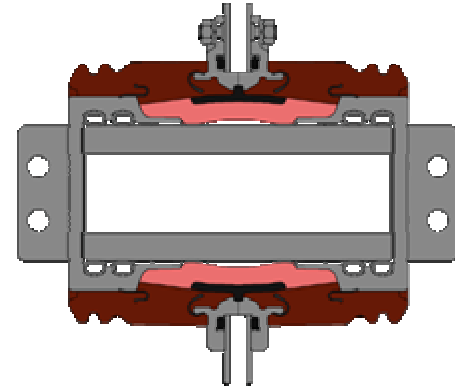
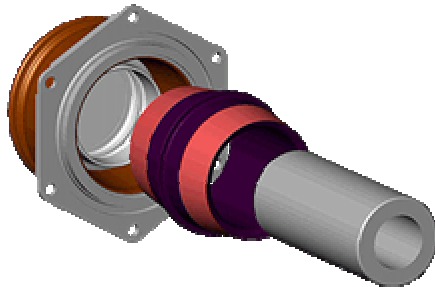
SF₆



Gas-insulated switchgear type ZX2



Gas-insulated switchgear type ZX2



ABB